



Bar Hop

Robin Pickens • Multiple Sizes

RPQP BH145 Retail \$12.00



Yardage Requirements

1 Quilt

10 Quilts

Lap in Cream with Rainbow Border
51 1/2" x 50"



48730PP



Blocks

1 PP 10 PPs



48730 11*



Blocks

1/2 yd 5 yds



48626 36



Background

1 yd 10 yds



48730 11*



Outer Border (match colors
at corners needs extra)
1 1/4 yds 12 1/2 yds

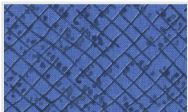


48734 11*



Backing

3 1/4 yds 32 1/2 yds



48737 24



Binding

1/2 yd 5 yds

The WOF rainbow for Wild Blossoms is used on this version and needs slightly more fabric to line up Colors (flipping down to keep color ramp)

Yardage Requirements

1 Quilt

10 Quilts

Lap in Navy with Bluebonnet Border
51 1/2" x 50"



48730PP



Blocks

1 PP 10 PPs



48730 11*



Blocks

1/2 yd 5 yds

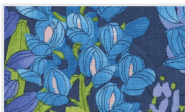


48626 94



Background

1 yd 10 yds



48732 25*



Outer Border (Blue Bonnets)

2/3 yd 6 2/3 yds



48734 23*



Backing

3 1/4 yds 32 1/2 yds



48737 24



Binding

1/2 yd 5 yds

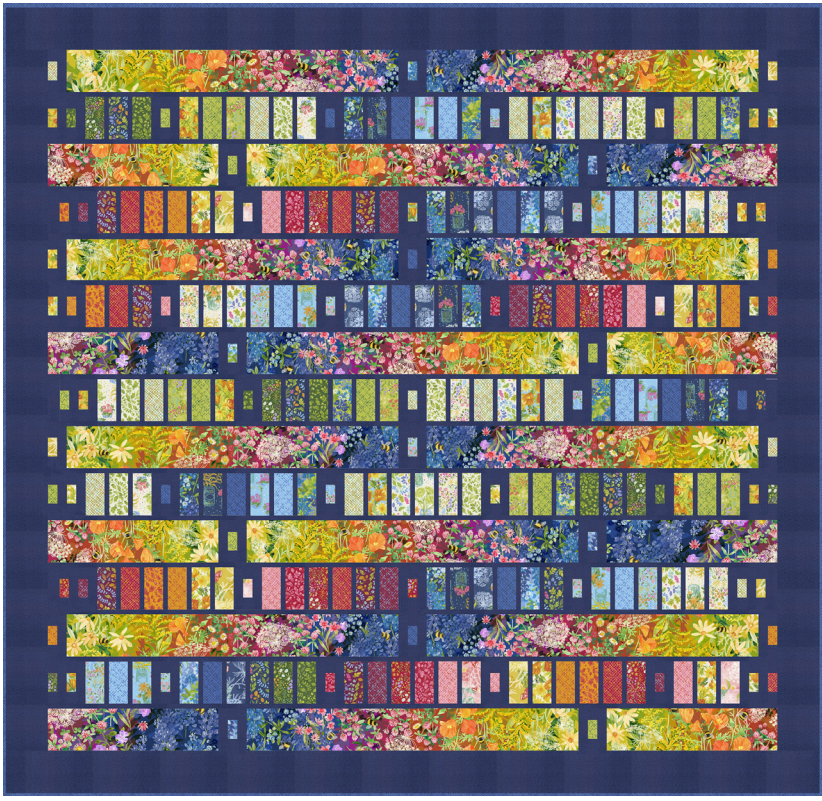
Instead of 1/2 Yard of Wild Blossoms WOF rainbow print, you can use 2 FQ of prints for the horizontal bands in quilt.



Bar Hop

Robin Pickens • Multiple Sizes

RPQP BH145 Retail \$12.00



Yardage Requirements

1 Quilt

10 Quilts

Lap in Cream with FQ vs WOF Rainbow Print
51 1/2" x 50"



48730PP



Blocks

1 PP

10 PPs



48734 11*



Blocks

FQ

2 1/2 yds



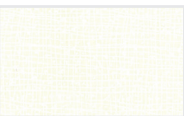
48733 12*



Blocks

FQ

2 1/2 yds



48626 36



Background

1 yd

10 yds



48733 12*



Outer Border (Queen Anne's
Lace Maize)

2/3 yd

6 2/3 yds



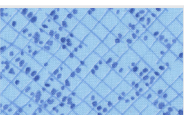
48735 11*



Backing

3 1/4 yds

32 1/2 yds



48737 23



Binding

1/2 yd

5 yds

Yardage Requirements

1 Quilt

10 Quilts

Queen in Blue with Rainbow print for horizontal bars
87" x 84"



48730LC



Blocks

1 LC

10 LCs



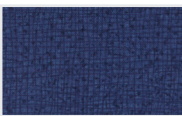
48730 11*



Blocks

2 1/3 yds

23 1/3 yds



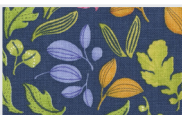
48626 94



Background

4 yds

40 yds



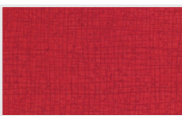
48736 25*



Backing

7 2/3 yds

76 2/3 yds



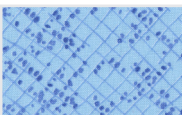
11174 119



OR Wideback for Backing

2 3/4 yds

27 1/2 yds



48737 23



Binding

3/4 yd

7 1/2 yds

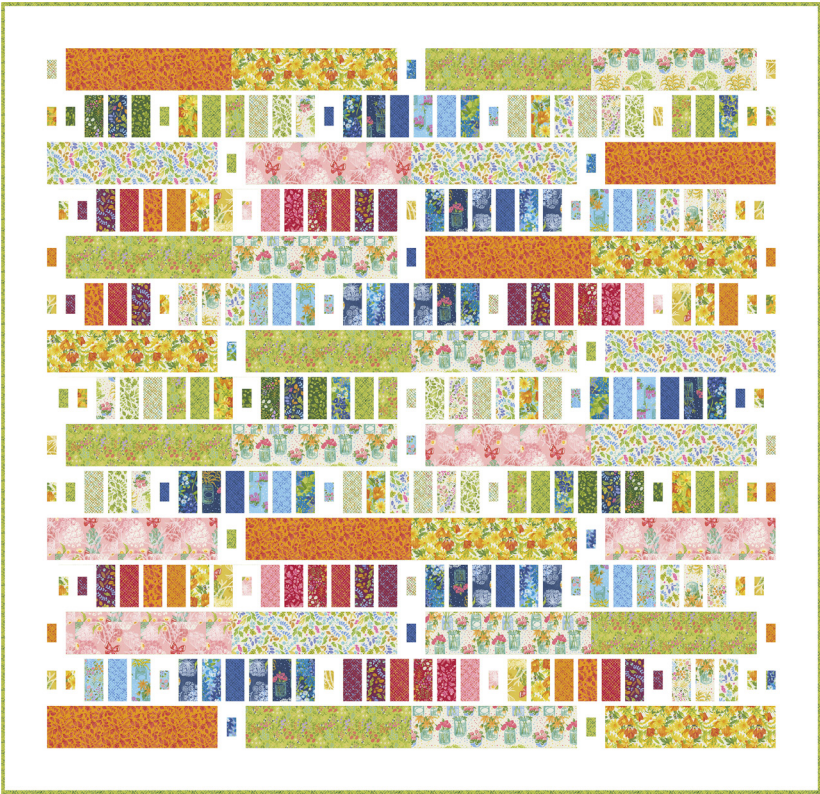
Instead of a Layer Cake, you can use 3 Charm
Packs or a Jelly Roll for the vertical bars.



Bar Hop

Robin Pickens • Multiple Sizes

RPQP BH145 Retail \$12.00



Yardage Requirements

1 Quilt

10 Quilts

Queen in Cream with 1/2 yd prints for horizontal bars
87" x 84"



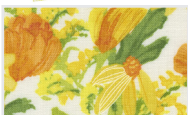
48730LC



Blocks

1 LC

10 LCs



48731 11*



Blocks

1/2 yd

5 yds



48733 21*



Blocks

1/2 yd

5 yds



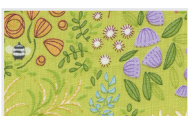
48734 11*



Blocks

1/2 yd

5 yds



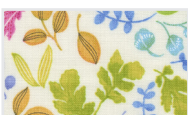
48735 13*



Blocks

1/2 yd

5 yds



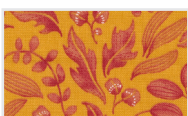
48736 11*



Blocks

1/2 yd

5 yds



48736 17



Blocks

1/2 yd

5 yds



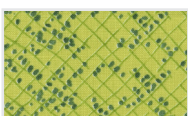
48626 36



Background

4 yds

40 yds



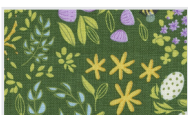
48737 13



Binding

3/4 yd

7 1/2 yds



48735 16



Backing

7 2/3 yds

76 2/3 yds

Yardage Requirements

1 Quilt

10 Quilts



11174 94



OR Wideback for Backing

2 3/4 yds

27 1/2 yds

Instead of a Layer Cake, you can use 3 Charm Packs for 2 smallest bar sizes.

Weaverly

Robin Pickens • 72 1/2" x 90 1/2 Twin

RPQP W146 Retail \$12.00



Yardage Requirements

1 Quilt

10 Quilts



48730LC



Blocks

1 LC

10 LCs



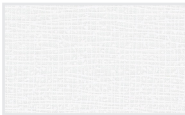
48626 158



Sashing

1 1/8 yds

11 1/4 yds



48626 150



Background

3 3/4 yds

37 1/2 yds



48736 25*



Backing

5 1/2 yds

55 yds



11174 158



OR Wideback for Backing

2 1/3 yds

23 1/3 yds



48737 24



Binding

5/8 yd

6 1/4 yds



Joyful Trio

Robin Pickens • 60" x 67 1/2"

RPQP JT147

Retail \$12.00

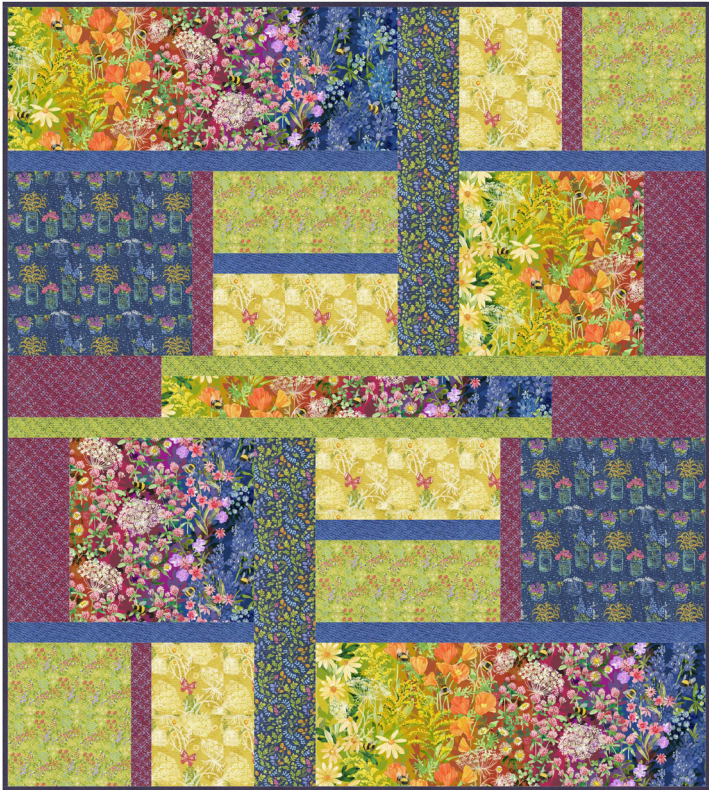


Chunky Cuts

Designs by Lavender Lime • 67 1/2" x 76 1/2"

DLL 183

Retail \$12.00



Yardage Requirements

1 Quilt

10 Quilts



48730 11*



Blocks

1/2 yd

5 yds



48732 25*



Blocks

FQ

2 1/2 yds



48733 12*



Blocks

FQ

2 1/2 yds



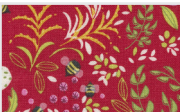
48734 23*



Blocks

FQ

2 1/2 yds



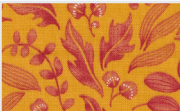
48735 19*



Blocks

FQ

2 1/2 yds



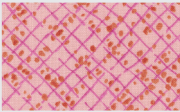
48736 17



Blocks

FQ

2 1/2 yds



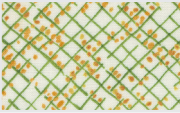
48737 21



Blocks

FQ

2 1/2 yds



48737 11*



Sashing

3/4 yd

7 1/2 yds



48626 36



Background

2 1/3 yds

23 1/3 yds



48736 11*



Backing

4 1/4 yds

42 1/2 yds



11174 36



OR Backing 108"

Thatched Cream

2 yds

20 yds



48737 11*



Binding

1/2 yd

5 yds

Yardage Requirements

1 Quilt

10 Quilts



48730 11*



Blocks

2 1/4 yds

22 1/2 yds



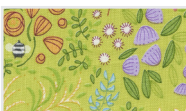
48734 25*



Blocks

5/8 yd

6 1/4 yds



48735 13*



Blocks

3/4 yd

7 1/2 yds



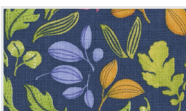
48733 12*



Blocks

3/4 yd

7 1/2 yds



48736 25*



Blocks

1/2 yd

5 yds



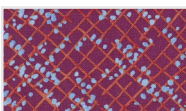
48737 24



Blocks

3/8 yd

3 3/4 yds



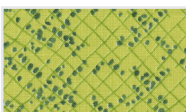
48737 22



Blocks

5/8 yd

6 1/4 yds



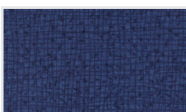
48737 13



Blocks

3/8 yd

3 3/4 yds



48626 94



Binding

3/4 yd

7 1/2 yds



48733 12*



Backing

5 yds

50 yds