

★
RUBY STAR
SOCIETY
★



HODGEPODGE 60" x 72"

MULT 2/ \$6.00

Modernly Morgan

MM 016



November



(HODGEPODGE, SHOWN TO THE LEFT)

10 100

		RS6039 15 binding	½	5
		backing	4½	42½
		RS6032 13 piecing	¼	2½
		RS6033 12 piecing	¼	2½
		RS6036 12 piecing	¼	2½
		RS6031 13 piecing	¼	2½
		RS6031 12 piecing	¼	2½
		RS6037 14 piecing	¼	2½
		RS6034 13 piecing	¼	2½
		RS6032 11 piecing	¼	2½
		RS6034 11 piecing	¼	2½
		RS6037 13 piecing	¼	2½
		RS6037 12 piecing	¼	2½
		RS6038 13 piecing	¼	2½
		RS6039 11 piecing	¼	2½
		RS6033 11 piecing	¼	2½
		RS6034 12 piecing	¼	2½
		RS6039 14 background	2	20

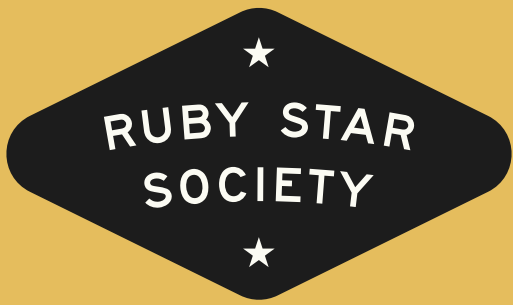
GREAT HEIGHTS 60" x 72" MULT 2/ \$6.50

Modernly Morgan MM 022  November



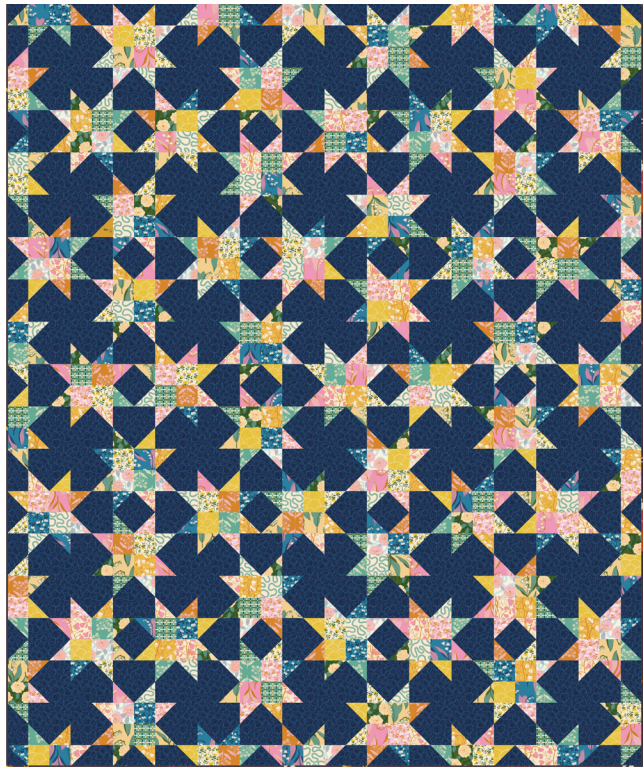
(GREAT HEIGHTS, SHOWN TO THE LEFT) 10 100

	 7 52106 75327 3	RS6038 14 binding	1/2	5
		backing	4 1/2	45
	 7 52106 75312 9	RS6034 11 piecing	1/4	2 1/2
	 7 52106 75319 8	RS6036 12 piecing	1/4	2 1/2
	 7 52106 75325 9	RS6038 12 piecing	1/4	2 1/2
	 7 52106 75309 9	RS6033 11 piecing	1/4	2 1/2
	 7 52106 75321 1	RS6037 12 piecing	1/4	2 1/2
	 7 52106 75306 8	RS6032 11 piecing	1/4	2 1/2
	 7 52106 75323 5	RS6037 14 piecing	1/4	2 1/2
	 7 52106 75313 6	RS6034 12 piecing	1/4	2 1/2
	 7 52106 75305 1	RS6031 13 piecing	1/4	2 1/2
	 7 52106 75322 8	RS6037 13 piecing	1/4	2 1/2
	 7 52106 75310 5	RS6033 12 piecing	1/4	2 1/2
	 7 52106 75308 2	RS6032 13 piecing	1/4	2 1/2
	 7 52106 75307 5	RS6032 12 piecing	1/4	2 1/2
	 7 52106 75304 4	RS6031 12 piecing	1/4	2 1/2
	 7 52106 75314 3	RS6034 13 piecing	1/4	2 1/2
	 7 52106 75324 2	RS6038 11 background	2 1/3	23 1/3



NIGHT VISION 60" x 72" MULT 2/ \$6.50

Modernly Morgan MM 019  7 68253 92052 9 November



CIRCLE TIME 55" x 74" MULT 2/ \$6.00

Everyday Stitches ES 508  7 52423 74968 3 November



(CIRCLE TIME, SHOWN ABOVE) 1Q 10Q

	 7 52106 75314 3	RS6034 13 binding	5/8	6 1/4
		backing	4 1/2	45
	 7 52106 75305 1	RS6031 13 piecing	7/8	8 3/4
	 7 52106 75319 8	RS6036 12 piecing	7/8	8 3/4
	 7 52106 75298 6	RS6031 LC piecing	1	10
	 7 52106 75326 6	RS6038 13 background	2 1/2	25

(NIGHT VISION, SHOWN TO THE LEFT) 1Q 10Q

	 7 52106 75330 3	RS6039 15 binding	1/2	5
		backing	4 1/2	45
	 7 52106 75323 5	RS6037 14 piecing	1/4	2 1/2
	 7 52106 75313 6	RS6034 12 piecing	1/4	2 1/2
	 7 52106 75325 9	RS6038 12 piecing	1/4	2 1/2
	 7 52106 75310 5	RS6033 12 piecing	1/4	2 1/2
	 7 52106 75308 2	RS6032 13 piecing	1/4	2 1/2
	 7 52106 75309 9	RS6033 11 piecing	1/4	2 1/2
	 7 52106 75312 9	RS6034 11 piecing	1/4	2 1/2
	 7 52106 75304 4	RS6031 12 piecing	1/4	2 1/2
	 7 52106 75307 5	RS6032 12 piecing	1/4	2 1/2
	 7 52106 75303 7	RS6031 11 piecing	1/4	2 1/2
	 7 52106 75319 8	RS6036 12 piecing	1/4	2 1/2
	 7 52106 75317 4	RS6035 13 piecing	1/4	2 1/2
	 7 52106 75322 8	RS6037 13 piecing	1/4	2 1/2
	 7 52106 75321 1	RS6037 12 piecing	1/4	2 1/2
	 7 52106 75306 8	RS6032 11 piecing	1/4	2 1/2
	 7 52106 75330 3	RS6039 15 background	3 1/3	33 1/3

FRESH AS A DAISY 60" x 64"

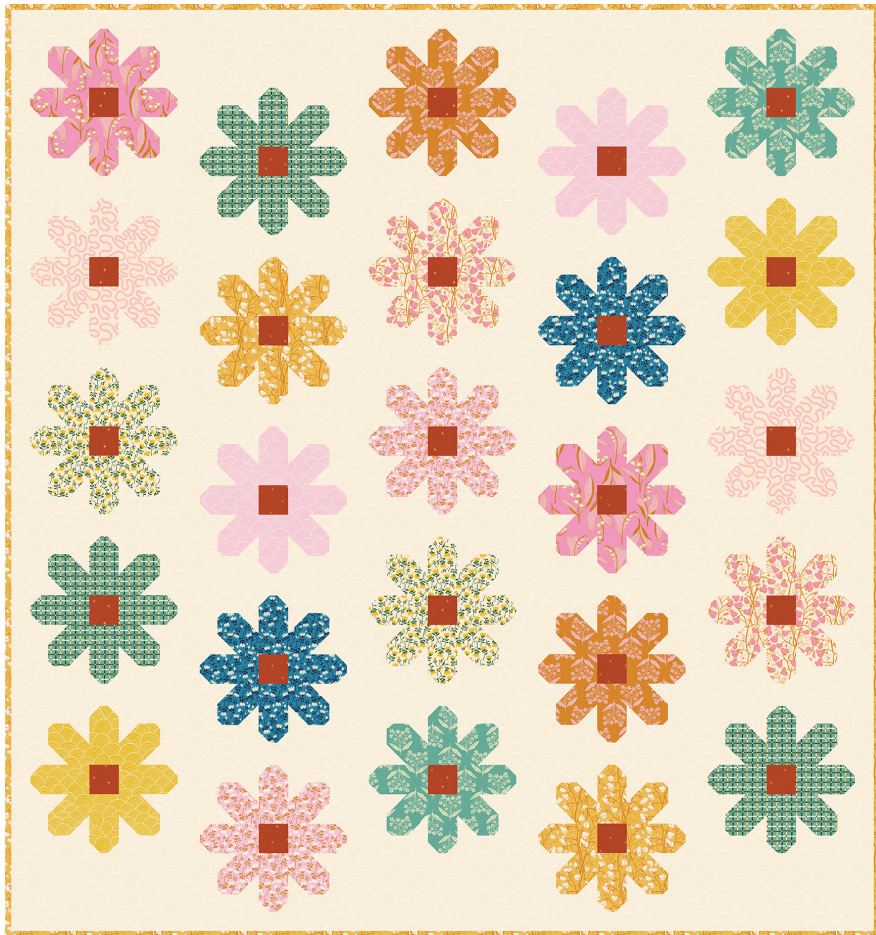
MULT 2/ \$6.00

Pen + Paper Patterns

PPP 18



November



(FRESH AS A DAISY, SHOWN TO THE LEFT)

10 100

	7 52106 75310 5	RS6033 12 binding	1/2	5
		backing	4	40
	7 52106 56245 5	RS0005 35M piecing	1/4	2 1/2
	7 52106 75306 8	RS6032 11 piecing	1/4	2 1/2
	7 52106 75315 0	RS6035 11 piecing	1/4	2 1/2
	7 52106 75321 1	RS6037 12 piecing	1/4	2 1/2
	7 52106 75319 8	RS6036 12 piecing	1/4	2 1/2
	7 52106 75325 9	RS6038 12 piecing	1/4	2 1/2
	7 52106 75310 5	RS6033 12 piecing	1/4	2 1/2
	7 52106 75326 6	RS6038 13 piecing	1/4	2 1/2
	7 52106 75323 5	RS6037 14 piecing	1/4	2 1/2
	7 52106 75322 8	RS6037 13 piecing	1/4	2 1/2
	7 52106 75312 9	RS6034 11 piecing	1/4	2 1/2
	7 52106 75311 2	RS6033 14 piecing	1/4	2 1/2
	7 52106 75313 6	RS6034 12 piecing	1/4	2 1/2
	7 52106 75309 9	RS6033 11 piecing	1/4	2 1/2
	7 52106 75324 2	RS6038 11 background	4	40

★
RUBY STAR
SOCIETY
★



BRILLIANT 54" x 67"

MULT 2/ \$8.00

Tara Lee Quiltery

TLQ 1007



November



(BRILLIANT, SHOWN TO THE LEFT)

10 100

	binding	1/2	
	backing	3 1/2	
	RS6037 14 piecing	1/4	
	RS6031 13 piecing	1/4	
	RS6039 11 piecing	1/4	
	RS6032 12 piecing	1/4	
	RS6037 13 piecing	1/4	
	RS6034 12 piecing	1/4	
	RS6033 14 piecing	1/4	
	RS6038 13 piecing	1/4	
	RS6031 12 piecing	1/4	
	RS6032 13 piecing	1/4	
	RS6039 14 piecing	1/4	
	RS6032 11 piecing	1/4	
	RS6036 14 piecing	1/4	
	RS6033 11 piecing	1/4	
	RS6036 12 piecing	1/4	
	RS6034 11 piecing	1/4	
	RS6034 13 background	2 1/4	

★
RUBY STAR
SOCIETY
★



BOOK NOOK 65" x 71"

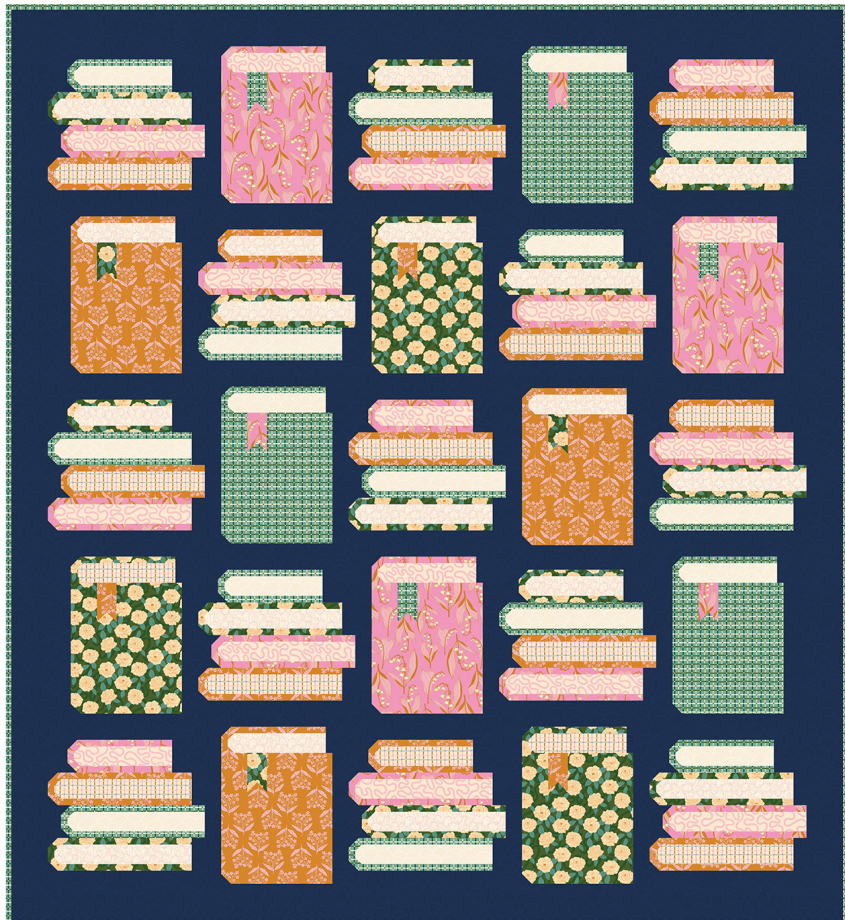
MULT 2/ \$6.00

Pen + Paper Patterns

PPP 36



November



DUCK AND WEAVE 56" x 73"

MULT 2/ \$6.50

Sew Mariana

SMA 114



November



(BOOK NOOK, SHOWN ABOVE)

10 100

		RS6036 12 binding	5/8	6 1/4
		backing	4	40
		RS6032 11 piecing	3/4	7 1/2
		RS6034 11 piecing	3/4	7 1/2
		RS6036 12 piecing	3/4	7 1/2
		RS6031 12 piecing	3/4	7 1/2
		RS6038 11 piecing	3/8	3 3/4
		RS6039 14 piecing	3/8	3 3/4
		RS6035 11 piecing	3/8	3 3/4
		RS6036 11 piecing	3/8	3 3/4
		RS6038 14 background	2 1/3	23 1/3

(DUCK AND WEAVE, SHOWN ABOVE)

10 100

		RS6034 13 binding	7/8	8 3/4
		backing	3 3/4	37 1/2
		RS6036 14 piecing	7/8	8 3/4
		RS6031 12 piecing	1	10
		RS6037 14 piecing	1 3/8	13 3/4
		RS6033 12 piecing	7/8	8 3/4
		RS6032 11 piecing	7/8	8 3/4
		RS6038 11 piecing	7/8	8 3/4