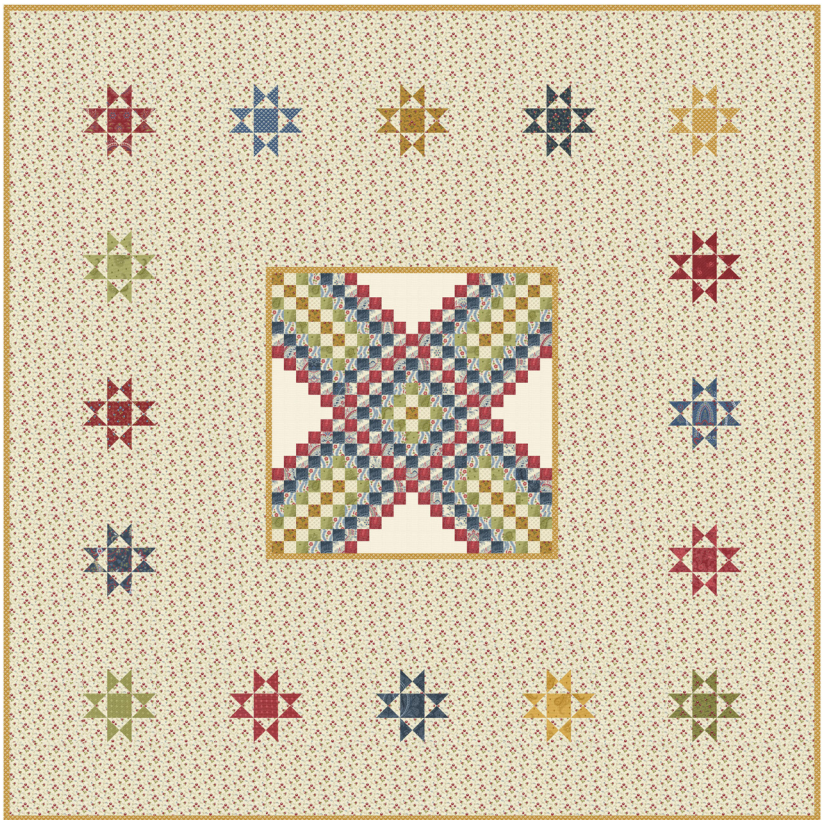




Ferry Crossing

Minick & Simpson • 66" x 66"

MS2207      Retail \$10.00      8 50031 48107 7



Yardage Requirements	1 Quilt	10 Quilts
----------------------	---------	-----------

BOTH COLORWAYS

	<b>14957 14</b>	binding, inner border
	<b>9900 60</b>	quilt center bkgd
	<b>14953 14*</b>	trip around the world center
	<b>14957 11</b>	trip around the world center
	<b>14952 23</b>	trip around the world center
	<b>14955 21*</b>	trip around the world center
	<b>14950 16*</b>	trip around the world center
	<b>14950 11*</b>	trip around the world center
	<b>14951 12</b>	trip around the world center

Yardage Requirements	1 Quilt	10 Quilts
----------------------	---------	-----------

LIGHT COLORWAY

	<b>14950 12*</b>	star
	<b>14957 15</b>	star
	<b>14952 23</b>	star
	<b>14953 12*</b>	star
	<b>14951 16*</b>	star
	<b>14953 14*</b>	star
	<b>14953 16*</b>	star
	<b>14957 14</b>	star
	<b>14954 22*</b>	star
	<b>14950 15*</b>	star
	<b>14951 12</b>	star
	<b>14953 13*</b>	star
	<b>14956 13*</b>	star
	<b>14956 12*</b>	star
	<b>14950 16*</b>	star
	<b>14952 24</b>	star
	<b>14953 11*</b>	background
	<b>14950 12*</b>	backing

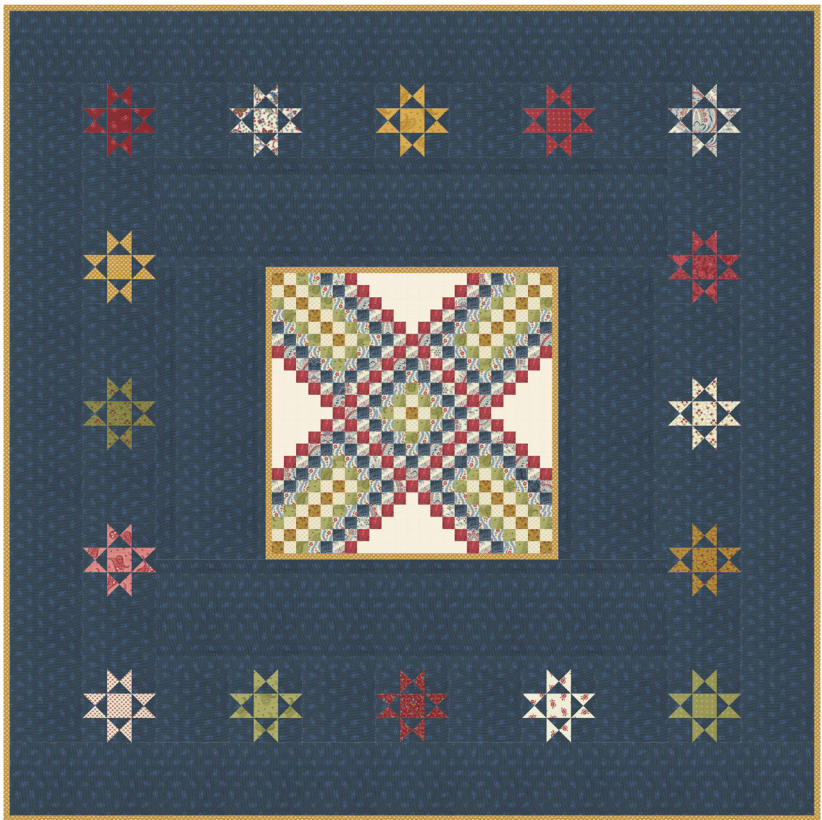




Ferry Crossing

Minick & Simpson • 66" x 66"

MS2207      Retail \$10.00      8 50031 48107 7



Yardage Requirements	1 Quilt	10 Quilts
----------------------	---------	-----------

DARK COLORWAY

	<b>14954 22*</b>	star	
		<b>1 F8</b>	1 1/4 yds
	<b>14957 14</b>	star	
		<b>1 F8</b>	1 1/4 yds
	<b>14953 13*</b>	star	
		<b>1 F8</b>	1 1/4 yds
	<b>14952 21*</b>	star	
		<b>1 F8</b>	1 1/4 yds
	<b>14957 21</b>	star	
		<b>1 F8</b>	1 1/4 yds
	<b>14952 23</b>	star	
		<b>1 F8</b>	1 1/4 yds
	<b>14953 12*</b>	star	
		<b>1 F8</b>	1 1/4 yds
	<b>14954 21</b>	star	
		<b>1 F8</b>	1 1/4 yds
	<b>14956 13*</b>	star	
		<b>1 F8</b>	1 1/4 yds

Yardage Requirements	1 Quilt	10 Quilts
	<b>14953 14*</b>	star
		<b>1 F8</b> 1 1/4 yds
	<b>14953 11*</b>	star
		<b>1 F8</b> 1 1/4 yds
	<b>14951 12</b>	star
		<b>1 F8</b> 1 1/4 yds
	<b>14950 11*</b>	star
		<b>1 F8</b> 1 1/4 yds
	<b>14956 12*</b>	star
		<b>1 F8</b> 1 1/4 yds
	<b>14951 11*</b>	star
		<b>1 F8</b> 1 1/4 yds
	<b>14952 24</b>	star
		<b>1 F8</b> 1 1/4 yds
	<b>14954 26</b>	background
		<b>3 3/4 yds</b> 37 1/2 yds
	<b>14951 11*</b>	backing
		<b>4 1/4 yds</b> 42 1/2 yds

Both the light and dark colorway quilts feature 16 different skus for stars. However, customers can make up to (4) stars per each F8. Customers need a minimun of (4) F8s and a maximum of (16).





Christmas Past

Minick & Simpson • 58" x 48"

MS2206

Retail \$15.00



Yardage Requirements

1 Quilt

10 Quilts



14957 11



cream star circles, center  
& border bkgd

3 yds 30 yds



14953 13\*



green star block bkgd

3/4 yd 7 1/2 yds



14953 14\*



gold star applique

1 FQ 2 1/2 yds



14954 11\*



cream star &  
peppermint circles

3/4 yd 7 1/2 yds



14952 24



gold star applique,  
lemoyne stars

3/8 yd 3 3/4 yds



14953 11\*



cream star circles

3/8 yd 3 3/4 yds



14957 14



gold star applique

1 FQ 2 1/2 yds



14952 23



green peppermint block  
bkgd, HST units

1 yd 10 yds



14954 22\*



red flag stripes, red pepper-  
mints, border, binding

1 1/4 yds 12 1/2 yds

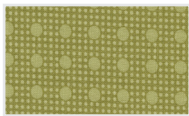


14955 11



cream peppermint circles

3/8 yd 3 3/4 yds



14956 13\*



green peppermint block bkgd

3/4 yd 7 1/2 yds

Yardage Requirements

1 Quilt

10 Quilts



14953 12\*



red peppermints, border

1 yd 10 yds

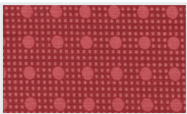


14950 11\*



cream peppermint circles

3/8 yd 3 3/4 yds



14956 12\*



red peppermints, border, HST  
units, lemoyne stars

1 yd 10 yds



14957 21



cream peppermint circles

3/8 yd 3 3/4 yds



14952 21\*



red flag stripes, border

5/8 yd 6 1/4 yds



14953 11\*



backing

3 1/4 yds 32 1/2 yds





Freesia

It's Sew Emma • 62 1/2" x 76 1/2"

ISE 267

Retail \$8.98



Yardage Requirements		1 Quilt	10 Quilts
	<b>14957 11</b> 	Bkgd and Borders	
		<b>2 1/3 yds</b>	23 1/3 yds
	<b>14954 11*</b> 	Background	
		<b>1 5/8 yds</b>	16 1/4 yds
	<b>14950 15*</b> 	Blocks	
		<b>FQ</b>	2 1/2 yds
	<b>14950 16*</b> 	Blocks	
		<b>FQ</b>	2 1/2 yds
	<b>14951 12</b> 	Blocks	
		<b>FQ</b>	2 1/2 yds
	<b>14951 16*</b> 	Blocks	
		<b>FQ</b>	2 1/2 yds
	<b>14952 21*</b> 	Blocks	
		<b>FQ</b>	2 1/2 yds
	<b>14952 31*</b> 	Blocks	
		<b>FQ</b>	2 1/2 yds
	<b>14953 12*</b> 	Blocks	
		<b>FQ</b>	2 1/2 yds

Yardage Requirements		1 Quilt	10 Quilts
	<b>14953 16*</b> 	Blocks	
		<b>FQ</b>	2 1/2 yds
	<b>14954 22*</b> 	Blocks	
		<b>FQ</b>	2 1/2 yds
	<b>14956 12*</b> 	Blocks	
		<b>FQ</b>	2 1/2 yds
	<b>14957 14</b> 	Blocks	
		<b>3/4 yd</b>	7 1/2 yds
	<b>14952 24</b> 	Blocks	
		<b>3/4 yd</b>	7 1/2 yds
	<b>14952 23</b> 	Blocks	
		<b>2/3 yd</b>	6 2/3 yds
	<b>14956 13*</b> 	Blocks	
		<b>2/3 yd</b>	6 2/3 yds
	<b>14956 12*</b> 	Binding	
		<b>3/4 yd</b>	7 1/2 yds
	<b>14951 11*</b> 	Backing	
		<b>4 7/8 yds</b>	48 3/4 yds