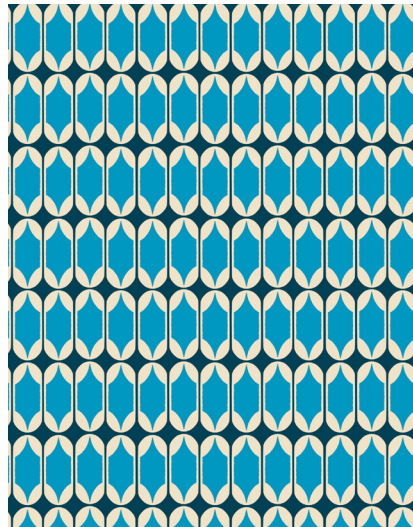
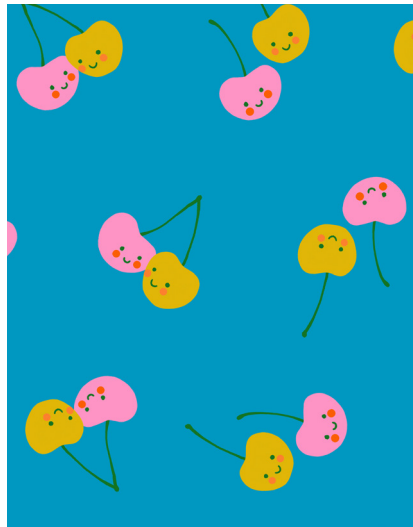
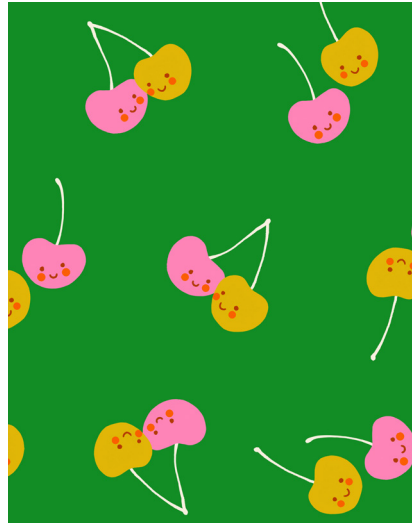
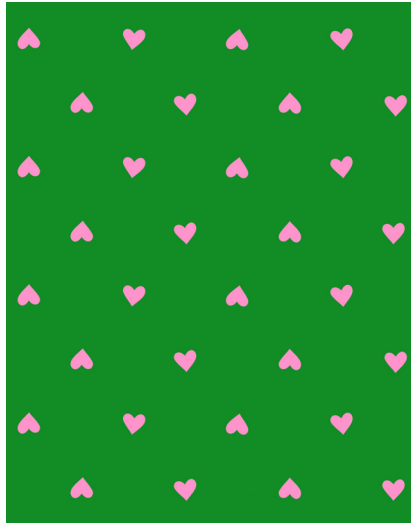
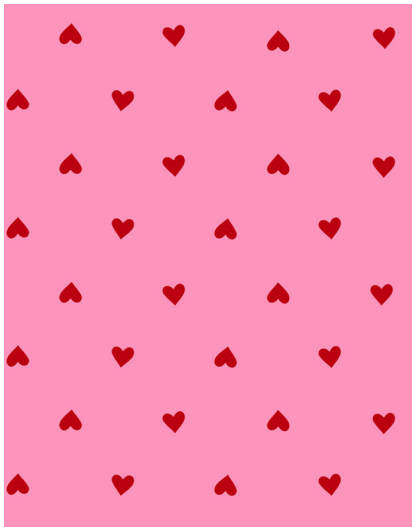
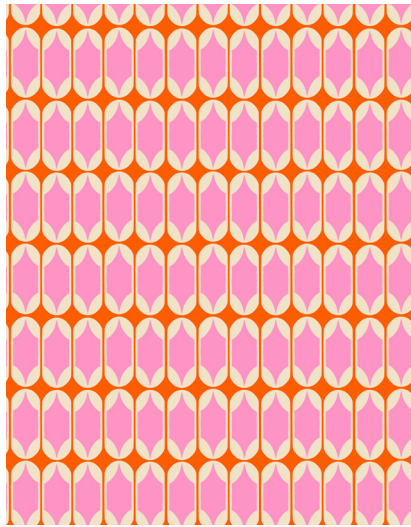
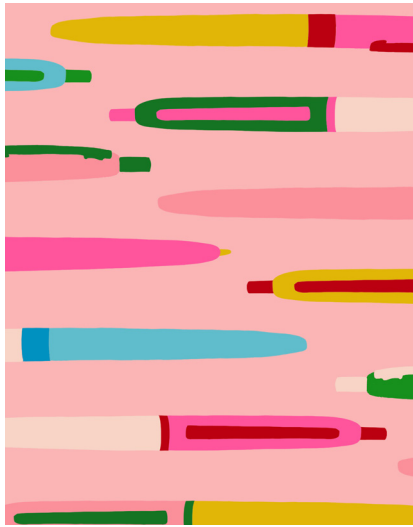




RUBY STAR SELECTS
ASST 0109

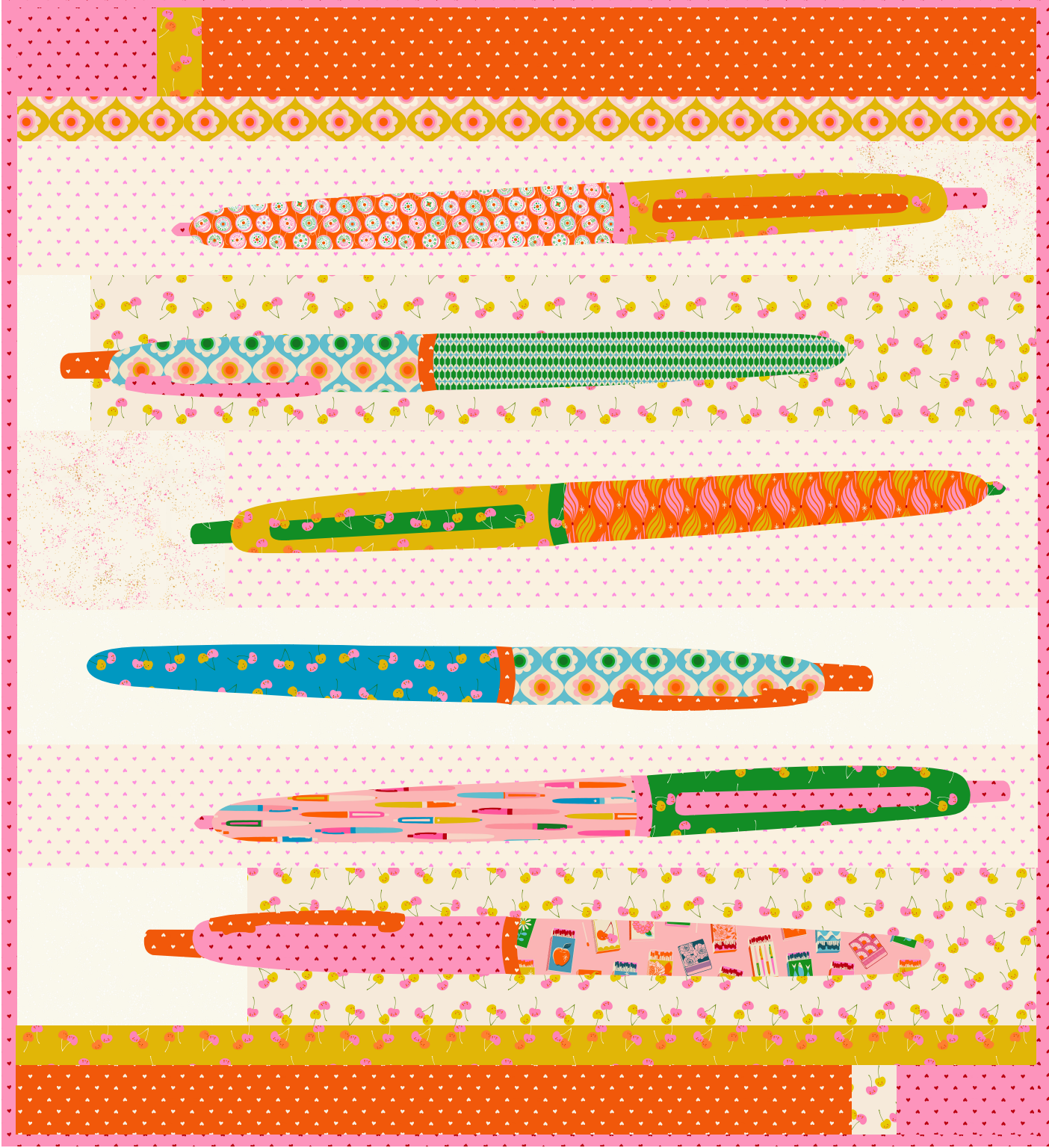


10 yards each of 20 skus
images at 50%





★ RUBY STAR SOCIETY ★ RUBY STAR SOCIETY ★ RUBY STAR SOCIETY ★ RUBY STAR SOCIETY ★ RUBY STAR SOCIETY ★ RUBY STAR SOCIETY ★ RUBY STAR SOCIETY ★ RUBY STAR SOCIETY ★ RUBY STAR SOCIETY ★ RUBY STAR SOCIETY ★



TRINKET QUILT by Ruby Star Society

FREE PATTERN!

58 ½" x 65"

will be uploaded to modafabrics.com when the fabric ships

TRINKETRY QUILT KIT

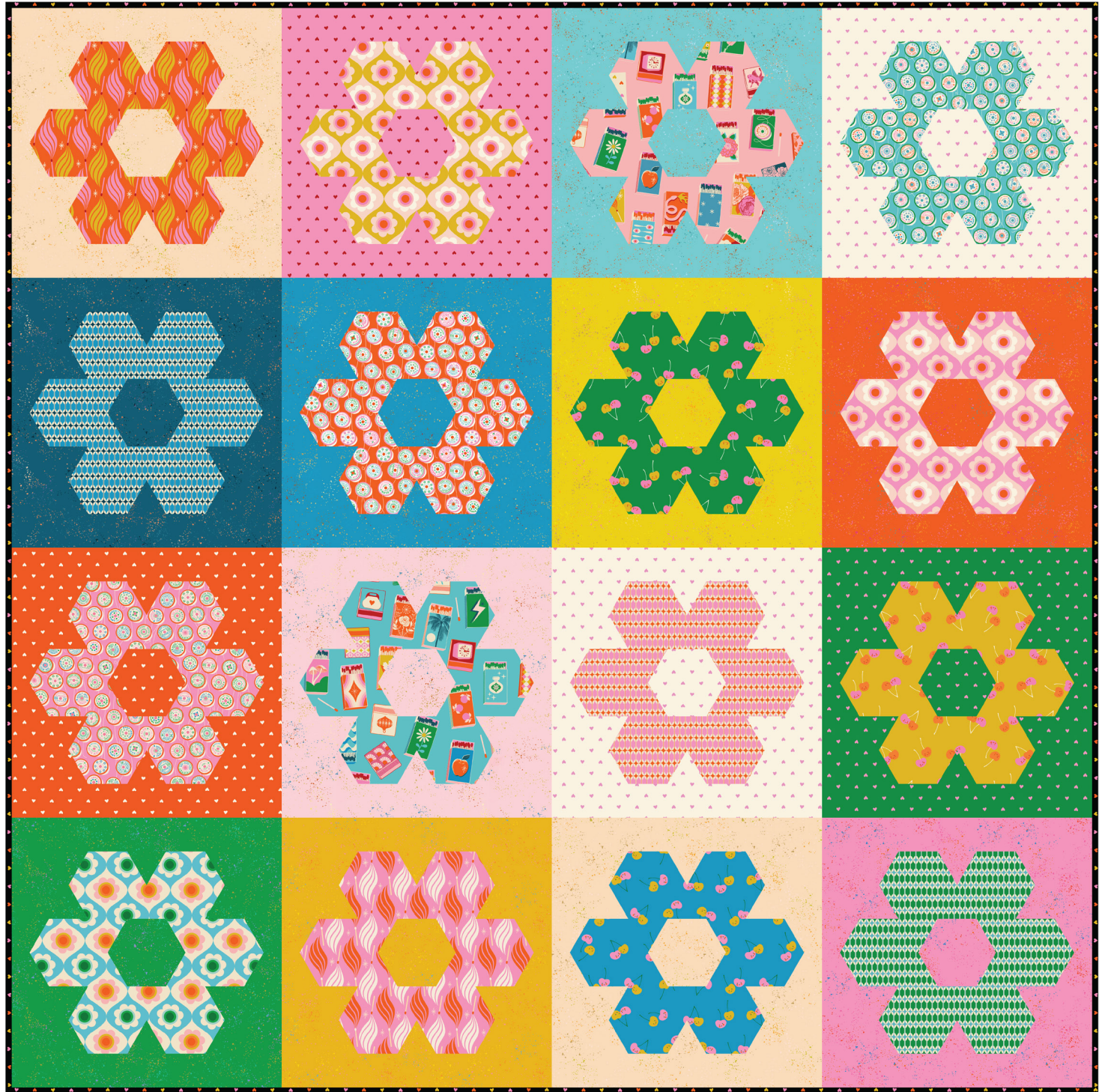


retail: \$ 129.99

yardage requirements

	RS0091 27  7 52106 86815 1	BLOCKS + BINDING 1 yd	10 yds
	RS0091 28  7 52106 86816 8	BLOCKS 1 yd	10 yds
	RS0091 22  7 52106 86814 4	BLOCKS 1 ¼ yds	12 ½ yds
	RS0112 11  7 52106 86829 8	BLOCKS 7⁄8 yds	8¾ yds
	RS0112 12  7 52106 86830 4	BLOCKS ¾ yds	3¾ yds
	RS0112 14  7 52106 86831 1	BLOCKS ¼ yds	2 ½ yds
	RS0112 15  7 52106 86832 8	BLOCKS ¼ yds	2 ½ yds
	RS0114 14  7 52106 86836 6	BLOCKS ¼ yds	2 ½ yds
	RS0114 18  7 52106 86838 0	BLOCKS ½ yds	5 yds
	RS0111 13  7 52106 86826 7	BLOCKS ¼ yds	2 ½ yds
	RS0115 17  7 52106 86841 0	BLOCKS ¼ yds	2 ½ yds
	RS0113 16  7 52106 86834 2	BLOCKS ¼ yds	2 ½ yds

	RS0110 18  7 52106 86824 3	BLOCKS ¼ yds	2 ½ yds
	RS0109 13  7 52106 86820 5	BLOCKS ¼ yds	2 ½ yds
	RS5027 136  7 52106 79032 2	BLOCKS ¾ yds	7 ½ yds
	RS5027 37M  7 52106 50297 0	BLOCKS ¾ yds	3¾ yds
	RS0112 12  7 52106 86830 4	BACKING 4 yds	40 yds



POP GARDEN

by Sew Mariana

SMA 126

64" x 64"

RETAIL PRICE:
\$14.00



yardage requirements

1 QUILT10 QUILTS

RS0109 FQ



BLOCKS

1 fq bundle10 fq bundles

USES 20 OUT OF 28 FAT QUARTERS



RS5027 72M



BLOCKS

1 fq10 fqs



RS5027 50M



BLOCKS

1 fq10 fqs



RS5027 111M



BLOCKS

1 fq10 fqs



RS5027 112



BLOCKS

1 fq10 fqs



RS5027 120



BLOCKS

1 fq10 fqs

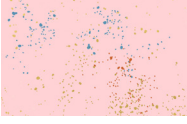


RS5027 123



BLOCKS

1 fq10 fqs

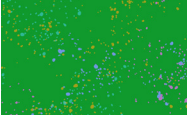


RS5027 37M



BLOCKS

1 fq10 fqs



RS5027 114



BLOCKS

1 fq10 fqs



RS5027 53M



BLOCKS

1 fq10 fqs



RS5027 136



BLOCKS

1 fq10 fqs



RS0091 22



BLOCKS

1 fq10 fqs



RS0091 36



BINDING

5⁄8 yds

6¼ yds



RS0109 11



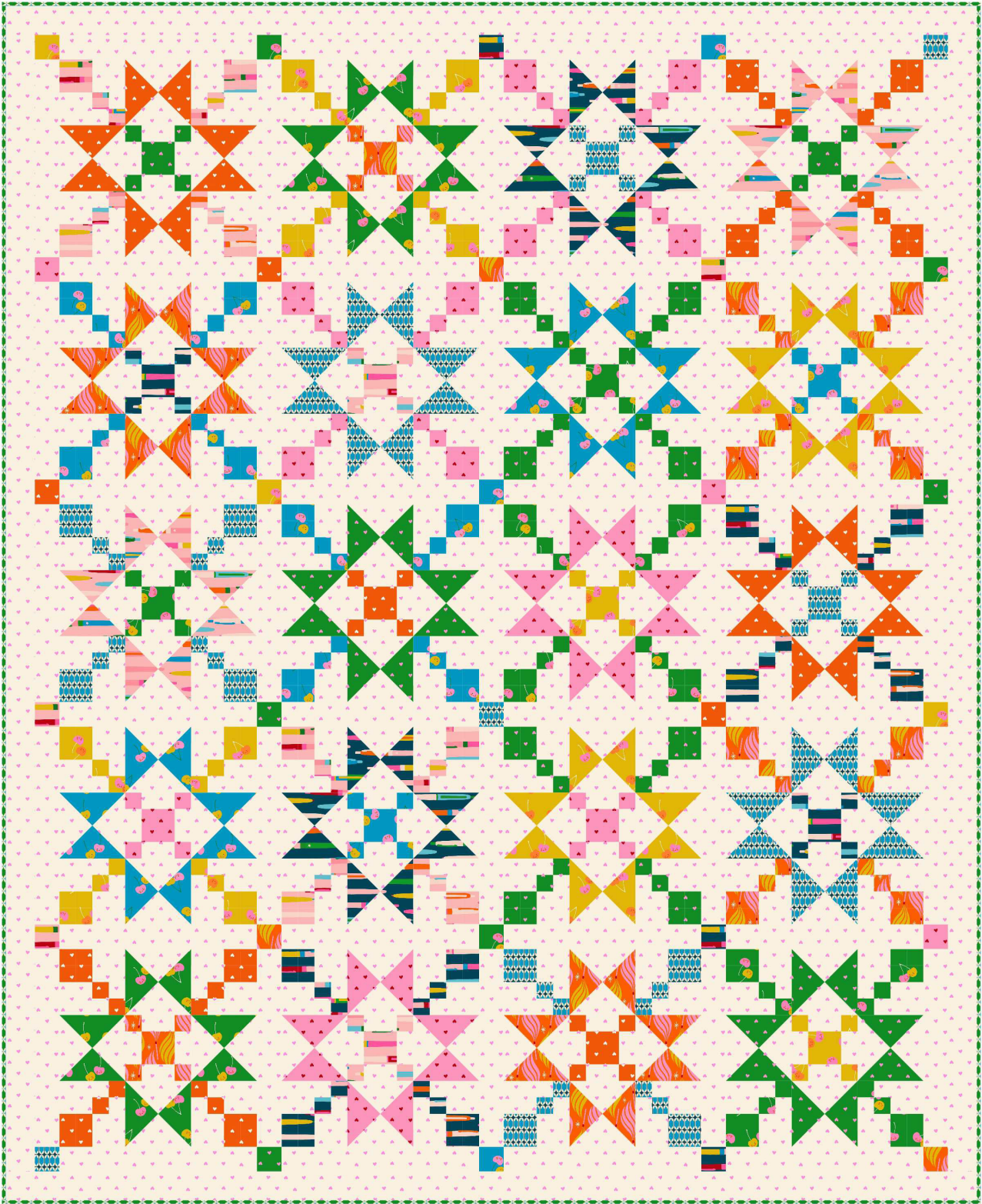
BACKING

4¼ yds

42½ yds



★ RUBY STAR SOCIETY ★ RUBY STAR SOCIETY ★ RUBY STAR SOCIETY ★ RUBY STAR SOCIETY ★ RUBY STAR SOCIETY ★ RUBY STAR SOCIETY ★ RUBY STAR SOCIETY ★ RUBY STAR SOCIETY ★ RUBY STAR SOCIETY ★ RUBY STAR SOCIETY ★



SCENIC WAYPOINT by Meadow Mist Designs

MMD 1046

60" x 73½"

RETAIL PRICE:
\$12.00



yardage requirements



RS0091 27



BLOCKS

¼ yds

10 QUILTS

2½ yds



RS0091 28



BLOCKS

¼ yds

2½ yds



RS0091 34



BLOCKS

¼ yds

2½ yds



RS0110 18



BLOCKS

¼ yds

2½ yds



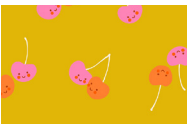
RS0110 20



BLOCKS

¼ yds

2½ yds



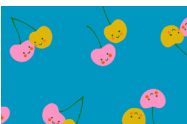
RS0112 12



BLOCKS

¼ yds

2½ yds



RS0112 14



BLOCKS

¼ yds

2½ yds



RS0112 15



BLOCKS

¼ yds

2½ yds



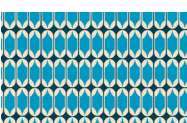
RS0113 16



BLOCKS

¼ yds

2½ yds



RS0115 16



BLOCKS

¼ yds

2½ yds



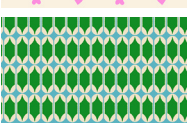
RS0091 22



BACKGROUND

3⅞ yds

38¾ yds



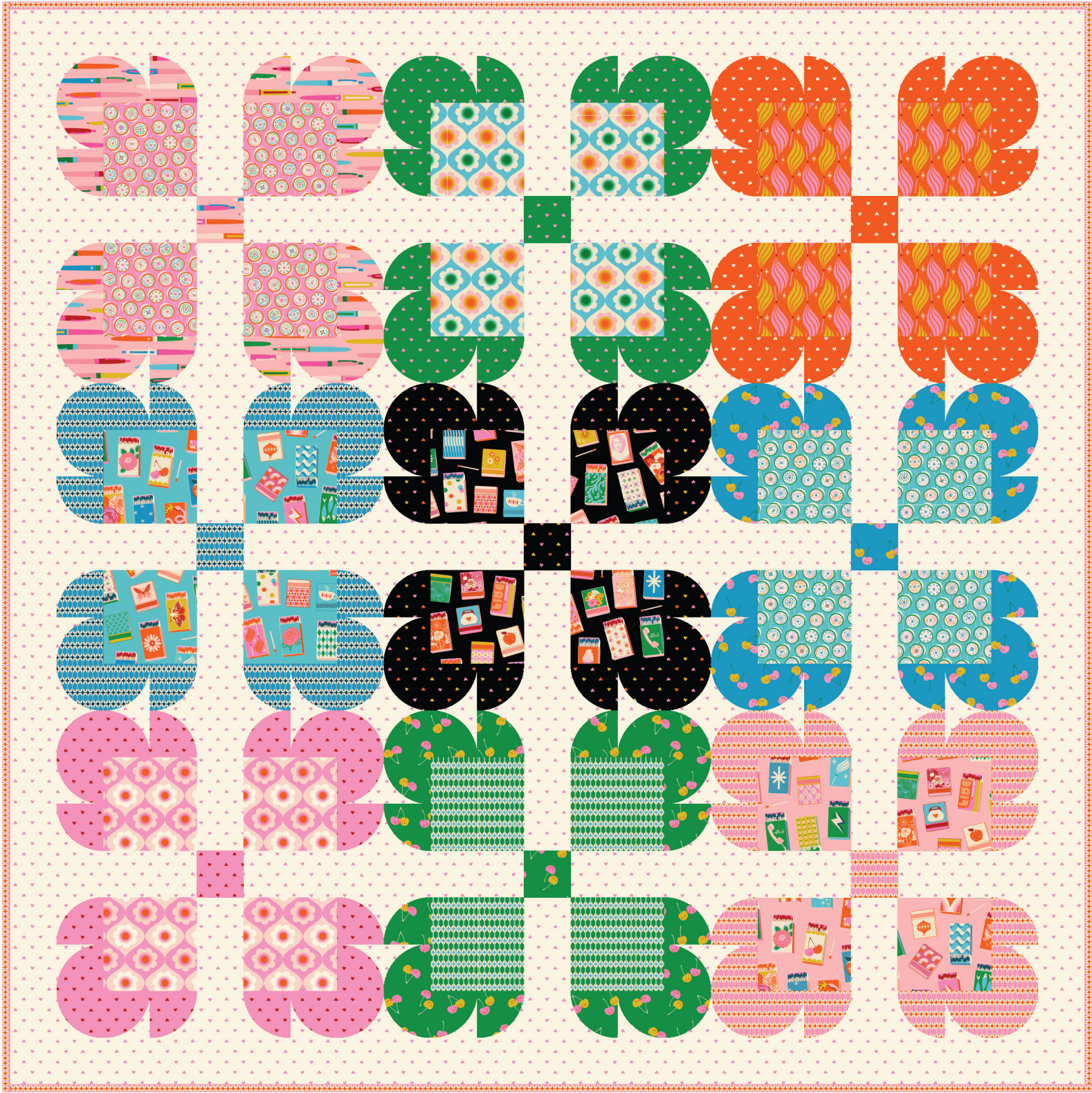
RS0115 17



BINDING

⅝ yds

6¼ yds



yardage requirements

1 QUILT 10 QUILTS

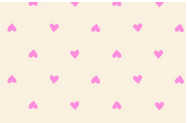
RS0109 FQ



BLOCKS

1 fq bundle 10 fq bundles

USES 18 OUT OF 28 FAT QUARTERS

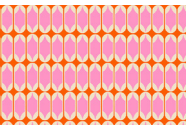


RS0091 22



BACKGROUND

3 yds 30 yds

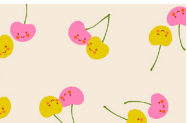


RS0115 12



BINDING

$\frac{5}{8}$ yds 6 $\frac{1}{4}$ yds



RS0112 11



BACKING

4 $\frac{1}{2}$ yds 45 yds

TEDDY BEAR PAW QUILT by Holly Clarke Design

HCD 019

70" x 70"

RETAIL PRICE:
\$16.00





LITTLE HOLLAND QUILT

by Crinkly Quilts

CQ 018

60" x 60"

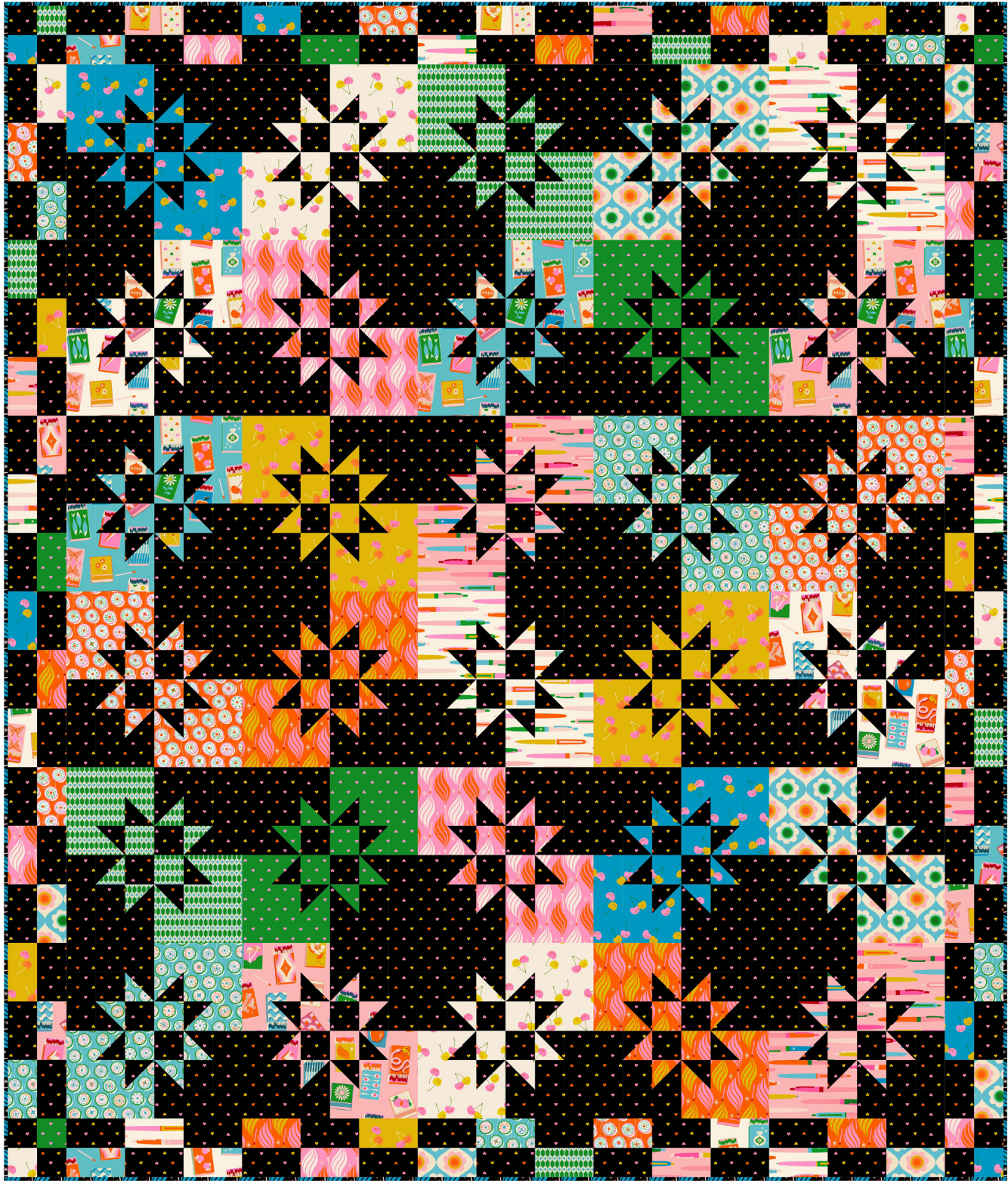
RETAIL PRICE:
\$14.00

6 49310 95348 6

yardage requirements		1 QUILT	10 QUILTS
	RS0091 27 7 52106 86815 1	BLOCKS 1/3 yds	 RS0091 22 7 52106 86814 4 BLOCKS 1/3 yds 3 1/3 yds
	RS0113 16 7 52106 86834 2	BLOCKS 1/3 yds	 RS0112 12 7 52106 86830 4 BLOCKS 1/4 yds 2 1/2 yds
	RS0091 34 7 52106 86817 5	BLOCKS 2/3 yds	 RS0091 36 7 52106 86818 2 BACKGROUND 2 1/2 yds 25 yds
	RS0114 14 7 52106 86836 6	BLOCKS 1/8 yds	 RS0091 28 7 52106 86816 8 BINDING 5/8 yds 6 1/4 yds
	RS0114 17 7 52106 86837 3	BLOCKS 1/8 yds	1 1/4 yds
	RS0114 18 7 52106 86838 0	BLOCKS 1/8 yds	1 1/4 yds
	RS0111 18 7 52106 86828 1	BLOCKS 1/3 yds	3 1/3 yds
	RS0113 15 7 52106 86833 5	BLOCKS 1/3 yds	3 1/3 yds
	RS0091 28 7 52106 86816 8	BLOCKS 1/3 yds	3 1/3 yds
	RS0115 12 7 52106 86839 7	BLOCKS 1/3 yds	3 1/3 yds
	RS0115 16 7 52106 86840 3	BLOCKS 1/3 yds	3 1/3 yds
	RS0112 11 7 52106 86829 8	BLOCKS 1/3 yds	3 1/3 yds



★ RUBY STAR SOCIETY ★ RUBY STAR SOCIETY ★ RUBY STAR SOCIETY ★ RUBY STAR SOCIETY ★ RUBY STAR SOCIETY ★ RUBY STAR SOCIETY ★ RUBY STAR SOCIETY ★ RUBY STAR SOCIETY ★ RUBY STAR SOCIETY ★ RUBY STAR SOCIETY ★



SPLIT STAR by Copper Kettle Quilt Co

CKQ 2421

68½" x 80½"

RETAIL PRICE:
\$12.00


8 60013 99041 1

yardage requirements



RS0091 34

7 52106 86817 5

1 QUILT

BLOCKS
¼ yds

10 QUILTS

2½ yds



RS0109 11

7 52106 86819 9

BLOCKS
¼ yds

2½ yds



RS0109 13

7 52106 86820 5

BLOCKS
¼ yds

2½ yds



RS0109 18

7 52106 86821 2

BLOCKS
¼ yds

2½ yds



RS0110 11

7 52106 86823 6

BLOCKS
¼ yds

2½ yds



RS0110 18

7 52106 86824 3

BLOCKS
¼ yds

2½ yds

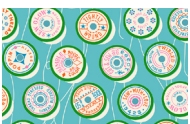


RS0111 13

7 52106 86826 7

BLOCKS
¼ yds

2½ yds

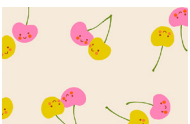


RS0111 18

7 52106 86828 1

BLOCKS
¼ yds

2½ yds

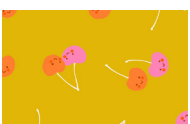


RS0112 11

7 52106 86829 8

BLOCKS
¼ yds

2½ yds

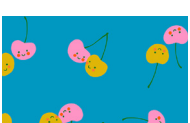


RS0112 12

7 52106 86830 4

BLOCKS
¼ yds

2½ yds



RS0112 14

7 52106 86831 1

BLOCKS
¼ yds

2½ yds



RS0113 15

7 52106 86833 5

BLOCKS
¼ yds

2½ yds



RS0113 16

7 52106 86834 2

BLOCKS
¼ yds

2½ yds

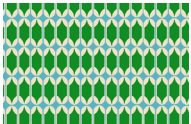


RS0114 18

7 52106 86838 0

BLOCKS
¼ yds

2½ yds



RS0115 17

7 52106 86841 0

BLOCKS
¼ yds

2½ yds



RS0091 36

7 52106 86818 2

BACKGROUND
3⅓ yds

33⅓ yds



RS0113 17

7 52106 86835 9

BINDING
⅝ yds

6¼ yds



RS0109 18

7 52106 86821 2

BACKING
5 yds

50 yds



DOT MATRIX QUILT

by Holly Clarke Designs

HCD 017	64" x 64"	RETAIL PRICE: \$14.00	
---------	-----------	--------------------------	---

yardage requirements

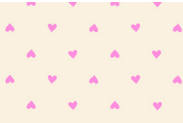
1 QUILT10 QUILTS

RS0109 FQ



BLOCKS
1 fq bundle10 fq bundles

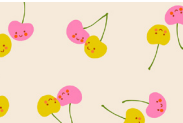
USES 16 OUT OF 28 FAT QUARTERS



RS0091 22



BACKGROUND
1 ½ yds15 yds



RS0112 11



BACKGROUND
1 ½ yds15 yds



RS0091 36



BINDING
½ yds5 yds



RS0109 11



BACKING
4 yds40 yds