

## 1 QUILT

## 10 QUILTS

**RS0102 FQ**

1 bundle

10 bundles

USES 14 OUT OF 24 FAT QUARTERS

 $1\frac{3}{8}$  yds

13 $\frac{3}{4}$  yds

 $4\frac{5}{8}$  yds

46¼ yds



4½ yds

45 yds

 $\frac{5}{8}$  yds

6  $\frac{1}{4}$  yds

## STARS ABOVE by Megan Collins Quilt Design

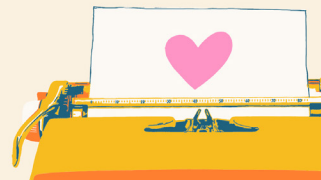
MCQ 015

63" x 72"

**RETAIL PRICE:**  
**\$13.00**







## 10 QUILTS



1 fq

10 f<sub>q</sub>



1 fq

10 f<sub>q</sub>



1 fq

10 f<sub>q</sub>



1 fq

10 f<sub>q</sub>



1 fq

10 f<sub>q</sub>



1 fq

10 f<sub>q</sub>



1 fq

10 f<sub>q</sub>



1 fq

10 f<sub>q</sub>



1 fq

10 f<sub>q</sub>



1 f<sub>q</sub>

10 f<sub>q</sub>

 $3\frac{5}{8}$  yds

36¼ yds



4½ yds

45 yds

 $\frac{5}{8}$  yds

6¼ yds

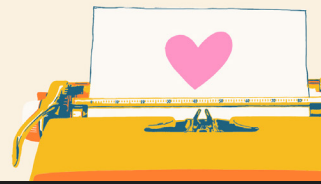
X0119

72" x 72"

**RETAIL PRICE:**  
**\$14.00**







## 10 QUILTS



1 yd

10 yds



1 yd

10 yds



1 yd

10 yds



1 yd

10 yds

 $\frac{5}{8}$  yds

6  $\frac{1}{4}$  yds

 $\frac{5}{8}$  yds

6  $\frac{1}{4}$  yds



1  $\frac{3}{4}$  yds

17½ yds

 $4\frac{5}{8}$  yds

46  $\frac{1}{4}$  yds

 $\frac{5}{8}$  yds

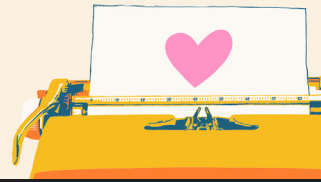
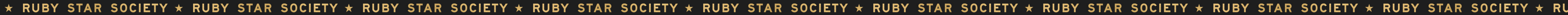
6  $\frac{1}{4}$  yds

## HCD 016

74" x 74"

RETAIL PRICE:  
\$14.00





## 10 QUILTS



1 yd

10 yds



1 yd

10 yds



1 yd

10 yds



1 yd

10 yds

 $\frac{5}{8}$  yds

6  $\frac{1}{4}$  yds

 $\frac{5}{8}$  yds

6¼ yds



1  $\frac{3}{4}$  yds

17½ yds

 $4\frac{5}{8}$  yds

46  $\frac{1}{4}$  yds

 $\frac{5}{8}$  vds

6 1/4 vds

HCD 016

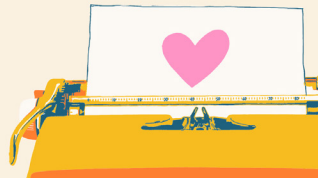
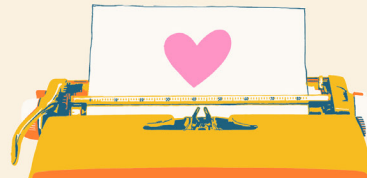
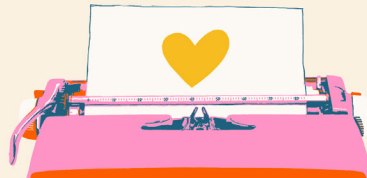
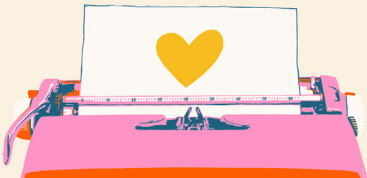
74" x 74"

RETAIL PRICE:  
\$14.00





★ RUBY STAR SOCIETY ★ RUBY STAR SOCIETY ★ RUBY STAR SOCIETY ★ RUBY STAR SOCIETY ★ RUBY STAR SOCIETY ★ RUBY STAR SOCIETY ★ RUBY STAR SOCIETY ★ RUBY STAR SOCIETY ★ RUBY STAR SOCIETY ★ RUBY STAR SOCIETY ★



APPAROTLY IT'S A PARTY by Love Sew Modern

LSM 115

60" x 77"

RETAIL PRICE:  
\$14.00

yardage requirements



RS0106 15

BIRD  
¾ yds



RS0091 19

BIRD  
¾ yds



RS0106 12

BIRD  
¾ yds



RS0091 16

BIRD  
¾ yds



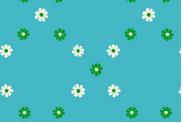
RS0091 17

FLOWER  
⅝ yds



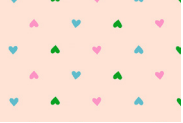
RS5027 111M

FLOWER  
⅙ yds



RS0107 16

FLOWER  
⅜ yds



RS0091 18

FLOWER  
⅙ yds



RS0107 14

FLOWER  
⅜ yds



RS0091 20

FLOWER  
⅙ yds



RS5027 111M

BEAK  
¼ yds



RS5027 26M

BEAK  
⅙ yds

10 QUILTS



RS5027 102

EYES  
⅙ yds ⅝ yds



RS0107 11

BACKGROUND  
3½ yds 35 yds



RS0106 11

BACKING  
4 yds 40 yds



RS0107 16

BINDING  
⅝ yds 6¼ yds

