

pips

BY ANEELA HOEY



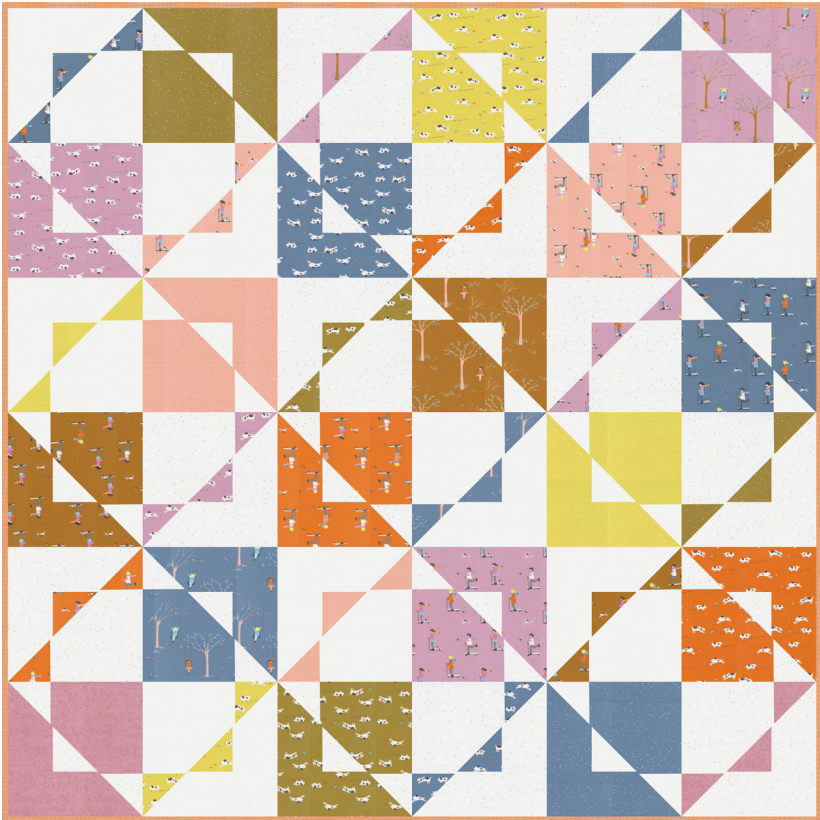
moda
FABRICS + SUPPLIES®

Star Trick

Aneela Hoey • 70" x 70"

AH 117

Retail \$12.50



Yardage Requirements

1 Quilt

10 Quilts



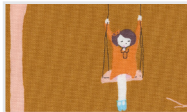
24590 13



blocks

FQ

2 1/2 yds



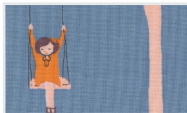
24590 14



blocks

FQ

2 1/2 yds



24590 15



blocks

FQ

2 1/2 yds



24591 13



blocks

FQ

2 1/2 yds



24591 14



blocks

FQ

2 1/2 yds



24591 15



blocks

FQ

2 1/2 yds



24591 16



blocks

FQ

2 1/2 yds



24591 18



blocks

FQ

2 1/2 yds



24592 12



blocks

FQ

2 1/2 yds



24592 13



blocks

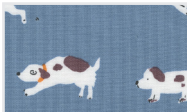
FQ

2 1/2 yds

Yardage Requirements

1 Quilt

10 Quilts



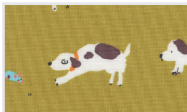
24592 15



blocks

FQ

2 1/2 yds



24592 17



blocks

FQ

2 1/2 yds



24592 18



blocks

FQ

2 1/2 yds



24593 12



blocks

FQ

2 1/2 yds



24593 15



blocks

FQ

2 1/2 yds



24593 16



blocks

FQ

2 1/2 yds



24593 17



blocks

FQ

2 1/2 yds



24595 13



blocks

FQ

2 1/2 yds



24593 11



blocks

1 1/4

12 1/2 yds



24595 21



blocks

1 1/4

12 1/2 yds



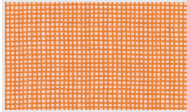
24590 11



backing

4 1/2

45 yds



24596 18



binding

5/8

6 1/4 yds

More Quilt Sizes Available

pips

BY ANEELA HOEY



Twice As Nice Pouch

Aneela Hoey • 10" x 6"

AH 113

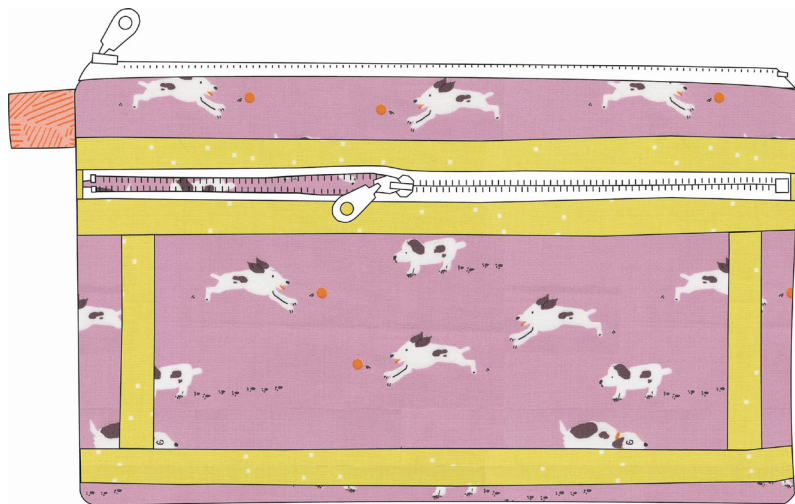
Retail \$11.00



Yardage Requirements	1 Quilt	10 Quilts
----------------------	---------	-----------

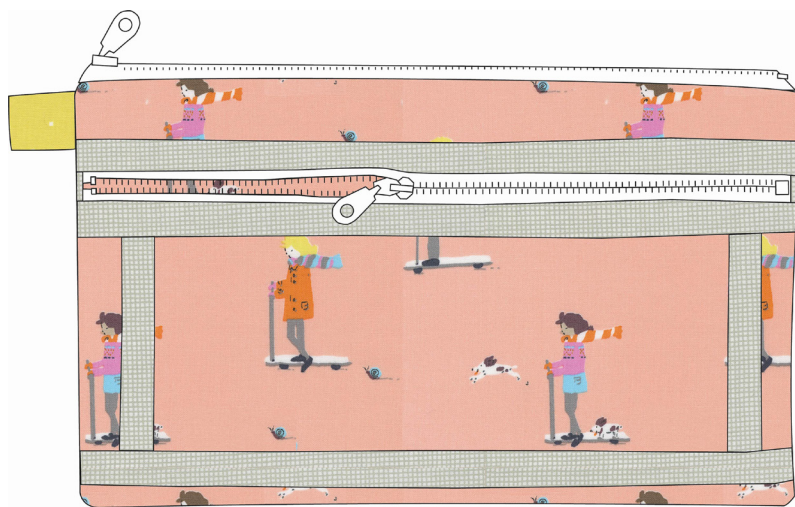
Option 1

	24592 13	exterior	
		FQ	2 1/2 yds
	24595 16	lining, tab	
		FQ	2 1/2 yds
	24593 12	binding	
		1/8	1 1/4 yds



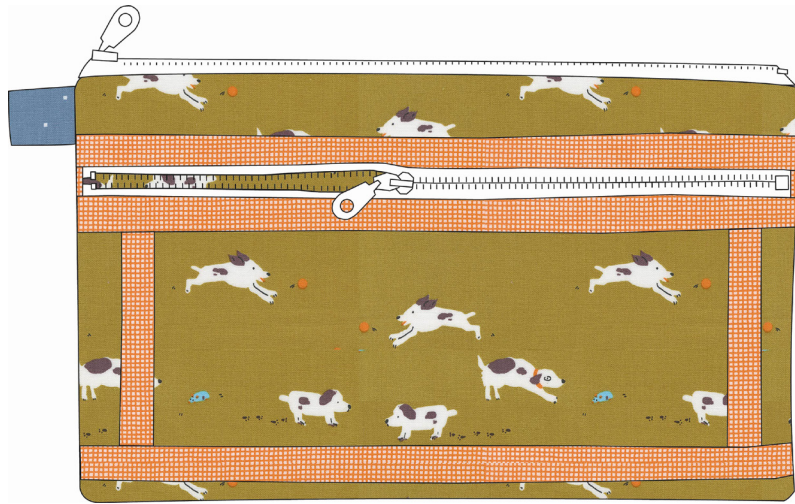
Option 2

	24591 16	exterior	
		FQ	2 1/2 yds
	24593 12	lining, tab	
		FQ	2 1/2 yds
	24596 19	binding	
		1/8	1 1/4 yds



Option 3

	24592 17	exterior	
		FQ	2 1/2 yds
	24593 15	lining, tab	
		FQ	2 1/2 yds
	24596 18	binding	
		1/8	1 1/4 yds



pips

BY ANEELA HOEY



moda
FABRICS + SUPPLIES®

4 Pocket Case

Aneela Hoey • 10" x 13"

AH 116

Retail \$12.50

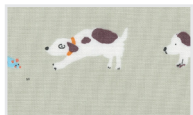


Yardage Requirements

1 Quilt

10 Quilts

Option 1



24592 19



cover exterior

FQ 2 1/2 yds

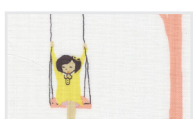


24593 12



cover lining

FQ 2 1/2 yds



24590 11



pockets front

FQ 2 1/2 yds

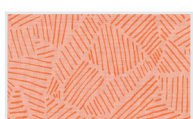


24596 19



pockets back

FQ 2 1/2 yds



24595 16



binding, tab

FQ 2 1/2 yds

Option 2

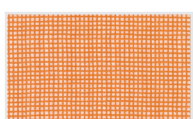


24590 14



cover exterior

FQ 2 1/2 yds

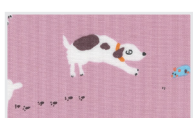


24596 18



cover lining

FQ 2 1/2 yds



24592 13



pockets front

FQ 2 1/2 yds



24593 13



pockets back

FQ 2 1/2 yds



24593 15



binding, tab

FQ 2 1/2 yds

Option 3

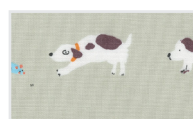


24590 13



cover exterior

FQ 2 1/2 yds

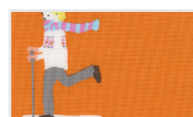


24592 19



cover lining

FQ 2 1/2 yds



24591 18



pockets front

FQ 2 1/2 yds

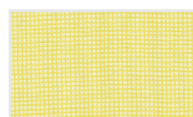


24596 19



pockets back

FQ 2 1/2 yds



24596 12



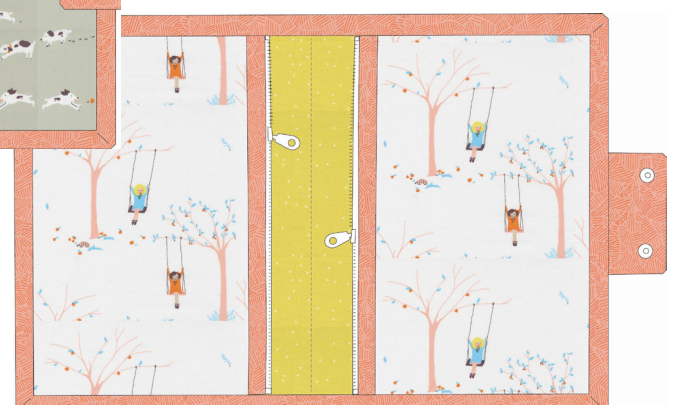
binding, tab

FQ 2 1/2 yds

Size stated is closed pouch in large size.
Pattern has 2 size options included.
Options below can be made in either size.
Illustrations shown as large size.



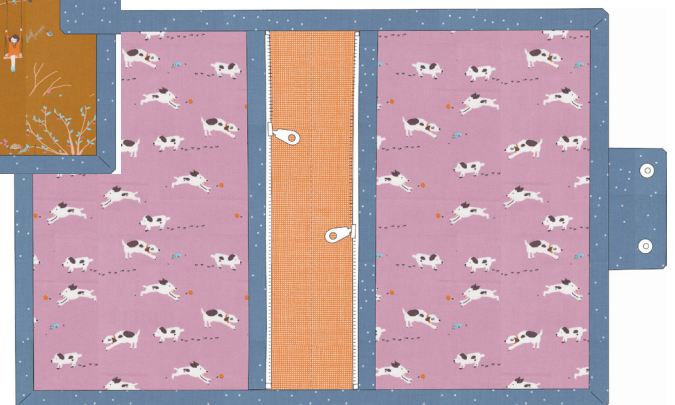
Closed



Open



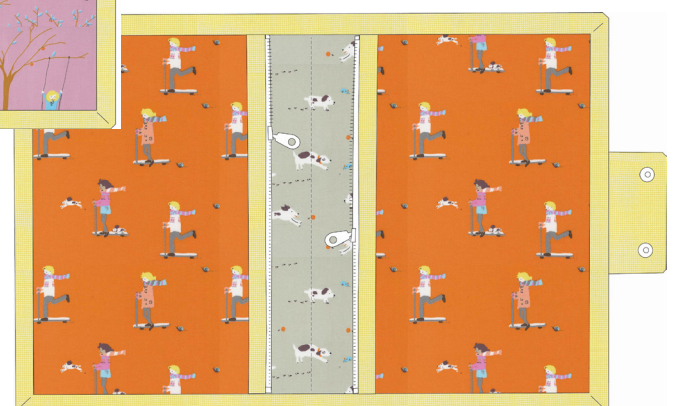
Closed



Open



Closed



Open

pips

BY ANEELA HOEY



Zip Up Tray Pouch

Aneela Hoey • 11" x 4" x 4"

AH 101

Retail \$12.50



Size stated is of closed pouch.
Pattern available now!

Yardage Requirements

1 Quilt

10 Quilts

Option 1



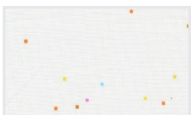
24590 15



exterior

FQ

2 1/2 yds



24593 11



lining

FQ

2 1/2 yds



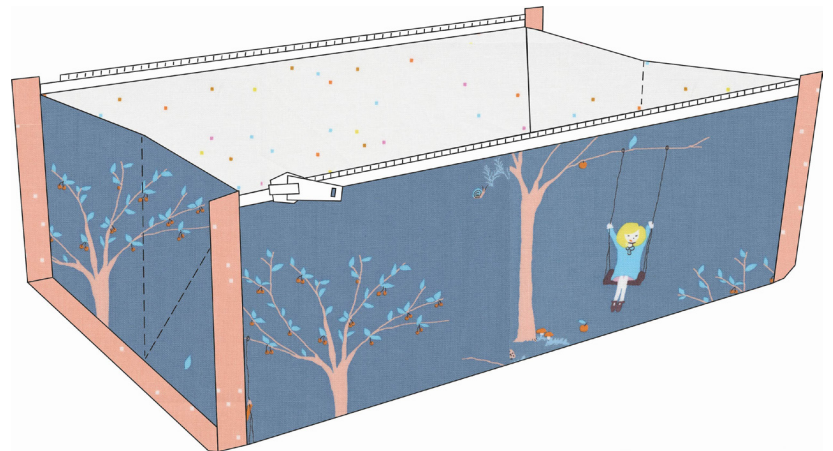
24593 16



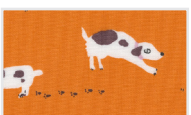
binding

FQ

2 1/2 yds



Option 2



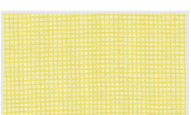
24592 18



exterior

FQ

2 1/2 yds



24596 12



lining

FQ

2 1/2 yds



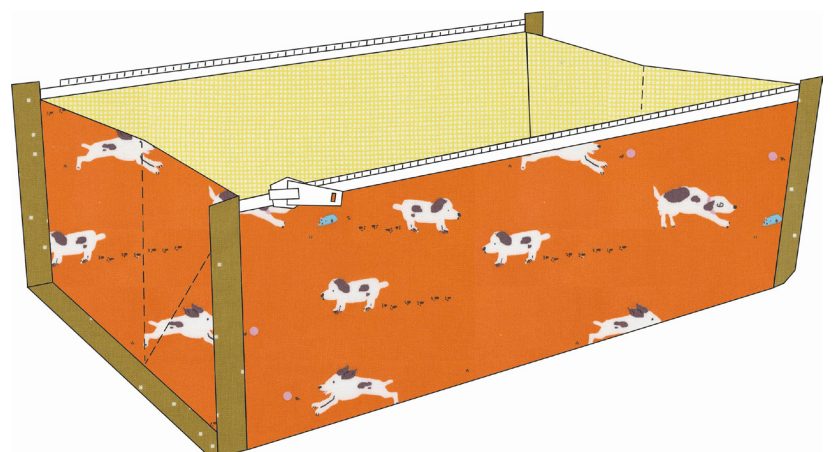
24593 17



binding

FQ

2 1/2 yds



Option 3



24593 12



exterior

FQ

2 1/2 yds



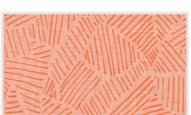
24596 19



lining

FQ

2 1/2 yds



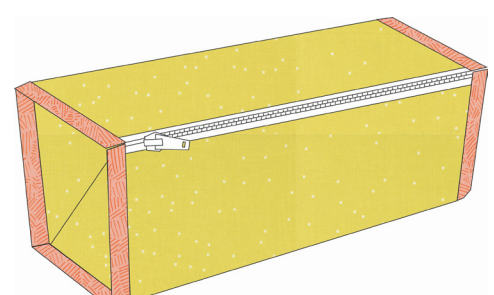
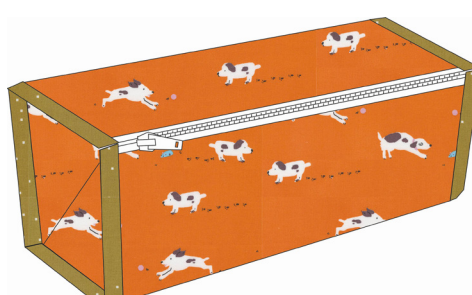
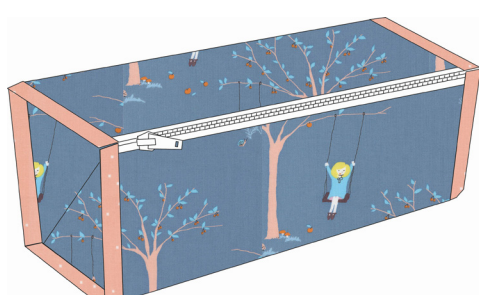
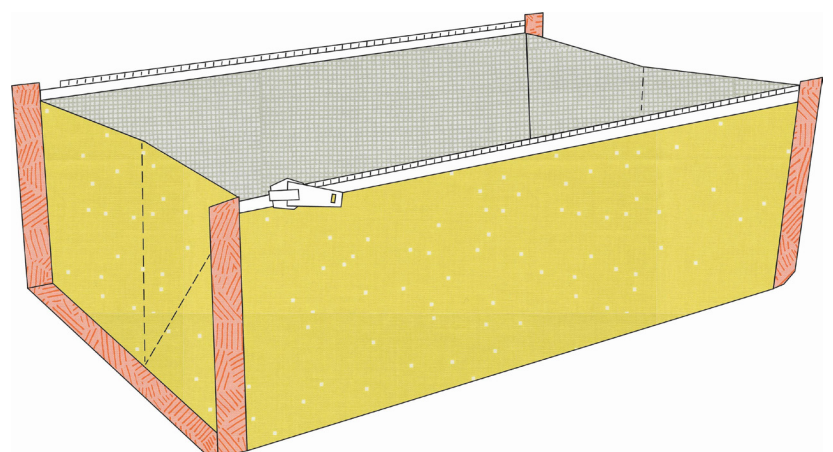
24595 16



binding

FQ

2 1/2 yds



Example of what each pouch looks like when closed.