

# HONEY & LAVENDER

## Deb Strain



moda  
FABRICS + SUPPLIES®

**All Day in the Garden**  
Coach House Designs • 46" x 54"  
CHD 2312    Retail \$12.00    5 93220 23022 2



Daybreak Version

Yardage Requirements	1 Quilt	10 Quilts
----------------------	---------	-----------

	<b>56081 12</b> 7 52106 74763 0	Blocks <b>1/4 yd</b>	2 1/2 yds
	<b>56081 17</b> 7 52106 74764 7	Blocks <b>1/8 yd</b>	1 1/4 yds
	<b>56081 18</b> 7 52106 74765 4	Blocks <b>1/4 yd</b>	2 1/2 yds
	<b>56082 24</b> 7 52106 74767 8	Blocks <b>1/4 yd</b>	2 1/2 yds
	<b>56082 27</b> 7 52106 74768 5	Blocks <b>1/4 yd</b>	2 1/2 yds
	<b>56082 29</b> 7 52106 74769 2	Blocks <b>1/4 yd</b>	2 1/2 yds
	<b>56083 11</b> 7 52106 74770 8	Blocks & Border <b>1/2 yd</b>	5 yds
	<b>56083 17</b> 7 52106 74772 2	Blocks <b>1/8 yd</b>	1 1/4 yds
	<b>56085 11</b> 7 52106 74778 4	Blocks & Border <b>2 yds</b>	20 yds
	<b>56085 15</b> 7 52106 74781 4	Blocks <b>1/4 yd</b>	2 1/2 yds
	<b>56085 17</b> 7 52106 74782 1	Blocks <b>1/8 yd</b>	1 1/4 yds
	<b>56087 11</b> 7 52106 74790 6	Blocks <b>1/2 yd</b>	5 yds
	<b>56087 18</b> 7 52106 74792 0	Blocks & Border <b>1/4 yd</b>	2 1/2 yds
	<b>56087 18</b> 7 52106 74792 0	Binding <b>3/8 yd</b>	3 3/4 yds
	<b>56080 11</b> 7 52106 74755 5	Backing <b>3 yds</b>	30 yds

and flowers please. on a day when honey - long you can. anything kind. You

# HONEY & LAVENDER

## Deb Strain



moda  
FABRICS + SUPPLIES®

### All Day in the Garden

Coach House Designs • 46" x 54"

CHD 2312

Retail \$12.00



Dusk Version

### Yardage Requirements

1 Quilt

10 Quilts



56080 11



Blocks

1/4 yd

2 1/2 yds



56081 12



Blocks

1/4 yd

2 1/2 yds



56081 17



Blocks

1/8 yd

1 1/4 yds



56081 18



Blocks

1/4 yd

2 1/2 yds



56082 24



Blocks

1/4 yd

2 1/2 yds



56082 27



Blocks

1/4 yd

2 1/2 yds



56082 29



Blocks

1/4 yd

2 1/2 yds



56083 17



Blocks & Border

1/2 yd

5 yds



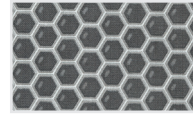
56085 15



Blocks

1/4 yd

2 1/2 yds



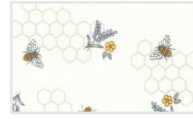
56085 17



Blocks

1/8 yd

1 1/4 yds



56087 11



Blocks

1/2 yd

5 yds



56087 12



Border

1/4 yd

2 1/2 yds



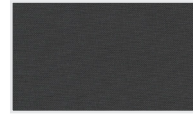
56087 18



Blocks

1/8 yd

1 1/4 yds



9900 284



Blocks & Border

2 yds

20 yds



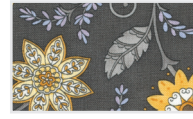
56087 12



Binding

3/8 yd

3 3/4 yds



56080 17



Backing

3 yds

30 yds

and flowers purple in a field where honey bees fly about. Kind, You ~ long you can, anything kind,

# HONEY & LAVENDER

## Deb Strain



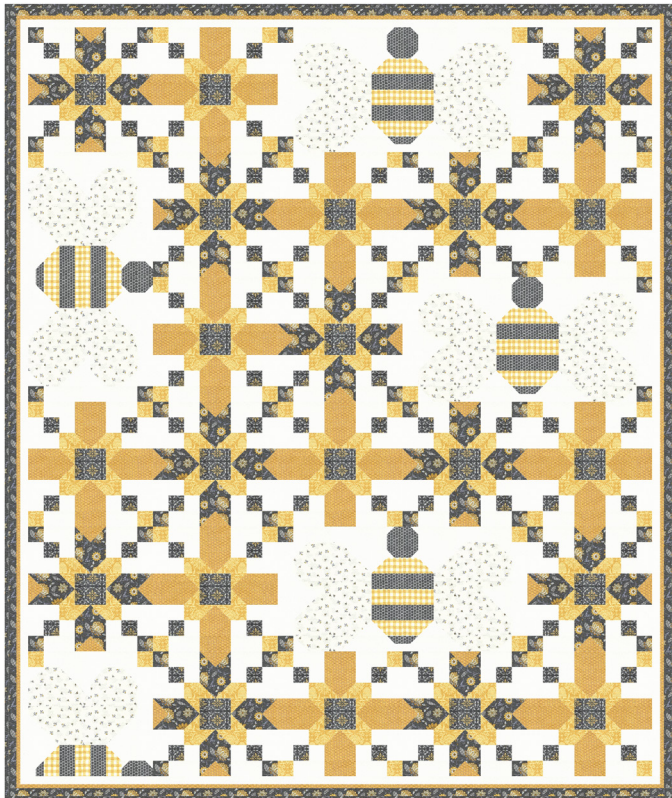
moda  
FABRICS + SUPPLIES®

### Honeycomb

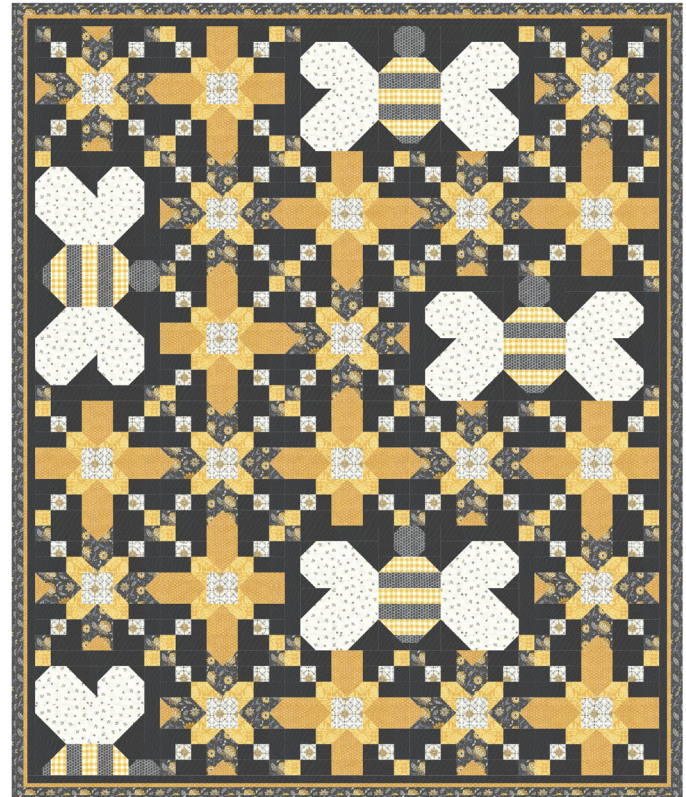
Coach House Designs • 85" x 101"

CHD 2313

Retail \$12.00



Daybreak Version



Dusk Version

Yardage Requirements	1 Quilt	10 Quilts
----------------------	---------	-----------

	<b>56080 17</b> 7 52106 74757 9	Blocks & Border <b>1 7/8 yds</b> 18 3/4 yds
	<b>56081 17</b> 7 52106 74764 7	Blocks <b>7/8 yd</b> 8 3/4 yds
	<b>56082 24</b> 7 52106 74767 8	Blocks <b>1 1/2 yds</b> 15 yds
	<b>56085 11</b> 7 52106 74778 4	Blocks & Border <b>3 7/8 yds</b> 38 3/4 yds
	<b>56085 14</b> 7 52106 74780 7	Blocks & Border <b>1 5/8 yds</b> 16 1/4 yds
	<b>56085 17</b> 7 52106 74782 1	Blocks <b>1/4 yd</b> 2 1/2 yds
	<b>56086 12</b> 7 52106 74785 2	Blocks <b>1/4 yd</b> 2 1/2 yds
	<b>56087 11</b> 7 52106 74790 6	Blocks <b>1 1/8 yds</b> 11 1/4 yds
	<b>56080 17</b> 7 52106 74757 9	Binding <b>3/4 yd</b> 7 1/2 yds
	<b>56080 11</b> 7 52106 74755 5	Backing <b>7 5/8 yds</b> 76 1/4 yds
	<b>11174 36</b> 7 52106 59800 3	Backing Alternate <b>2 5/8 yds</b> 26 1/4 yds

Yardage Requirements	1 Quilt	10 Quilts
----------------------	---------	-----------

	<b>56080 17</b> 7 52106 74757 9	Blocks & Border <b>1 7/8 yds</b> 18 3/4 yds
	<b>56081 11</b> 7 52106 74761 6	Blocks <b>7/8 yd</b> 8 3/4 yds
	<b>56082 24</b> 7 52106 74767 8	Blocks <b>1 1/2 yds</b> 15 yds
	<b>56085 14</b> 7 52106 74780 7	Blocks & Border <b>1 5/8 yds</b> 16 1/4 yds
	<b>56085 17</b> 7 52106 74782 1	Blocks <b>1/4 yd</b> 2 1/2 yds
	<b>56086 12</b> 7 52106 74785 2	Blocks <b>1/4 yd</b> 2 1/2 yds
	<b>56087 11</b> 7 52106 74790 6	Blocks <b>1 1/8 yds</b> 11 1/4 yds
	<b>9900 284</b> 7 52106 08587 9	Blocks & Border <b>3 7/8 yds</b> 38 3/4 yds
	<b>56080 17</b> 7 52106 74757 9	Binding <b>3/4 yd</b> 7 1/2 yds
	<b>56080 17</b> 7 52106 74757 9	Backing <b>7 5/8 yds</b> 76 1/4 yds
	<b>11174 85</b> 7 52106 59802 7	Backing Alternate <b>2 5/8 yds</b> 26 1/4 yds



# HONEY & LAVENDER

## Deb Strain

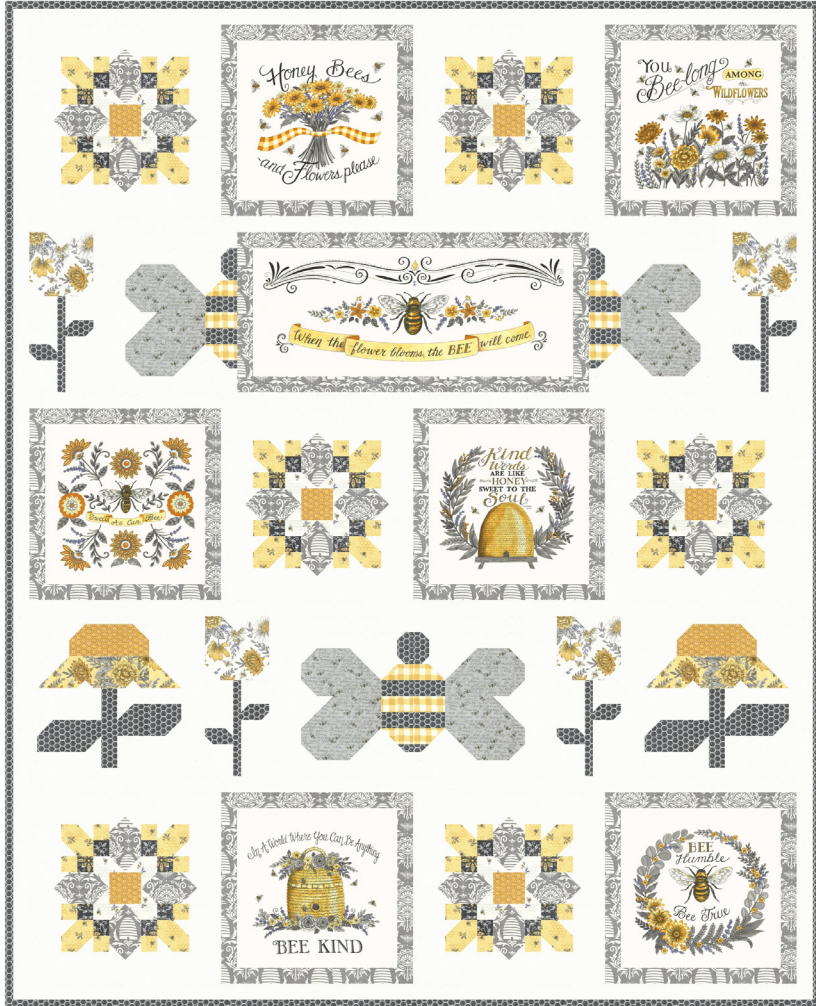


### Honey To The Soul

Coach House Designs • 50" x 58"

CHD 2314

Retail \$12.00



Day Version

### Yardage Requirements

1 Quilt

10 Quilts

	<b>56089 11</b>	Blocks	
	7 52106 74795 1	<b>1 Panel</b>	10 Panels
	<b>56081 17</b>	Blocks	
	7 52106 74764 7	<b>1/8 yd</b>	1 1/4 yds
	<b>56082 27</b>	Blocks	
	7 52106 74768 5	<b>5/8 yd</b>	6 1/4 yds
	<b>56083 11</b>	Blocks	
	7 52106 74770 8	<b>1/8 yd</b>	1 1/4 yds
	<b>56083 12</b>	Blocks	
	7 52106 74771 5	<b>1/8 yd</b>	1 1/4 yds
	<b>56084 15</b>	Blocks	
	7 52106 74777 7	<b>1/4 yd</b>	2 1/2 yds
	<b>56085 11</b>	Blocks & Border	
	7 52106 74778 4	<b>1 7/8 yds</b>	18 3/4 yds
	<b>56085 14</b>	Blocks	
	7 52106 74780 7	<b>1/8 yd</b>	1 1/4 yds
	<b>56085 17</b>	Blocks	
	7 52106 74782 1	<b>1/4 yd</b>	2 1/2 yds
	<b>56086 12</b>	Blocks	
	7 52106 74785 2	<b>1/8 yd</b>	1 1/4 yds
	<b>56087 11</b>	Blocks	
	7 52106 74790 6	<b>1/4 yd</b>	2 1/2 yds
	<b>56087 12</b>	Blocks	
	7 52106 74791 3	<b>1/4 yd</b>	2 1/2 yds
	<b>56085 17</b>	Binding	
	7 52106 74782 1	<b>1/2 yd</b>	5 yds
	<b>56083 11</b>	Backing	
	7 52106 74770 8	<b>3 1/8 yds</b>	31 1/4 yds

# HONEY & LAVENDER

## Deb Strain



moda  
FABRICS + SUPPLIES®

### Honey To The Soul

Coach House Designs • 50" x 58"

CHD 2314

Retail \$12.00



Night Version

### Yardage Requirements

1 Quilt

10 Quilts



56089 17



Blocks

1 panel

10 panels



56080 17



Blocks

1/2 yd

5 yds



56080 11



Blocks

1/8 yd

1 1/4 yds



56081 17



Blocks

1/8 yd

1 1/4 yds



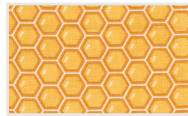
56082 24



Blocks

3/8 yd

3 3/4 yds



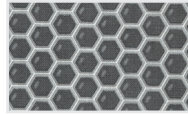
56085 14



Blocks

1/8 yd

1 1/4 yds



56085 17



Blocks

1/2 yd

5 yds



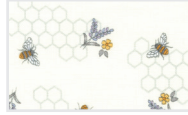
56086 12



Blocks

1/8 yd

1 1/4 yds



56087 11



Blocks

5/8 yd

6 1/4 yds



9900 284



Blocks & Border

1 3/4 yds

17 1/2 yds



56085 17



Binding

1/2 yd

5 yds



56083 17



Backing

3 1/8 yds

31 1/4 yds



# HONEY & LAVENDER

## Deb Strain



moda  
FABRICS + SUPPLIES®

### Bees in the Garden

Coach House Designs • 56" x 64"

CHD 2302

Retail \$11.00



### Spring Sampler

Designs by Lavender Lime • 60 1/2" x 72 1/2"

DLL 204

Retail \$19.99



#### Yardage Requirements

1 Quilt

10 Quilts



56089 12



Blocks

1 Panel

10 Panels



56080 11



Border

1/2 yd

5 yds



56082 24



Blocks

5/8 yd

6 1/4 yds



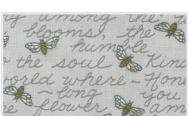
56082 27



Blocks

5/8 yd

6 1/4 yds



56084 15



Blocks

3/8 yd

3 3/4 yds



56085 11



Blocks & Border

1 5/8 yds

16 1/4 yds



56086 16



Blocks & Border

3/8 yd

3 3/4 yds



56087 12



Blocks

3/8 yd

3 3/4 yds



56084 15



Binding

5/8 yd

6 1/4 yds



56080 11



Backing

3 1/2 yds

35 yds

#### Yardage Requirements

1 Quilt

10 Quilts



56089 17



Blocks

1 Panel

10 Panels



56080 11



Blocks

3/4 yd

7 1/2 yds



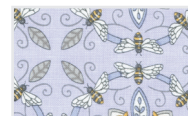
56080 17



Blocks

3/4 yd

7 1/2 yds



56081 18



Blocks

7/8 yd

8 3/4 yds



56082 24



Blocks

3/4 yd

7 1/2 yds



56082 29



Blocks

5/8 yd

6 1/4 yds



56085 15



Blocks

3/4 yd

7 1/2 yds



56085 17



Blocks

1/2 yd

5 yds



56087 12



Blocks

3/8 yd

3 3/4 yds



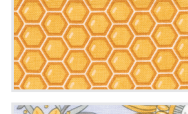
56088 11



Blocks

1 3/4 yds

17 1/2 yds



56085 14



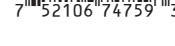
Binding

5/8 yd

6 1/4 yds



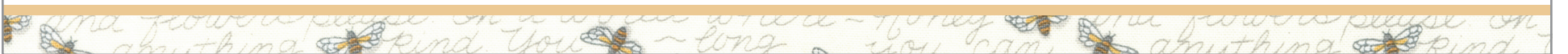
56080 18



Backing

4 1/2 yds

45 yds



# HONEY & LAVENDER

## Deb Strain



moda  
FABRICS + SUPPLIES®

### Spring Table

Designs by Lavender Lime • Multiple Sizes

DLL 205 Retail \$16.99



Long Runner 60 1/2" x 12 1/2"

- |  |                 |                |           |
|--|-----------------|----------------|-----------|
|  | <b>56089 17</b> | Blocks         |           |
|  |                 | <b>1 Panel</b> | 10 Panels |
|  | <b>56080 17</b> | Blocks         |           |
|  |                 | <b>3/8 yd</b>  | 3 3/4 yds |
|  | <b>56085 17</b> | Blocks         |           |
|  |                 | <b>1/4 yd</b>  | 2 1/2 yds |
|  | <b>56087 11</b> | Blocks         |           |
|  |                 | <b>1/2 yd</b>  | 5 yds     |
|  | <b>56085 17</b> | Binding        |           |
|  |                 | <b>1/2 yd</b>  | 5 yds     |
|  | <b>56084 11</b> | Backing        |           |
|  |                 | <b>1 yd</b>    | 10 yds    |

- |  |                 |                  |           |
|--|-----------------|------------------|-----------|
|  | <b>56089 17</b> | Blocks           |           |
|  |                 | <b>1 Panel</b>   | 10 Panels |
|  | <b>56085 17</b> | Blocks           |           |
|  |                 | <b>3/8 yd</b>    | 3 3/4 yds |
|  | <b>56087 11</b> | Blocks           |           |
|  |                 | <b>3/8 yd</b>    | 3 3/4 yds |
|  | <b>56088 11</b> | Border           |           |
|  |                 | <b>2 yds</b>     | 20 yds    |
|  | <b>56085 17</b> | Binding          |           |
|  |                 | <b>1/2 yd</b>    | 5 yds     |
|  | <b>56084 11</b> | Backing          |           |
|  |                 | <b>2 1/2 yds</b> | 25 yds    |



Short Runner 48 1/2" x 12 1/2"

- |  |                 |                |           |
|--|-----------------|----------------|-----------|
|  | <b>56089 17</b> | Blocks         |           |
|  |                 | <b>1 Panel</b> | 10 Panels |
|  | <b>56080 17</b> | Blocks         |           |
|  |                 | <b>1/4 yd</b>  | 2 1/2 yds |
|  | <b>56084 15</b> | Blocks         |           |
|  |                 | <b>3/8 yd</b>  | 3 3/4 yds |
|  | <b>56085 17</b> | Blocks         |           |
|  |                 | <b>1/4 yd</b>  | 2 1/2 yds |
|  | <b>56087 11</b> | Blocks         |           |
|  |                 | <b>3/8 yd</b>  | 3 3/4 yds |
|  | <b>56085 17</b> | Binding        |           |
|  |                 | <b>1/2 yd</b>  | 5 yds     |
|  | <b>56084 11</b> | Backing        |           |
|  |                 | <b>1 yd</b>    | 10 yds    |



Placemats 18 1/2" x 12 1/2"

- |  |                 |                  |            |
|--|-----------------|------------------|------------|
|  | <b>56089 17</b> | Blocks           |            |
|  |                 | <b>1 Panel</b>   | 10 Panels  |
|  | <b>56080 17</b> | Blocks           |            |
|  |                 | <b>1/2 yd</b>    | 5 yds      |
|  | <b>56087 11</b> | Blocks           |            |
|  |                 | <b>1/2 yd</b>    | 5 yds      |
|  | <b>56085 17</b> | Blocks           |            |
|  |                 | <b>3/8 yd</b>    | 3 3/4 yds  |
|  | <b>56085 17</b> | Binding          |            |
|  |                 | <b>1 1/4 yds</b> | 12 1/2 yds |
|  | <b>56084 11</b> | Backing          |            |
|  |                 | <b>1 1/4 yds</b> | 12 1/2 yds |



# HONEY & LAVENDER

## Deb Strain



### Honey Bee 23

Jan Patek Quilts • 46" x 46"

JPQ 2279

Retail \$9.00



### Yardage Requirements

1 Quilt	10 Quilts
---------	-----------

	<b>56080 18</b> 7 52106 74759 3	Applique <b>1/4 yd</b>	2 1/2 yds
	<b>56081 11</b> 7 52106 74761 6	Rectangles <b>1/2 yd</b>	5 yds
	<b>56081 12</b> 7 52106 74763 0	Squares <b>1/4 yd</b>	2 1/2 yds
	<b>56082 24</b> 7 52106 74767 8	Squares <b>1/4 yd</b>	2 1/2 yds
	<b>56082 29</b> 7 52106 74769 2	Applique <b>1/8 yd</b>	1 1/4 yds
	<b>56083 17</b> 7 52106 74772 2	Borders <b>3/4 yd</b>	7 1/2 yds
	<b>56085 14</b> 7 52106 74780 7	Applique <b>1/8 yd</b>	1 1/4 yds
	<b>56085 17</b> 7 52106 74782 1	Applique <b>2/3 yd</b>	6 2/3 yds
	<b>56086 12</b> 7 52106 74785 2	Applique <b>1/8 yd</b>	1 1/4 yds
	<b>56086 17</b> 7 52106 74788 3	Squares <b>1/4 yd</b>	2 1/2 yds
	<b>56086 18</b> 7 52106 74789 0	Applique <b>1/8 yd</b>	1 1/4 yds
	<b>56087 11</b> 7 52106 74790 6	Rectangles & Bkgd <b>1 yd</b>	10 yds
	<b>56087 12</b> 7 52106 74791 3	Applique & Squares <b>1/3 yd</b>	3 1/3 yds
	<b>9900 33</b> 7 52106 65040 4	Applique <b>1/8 yd</b>	1 1/4 yds
	<b>9900 182</b> 7 52106 92491 8	Rectangles <b>FQ</b>	2 1/2 yds
	<b>9900 284</b> 7 52106 08587 9	Applique & Stop Brdr <b>1/3 yd</b>	3 1/3 yds
	<b>9900 284</b> 7 52106 08587 9	Binding <b>1/2 yd</b>	5 yds
	<b>9900 284</b> 7 52106 08587 9	Backing <b>3 yds</b>	30 yds



# HONEY & LAVENDER

## Deb Strain



### Honey & Lavender

Jan Patek Quilts • 36" x 36"

JPQ 2277

Retail \$9.00



### Yardage Requirements

1 Quilt

10 Quilts



56080 11



Half Square Triangles

**1/3 yd** 3 1/3 yds

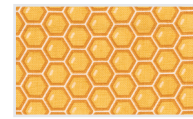


56082 29



Applique

**1/4 yd** 2 1/2 yds

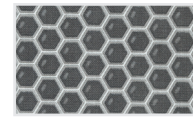


56085 14



Applique & Borders

**3/4 yd** 7 1/2 yds



56085 17



Applique

**F8** 1 1/2 yds



56085 19



Applique

**F8** 1 1/2 yds



56086 12



Applique

**F8** 1 1/2 yds



56086 18



Applique

**F8** 1 1/2 yds



56087 11



Bkgd & Corner Squares

**2/3 yd** 6 2/3 yds



56087 12



Applique & HSTs

**1/2 yd** 5 yds



56087 18



Applique

**1/2 yd** 5 yds

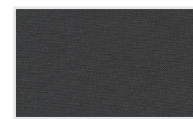


9900 284



Applique

**F8** 1 1/2 yds

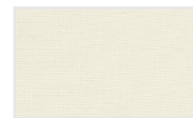


9900 284



Binding

**1/3 yd** 3 1/3 yds



9900 182



Backing

**2 3/8 yds** 23 3/4 yds

# HONEY & LAVENDER

## Deb Strain



### Glad To Bee Home

Jan Patek Quilts • 50" x 50"

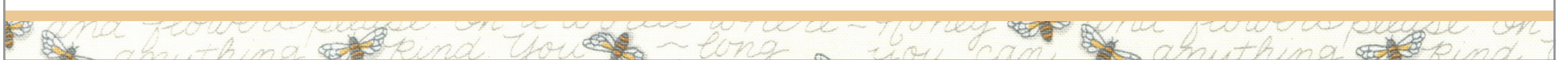
JPQ 2278

Retail \$9.00



Yardage Requirements	1 Quilt	10 Quilts
----------------------	---------	-----------

	<b>56080 18</b> 7 52106 74759 3	Borders <b>2/3 yd</b>	6 2/3 yds
	<b>56082 24</b> 7 52106 74767 8	Applique <b>1/2 yd</b>	5 yds
	<b>56082 29</b> 7 52106 74769 2	Applique & Pieced Stars <b>1/4 yd</b>	2 1/2 yds
	<b>56084 11</b> 7 52106 74774 6	Background <b>2/3 yd</b>	6 2/3 yds
	<b>56085 14</b> 7 52106 74780 7	Applique & Corner Squares <b>1/3 yd</b>	3 1/3 yds
	<b>56085 15</b> 7 52106 74781 4	Applique <b>1/4 yd</b>	2 1/2 yds
	<b>56085 17</b> 7 52106 74782 1	Applique <b>1/4 yd</b>	2 1/2 yds
	<b>56085 19</b> 7 52106 74784 5	Pieced Stars <b>1/4 yd</b>	2 1/2 yds
	<b>56086 16</b> 7 52106 74786 9	Applique <b>1/4 yd</b>	2 1/2 yds
	<b>56086 17</b> 7 52106 74788 3	Applique <b>1/4 yd</b>	2 1/2 yds
	<b>56087 11</b> 7 52106 74790 6	Applique & Bkgd <b>3/4 yd</b>	7 1/2 yds
	<b>56087 12</b> 7 52106 74791 3	Applique <b>1/2 yd</b>	5 yds
	<b>56087 18</b> 7 52106 74792 0	Applique & Sashing <b>2/3 yd</b>	6 2/3 yds
	<b>9900 33</b> 7 52106 65040 4	Applique & Stop Brdrs <b>1/3 yd</b>	3 1/3 yds
	<b>9900 83</b> 7 52106 20705 9	Applique <b>1/4 yd</b>	2 1/2 yds
	<b>9900 284</b> 7 52106 08587 9	Applique <b>1/3 yd</b>	3 1/3 yds
	<b>9900 33</b> 7 52106 65040 4	Binding <b>1/2 yd</b>	5 yds
	<b>9900 33</b> 7 52106 65040 4	Backing <b>3 1/6 yds</b>	31 3/4 yds



# HONEY & LAVENDER

## Deb Strain



### Summer's Bunnies

Jan Patek Quilts • 27" x 26"

JPQ 2280

Retail \$9.00



Yardage Requirements	1 Quilt	10 Quilts
----------------------	---------	-----------

	<b>56080 18</b> 7 52106 74759 3	Borders <b>1/3 yd</b>	3 1/3 yds
	<b>56082 24</b> 7 52106 74767 8	Applique <b>1/8 yd</b>	1 1/4 yds
	<b>56085 14</b> 7 52106 74780 7	Applique <b>FQ</b>	2 1/2 yds
	<b>56085 15</b> 7 52106 74781 4	Applique <b>1/8 yd</b>	1 1/4 yds
	<b>56085 19</b> 7 52106 74784 5	Applique & Rectangles <b>FQ</b>	2 1/2 yds
	<b>56086 17</b> 7 52106 74788 3	Applique <b>FQ</b>	2 1/2 yds
	<b>56086 18</b> 7 52106 74789 0	Applique & Bkgd <b>FQ</b>	2 1/2 yds
	<b>56087 11</b> 7 52106 74790 6	Background <b>1/3 yd</b>	3 1/3 yds
	<b>56087 12</b> 7 52106 74791 3	Applique <b>F8</b>	1 1/4 yds
	<b>56087 18</b> 7 52106 74792 0	Background <b>FQ</b>	2 1/2 yds
	<b>9900 12</b> 7 52106 56978 2	Applique <b>FQ</b>	1 1/4 yds
	<b>9900 33</b> 7 52106 65040 4	Applique <b>1/8 yd</b>	1 1/4 yds
	<b>9900 35</b> 7 52106 65042 8	Applique <b>1/8 yd</b>	1 1/4 yds
	<b>9900 83</b> 7 52106 20705 9	Applique <b>FQ</b>	2 1/2 yds
	<b>9900 182</b> 7 52106 92491 8	Applique <b>F8</b>	1 1/4 yds
	<b>9900 284</b> 7 52106 08587 9	Applique <b>F8</b>	1 1/4 yds
	<b>56085 14</b> 7 52106 74780 7	Binding <b>1/3 yd</b>	3 1/3 yds
	<b>9900 33</b> 7 52106 65040 4	Backing <b>1 yd</b>	10 yds