



**Braeburn**

Minick & Simpson • 60" x 60"

MS 2308      Retail \$15.00      8 50031 48116 9

KIT14980      Retail \$269.99      7 52106 80874 4



**KIT!**

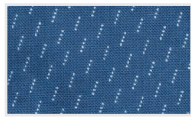
**Yardage Requirements**



**14980AB**

7 52106 78878 7

Blocks, applique  
**1 AB**      10 ABs



**14988 18**

7 52106 78913 5

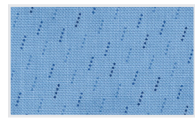
Applique  
**3/8 yd**      3 3/4 yds



**14988 11**

7 52106 78911 1

Background  
**4 yds**      40 yds



**14988 16**

7 52106 78912 8

Sashing, binding  
**3/4 yd**      7 1/2 yds



**14989 11**

7 52106 78914 2

Backing  
**4 yds**      40 yds



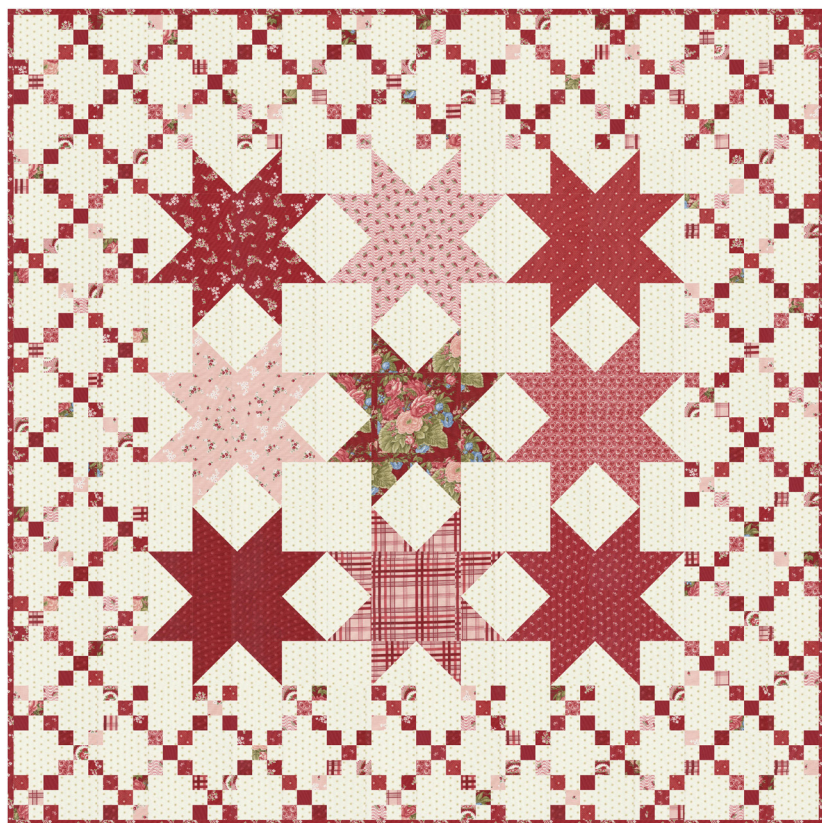


**Nantucket**

Minick & Simpson • 67 1/2" x 67 1/2"

MS 1302

Retail \$12.00



Red Colorway

Yardage Requirements		1 Quilt	10 Quilts
	<b>14980 15</b> 7 52106 78884 8	Blocks <b>FQ</b>	2 1/2 yds
	<b>14981 12</b> 7 52106 78887 9	Blocks <b>FQ</b>	2 1/2 yds
	<b>14982 13</b> 7 52106 78891 6	Blocks <b>FQ</b>	2 1/2 yds
	<b>14983 12</b> 7 52106 78894 7	Blocks <b>FQ</b>	2 1/2 yds
	<b>14983 14</b> 7 52106 78895 4	Blocks <b>FQ</b>	2 1/2 yds
	<b>14984 14</b> 7 52106 78899 2	Blocks <b>FQ</b>	2 1/2 yds
	<b>14985 15</b> 7 52106 78901 2	Blocks <b>FQ</b>	2 1/2 yds
	<b>14986 12</b> 7 52106 78905 0	Blocks <b>FQ</b>	2 1/2 yds
	<b>14987 23</b> 7 52106 78909 8	Blocks <b>FQ</b>	2 1/2 yds
	<b>14989 12</b> 7 52106 78915 9	Blocks <b>FQ</b>	2 1/2 yds
	<b>9900 88</b> 7 52106 20710 3	Blocks <b>FQ</b>	2 1/2 yds
	<b>9900 423</b> 7 52106 54234 1	Blocks <b>FQ</b>	2 1/2 yds
	<b>14985 21</b> 7 52106 78903 6	Background <b>3 3/4 yds</b>	37 1/2 yds
	<b>14987 11</b> 7 52106 78907 4	Backing <b>4 1/4 yds</b>	42 1/2 yds
	<b>14983 14</b> 7 52106 78895 4	Binding <b>5/8 yd</b>	6 1/4 yds





**Nantucket**

Minick & Simpson • 67 1/2" x 67 1/2"

MS 1302

Retail \$12.00



Blue Colorway

Yardage Requirements		1 Quilt	10 Quilts
	<b>12216 25</b> 7 52106 69089 9	Blocks <b>FQ</b>	2 1/2 yds
	<b>14980 19</b> 7 52106 78886 2	Blocks <b>FQ</b>	2 1/2 yds
	<b>14981 18</b> 7 52106 78889 3	Blocks <b>FQ</b>	2 1/2 yds
	<b>14982 18</b> 7 52106 78892 3	Blocks <b>FQ</b>	2 1/2 yds
	<b>14983 16</b> 7 52106 78896 1	Blocks <b>FQ</b>	2 1/2 yds
	<b>14983 18</b> 7 52106 78897 8	Blocks <b>FQ</b>	2 1/2 yds
	<b>14984 19</b> 7 52106 78900 5	Blocks <b>FQ</b>	2 1/2 yds
	<b>14985 19</b> 7 52106 78902 9	Blocks <b>FQ</b>	2 1/2 yds
	<b>14986 11</b> 7 52106 78904 3	Blocks <b>FQ</b>	2 1/2 yds
	<b>14987 16</b> 7 52106 78908 1	Blocks <b>FQ</b>	2 1/2 yds
	<b>14987 26</b> 7 52106 78910 4	Blocks <b>FQ</b>	2 1/2 yds
	<b>14989 16</b> 7 52106 78916 6	Blocks <b>FQ</b>	2 1/2 yds
	<b>14988 11</b> 7 52106 78911 1	Background <b>3 3/4 yds</b>	37 1/2 yds
	<b>14982 11</b> 7 52106 78890 9	Backing <b>4 1/4 yds</b>	42 1/2 yds
	<b>14983 18</b> 7 52106 78897 8	Binding <b>5/8 yd</b>	6 1/4 yds



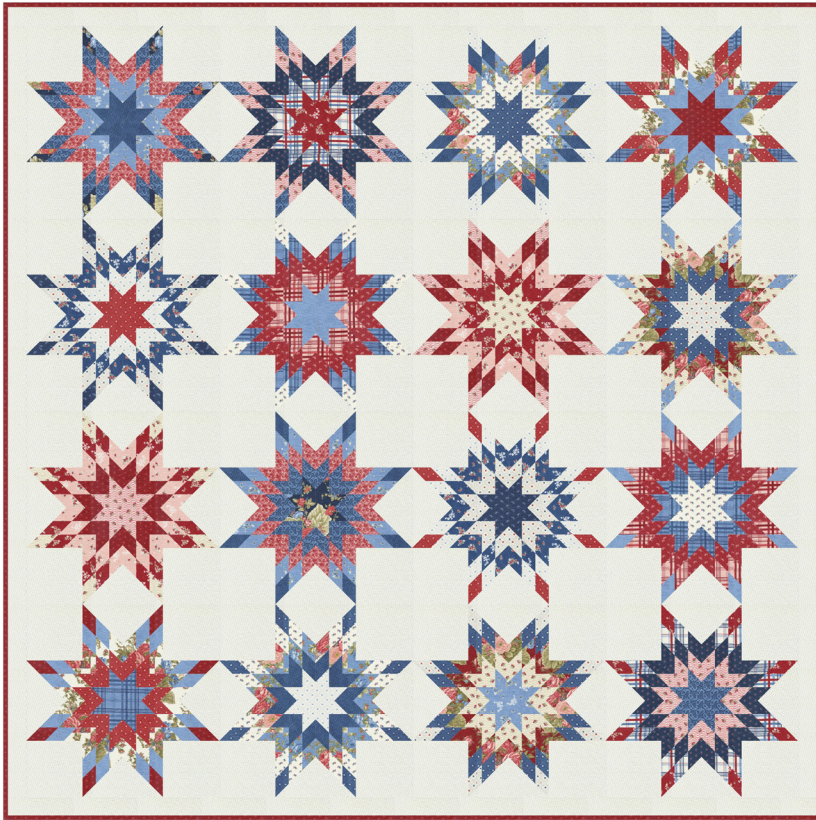


## Ellen's Sewing Basket

Minick & Simpson • 88" x 88"

MS 1201

Retail \$12.00



Light Colorway

Yardage Requirements	1 Quilt	10 Quilts
----------------------	---------	-----------

	<b>14980 11</b> 7 52106 78883 1	Blocks <b>3/8 yd</b>	3 3/4 yds
	<b>14980 15</b> 7 52106 78884 8	Blocks <b>3/8 yd</b>	3 3/4 yds
	<b>14980 16</b> 7 52106 78885 5	Blocks <b>3/8 yd</b>	3 3/4 yds
	<b>14980 19</b> 7 52106 78886 2	Blocks <b>3/8 yd</b>	3 3/4 yds
	<b>14982 11</b> 7 52106 78890 9	Blocks <b>3/8 yd</b>	3 3/4 yds
	<b>14982 13</b> 7 52106 78891 6	Blocks <b>3/8 yd</b>	3 3/4 yds
	<b>14982 18</b> 7 52106 78892 3	Blocks <b>3/8 yd</b>	3 3/4 yds
	<b>14982 26</b> 7 52106 78893 0	Blocks <b>3/8 yd</b>	3 3/4 yds
	<b>14983 12</b> 7 52106 78894 7	Blocks <b>3/8 yd</b>	3 3/4 yds
	<b>14983 14</b> 7 52106 78895 4	Blocks <b>3/8 yd</b>	3 3/4 yds

	<b>14983 16</b> 7 52106 78896 1	Blocks <b>3/8 yd</b>	3 3/4 yds
	<b>14983 18</b> 7 52106 78897 8	Blocks <b>3/8 yd</b>	3 3/4 yds
	<b>14984 11</b> 7 52106 78898 5	Blocks <b>3/8 yd</b>	3 3/4 yds
	<b>14984 14</b> 7 52106 78899 2	Blocks <b>3/8 yd</b>	3 3/4 yds
	<b>14984 19</b> 7 52106 78900 5	Blocks <b>3/8 yd</b>	3 3/4 yds
	<b>14985 15</b> 7 52106 78901 2	Blocks <b>3/8 yd</b>	3 3/4 yds
	<b>14985 19</b> 7 52106 78902 9	Blocks <b>3/8 yd</b>	3 3/4 yds
	<b>14986 12</b> 7 52106 78905 0	Blocks <b>3/8 yd</b>	3 3/4 yds
	<b>14986 18</b> 7 52106 78906 7	Blocks <b>3/8 yd</b>	3 3/4 yds
	<b>14987 11</b> 7 52106 78907 4	Blocks <b>3/8 yd</b>	3 3/4 yds
	<b>14987 23</b> 7 52106 78909 8	Blocks <b>3/8 yd</b>	3 3/4 yds
	<b>14988 16</b> 7 52106 78912 8	Blocks <b>3/8 yd</b>	3 3/4 yds
	<b>14988 18</b> 7 52106 78913 5	Blocks <b>3/8 yd</b>	3 3/4 yds
	<b>14989 11</b> 7 52106 78914 2	Blocks <b>3/8 yd</b>	3 3/4 yds
	<b>14989 12</b> 7 52106 78915 9	Blocks <b>3/8 yd</b>	3 3/4 yds
	<b>14989 16</b> 7 52106 78916 6	Blocks <b>3/8 yd</b>	3 3/4 yds
	<b>14988 11</b> 7 52106 78911 1	Background <b>4 3/4 yds</b>	47 1/2 yds
	<b>14980 15</b> 7 52106 78884 8	Backing <b>8 yds</b>	80 yds
	<b>14985 15</b> 7 52106 78901 2	Binding <b>3/4 yd</b>	7 1/2 yds



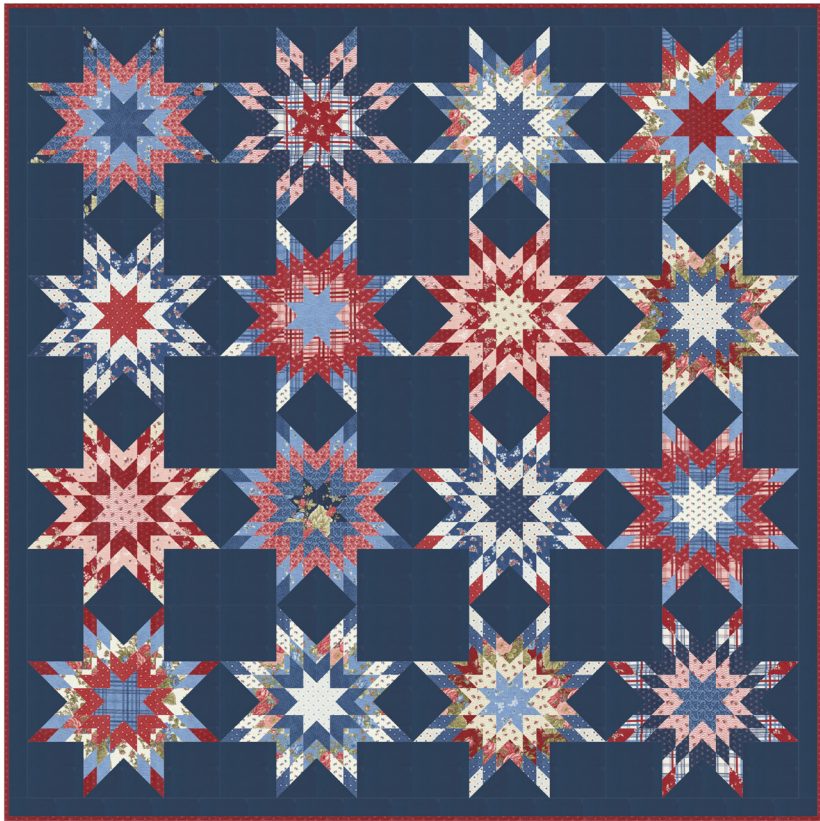


## Ellen's Sewing Basket

Minick & Simpson • 88" x 88"

MS 1201

Retail \$12.00



Dark Colorway

Yardage Requirements	1 Quilt	10 Quilts
----------------------	---------	-----------

	<b>14980 11</b> 7 52106 78883 1	Blocks <b>3/8 yd</b>	3 3/4 yds
	<b>14980 15</b> 7 52106 78884 8	Blocks <b>3/8 yd</b>	3 3/4 yds
	<b>14980 16</b> 7 52106 78885 5	Blocks <b>3/8 yd</b>	3 3/4 yds
	<b>14980 19</b> 7 52106 78886 2	Blocks <b>3/8 yd</b>	3 3/4 yds
	<b>14982 11</b> 7 52106 78890 9	Blocks <b>3/8 yd</b>	3 3/4 yds
	<b>14982 13</b> 7 52106 78891 6	Blocks <b>3/8 yd</b>	3 3/4 yds
	<b>14982 18</b> 7 52106 78892 3	Blocks <b>3/8 yd</b>	3 3/4 yds
	<b>14982 26</b> 7 52106 78893 0	Blocks <b>3/8 yd</b>	3 3/4 yds
	<b>14983 12</b> 7 52106 78894 7	Blocks <b>3/8 yd</b>	3 3/4 yds
	<b>14983 14</b> 7 52106 78895 4	Blocks <b>3/8 yd</b>	3 3/4 yds

	<b>14983 16</b> 7 52106 78896 1	Blocks <b>3/8 yd</b>	3 3/4 yds
	<b>14983 18</b> 7 52106 78897 8	Blocks <b>3/8 yd</b>	3 3/4 yds
	<b>14984 11</b> 7 52106 78898 5	Blocks <b>3/8 yd</b>	3 3/4 yds
	<b>14984 14</b> 7 52106 78899 2	Blocks <b>3/8 yd</b>	3 3/4 yds
	<b>14984 19</b> 7 52106 78900 5	Blocks <b>3/8 yd</b>	3 3/4 yds
	<b>14985 15</b> 7 52106 78901 2	Blocks <b>3/8 yd</b>	3 3/4 yds
	<b>14985 19</b> 7 52106 78902 9	Blocks <b>3/8 yd</b>	3 3/4 yds
	<b>14986 12</b> 7 52106 78905 0	Blocks <b>3/8 yd</b>	3 3/4 yds
	<b>14986 18</b> 7 52106 78906 7	Blocks <b>3/8 yd</b>	3 3/4 yds
	<b>14987 11</b> 7 52106 78907 4	Blocks <b>3/8 yd</b>	3 3/4 yds
	<b>14987 23</b> 7 52106 78909 8	Blocks <b>3/8 yd</b>	3 3/4 yds
	<b>14988 16</b> 7 52106 78912 8	Blocks <b>3/8 yd</b>	3 3/4 yds
	<b>14988 18</b> 7 52106 78913 5	Blocks <b>3/8 yd</b>	3 3/4 yds
	<b>14989 11</b> 7 52106 78914 2	Blocks <b>3/8 yd</b>	3 3/4 yds
	<b>14989 12</b> 7 52106 78915 9	Blocks <b>3/8 yd</b>	3 3/4 yds
	<b>14989 16</b> 7 52106 78916 6	Blocks <b>3/8 yd</b>	3 3/4 yds
	<b>9900 174</b> 7 52106 89544 7	Background <b>4 3/4 yds</b>	47 1/2 yds
	<b>14980 11</b> 7 52106 78883 1	Backing <b>8 yds</b>	80 yds
	<b>14985 15</b> 7 52106 78901 2	Binding <b>3/4 yd</b>	7 1/2 yds





## Circle Game

Minick & Simpson • 16 1/2" x 19"

PS14980

Retail \$4.00



## God Shed His Grace

Designs by Lavender Lime • 74 1/2" x 78 1/2"

DLL 227

Retail \$14.00



### Yardage Requirements

1 Quilt

10 Quilts



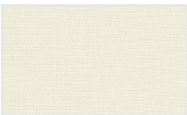
14980MC



Applique

1 MC

10 MCs



9900 182



Background

FQ

2 1/2 yds



12051 16



Borders, backing, binding

2/3 yd

6 2/3 yds

### Yardage Requirements

1 Quilt

10 Quilts



14980JR



Blocks

1 JR

10 JRs



14980 15



Blocks

1/4 yd

2 1/2 yds



14987 16



Blocks

1/4 yd

2 1/2 yds



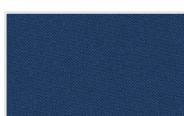
14989 11



Blocks

1/4 yd

2 1/2 yds



9900 236



Blocks, binding

2 yd

20 yds



9900 182



Background

7/8 yd

8 3/4 yds



14982 11



Border 1

2 1/8 yd

21 1/4 yds



14980 16



Backing

5 1/2 yd

55 yds



LS12GH10 Retail \$59.00

Grand Haven Aurifil Thread Box  
10 Small Spools • 100% Cotton  
12wt (54 yds each)







## Liberty Belle

My Wandering Path • 66" x 66"

MWP 212

Retail \$9.95



Yardage Requirements	1 Quilt	10 Quilts
----------------------	---------	-----------

	<b>14980 15</b> 7 52106 78884 8	Blocks <b>F8</b> 1 1/4 yds
	<b>14980 19</b> 7 52106 78886 2	Blocks <b>F8</b> 1 1/4 yds
	<b>14981 12</b> 7 52106 78887 9	Blocks <b>F8</b> 1 1/4 yds
	<b>14982 13</b> 7 52106 78891 6	Blocks <b>F8</b> 1 1/4 yds
	<b>14982 18</b> 7 52106 78892 3	Blocks <b>F8</b> 1 1/4 yds
	<b>14983 12</b> 7 52106 78894 7	Blocks <b>F8</b> 1 1/4 yds
	<b>14983 14</b> 7 52106 78895 4	Blocks <b>F8</b> 1 1/4 yds
	<b>14983 16</b> 7 52106 78896 1	Blocks <b>F8</b> 1 1/4 yds
	<b>14984 14</b> 7 52106 78899 2	Blocks <b>F8</b> 1 1/4 yds
	<b>14984 19</b> 7 52106 78900 5	Blocks <b>F8</b> 1 1/4 yds

	<b>14985 15</b> 7 52106 78901 2	Blocks <b>F8</b> 1 1/4 yds
	<b>14986 11</b> 7 52106 78904 3	Blocks <b>F8</b> 1 1/4 yds
	<b>14986 12</b> 7 52106 78905 0	Blocks <b>F8</b> 1 1/4 yds
	<b>14986 18</b> 7 52106 78906 7	Blocks <b>F8</b> 1 1/4 yds
	<b>14987 23</b> 7 52106 78909 8	Blocks <b>F8</b> 1 1/4 yds
	<b>14987 26</b> 7 52106 78910 4	Blocks <b>F8</b> 1 1/4 yds
	<b>14988 16</b> 7 52106 78912 8	Blocks <b>F8</b> 1 1/4 yds
	<b>14989 16</b> 7 52106 78916 6	Blocks <b>F8</b> 1 1/4 yds
	<b>9900 182</b> 7 52106 92491 8	Background <b>2 yds</b> 20 yds
	<b>14982 26</b> 7 52106 78893 0	Inner border <b>1/2 yd</b> 5 yds
	<b>14980 16</b> 7 52106 78885 5	Outer border <b>1 yd</b> 10 yds
	<b>14989 11</b> 7 52106 78914 2	Backing <b>4 yds</b> 40 yds
	<b>14988 18</b> 7 52106 78913 5	Binding <b>1/2 yd</b> 5 yds