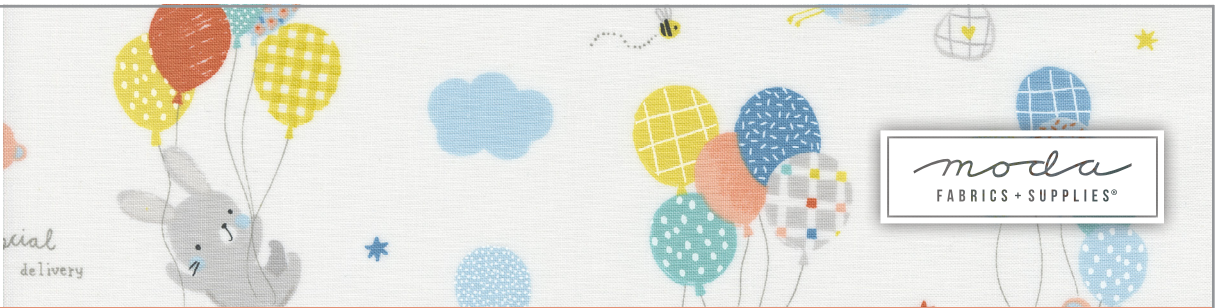


★ delivered with love ★  
by Paper + Cloth

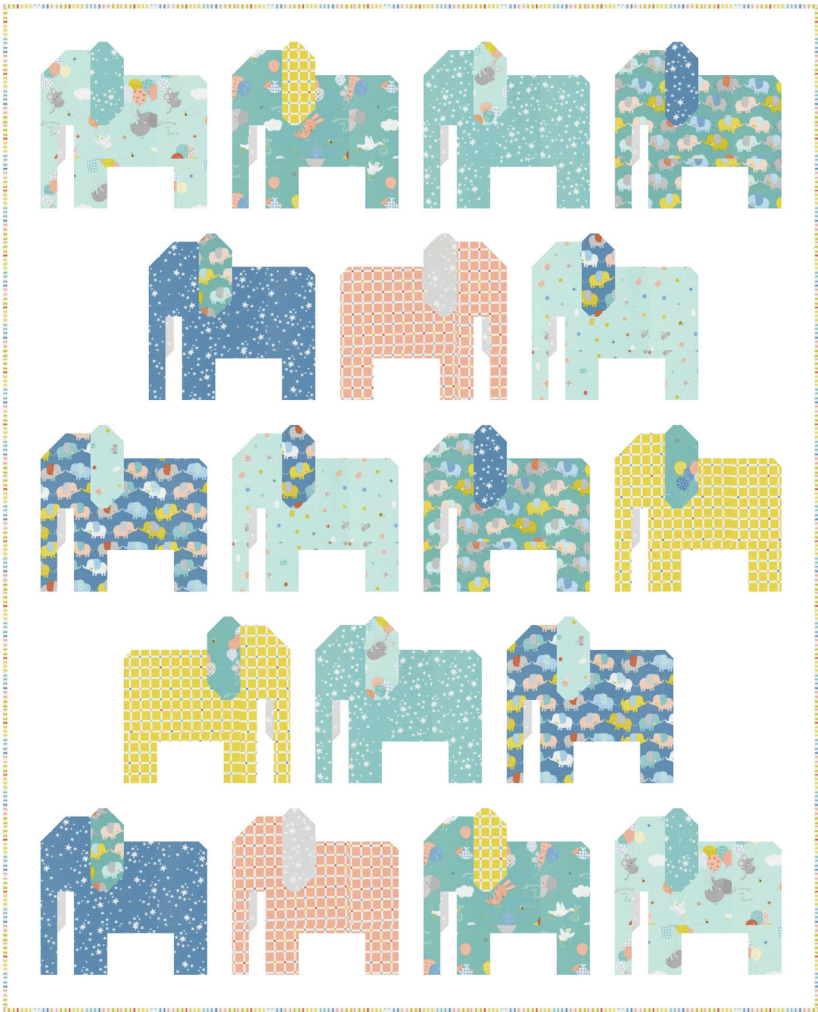


Stomping Ground

Wendy Sheppard • 48 1/2" x 60"

WS14

Retail \$10.00



Yardage Requirements

1 Quilt

10 Quilts



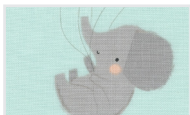
25134 15



blocks

FQ

2 1/2 yds



25130 14



blocks

FQ

2 1/2 yds



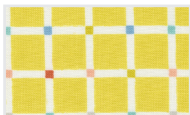
25134 19



blocks

FQ

2 1/2 yds



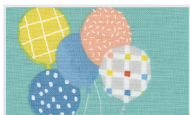
25135 12



blocks

FQ

2 1/2 yds



25130 15



blocks

FQ

2 1/2 yds



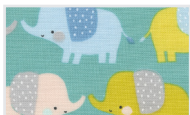
25134 16



blocks

FQ

2 1/2 yds



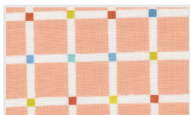
25131 15



blocks

FQ

2 1/2 yds



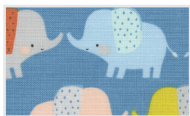
25135 17



blocks

FQ

2 1/2 yds



25131 16



blocks

FQ

2 1/2 yds

Yardage Requirements

1 Quilt

10 Quilts



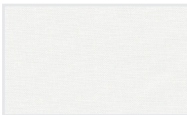
25133 14



blocks

FQ

2 1/2 yds



9900 200



bkgrd, sashing, border

2 1/4 yds

22 1/2 yds



25130 11



backing

3 7/8 yds

38 3/4 yds



25136 11



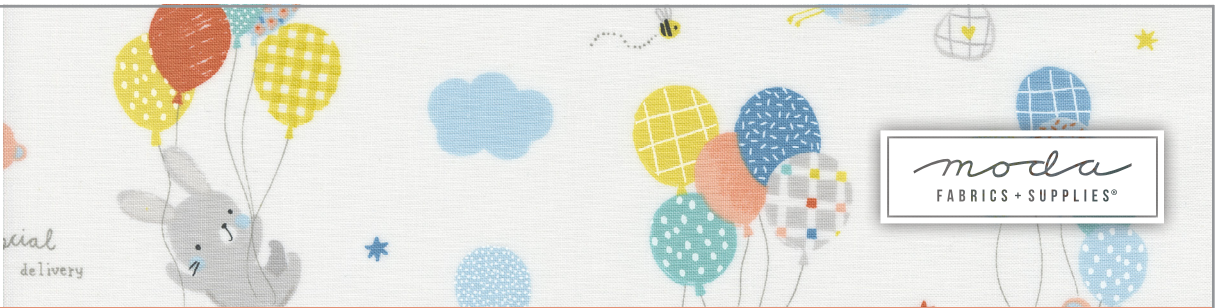
binding

1/2 yd

5 yds



★ delivered with love ★  
by Paper + Cloth



Duckling, Duckling, Go

Wendy Sheppard • 36" x 53"

WS29

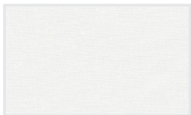
Retail \$11.00



Yardage Requirements

1 Quilt

10 Quilts



9900 200



blocks, sashing

7/8 yd 8 3/4 yds



25132 14



blocks

FQ 2 1/2 yds



25130 11



blocks

FQ 2 1/2 yds



25130 14



blocks

FQ 2 1/2 yds



25134 15



blocks

FQ 2 1/2 yds



25133 11



blocks

FQ 2 1/2 yds

Yardage Requirements

1 Quilt

10 Quilts



25134 17



blocks

FQ 2 1/2 yds



25136 11



blocks

FQ 2 1/2 yds



25134 19



blocks

FQ 2 1/2 yds



25132 11



blocks

FQ 2 1/2 yds

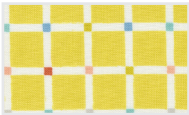


25134 11



blocks

FQ 2 1/2 yds



25135 12



blocks

FQ 2 1/2 yds



25134 12



blocks

1/8 yd 1 1/4 yds



25133 14



sashing

FQ 2 1/2 yds



9900 83



blocks

1/8 yd 1 1/4 yds



9900 169



binding

1/2 yd 5 yds



25130 11



backing

1 7/8 yds 18 3/4 yds