

Dainty Meadow

by Heather Briggs of *My Sew Quilty Life*



Flower Locket

My Sew Quilty Life • 64" x 70"

MSQL 147

Retail \$14.98



Daisy Chain 2

My Sew Quilty Life • 63" x 74"

MSQL 151

Retail \$14.98



Yardage Requirements

	1 Quilt	10 Quilts
31740LC	1 LC	10 LCs
9900 182	3 3/4 yds	37 1/2 yds
31741 17	4 yds	40 yds
31745 17	1 yd	10 yds

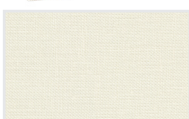


31740LC



Blocks

1 LC 10 LCs



9900 182



Background

3 3/4 yds 37 1/2 yds

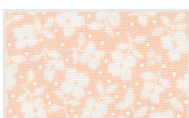


31741 17



Backing

4 yds 40 yds



31745 17



Binding

1 yd 10 yds

Layer Cake friendly quilt. Each block size is 10" x 14 1/2" unfinished. Bias binding. Curved corner template included in pattern.

Yardage Requirements

	1 Quilt	10 Quilts
31743 21	1/2 yd	5 yds
31745 14	1/4 yd	2 1/2 yds
31746 31	1 5/8 yds	16 1/4 yds
31749 11	1/3 yd	3 1/3 yds
31745 17	9 3/8 yds	93 3/4 yds



31743 21



Blocks

1/2 yd 5 yds



31745 14



Blocks

1/4 yd 2 1/2 yds



31746 31



Blocks

1 5/8 yds 16 1/4 yds

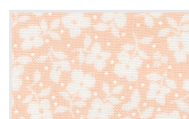


31749 11



Blocks

1/3 yd 3 1/3 yds



31745 17



Bkgd, backing, binding

9 3/8 yds 93 3/4 yds

Pattern has two quilt sizes: crib and throw. Each block size is 10" x 10" unfinished. A second rendition of my most popular pattern, Daisy Chain.

Dainty Meadow

by Heather Briggs of *My Sew Quilty Life*



Flutter & Fly

My Sew Quilty Life • 74" x 74"

MSQL 148

Retail \$14.98



Yardage Requirements	1 Quilt	10 Quilts
----------------------	---------	-----------

	31741 11 7 52106 79336 1	Blocks 1/4 yd 2 1/2 yds
	31742 11 7 52106 79339 2	Blocks 1/4 yd 2 1/2 yds
	31744 11 7 52106 79345 3	Blocks 1/4 yd 2 1/2 yds
	31741 17 7 52106 79337 8	Blocks, sashing diamonds 1/4 yd 2 1/2 yds
	31741 22 7 52106 79338 5	Blocks, sashing diamonds 1/4 yd 2 1/2 yds
	31742 16 7 52106 79340 8	Blocks, sashing diamonds 1/4 yd 2 1/2 yds
	31743 21 7 52106 79343 9	Blocks, sashing diamonds 1/4 yd 2 1/2 yds
	31743 22 7 52106 79344 6	Blocks, sashing diamonds 1/4 yd 2 1/2 yds
	31744 20 7 52106 79346 0	Blocks, sashing diamonds 1/4 yd 2 1/2 yds

	31745 14 7 52106 79351 4	Blocks, sashing diamonds 1/4 yd 2 1/2 yds
	31745 19 7 52106 79353 8	Blocks, sashing diamonds 1/4 yd 2 1/2 yds
	31745 23 7 52106 79355 2	Blocks, sashing diamonds 1/4 yd 2 1/2 yds
	31746 12 7 52106 79357 6	Blocks, sashing diamonds 1/4 yd 2 1/2 yds
	31746 20 7 52106 79359 0	Blocks, sashing diamonds 1/4 yd 2 1/2 yds
	31746 21 7 52106 79360 6	Blocks, sashing diamonds 1/4 yd 2 1/2 yds
	31746 22 7 52106 79361 3	Blocks, sashing diamonds 1/4 yd 2 1/2 yds
	31748 14 7 52106 79365 1	Blocks, sashing diamonds 1/4 yd 2 1/2 yds
	31748 18 7 52106 79366 8	Blocks, sashing diamonds 1/4 yd 2 1/2 yds
	31749 14 7 52106 79370 5	Blocks, sashing diamonds 1/4 yd 2 1/2 yds
	31746 11 7 52106 79356 9	Blocks, sashing 2 yds 20 yds
	31746 31 7 52106 79363 7	Background 2 1/2 yds 25 yds
	31745 17 7 52106 79352 1	Border 1 yd 10 yds
	31740 22 7 52106 79335 4	Backing 4 2/3 yds 46 2/3 yds
	31743 19 7 52106 79342 2	Binding 2/3 yd 6 2/3 yds

The blocks can use either a fat quarter or 1/4 yard. Each block size is 14 1/2" x 14 1/2" unfinished. Included in the pattern is a small butterfly bonus block to use up any scraps from trimming the butterfly wing units.

Dainty Meadow

by Heather Briggs of *My Sew Quilty Life*



Sweet Strawberry

My Sew Quilty Life • 78" x 93"

MSQL 149

Retail \$14.98



Yardage Requirements

	1 Quilt	10 Quilts
--	---------	-----------

	31743 21 7 52106 79343 9	Blocks 1/8 yd	1 1/4 yds
	31745 14 7 52106 79351 4	Blocks 1/8 yd	1 1/4 yds
	31745 20 7 52106 79354 5	Blocks 1/4 yd	2 1/2 yds
	31746 20 7 52106 79359 0	Blocks 1/4 yd	2 1/2 yds
	31746 21 7 52106 79360 6	Blocks 1/8 yd	1 1/4 yds
	31748 20 7 52106 79367 5	Blocks 1/4 yd	2 1/2 yds
	31741 17 7 52106 79337 8	Blocks, border 1/2 yd	5 yds
	31742 16 7 52106 79340 8	Blocks, border 1/2 yd	5 yds
	31743 19 7 52106 79342 2	Blocks, border 1/2 yd	5 yds
	31745 17 7 52106 79352 1	Blocks, border 1/2 yd	5 yds
	31745 19 7 52106 79353 8	Blocks, border 1/2 yd	5 yds
	31746 18 7 52106 79358 3	Blocks, border 1/2 yd	5 yds
	31748 18 7 52106 79366 8	Blocks, border 1/2 yd	5 yds
	31749 16 7 52106 79371 2	Blocks, border 1/2 yd	5 yds
	9900 182 7 52106 92491 8	Background 4 1/4 yds	42 1/2 yds
	31744 20 7 52106 79346 0	Backing 7 1/2 yds	75 yds
	31745 20 7 52106 79354 5	Binding 3/4 yd	7 1/2 yds

Each block size is 12" x 15" unfinished.

Dainty Meadow

by Heather Briggs of *My Sew Quilty Life*



Sew Smitten

My Sew Quilty Life • 56" x 56"

MSQL 150

Retail \$14.98

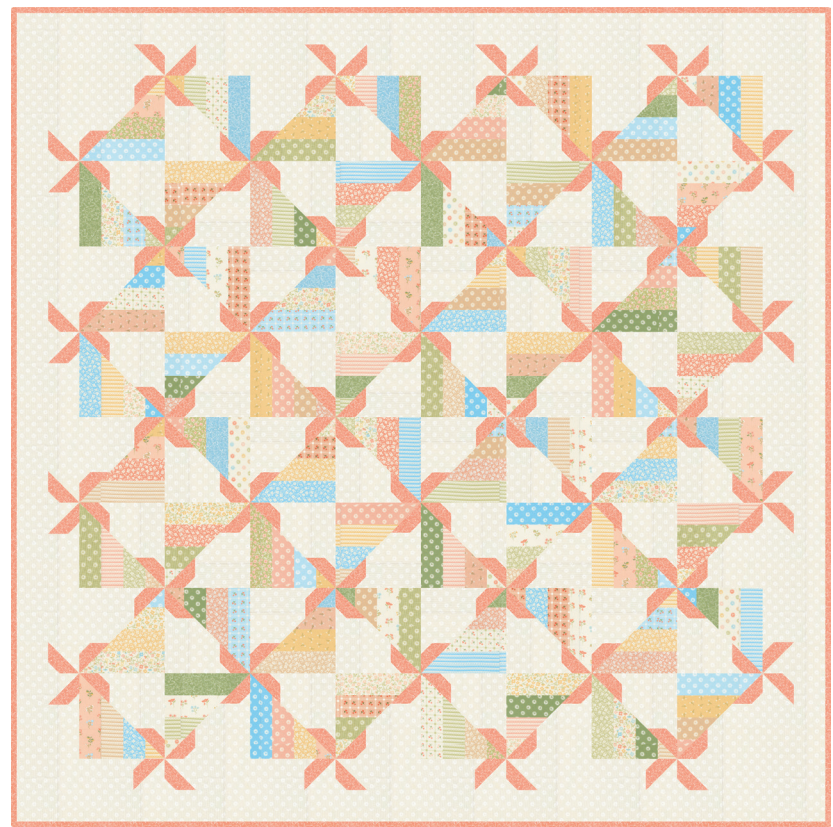


Twirl & Twist

My Sew Quilty Life • 72" x 72"

MSQL 152

Retail \$14.98



Yardage Requirements

1 Quilt

10 Quilts



31740JR



Blocks

1 JR

10 JRs



31746 31



Background

2 1/4 yds

22 1/2 yds



31746 11



Backing

3 3/4 yds

37 1/2 yds



31748 18



Binding

1 yd

10 yds

Bias binding. Curved corner template included in the pattern. The pattern also has a bonus block of a small star to use in place of the heart to make a patriotic Sew Smitten quilt.

Yardage Requirements

1 Quilt

10 Quilts



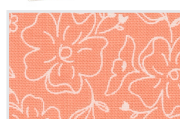
31740LC



Blocks

1 LC

10 LCs



31743 19



Blocks

1 yd

10 yds



31746 31



Background

3 1/4 yds

32 1/2 yds



31744 11



Backing

4 1/2 yds

45 yds



31743 19



Binding

3/4 yd

7 1/2 yds

Each block size is 8" unfinished. Little- to no-waste method of making the blocks.