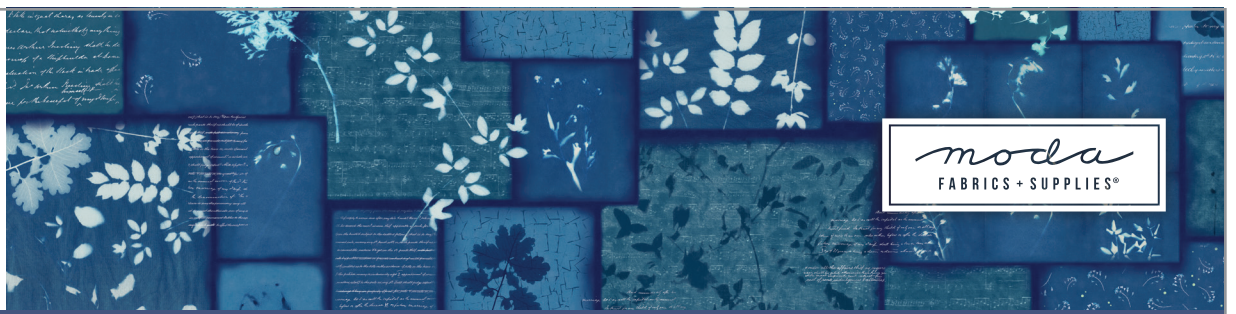


# BLUEBELL

BY JANET CLARE

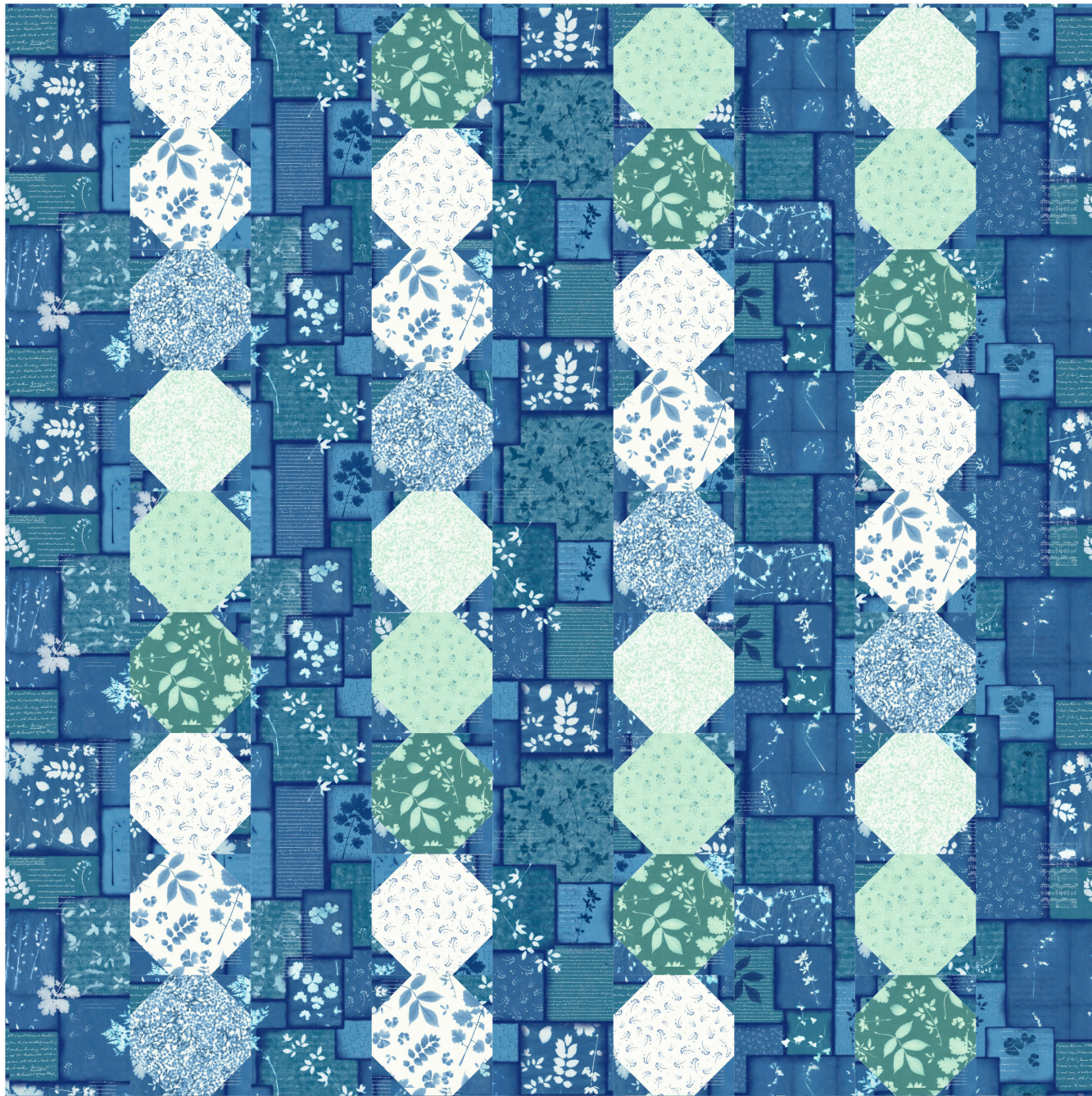


## Flora

Janet Clare • 67 1/2" x 67 1/2"

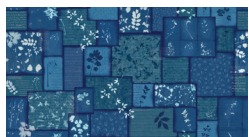
JC 248

Retail \$13.50



Pattern includes bonus project ideas to use leftover half square triangle units from piecing the blocks.

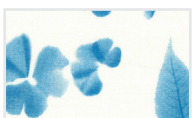
Yardage Requirements	1 Quilt	10 Quilts
----------------------	---------	-----------



**16960 11**



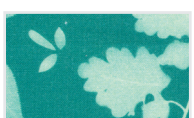
Sashing & piecing blocks  
**3 yds**      30 yds



**16961 11**



Blocks  
**1/2 yd**      5 yds



**16961 15**



Blocks  
**1/2 yd**      5 yds



**16963 11**



Blocks  
**1/2 yd**      5 yds

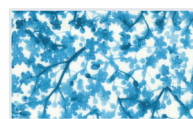


**16963 14**



Blocks  
**1/2 yd**      5 yds

Yardage Requirements	1 Quilt	10 Quilts
----------------------	---------	-----------



**16967 11**



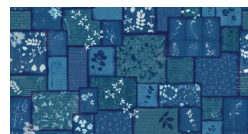
Blocks  
**1/4 yd**      2 1/2 yds



**16967 14**



Blocks  
**1/4 yd**      2 1/2 yds



**16960 11**



Binding  
**1/2 yd**      5 yds



**16965 13**

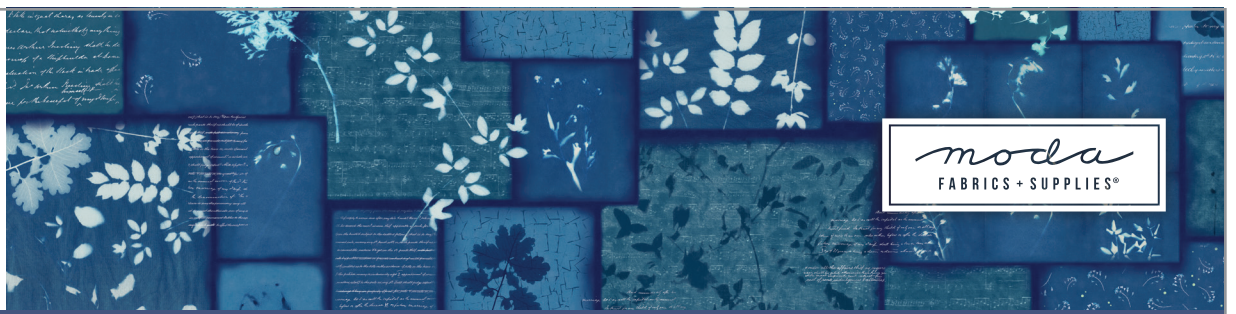


Backing  
**4 1/4 yds**      42 1/2 yds



# BLUEBELL

BY JANET CLARE

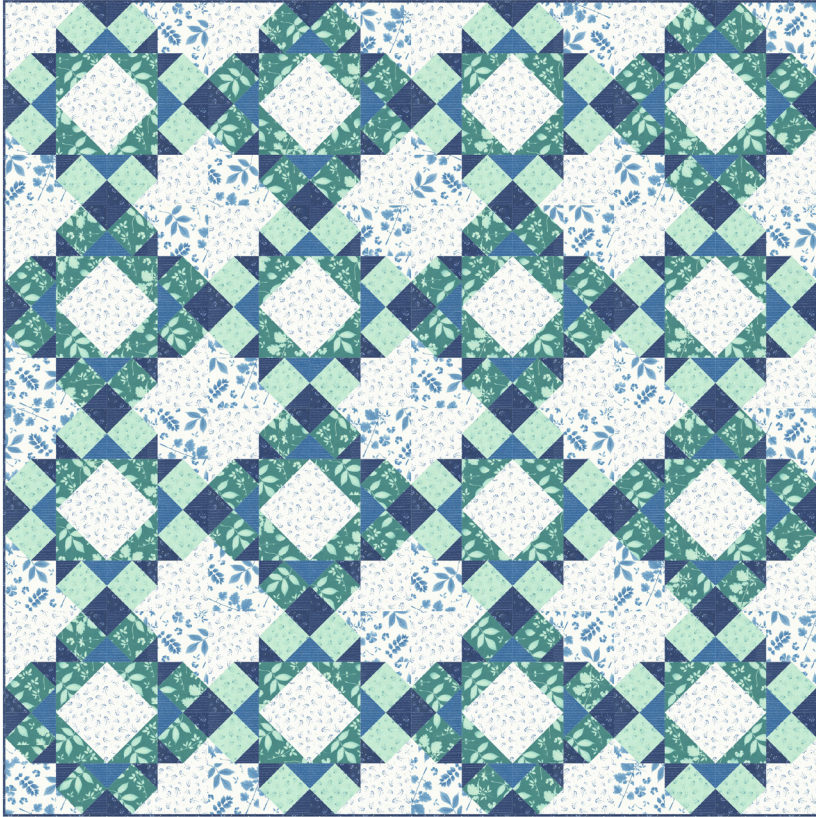


## Fleur

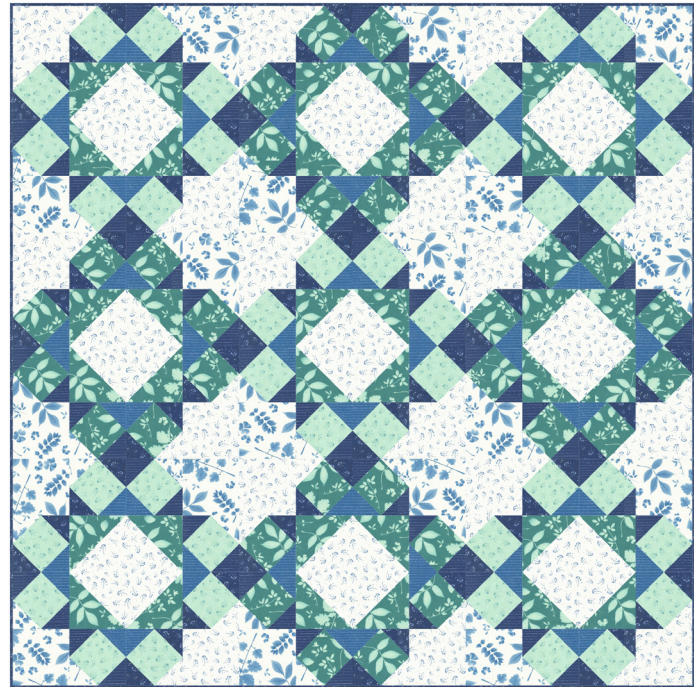
Janet Clare • 2 Sizes

JC 249

Retail \$13.50



80" x 80"



60" x 60"

Yardage Requirements	1 Quilt	10 Quilts
----------------------	---------	-----------

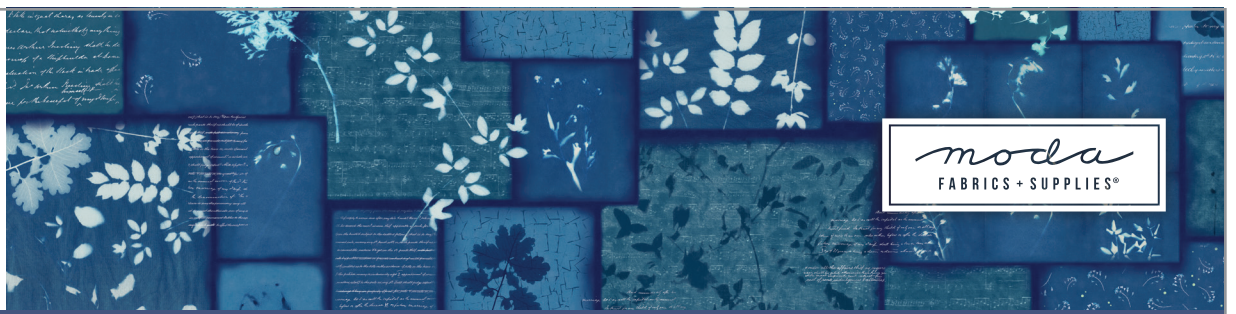
	<b>16961 11</b> Blocks <b>1 1/4 yds</b>	12 1/2 yds
	<b>16961 15</b> Blocks <b>1 3/4 yds</b>	17 1/2 yds
	<b>16963 11</b> Blocks <b>2 yds</b>	20 yds
	<b>16963 12</b> Blocks <b>3/4 yd</b>	7 1/2 yds
	<b>16963 14</b> Blocks <b>1 yd</b>	10 yds
	<b>16965 12</b> Blocks <b>3/4 yd</b>	7 1/2 yds
	<b>16965 13</b> Blocks <b>3/4 yd</b>	7 1/2 yds
	<b>16963 12</b> Binding <b>2/3 yd</b>	6 2/3 yds
	<b>16964 11</b> Backing <b>5 yds</b>	50 yds

Yardage Requirements	1 Quilt	10 Quilts
----------------------	---------	-----------

	<b>16961 11</b> Blocks <b>3/4 yd</b>	7 1/2 yds
	<b>16961 15</b> Blocks <b>1 yd</b>	10 yds
	<b>16963 11</b> Blocks <b>1 1/4 yds</b>	12 1/2 yds
	<b>16963 12</b> Blocks <b>1/2 yd</b>	5 yds
	<b>16963 14</b> Blocks <b>2/3 yd</b>	6 2/3 yds
	<b>16965 12</b> Blocks <b>1/2 yd</b>	5 yds
	<b>16965 13</b> Blocks <b>1/2 yd</b>	5 yds
	<b>16963 12</b> Binding <b>1/2 yd</b>	5 yds
	<b>16964 11</b> Backing <b>4 yds</b>	40 yds



# BLUEBELL BY JANET CLARE



## Petal

Janet Clare • 2 Sizes

JC 247

Retail \$13.50



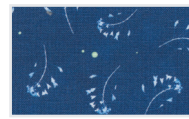
80" x 80"

Pattern includes requirements for two sizes, 60" x 60" and 80" x 80" and is Fat Quarter friendly with each flower made with just one Fat Quarter.

## Yardage Requirements

1 Quilt

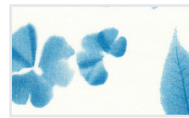
10 Quilts



16963 12



Background  
5 1/2 yds 55 yds



16961 11



Flower Block  
1 FQ 2 1/2 yds



16961 14



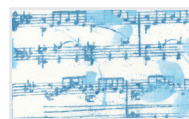
Flower Block  
1 FQ 2 1/2 yds



16961 15



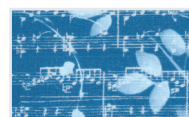
Flower Block  
1 FQ 2 1/2 yds



16962 11



Flower Block  
1 FQ 2 1/2 yds



16962 13



Flower Block  
1 FQ 2 1/2 yds



16963 11



Flower Block  
1 FQ 2 1/2 yds



16963 14



Flower Block  
1 FQ 2 1/2 yds



16964 11



Flower Block  
1 FQ 2 1/2 yds



16964 15



Flower Block  
1 FQ 2 1/2 yds



16965 13



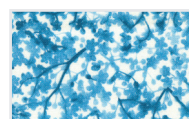
Flower Block  
1 FQ 2 1/2 yds



16965 15



Flower Block  
1 FQ 2 1/2 yds



16967 11



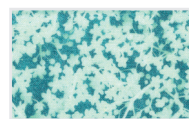
Flower Block  
1 FQ 2 1/2 yds



16967 14



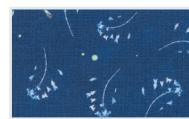
Flower Block  
1 FQ 2 1/2 yds



16967 15



Flower Block  
1 FQ 2 1/2 yds



16963 12



Binding  
2/3 yd 6 2/3 yds



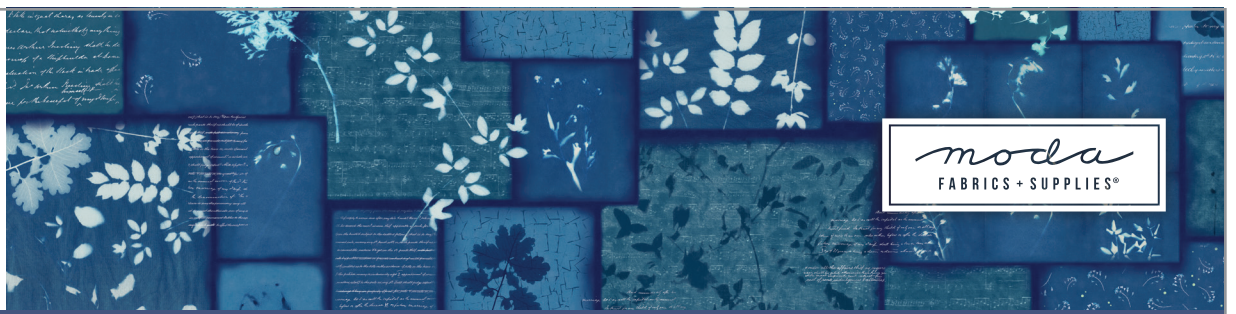
16962 12



Backing  
5 yds 50 yds



# BLUEBELL BY JANET CLARE



moda  
FABRICS + SUPPLIES®

## Petal

Janet Clare • 2 Sizes

JC 247

Retail \$13.50



60" x 60"

Pattern includes requirements for two sizes, 60" x 60" and 80" x 80" and is Fat Quarter friendly with each flower made with just one Fat Quarter.

## Carolina Shag

Branch & Blume • 59" x 75"

BNB 2309

Retail \$12.00



### Yardage Requirements

1 Quilt

10 Quilts

	<b>16963 12</b> 7 52106 75007 4	Background <b>3 1/4 yds</b>	32 1/2 yds
	<b>16961 11</b> 7 52106 74999 3	Flower Block <b>1 FQ</b>	2 1/2 yds
	<b>16962 13</b> 7 52106 75005 0	Flower Block <b>1 FQ</b>	2 1/2 yds
	<b>16963 11</b> 7 52106 75006 7	Flower Block <b>1 FQ</b>	2 1/2 yds
	<b>16963 14</b> 7 52106 75008 1	Flower Block <b>1 FQ</b>	2 1/2 yds
	<b>16964 11</b> 7 52106 75009 8	Flower Block <b>1 FQ</b>	2 1/2 yds
	<b>16965 13</b> 7 52106 75014 2	Flower Block <b>1 FQ</b>	2 1/2 yds
	<b>16965 15</b> 7 52106 75015 9	Flower Block <b>1 FQ</b>	2 1/2 yds
	<b>16967 15</b> 7 52106 75021 0	Flower Block <b>1 FQ</b>	2 1/2 yds
	<b>16963 12</b> 7 52106 75007 4	Binding <b>1/2 yd</b>	5 yds
	<b>16962 12</b> 7 52106 75004 3	Backing <b>4 yds</b>	40 yds

### Yardage Requirements

1 Quilt

10 Quilts

	<b>16960LC</b> 7 52106 74995 5	Blocks <b>1 LC</b>	10 LCs
	<b>9900 200</b> 7 52106 96726 7	Background <b>2 3/4 yds</b>	27 1/2 yds
	<b>16965 12</b> 7 52106 75013 5	Binding <b>5/8 yd</b>	6 1/4 yds
	<b>16961 12</b> 7 52106 75000 5	Backing <b>4 yds</b>	40 yds