

FALL 2022 PRECUTS

FALL 2022 PRECUTS

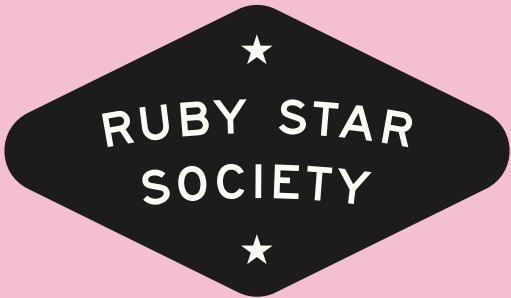
Below are the irresistible precuts we are offering with this release, from adorable mini charms to full bundles.

			
fat quarter bundle	RS3053 FQ (28 skus)  7 52106 71990 3	RS2075 FQ (26 skus)  7 52106 72022 0	RS1056 FQ (27 skus)  7 52106 71953 8
jelly roll™	RS3053 JR (40 pcs)  7 52106 71991 0	RS2075 JR (40 pcs)  7 52106 72023 7	RS1056 JR (40 pcs)  7 52106 71954 5
larger cake™	RS3053 LC (42 pcs)  7 52106 71992 7	RS2075 LC (42 pcs)  7 52106 72024 4	RS1056 LC (42 pcs)  7 52106 71955 2
mini charm	RS3053 MC (42 pcs)  7 52106 71993 4	RS2075 MC (42 pcs)  7 52106 72025 1	RS1056 MC (42 pcs)  7 52106 71956 9
charm pack	RS3053 PP (42 pcs)  7 52106 71994 1	RS2075 PP (42 pcs)  7 52106 72026 8	RS1056 PP (42 pcs)  7 52106 71957 6

MAY
DELIVERY

APRIL
DELIVERY

MAY
DELIVERY



GLAM CLAM QUILT 60" x 72"

MULT 2/ \$6.00

Latifah Saafir

LSS 00006



May



(GLAM CLAM QUILT, SHOWN ABOVE)

10 100

	RS3058 14	binding	5/8	6 1/4
		backing	4 5/8	46 1/4
	RS3053 FQ	piecing	2	20
	RS3053 12	piecing	3/4	7 1/2
	RS3053 14	piecing	3/4	7 1/2
	RS3053 15	piecing	3/4	7 1/2
	RS3054 12	piecing	3/4	7 1/2
	RS3059 16	piecing	3/4	7 1/2

TAMARACK JACKET

MULT 2 / \$10.00

Grainline Studios

GS 16002



May



RS3053 14



RS3053 15



RS3053 12



RS3056 13



RS3056 16



RS3053 14



RS3055 11



HEXIE BAG

Ruby Star Society

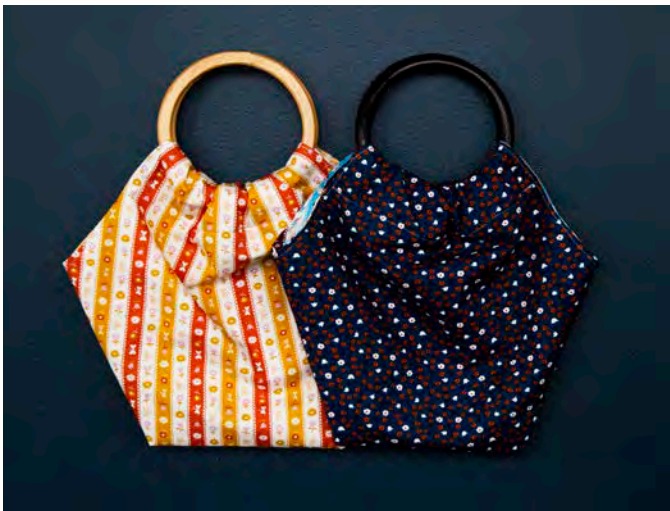
free pattern at modafabrics.com

Bags require 1/2 yd of each fabric listed, plus 1/2 yd lining.

ADDITIONAL SUPPLIES:

2 1/2 yd Interfacing SF101 WHITE (25 YD/\$71.25)

Wooden Circle Handles (wherever you can find them)

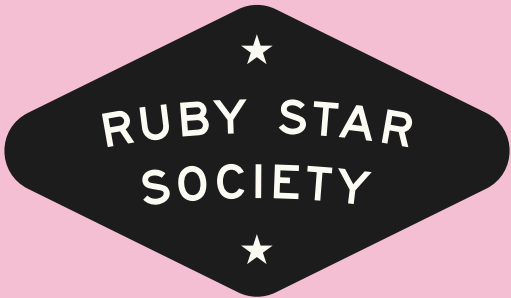


RS3056 11



RS3055 15





APPLE ORCHARD QUILT 66" x 70"

MULT 2/ \$6.00

Pen and Paper

PPP 23



May



(APPLE ORCHARD, SHOWN ABOVE)

1Q 10Q

	RS3056 13	binding	1/2	5
		backing	4 1/2	45
	RS3059 11	background	2 3/4	27 1/2
	RS3058 14	piecing	1/2	5
	RS3059 13	piecing	1/2	5
	RS3055 13	piecing	1 1/3	13 1/3
	RS3059 12	piecing	1/8	1 1/4
	RS3055 15	piecing	1/8	1 1/4
	RS3054 12	piecing	3/4	15

FOLK BLOOMS 56 1/2" x 69"

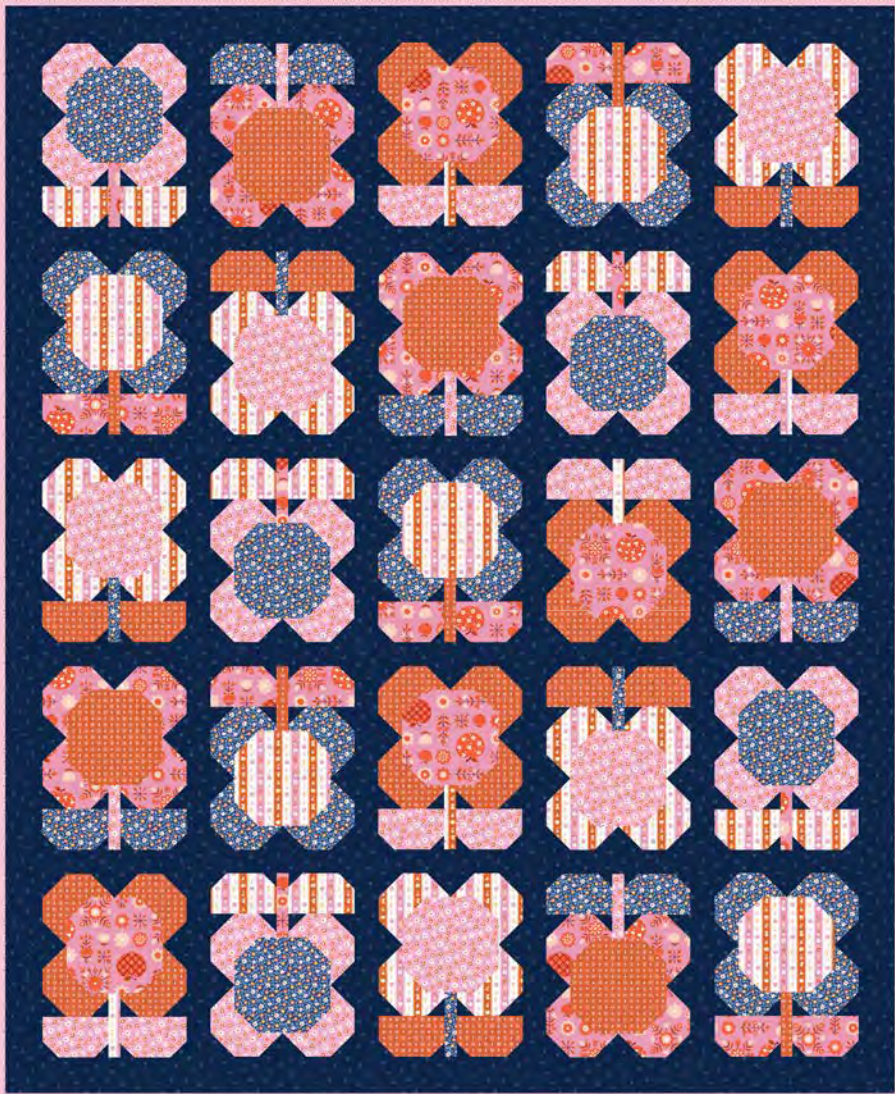
MULT 2/ \$6.00

Pen and Paper

PPP 26



May



(FOLK BLOOMS, SHOWN ABOVE)

1Q 10Q

	RS3053 14	binding	5/8	6 1/4
		backing	3 1/2	35
	RS3059 16	background	2 1/2	25
	RS3053 14	piecing	3/4	7 1/2
	RS3058 11	piecing	3/4	7 1/2
	RS3055 13	piecing	3/4	7 1/2
	RS3056 13	piecing	3/4	7 1/2
	RS3055 15	piecing	3/4	7 1/2

RUBY STAR SOCIETY

reading
nook

BY SARAH WATTS

BOOK NERD 54" x 66"

MULT 2 / \$6.00

Angela Pingel

AP BNIO5



April



(BOOK NERD, SHOWN ABOVE)

1Q 10Q

7 52106 72049 7	RS2081 14	binding	½	5
		backing	4	40
7 52106 72043 5	RS2079 14	background	2¾	27½
7 52106 72022 0	RS2075 FQ	piecing	1	10
7 52106 72027 5	RS2075 11	piecing	¾	3¾
7 52106 72044 2	RS2080 11	piecing	¾	3¾
7 52106 72040 4	RS2079 11	piecing	¾	3¾

CONNIE

Sallie Tomato

LST 125



Bags require 5/8 yd of each fabric listed, plus 5/8 lining.

ADDITIONAL SUPPLIES:

3½ yd 1" Webbing #4032 (6 PCKS/\$14.88)



1 yd Interfacing SF101 WHITE (25 YD/\$71.25)



(2) 1" Ladder Lock Buckle STS197 (MIN 6/\$12)



10" Single Slide Zipper

30" Double Slide Zipper ZIP30 100 (MULT 6/\$3.50)



RS2083 13L

RS2083 15L

RS2083 11L



CAT LADY 72" x 72"

MULT 2 / \$10.00

Ruby Star Society

free pattern at modafabrics.com

April



(CAT LADY, SHOWN ABOVE)

1Q 10Q

7 52106 72049 7	RS2081 14	binding	½	5
		backing	4	40
7 52106 72045 9	RS2080 12	piecing	1½	27½
7 52106 72037 4	RS2078 11	piecing	1¼	10
7 52106 72048 0	RS2081 12	piecing	¾	3¾
7 52106 72031 2	RS2076 11	piecing	1¼	12½
7 52106 72034 3	RS2077 11	piecing	1	10
7 52106 72052 7	RS2082 13	piecing	½	5

TRIANGLE PEAKS 56" x 72"

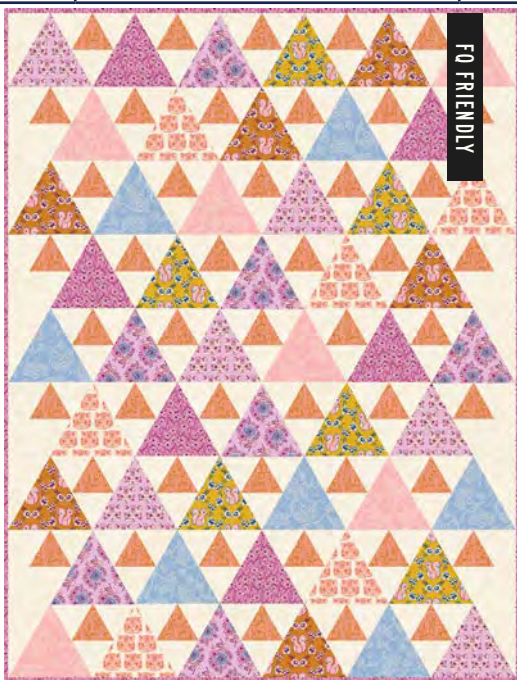
MULT 2 / \$10.00

Quilty Love

QL 121



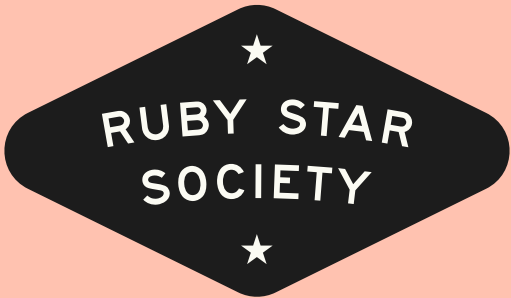
April



(TRIANGLE PEAKS, SHOWN ABOVE)

1Q 10Q

7 52106 72051 0	RS2082 12	binding	⅝	6¼
		backing	3½	35
7 52106 72022 0	RS2075 FQ	prints	1	10
7 52106 72047 3	RS2081 11	accent	½	5
7 52106 72040 4	RS2079 11	background	2¼	22½



STARSHINE 66" x 66"		MULT 2 / \$6.00	
Modernly Morgan	MM 008		May



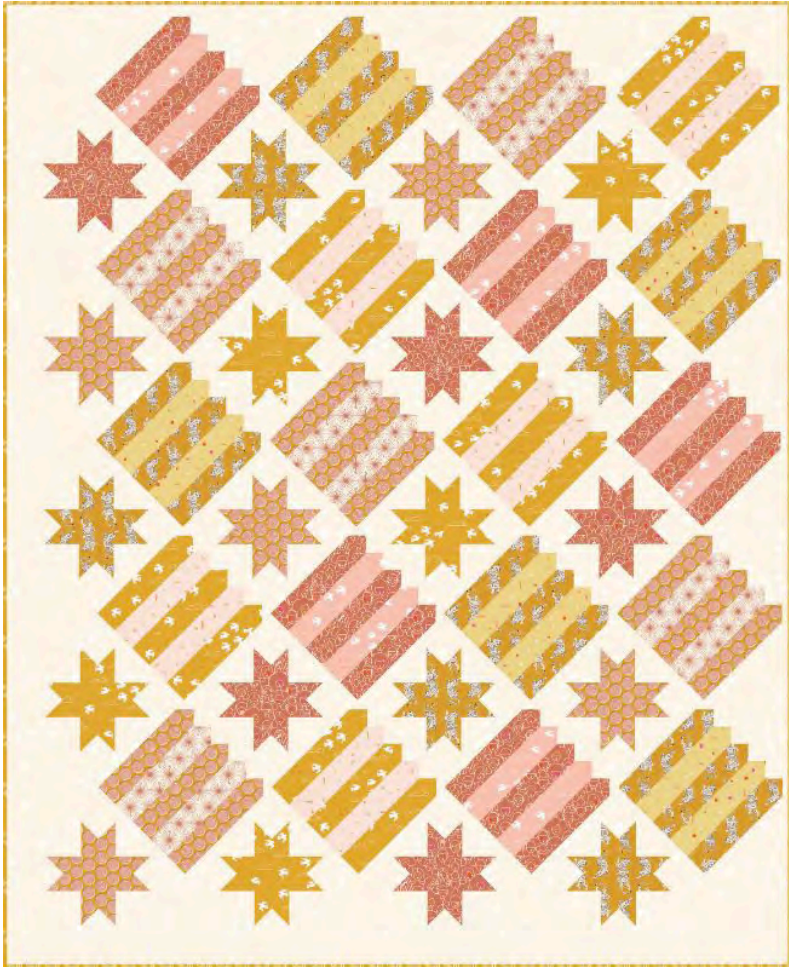
(STARSHINE, SHOWN ABOVE)		1Q	10Q
	binding	2/3	6 2/3
	backing	4 1/4	42 1/2
	RS1063 11 background	3 1/4	32 1/2
	RS1056 FQ prints	1	10

MATCHA TOP	
Sew Liberated	SL N126
Need 2 1/2 yds	
ADDITIONAL SUPPLIES:	
1/4 yd Interfacing SF101WHITE (25 YD / \$71.25)	

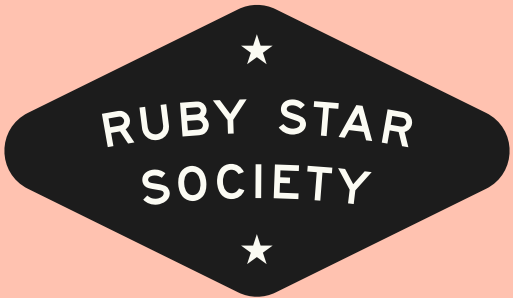


RS1056 11

PICKET STARS " x"		MULT 2 / \$10.00	
Everyday Stitches	ES 532PKT		May



(PICKET STARS, SHOWN ABOVE)		1Q	10Q
	RS1058 12 background	4 1/2	45
	RS1062 14 piecing	3/4	7 1/2
	RS1057 15 piecing	3/4	7 1/2
	RS1056 14 piecing	3/4	7 1/2
	RS1058 13 piecing	3/4	7 1/2
	RS1063 16 piecing	3/8	3 3/4
	RS1060 15 piecing	3/8	3 3/4
	RS1058 14 piecing	3/8	3 3/4
	RS1060 13 piecing	3/8	3 3/4



LONE STAR 58" x 58"MULT 2/ \$6.00

QuiltsmartQS 200087 52106 64856 2May

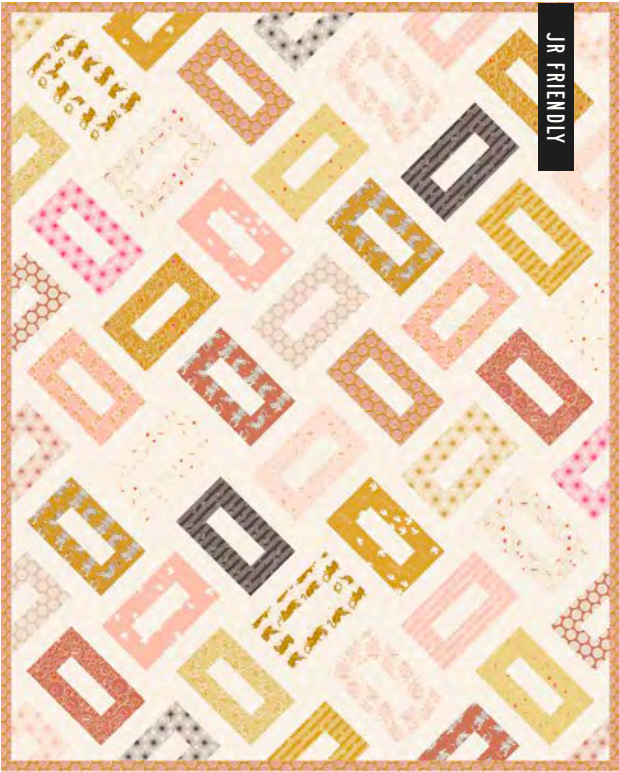


FO FRIENDLY

(LONE STAR, SHOWN ABOVE)			1Q	10Q
7 52106 71960 6	RS1056 14	binding	2/3	2/3
		backing		
7 52106 71964 4	RS1058 12	background		
7 52106 71953 8	RS1056 FQ	prints	1	10

ORLA 56" x 72"MULT 2 / \$10.00

Kitchen Table QuiltKTQ 1636 45239 96794 8May

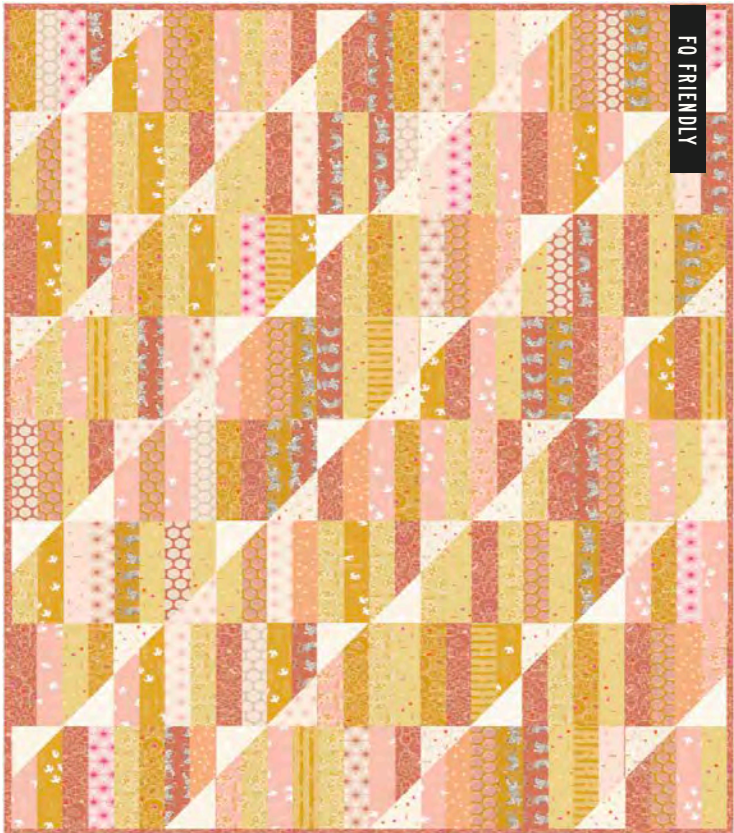


JR FRIENDLY

(ORLA, SHOWN ABOVE)			1Q	10Q
7 52106 71979 8	RS1063 11	background	2 1/8	21 1/4
		backing	3 5/8	36 1/4
7 52106 71976 7	RS1062 14	binding	5/8	6 1/4
7 52106 71954 5	RS1056 JR	prints	1	10

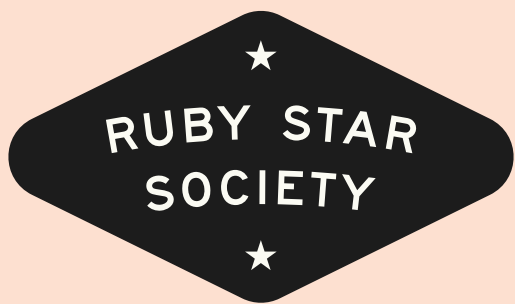
HAPPY STRIPES 64" x 72"MULT 2/ \$6.00

Quilty LoveQL 1446 02309 23676 2May



FO FRIENDLY

(HAPPY STRIPES, SHOWN ABOVE)			1Q	10Q
7 52106 71960 6	RS1056 14	binding	5/8	6 1/4
		backing	4	40
7 52106 71953 8	RS1056 FQ	prints	1	10



★ OFFICIAL ★
**RUBY STAR
SOCIETY**
GUARANTEED
DELIGHTFUL GOODS

BAGS + IRONING BOARD COVERS



NOTION TO RISE
IRONING BOARD COVER
by Ruby Star Society
100% COTTON SIZE: 15" x 54"
#: RS965 14 MIN: 2
7 52106 53561 9



AFRICAN DAISY KNITTING BAG
by Jen Hewett
100% COTTON SIZE: 12" X 13"
#:RS7006 MULT: 6
7 52106 64263 8



NOTIONS SNACK BOX
by Sarah Watts
#: RS TIN 64 MULT: 6
7.75" X 6" X 2.75"
7 52106 64274 4



MOONGLOW SEWING
IRONING BOARD COVER
by Alexia Marcelle Abegg
100% COTTON SIZE: 20" x 50"
#: RS7007 MIN: 2
7 52106 64264 5

SOCKS

One Size Fits Most, Cotton Blend.
OCTOBER DELIVERY



STRAWBERRY
by Kimberly Kight
#: RS SOCKS 59 MIN: 3
7 52106 70706 1



NOTION TO RISE
by Ruby Star Society
#: RS SOCKS 51 MIN: 3
7 52106 47789 6



STARRY
by Alexia Marcelle Abegg
#: RS SOCKS 57 MIN: 3
7 52106 70704 7



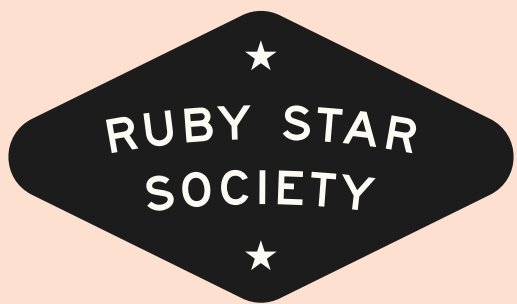
TANGRAMS
by Rashida Coleman-Hale
#: RS SOCKS 53 MIN: 3
7 52106 49042 0



PRESSER FOOT
by Sarah Watts
#: RS SOCKS 58 MIN: 3
7 52106 70705 4

Yardages provided at the time of printing may change. Please consult the printed pattern before cutting kits.

moda
FABRICS + SUPPLIES



★ OFFICIAL ★
**RUBY STAR
SOCIETY**
GUARANTEED
DELIGHTFUL GOODS

NOTECARDS

These sewing & quilting themed notecards come in boxed sets with 6 each of 2 designs, plus envelopes. Blank inside.

OCTOBER DELIVERY



SEW THOUGHTFUL
BOX OF 12 BLANK NOTECARDS
by Rashida Coleman-Hale
SIZE: 3"x5.5" # : RS 7046 MIN: 6



JEN HEWETT
BOX OF 12 BLANK NOTECARDS
by Jen Hewett
SIZE: 3"x5.5" # : RS 7047 MIN: 6



ENAMEL ZIPPER PULLS

Two of each designer's favorite designs have been made into gold and enamel treasures. Pulls come on card backing in sets as shown, with lobster claw clasps.

OCTOBER DELIVERY



ALEXIA ZIPPER PULLS
2 COUNT ON BACKING CARD
: RS 7042 MULT: 3



MELODY ZIPPER PULLS
2 COUNT ON BACKING CARD
: RS 7038 MULT: 3



RASHIDA ZIPPER PULLS
2 COUNT ON BACKING CARD
: RS 7039 MULT: 3



SARAH ZIPPER PULLS
2 COUNT ON BACKING CARD
: RS 7040 MULT: 3



KIMBERLY ZIPPER PULLS
2 COUNT ON BACKING CARD
: RS 7041 MULT: 3



NOTEBOOKS

Interior pages are a combination of grid, lined, and dot grid patterns.

Large 80 pages/small 48 pages.

OCTOBER DELIVERY



HONEY
SMALL THREE-NOTEBOOK SET
by Alexia Marcelle Abegg
SIZE: 3.5"x5.5"
: RS 7043 MIN: 6



DAYDREAM
LARGE TWO-NOTEBOOK SET
by Melody Miller
SIZE: 5.5"x8.5"
: RS 7045 MIN: 6



BELOVED ANIMALS
LARGE TWO-NOTEBOOK SET
by Sarah Watts
SIZE: 5.5"x8.5"
: RS 7044 MIN: 6



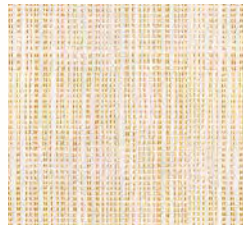
Yardages provided at the time of printing may change. Please consult the printed pattern before cutting kits.

moda
FABRICS + SUPPLIES

RUBY STAR SOCIETY

warp & weft
malo & mett
ALEXIA MARCELLE ABEGG

CHORE COAT | GOLD



RS4008 15



JUBILEE | SHELL



RS4011 16



FLICKER | PINK



RS4012 13



PARADE | NAVY



RS4010 11



JUBILEE | SPRINKLES



RS4011 11



FLICKER | LILAC



RS4012 11



PARADE | PERSIMMON



RS4010 12



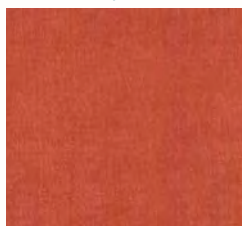
FLICKER | PERSIMMON



RS4012 14



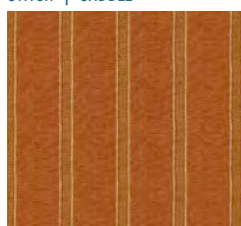
CROSS WEAVE | PERSIMMON



RS4015 13



STITCH | SADDLE



RS4009 12



MATINEE | EARTH



RS4013 11



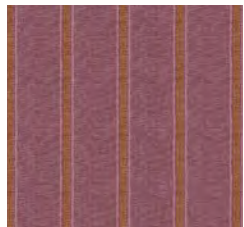
PARADE | LAVENDER



RS4010 13



STITCH | LILAC



RS4009 11



CROSS WEAVE | WINE TIME



RS4015 11



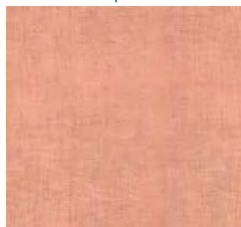
FLICKER | NAVY



RS4012 12



CROSS WEAVE | DAHLIA



RS4015 16



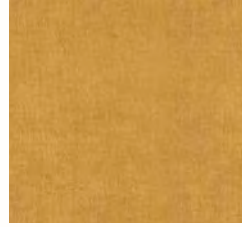
MATINEE | DAHLIA



RS4013 12



CROSS WEAVE | CACTUS



RS4015 14



WORKSHOP TWILL | BLACK



RS4067 11



CROSS WEAVE | GOLDENROD



RS4015 20



CROSS WEAVE | TERRACOTTA



RS4015 25



CROSS WEAVE | WARM RED



RS4015 22



CROSS WEAVE | BLACK



RS4015 23



WORKSHOP TWILL | BLUE RIBBON



RS4067 12



FLICKER | CARAMEL



RS4012 17



HOLIDAY | PINK



RS4065 11



FLICKER | DUSK



RS4012 18



MATINEE | DUSK



RS4013 14



WORKSHOP TWILL | SADDLE



RS4067 14



WORKSHOP | PINE



RS4067 13



COTTON | BLACK



RS4008 16



COTTON | BLUE RIBBON



RS4008 17



STRIPE | SUNSET



RS4068 11



Yardages provided at the time of printing may change. Please consult the printed pattern before cutting kits.

malo & mett
FABRICS + SUPPLIES