



AVAILABLE NOW

MIXED BASICS COLORWAY



My Favorite Color is Still Moda by Moda  
MOD 138 • 81" x 81" • Retail \$15.00



Yardage Requirements

1 Quilt

10 Quilts



**1660 29**  
7 52106 42845 4

Spotted  
**3/8 yd**

3 3/4 yds



**1660 74**  
7 52106 48350 7

Backgrounds

**4 2/3 yds**

46 2/3 yds



**8654 155**  
7 52106 35478 4

Essential Dots

**3/8 yd**

3 3/4 yds



**9900 216**  
7 52106 96742 7

Bella

**3/8 yd**

3 3/4 yds



**9900 388**  
7 52106 44687 8

Bella

**3/8 yd**

3 3/4 yds



**9900 418**  
7 52106 54229 7

Bella

**3/8 yd**

3 3/4 yds



**9900 442**  
7 52106 77445 2

Bella

**3/8 yd**

3 3/4 yds



**20488 76**  
7 52106 74627 5

Eyelet

**3/8 yd**

3 3/4 yds



**20488 85**  
7 52106 74632 9

Eyelet

**3/8 yd**

3 3/4 yds

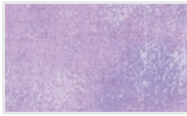


**30150 101**  
7 52106 03174 6

Grunge Basics

**2 yds**

20 yds



**30150 292**  
7 52106 23548 9

Grunge

**3/8 yd**

3 3/4 yds



**30150 338**  
7 52106 30461 1

Grunge

**3/8 yd**

3 3/4 yds

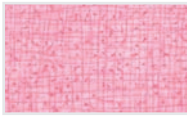


**30150 365**  
7 52106 34090 9

Grunge

**3/8 yd**

3 3/4 yds



**48626 37**  
7 52106 45958 8

Thatched

**3/8 yd**

3 3/4 yds



**48626 61**  
7 52106 51122 4

Thatched

**3/8 yd**

3 3/4 yds



**48626 62**  
7 52106 51123 1

Thatched

**3/8 yd**

3 3/4 yds



**48626 179**  
7 52106 60741 5

Thatched

**3/8 yd**

3 3/4 yds



**48626 214**  
7 52106 80066 3

Thatched

**3/8 yd**

3 3/4 yds



**RS 4109 42**  
7 52106 77491 9

Starry

**3/8 yd**

3 3/4 yds



**RS 4109 47**  
7 52106 77495 7

Starry

**3/8 yd**

3 3/4 yds



**RS 4110 21**  
7 52106 77505 3

Starry

**3/8 yd**

3 3/4 yds



**RS 5027 92M**  
7 52106 60868 9

Speckled

**3/8 yd**

3 3/4 yds





AVAILABLE NOW

RUBY STAR SOCIETY BASICS COLORWAY



My Favorite Color is Still Moda by Moda  
MOD 138 • 81" x 81" • Retail \$15.00



Yardage Requirements

1 Quilt

10 Quilts



**RS 4109 36**  
7 52106 77488 9

Starry  
**3/8 yd**

3 3/4 yds



**RS 4109 41**  
7 52106 77490 2

Starry  
**3/8 yd**

3 3/4 yds



**RS 4109 43**  
7 52106 77492 6

Starry  
**3/8 yd**

3 3/4 yds



**RS 4109 44**  
7 52106 77493 3

Starry  
**3/8 yd**

3 3/4 yds



**RS 4109 50M**  
7 52106 77496 4

Starry  
**3/8 yd**

3 3/4 yds



**RS 4109 53**  
7 52106 77498 8

Starry  
**3/8 yd**

3 3/4 yds



**RS 4109 54**  
7 52106 77499 5

Starry  
**3/8 yd**

3 3/4 yds



**RS 4109 57**  
7 52106 77500 8

Starry  
**3/8 yd**

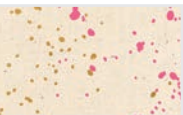
3 3/4 yds



**RS 4110 20**  
7 52106 77504 6

Starry  
**3/8 yd**

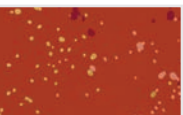
3 3/4 yds



**RS 5027 16M**  
7 52106 50290 1

Speckled  
**3/8 yd**

3 3/4 yds



**RS 5027 64M**  
7 52106 50311 3

Background and  
Binding

**4 2/3 yds**

46 2/3 yds



**RS 5027 91M**  
7 52106 60867 2

Background

**2 yds**

20 yds



**RS 5027 101M**  
7 52106 60875 7

Speckled

**3/8 yd**

3 3/4 yds



**RS 5027 102**  
7 52106 60876 4

Speckled

**3/8 yd**

3 3/4 yds



**RS 5027 113**  
7 52106 79015 5

Speckled

**3/8 yd**

3 3/4 yds



**RS 5027 114**  
7 52106 79016 2

Speckled

**3/8 yd**

3 3/4 yds



**RS 5027 116**  
7 52106 79018 6

Speckled

**3/8 yd**

3 3/4 yds



**RS 5027 118**  
7 52106 79019 3

Speckled

**3/8 yd**

3 3/4 yds



**RS 5027 120**  
7 52106 79020 9

Speckled

**3/8 yd**

3 3/4 yds



**RS 5027 124M**  
7 52106 79023 0

Speckled

**3/8 yd**

3 3/4 yds



**RS 5027 127M**  
7 52106 79025 4

Speckled

**3/8 yd**

3 3/4 yds



**RS 5027 135**  
7 52106 79031 5

Speckled

**3/8 yd**

3 3/4 yds





AVAILABLE NOW

JOYFUL BELLAS COLORWAY



My Favorite Color is Still Moda by Moda  
MOD 138 • 81" x 81" • Retail \$15.00



Yardage Requirements		1 Quilt	10 Quilts			
	<b>9900 14</b> 	Background And Binding <b>4 2/3 yds</b>	46 2/3 yds		<b>9900 166</b> 	Blocks <b>3/8 yd</b> 3 3/4 yds
	<b>9900 16</b> 	Blocks <b>3/8 yd</b>	3 3/4 yds		<b>9900 169</b> 	Blocks <b>3/8 yd</b> 3 3/4 yds
	<b>9900 18</b> 	Blocks <b>3/8 yd</b>	3 3/4 yds		<b>9900 190</b> 	Blocks <b>3/8 yd</b> 3 3/4 yds
	<b>9900 30</b> 	Blocks <b>3/8 yd</b>	3 3/4 yds		<b>9900 200</b> 	Blocks <b>3/8 yd</b> 3 3/4 yds
	<b>9900 47</b> 	Blocks <b>3/8 yd</b>	3 3/4 yds		<b>9900 200</b> 	Background <b>2 yds</b> 20 yds
	<b>9900 65</b> 	Blocks <b>3/8 yd</b>	3 3/4 yds		<b>9900 216</b> 	Blocks <b>3/8 yd</b> 3 3/4 yds
	<b>9900 77</b> 	Blocks <b>3/8 yd</b>	3 3/4 yds		<b>9900 223</b> 	Blocks <b>3/8 yd</b> 3 3/4 yds
	<b>9900 113</b> 	Blocks <b>3/8 yd</b>	3 3/4 yds		<b>9900 248</b> 	Blocks <b>3/8 yd</b> 3 3/4 yds
	<b>9900 120</b> 	Blocks <b>3/8 yd</b>	3 3/4 yds		<b>9900 258</b> 	Blocks <b>3/8 yd</b> 3 3/4 yds
	<b>9900 121</b> 	Blocks <b>3/8 yd</b>	3 3/4 yds		<b>9900 299</b> 	Blocks <b>3/8 yd</b> 3 3/4 yds
	<b>9900 123</b> 	Blocks <b>3/8 yd</b>	3 3/4 yds			
	<b>9900 132</b> 	Blocks <b>3/8 yd</b>	3 3/4 yds			





AVAILABLE NOW

WARM & COZY BELLAS - LIGHT VERSION



My Favorite Color is Still Moda by Moda  
MOD 138 • 81" x 81" • Retail \$15.00



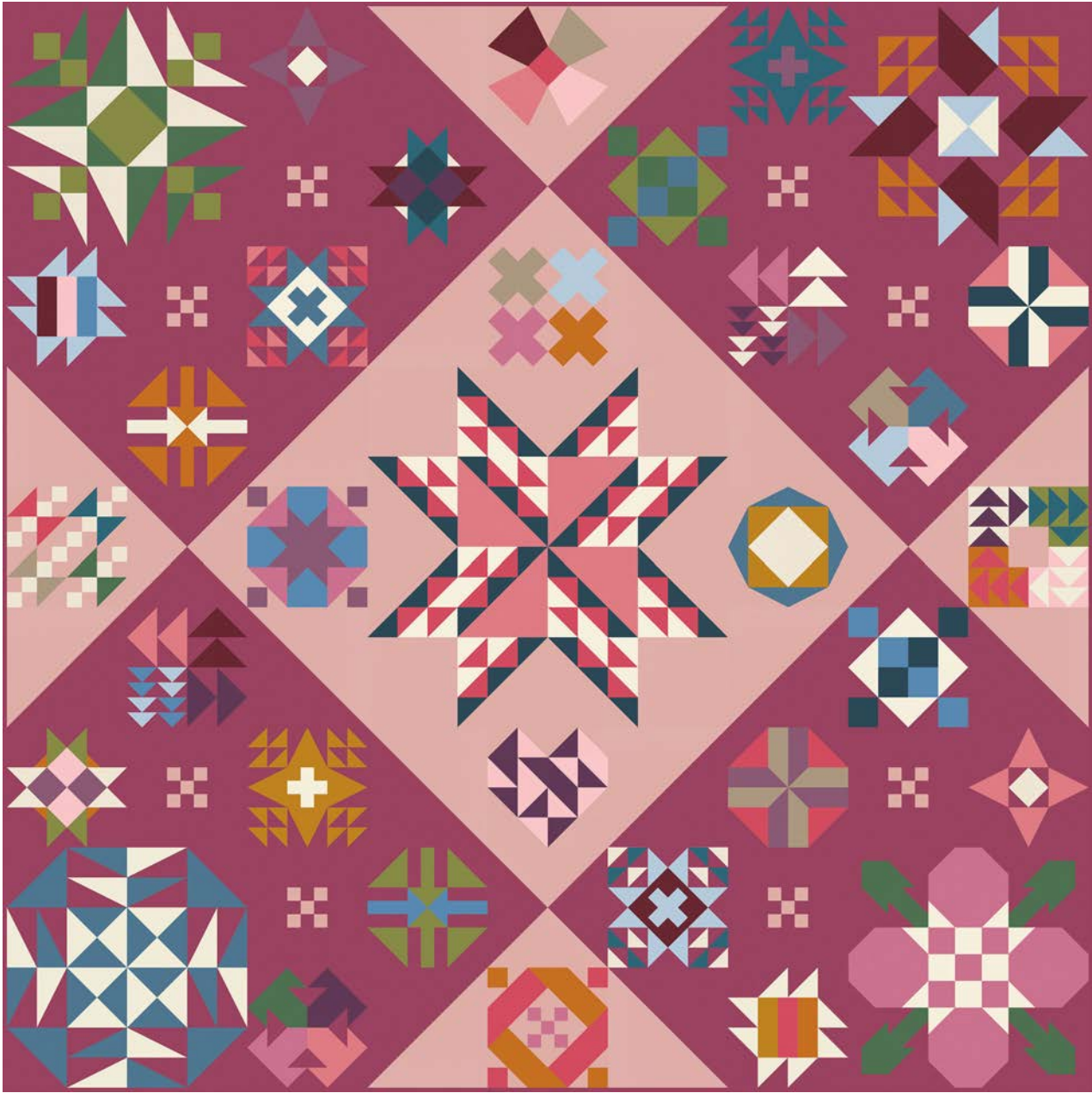
Yardage Requirements		1 Quilt	10 Quilts			
	<b>9900 13</b> 	Backgrounds <b>4 2/3 yds</b>	46 2/3 yds		<b>9900 454</b> 	Blocks <b>3/8 yd</b> 3 3/4 yds
	<b>9900 37</b> 	Blocks <b>3/8 yd</b>	3 3/4 yds		<b>9900 455</b> 	Blocks <b>3/8 yd</b> 3 3/4 yds
	<b>9900 60</b> 	* Need Both <b>3/8 yd</b>	3 3/4 yds		<b>9900 456</b> 	Blocks <b>3/8 yd</b> 3 3/4 yds
	<b>9900 60</b> 	Backgrounds <b>2 yds</b>	20 yds		<b>9900 457</b> 	Blocks <b>3/8 yd</b> 3 3/4 yds
	<b>9900 177</b> 	Blocks <b>3/8 yd</b>	3 3/4 yds		<b>9900 458</b> 	Blocks <b>3/8 yd</b> 3 3/4 yds
	<b>9900 204</b> 	Blocks <b>3/8 yd</b>	3 3/4 yds		<b>9900 461</b> 	Blocks <b>3/8 yd</b> 3 3/4 yds
	<b>9900 210</b> 	Blocks <b>3/8 yd</b>	3 3/4 yds		<b>9900 462</b> 	Blocks <b>3/8 yd</b> 3 3/4 yds
	<b>9900 425</b> 	Blocks <b>3/8 yd</b>	3 3/4 yds		<b>9900 463</b> 	Blocks <b>3/8 yd</b> 3 3/4 yds
	<b>9900 426</b> 	Blocks <b>3/8 yd</b>	3 3/4 yds		<b>9900 464</b> 	Blocks <b>3/8 yd</b> 3 3/4 yds
	<b>9900 450</b> 	Blocks <b>3/8 yd</b>	3 3/4 yds		<b>9900 466</b> 	Blocks <b>3/8 yd</b> 3 3/4 yds
	<b>9900 452</b> 	Blocks <b>3/8 yd</b>	3 3/4 yds			
	<b>9900 453</b> 	Blocks <b>3/8 yd</b>	3 3/4 yds			





AVAILABLE NOW

WARM & COZY BELLAS - DARK VERSION



**My Favorite Color is Still Moda** by Moda  
MOD 138 • 81" x 81" • Retail \$15.00



Yardage Requirements

**9900 18**  
7 52106 56984 3

**9900 145**  
7 52106 77568 8

**9900 195**  
7 52106 93019 3

**9900 204**  
7 52106 96730 4

**9900 205**  
7 52106 96731 1

**9900 210**  
7 52106 96736 6

**9900 425**  
7 52106 54236 5

**9900 452**  
7 52106 77455 1

**9900 453**  
7 52106 77456 8

**9900 454**  
7 52106 77457 5

**9900 455**  
7 52106 77458 2

**9900 458**  
7 52106 77461 2

1 Quilt

Blocks

**3/8 yd**

Blocks

**3/8 yd**

Backgrounds

**2 yds**

Blocks

**3/8 yd**

Blocks

**3/8 yd**

Blocks

**3/8 yd**

Blocks

**3/8 yd**

Blocks

**3/8 yd**

Background And  
Binding

**4 3/8 yds**

Blocks

**3/8 yd**

Blocks

**3/8 yd**

Blocks

**3/8 yd**

10 Quilts

3 3/4 yds

3 3/4 yds

20 yds

3 3/4 yds

3 3/4 yds

3 3/4 yds

3 3/4 yds

3 3/4 yds

43 3/4 yds

3 3/4 yds

3 3/4 yds

3 3/4 yds

**9900 459**  
7 52106 77462 9

**9900 460**  
7 52106 77463 6

**9900 461**  
7 52106 77464 3

**9900 462**  
7 52106 77465 0

**9900 463**  
7 52106 77466 7

**9900 464**  
7 52106 77467 4

**9900 466**  
7 52106 77469 8

**9900 285**  
7 52106 17149 7

Blocks

**3/8 yd**

Blocks

**3/8 yd**

Blocks

**3/8 yd**

Blocks

**3/8 yd**

Blocks

**3/8 yd**

Blocks

**3/8 yd**

Blocks

**3/8 yd**

Used In 3 Places

**1 yd**

3 3/4 yds

3 3/4 yds

3 3/4 yds

3 3/4 yds

3 3/4 yds

3 3/4 yds

3 3/4 yds

10 yds

\*The three LOW VOLUME fabrics have been combined into one SKU in this colorway, instead of having all different 'white' Bellas. There will be additional cutting instructions in the pattern for this.