

PS30750

# GATHER AROUND

FINISHED SIZE 19½" x 53½"



Featuring Sunday Brunch by BASICGREY

*moda*  
FABRICS + SUPPLIES®

© 2024 moda fabrics • all rights reserved





## CUTTING INSTRUCTIONS

WOF = Width of Fabric (approx. 42")

### FROM THE SPRITZER GRUNGE:

Cut (2) 2½" x WOF strips. From strips, cut:

- (3) 2½" x 21" strips for blocks

Cut (4) 1½" x WOF strips for borders

### FROM THE PARFAIT GRUNGE:

Cut (2) 2⅝" x WOF strips. From strips, cut:

- (20) 2⅝" squares for blocks
- (4) 1½" squares for borders

### FROM THE VANILLA GRUNGE:

Cut (1) 2" x WOF strip. From strip, cut:

- (20) 2" squares for blocks

Cut (4) 2½" x WOF strips. From strips, cut:

- (32) 2½" squares for blocks
- (3) 2½" x 21" strips for blocks

Cut (1) 3½" x WOF strip. From strip, cut:

- (5) 3½" squares for blocks

Cut (1) 4½" x WOF strip. From strip, cut:

- (5) 4½" squares for blocks

### FROM THE SCRAMBLER SPRITZER PRINT:

Cut (1) 9¾" x WOF strip. From strip, cut:

- (3) 9¾" squares, cut in half diagonally twice for side setting triangles
- (2) 5⅛" squares, cut in half diagonally once for corner setting triangles

### FROM THE SHORT STACK MINT TEA PRINT:

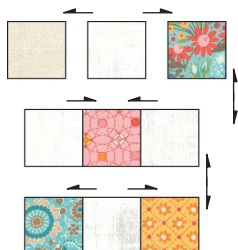
Cut (4) 2¼" x WOF strips for binding

## PIECING INSTRUCTIONS

Refer to pressing arrows throughout pattern.

### MAKE PRINT/BACKGROUND NINE-PATCH BLOCKS

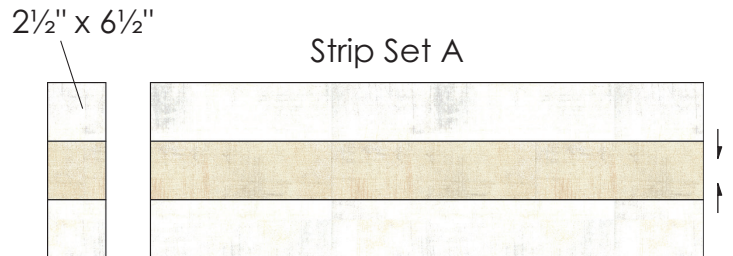
1. Lay out (5) mini charm squares and (4) 2½" Vanilla Grunge background squares. Sew together as shown to make a Nine-Patch block. Make 8, assorted.



Make 8, assorted.

### MAKE GRUNGE NINE-PATCH BLOCKS

2. Gather (2) 2½" x 21" Vanilla Grunge strips and (1) 2½" x 21" Spritzer Grunge strip. As shown, join strips and press to make Strip Set A measuring 6½" x 21". Cut strip set into (8) 2½" x 6½" A segments.



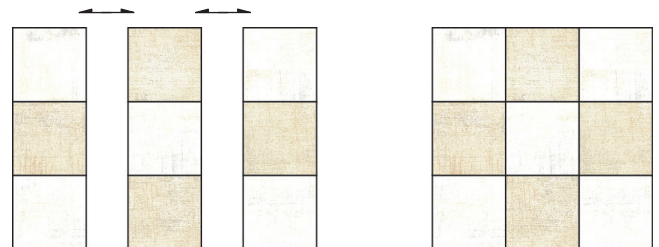
Cut 8.

3. Make a Strip Set B in the same way using (2) 2½" x 21" Spritzer Grunge strips and (1) 2½" x 21" Vanilla Grunge strip. Press as shown. Cut strip set into (4) 2½" x 6½" B segments.



Cut 4.

4. Gather (2) A segments and (1) B segment. Sew together and press to make a Nine-Patch block measuring 6½" square. Make 4.



Make 4.



## PIECING INSTRUCTIONS (con't.)

## MAKE SAWTOOTH STAR BLOCKS

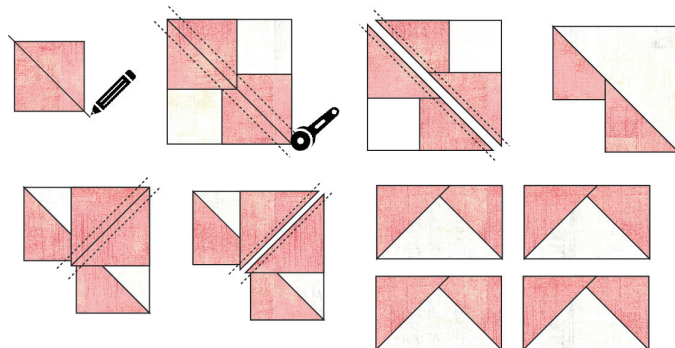
5. Gather (1) 4½" Vanilla Grunge square and (4) 2⅝" Parfait Grunge squares. Use the four-at-a-time/no-waste method to make (4) Flying Geese units. Trim to 2" x 3½". Make (20) Flying Geese units, total.



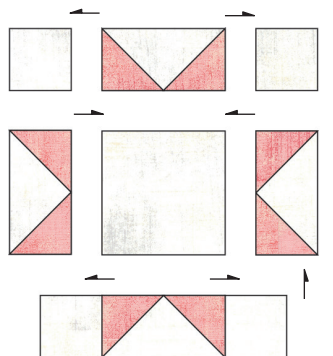
Use this QR code for a step-by-step video on how to make four-at-a-time Flying Geese units.



6. Lay out and sew together (4) Flying Geese units, (4) 2" Vanilla Grunge squares, and (1) 3½" Vanilla Grunge square as shown. Press and trim to 6½" square to make the Sawtooth Star block. Make 5.



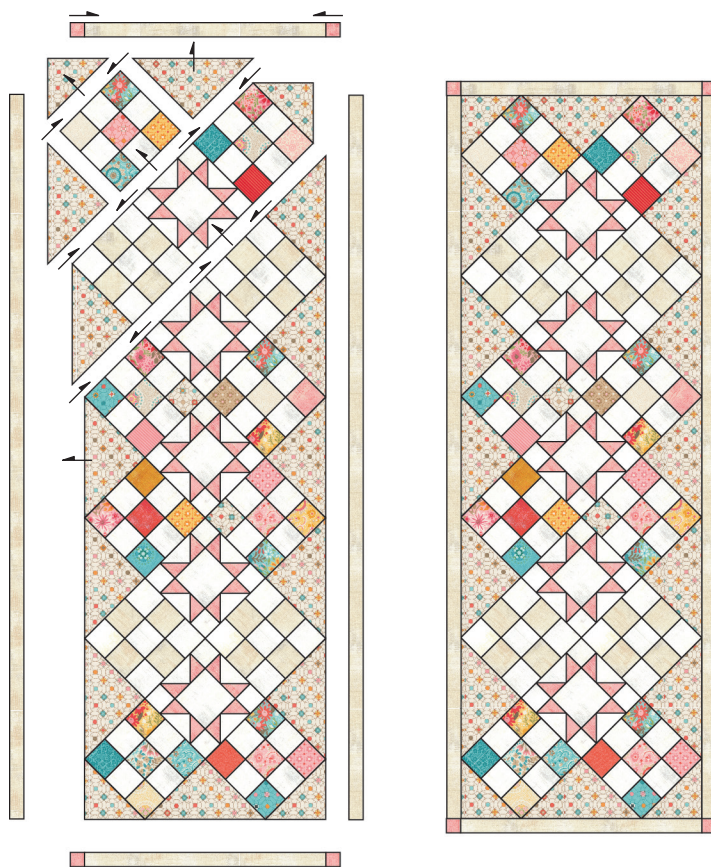
Make 20, total.



Make 5.

## ASSEMBLY AND FINISHING INSTRUCTIONS

7. Lay out the (12) Nine-Patch blocks, the (5) Sawtooth Star blocks, the (12) side-setting triangles, and the (4) corner-setting triangles as shown. Sew the blocks and setting triangles together into diagonal rows. Sew the rows together to make the table runner center.
8. Sew the 1½" Spritzer Grunge border strips together end to end to create one long strip. From strip, subcut (2) 1½" x 51½" strips and (2) 1½" x 17½" strips.
9. Sew (2) 1½" Parfait Grunge squares to the ends of each 1½" x 17½" border strip that now measures 1½" x 19½" each.
10. Join the long border strips to the long sides of the table runner, and join the shorter, pieced border strips to the top and bottom edges.
11. Layer, baste, quilt, and bind as desired using the Short Stack Mint Tea strips. Finished, quilted table runner measures 19½" x 53½". Enjoy!







# moda GATHER AROUND

FINISHED SIZE 19½" x 53½"

Featuring SUNDAY BRUNCH by BASICGREY

© 2024 moda fabrics • all rights reserved

## FABRIC REQUIREMENTS

1 SUNDAY BRUNCH MINI CHARM PACK



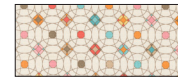
30750MC

⅝ YARD - VANILLA GRUNGE  
BACKGROUND



30150 91

⅜ YARD - SCRAMBLER SPRITZER  
SETTING TRIANGLES



30753 11

⅜ YARD - SPRITZER GRUNGE  
NINE-PATCH BLOCKS AND BORDER



30150 583

⅓ YARD - SHORT STACK MINT TEA  
BINDING



30757 13

¼ YARD - PARFAIT GRUNGE  
SAWTOOTH STARS AND BORDER CORNERS



30150 588

1 ½ YARDS - DUTCH BABY SPRITZER  
BACKING



30750 11

25" x 59" BATTING PIECE

moda  
FABRICS + SUPPLIES®