

★ OFFICIAL ★
RUBY STAR
SOCIETY
PATTERN CO.

CAT LADY QUILT

project sheet



FABRIC BY SARAH WATTS
INSTRUCTIONS BY ALEXIA MARCELLE ABEGG

CUTTING INSTRUCTIONS



RS2080-12

cut (14) 5½" x 5½"
cut (2) 5½" x 10½"
cut (2) 10½" x 10½"
cut (6) 4½" x 5½"
cut (2) 6" x 9½"
cut (6) 3½" x 5½"
cut (4) 5½" x 7½"
cut (2) 2" x 10½"
cut (4) 2½" x 3½"



RS2081-12

cut (4) 6" x 1½"
cut (16) 5½" x 1½"
cut (8) yarn balls



RS2078-11

cut (16) 5½" x 5½"
cut (2) 10½" x 10½"
cut (2) 4½" x 5½"
cut (2) 6" x 9½"
cut (2) 2" x 10½"
cut (4) 5½" x 10½"



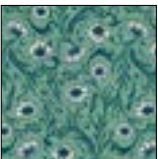
RS2076-11

cut (14) 5½" x 5½"
cut (6) 4½" x 5½"
cut (2) 10½" x 10½"
cut (4) 5½" x 7½"



RS2077-11

cut (8) 5½" x 5½"
cut (2) 10½" x 10½"
cut (2) 4½" x 5½"
cut (6) 2½" x 3½"
cut (2) 3½" x 5½"



RS2082-13

cut (2) 7" x WOF
strips for piecing
cats



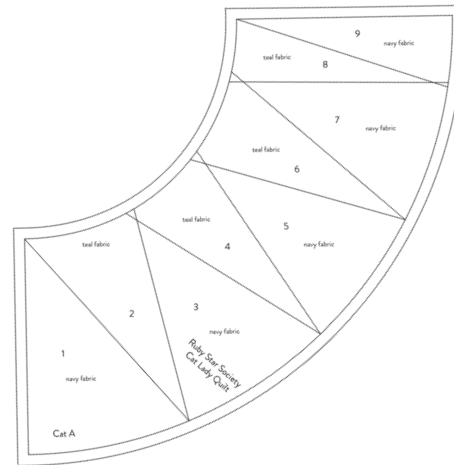
RS0005-37M

cut (8) tails
(four with fabric right side
up, four with fabric right
side down)
cut (16) 2" x 3½"
cut (16) ears
(eight with fabric right
side up, eight with fabric
right side down)
cut (8) cat heads
(four with fabric right side
up, four with fabric right
side down)
cut (7) 7" x WOF strips for
piecing cats

PIECING INSTRUCTIONS

Using the templates provided, begin by foundation piecing the cat bodies. All seam allowances are ¼" unless otherwise indicated.

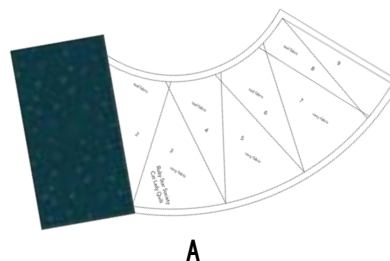
1. Start with the cat body foundation piecing template. Print at 100% on either standard printer paper or paper piecing stock. Because the cats curve either to the right or left based on their placement on the quilt top, you will need two copies of Cat Body Template A and two copies of Template B. Illustrations below show Template A only.



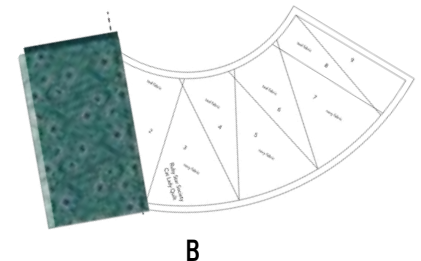
TIP:

When foundation piecing, shorten your stitch length to 1 or 1.5mm to make it easier to remove paper backing after sewing. Complete sewing ALL seams prior to removing paper to provide support during the construction process.

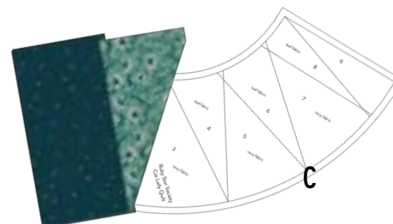
2. From the navy WOF strip, cut a piece measuring approximately 7" x 4" and place it right side up on the segment labeled "navy fabric: 1" on the UNPRINTED side of the paper. Use a glue stick to anchor this piece in place. The raw edge of the fabric must completely cover both the seam allowance along the outer edge of the template (indicated by the outer ¼" boundary line) and the line between segment 1 and segment 2 with a ¼" seam allowance (figure A).



A

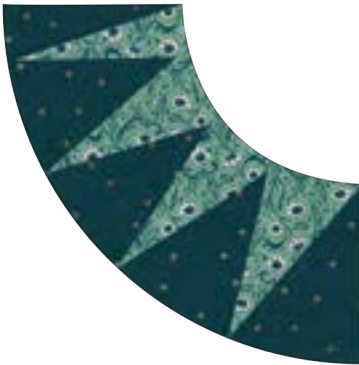


B



C

3. From the pink WOF strip, cut a piece measuring approximately 7" x 4" and place it right sides together with the navy, matching the raw edges along the boundary between segments 1 and 2. From the PRINTED side of the paper, stitch through ALL LAYERS on top of the line between segments 1 and 2 (diagram B). Flip the paper over, and press the pink fabric TOWARD segment 2, making sure it completely covers the shape indicated on the paper. For best results, trim any excess fabric that falls outside of segment 2, leaving enough to allow a ¼" seam allowance between segments 2 and 3 (diagram C).



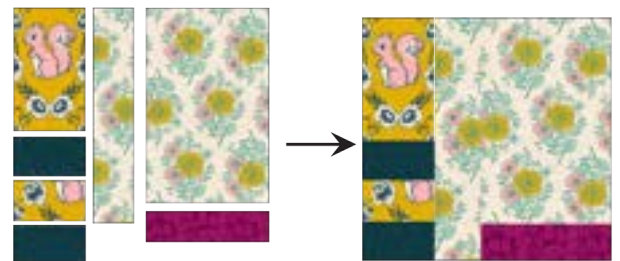
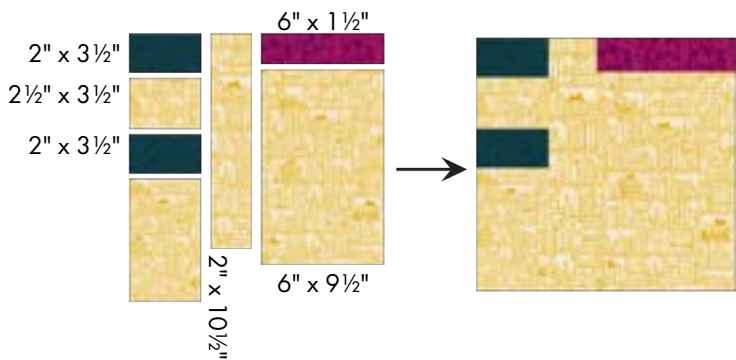
4. Repeat steps B & C for the remaining segments of the template. Take care to cover each segment completely. Holding the paper to a light source may help you see the printed lines from the unprinted side of the paper, ensuring proper placement. When all segments have been sewn, trim along the outer boundary line. Repeat until you have TWO each of Template A and Template B. Carefully remove the paper piecing papers, and turn under ¼" to the wrong side along both curved edges of the pieced sections.

SEWING INSTRUCTIONS

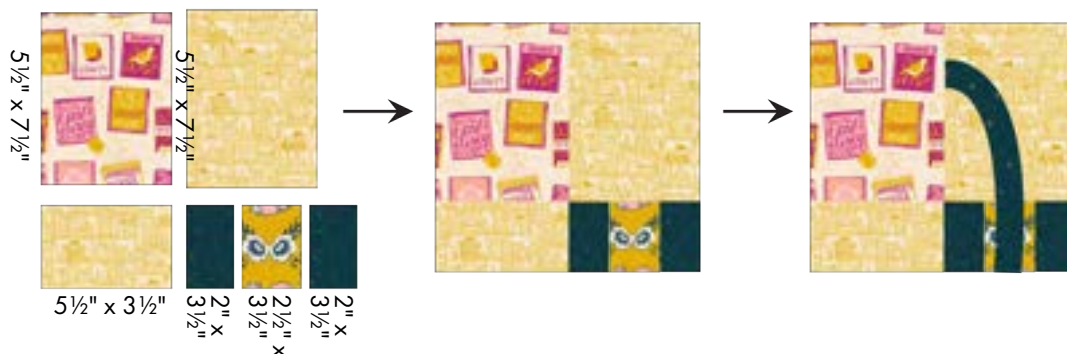
5. Applique the cat bodies to the background fabrics, as shown. Topstitch the cat body onto the background by stitching close to the pressed edges, or hand applique, as desired. Take care to applique one of Template A and one of Template B to each fabric.



6. For the cat front paw and hind paw units, follow the assembly diagrams below. Sew FOUR of each unit illustrated, using the fabrics indicated.



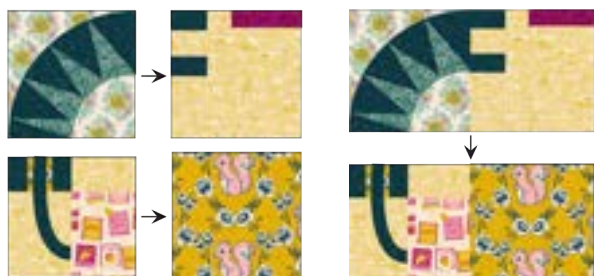
FRONT PAW UNITS
Make 4 (2 of each)



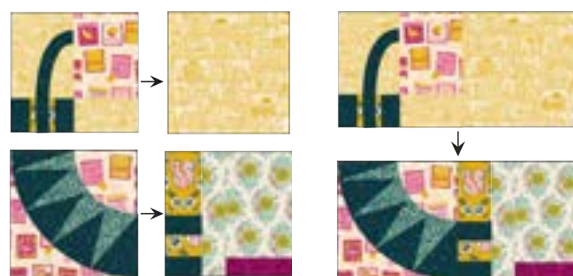
HIND PAW UNITS
Make 4

7. Sew each pair of tails together along the curved edges only, with right sides facing. Clip and notch the seams at the curved sections and turn tails right side out. Turn $\frac{1}{4}$ " to the inside at each tail end and press. After assembling the hind paw units, applique the tail piece in place by topstitching the tail close to the edges, or hand applique, as desired.

8. Assemble the cat body blocks from the units you've already sewn: one body unit, one front paw unit, one hind paw unit, plus one 10.5" x 10.5" square. Use the diagrams below, making two of each using the fabrics illustrated.



MAKE 2



MAKE 2



With the blocks assembled, add the cat head, ears and the ball of yarn. Each of these pieces is applied on top of the patchwork.

9. Begin by sewing each pair of ear pieces right sides together along the top of ear edges (not the curved lower edge) pivoting at the point of the ear. Clip the point seam allowance, turn right side out, and press.

10. Sew each pair of face pieces right sides together, and notch seam allowance all the way around each face. Clip a $1\frac{1}{2}$ " opening in the center of one of the face pieces in each pair, and turn the face right side out through the clipped hole. Press.

11. Applique the ears and head, placing the lower edge of the ears beneath the upper edge of the head; topstitch close to the edges of each piece, or hand applique, as desired.

12. Prepare the yarn balls following step 10. Place the ball of yarn

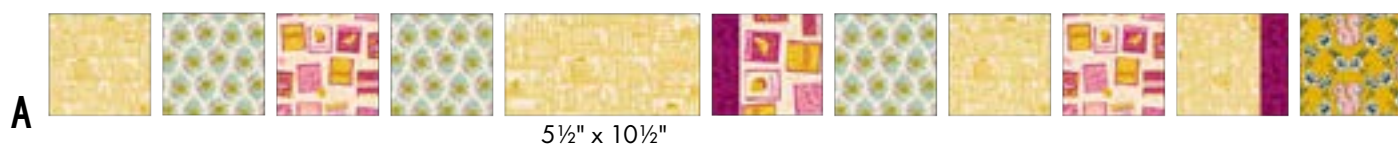
so that it covers the end of the $1\frac{1}{2}$ " strip of coordinating print fabric to create the appearance of a ball of yarn unwinding. Use the same applique method as in step 11.

Once the bodies of the cats are complete, begin creating the patchwork for the remainder of the quilt top. The letters for each row correspond to the final quilt top assembly diagram.

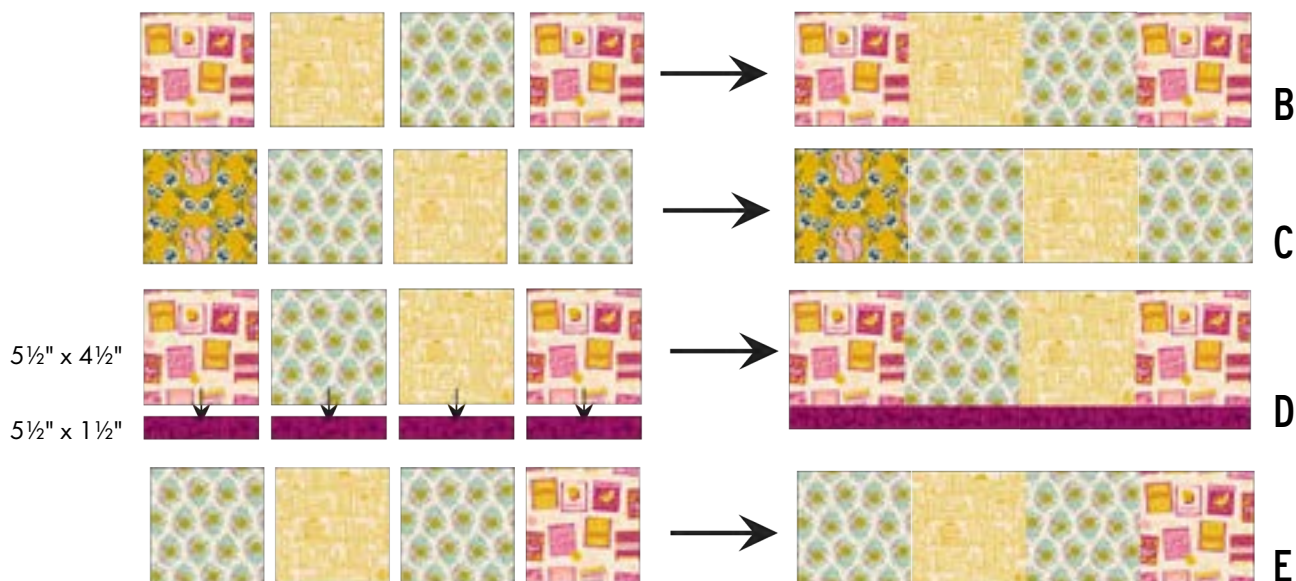


13. Sew one $4\frac{1}{2}$ " x $5\frac{1}{2}$ " piece to one $1\frac{1}{2}$ " x $5\frac{1}{2}$ " piece of each fabric shown to make two $5\frac{1}{2}$ " x $5\frac{1}{2}$ " units. Repeat until you have two of each.

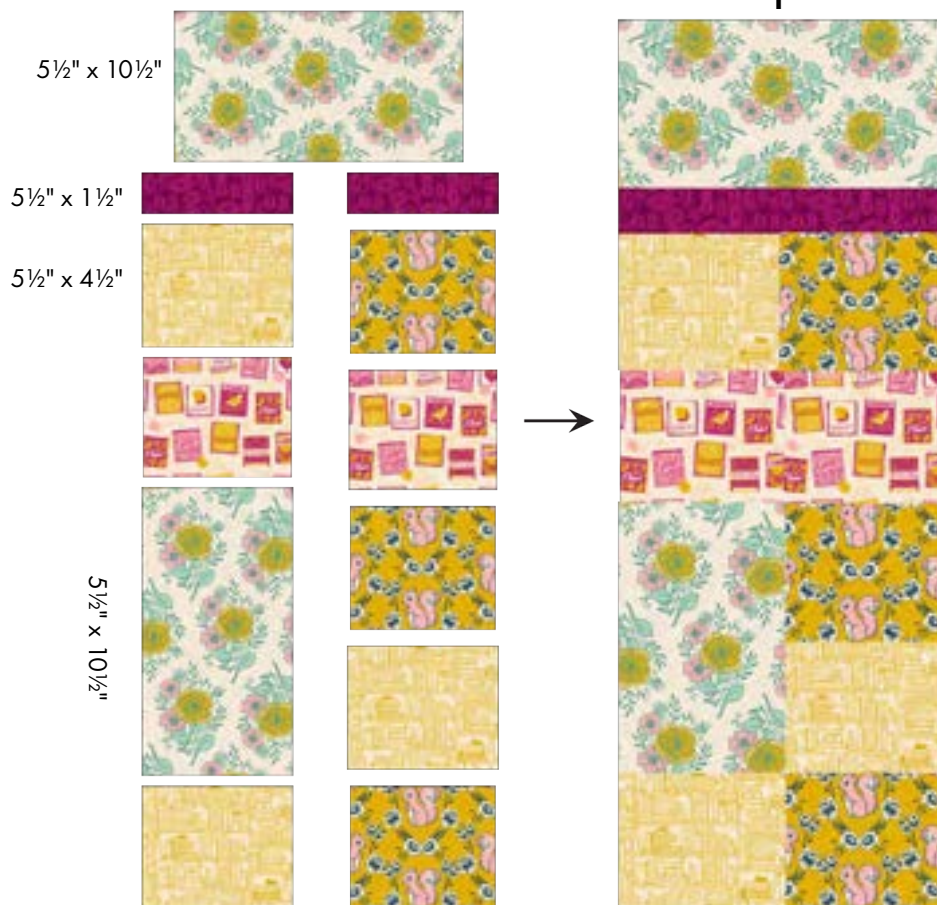
Using these pieces and the diagram below, assemble TWO of Row A. Unless otherwise noted, pieces measure $5\frac{1}{2}$ " x $5\frac{1}{2}$ ".



14. Using the $5\frac{1}{2}" \times 5\frac{1}{2}"$ pieces pictured below, assemble the following units. Press seam allowances open after sewing. Make TWO each of Rows B, C, D and E.



F

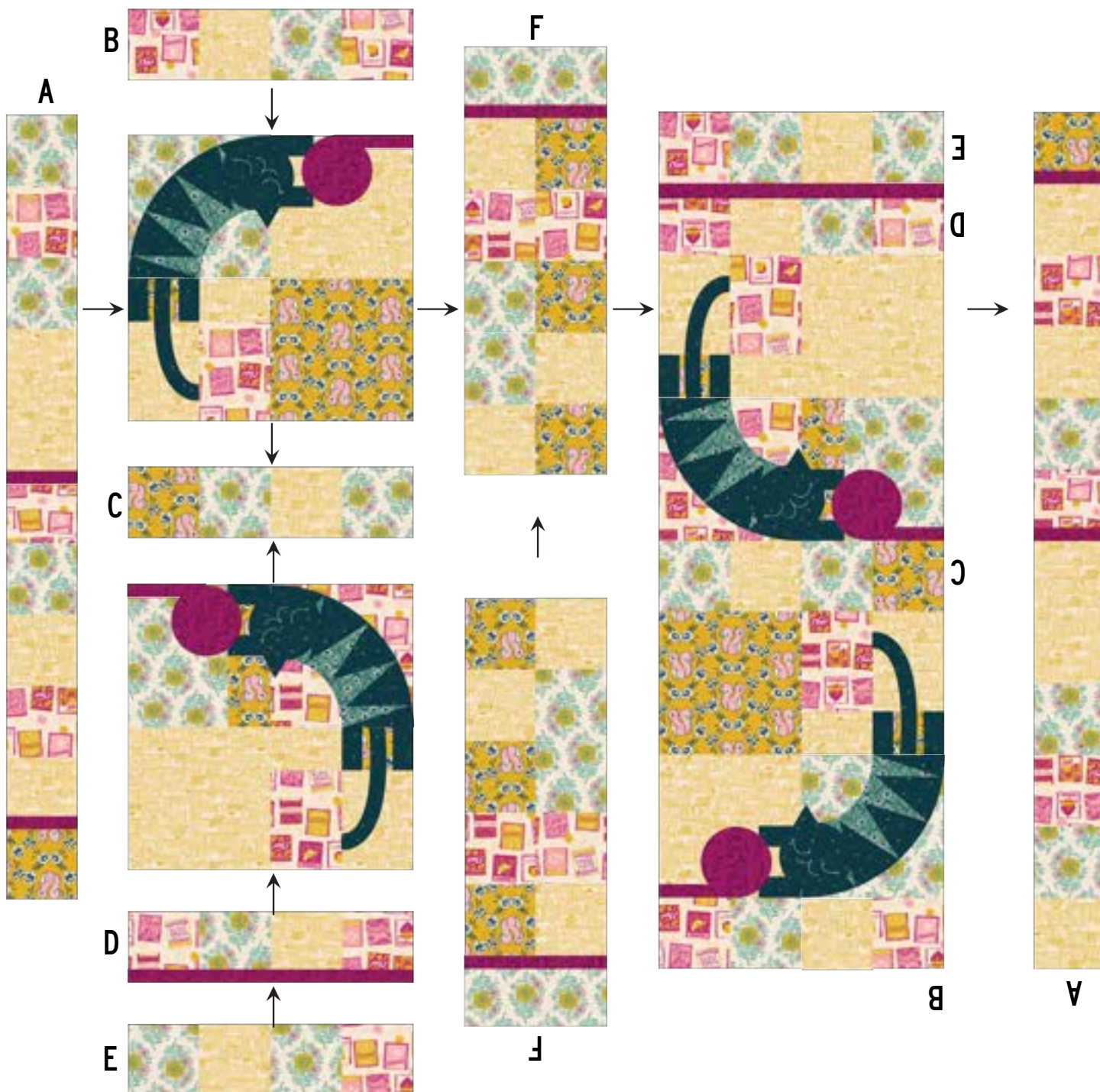


15. Using the pieces pictured at the left, assemble the center row of the quilt top.

Unless otherwise noted, pieces measure $5\frac{1}{2}" \times 5\frac{1}{2}"$. Press seam allowances open after sewing.

Make TWO of Row F.

16. Assemble the final quilt top using Rows A-F and the cat body units. Note that the left and right of the quilt are assembled from the same rows, but that the direction of the rows is reversed on the right (indicated by upside-down letters). The center column is composed of the two Row F units sewn end-to-end.



17. Using the template provided and a backstitch, add hand embroidery to create eyes and noses.

18. Quilt and bind as desired.

YOU DID IT! YOU MADE A CAT LADY QUILT!!

Be sure to use #rubystarsociety and #readingnookfabric when sharing your creations so we can see them!

★ RUBY STAR ★
SOCIETY

moda
FABRICS + SUPPLIES



@rubystarsociety

CAT LADY QUILT

Don't forget to print the Paper Piecing template at 100%! You will need 2 copies of each paper piecing template page, and 1 copy of the tail, head, and ears template.

Fabrics are from Reading Nook by Sarah Watts for Ruby Star Society. Quilt designed by Sarah Watts, with instructions written



60" x 60"

FABRIC REQUIREMENTS



RS2080-12
1½ yd



RS2076-11
1¼ yd



RS0005-37M
1⅓ yd



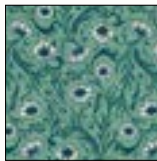
RS2081-12
¾ yd



RS2077-11
1 yd



RS2078-11
1¼ yd



RS2082-13
½ yd

BINDING: ½ yd

BACKING: 4 yd

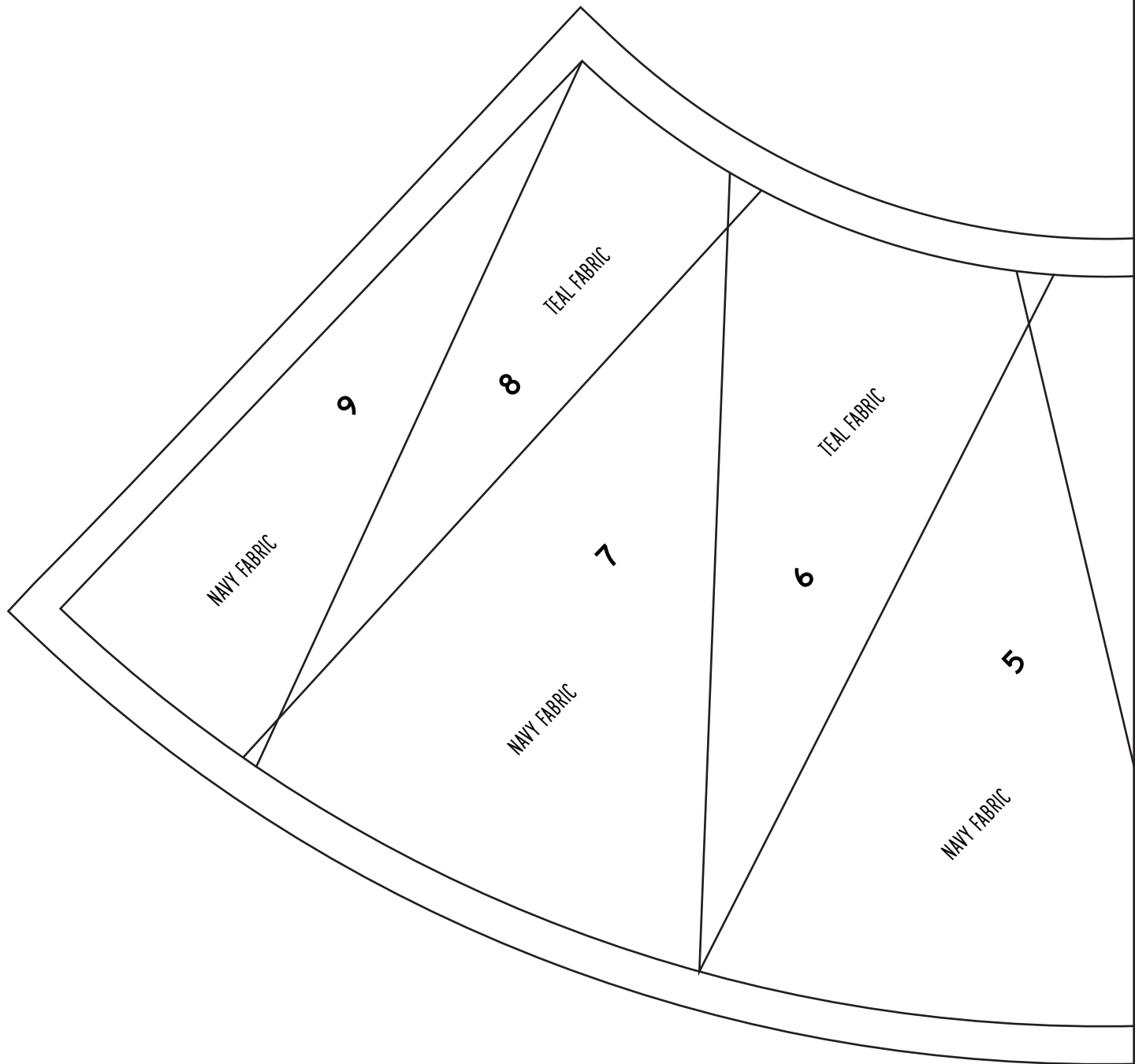
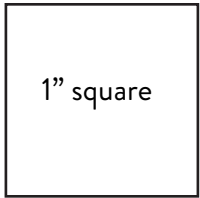
BATTING: at least 72" x 72"

★ RUBY STAR
SOCIETY ★

moda
FABRICS + SUPPLIES

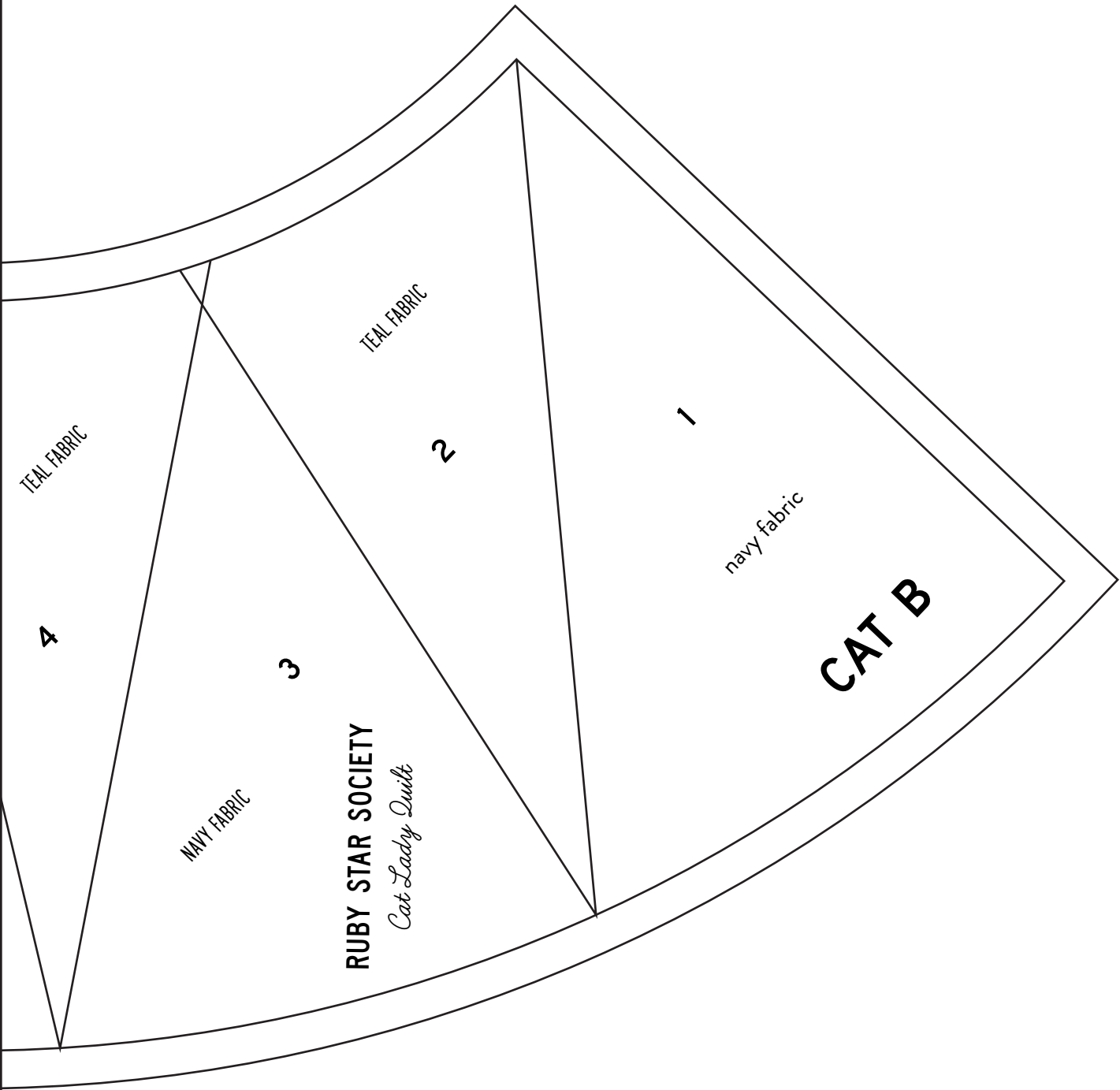
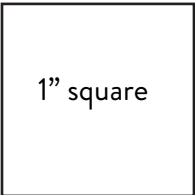
Copyright 2022 Ruby Star Society. Copying or otherwise redistributing is strictly prohibited. For personal use only.

A



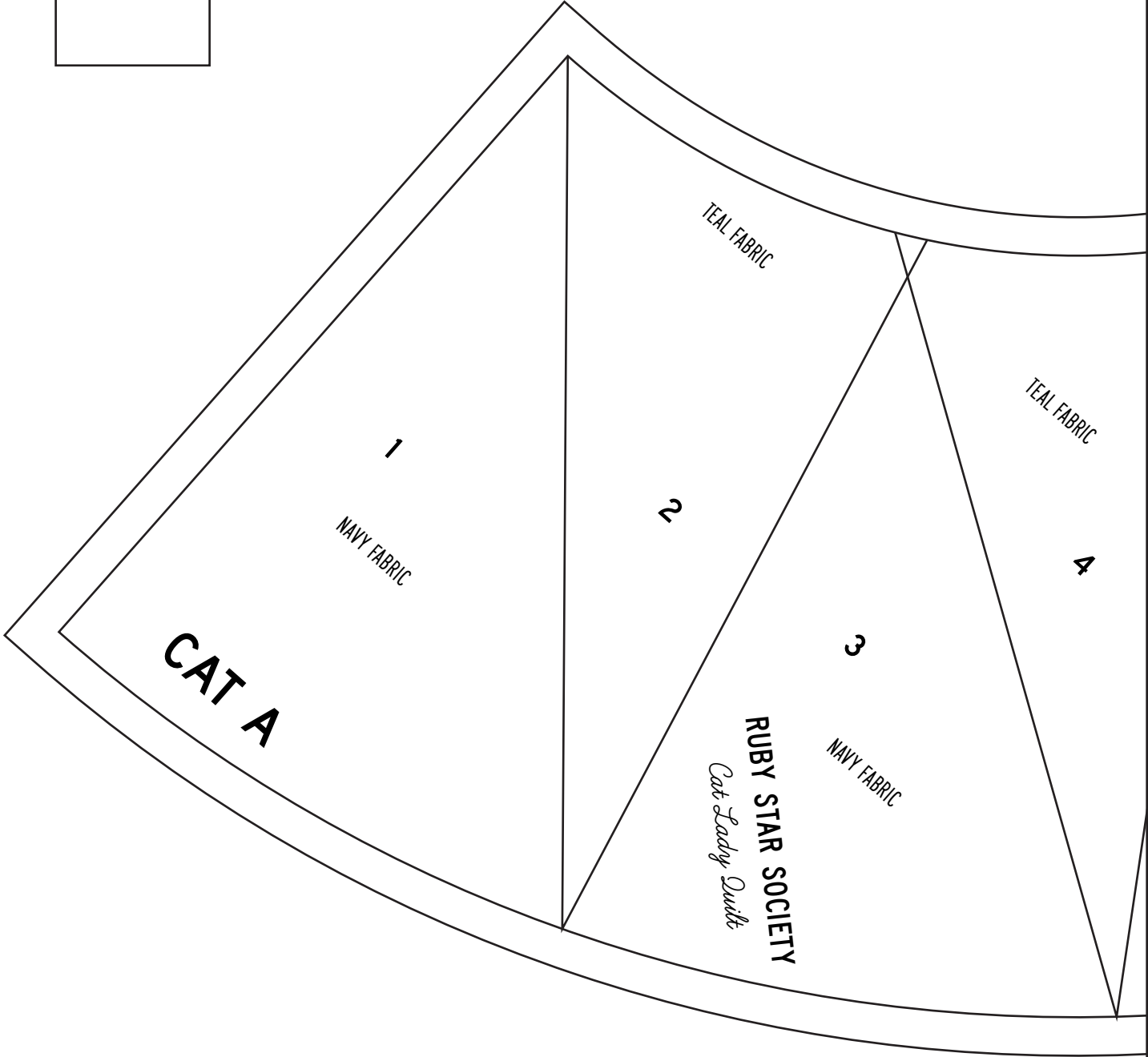
B

A



B

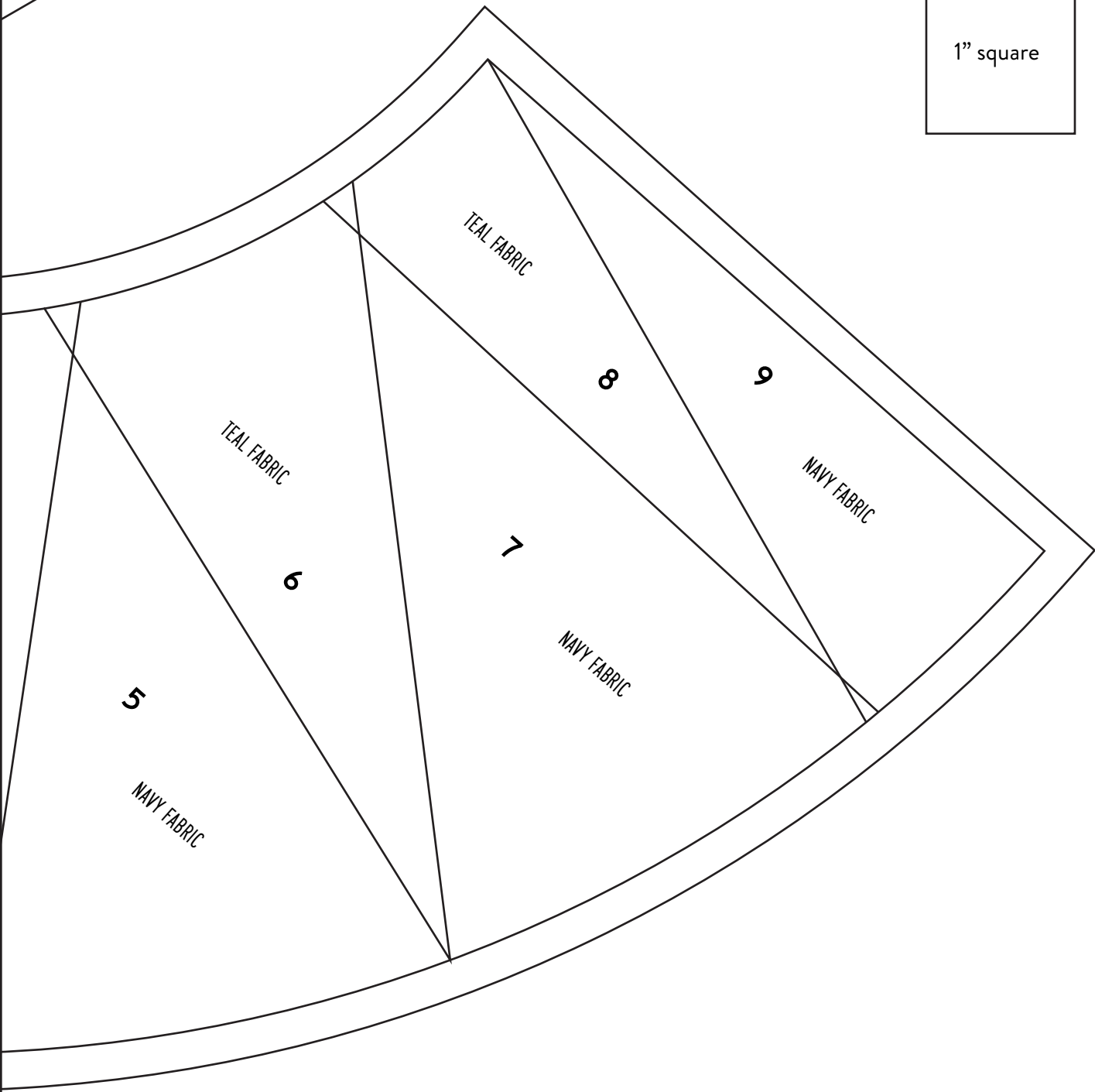
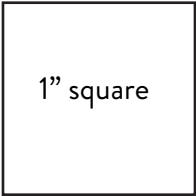
1" square



C

D

C



D

1" square

RUBY STAR SOCIETY

Cat Lady Quilt

YARN BALL



CAT FACE EMBROIDERY DESIGN

RUBY STAR SOCIETY

Cat Lady Quilt

