

**Template Free Piecing**

Each letter requires 1 JellyRoll™ strip and 1 Fat Eighth

*moda*

MODAFABRICS.COM

PSABC — SUGGESTED RETAIL \$8.00

# HOW TO *make an Alphabet Quilt*

- Quilt Size: 59"x68" finished
- Letter Block Size: 8"x10" finished
- Letter Block with Sashing Size: 9"x12" finished

## Fabric Requirements

Note: Each block requires 1 JellyRoll™ strip for the letter and 1 fat eighth of background fabric.

Letters 1 – JellyRoll™  
 Background 26 – Fat Eighths or 3½ yds.  
 Sashing and Borders and Pieced Blocks 2½ yds.  
 Binding ⅝ yd.  
 Backing 2 yds. pieced crosswise

## Helpful Tools

Omnigrip by Omnigrid 8½" x 12" ruler  
 (RN8512 Omnigrid #1)  
 Folded Corner Clipper by Prairie Sky Quilting  
 (#502 Prairie Sky #1)  
 6½"x6½" square ruler with diagonal guideline

## Cutting Directions

Letters, Background and Pieced Blocks: Refer to each letter/block page

Sashing and Borders

Cut 2 – 10½"xWOF strips and 2 – 9½"xWOF strips

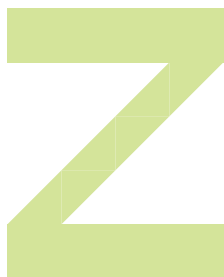
Subcut 30–1½" x 10½", 30–2½" x 9½" and from remainder cut 8–1½" x 8½" strips for sashings

Cut 2 – 2½"xWOF strips, 4 – 3½"xWOF strips and 2 – 5½"xWOF strips for borders

Use the remaining fabric for pieced blocks.

Binding – Cut 7 – 2½"xWOF strips

# Moda Spell it with Fabric



## Parts

Background:

4–2½"x4½"

4–2½"x2½"

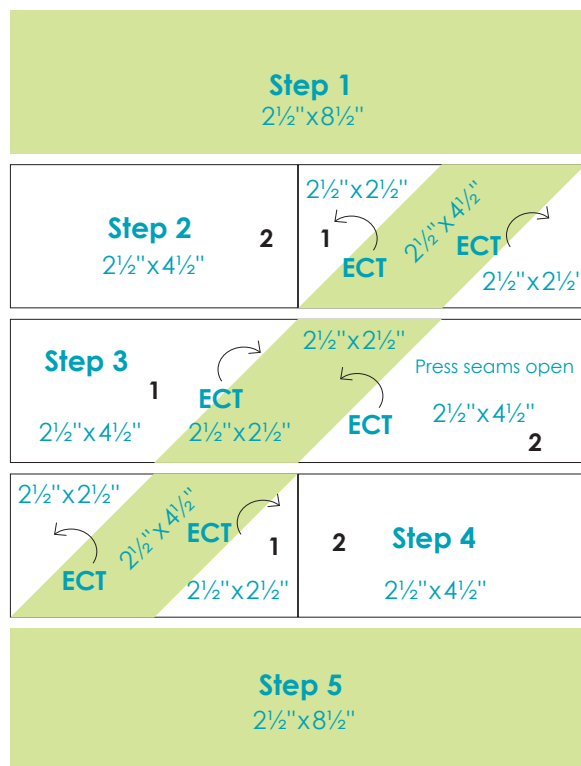
Print:

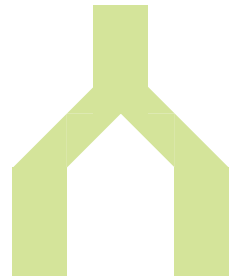
2–2½"x8½"

2–2½"x4½"

2–2½"x2½"

Press toward Print except some ECTs then follow direction of arrows.





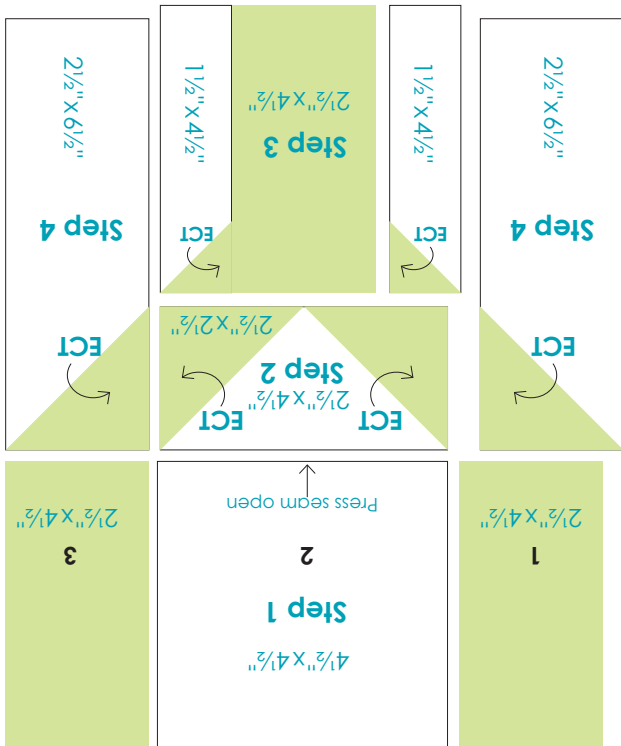
Parts

Background:  
 2-2 1/2" x 6 1/2"  
 1-4 1/2" x 4 1/2"  
 1-2 1/2" x 4 1/2"  
 2-1 1/2" x 4 1/2"

Print:

3-2 1/2" x 4 1/2"  
 4-2 1/2" x 2 1/2"  
 2-1 1/2" x 1 1/2"

Press toward Print except some ECTs then follow direction of arrows.



## Hints & Explanations

**Seams** – Use a scant 1/4" seam

**Pressing** – Press seams toward print or as directed. Press seams open where indicated.

**Assembly** – Piece and assemble each block following the Steps. The numbers (1,2,3,etc.) indicate order of assembly within a Step.

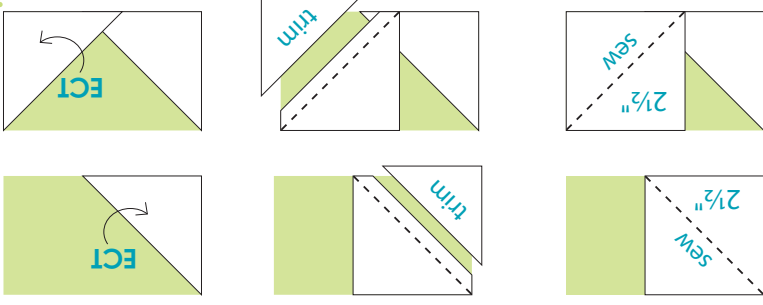
## ECT – Easy Corner Triangles

Draw a diagonal line on the back of the 2 1/2" or 1 1/2" squares.

Sew a marked square on the diagonal line to the background rectangle or square as directed in the block instructions. Trim 1/4" from the background.

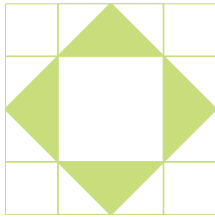
do not cut away the background. This will help to keep letter pieces straight.

Press to the corner to form a triangle.



# Pieced Block Assembly – Press toward Print

Choose 4 of the 8" finished blocks below or select another 8" block of your own, or applique an 8" block to complete this quilt.



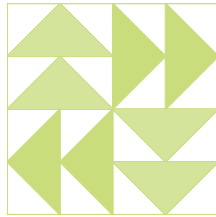
**A**

Background:

1-4½" x 4½"  
12-2½" x 2½"

Print:

4-2½" x 4½"



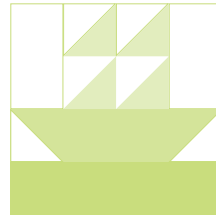
**B**

Background:

16-2½" x 2½"

Prints:

8-2½" x 4½"



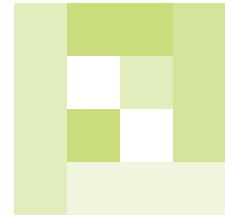
**C**

Background:

2-2½" x 4½"  
6-2½" x 2½"

Prints:

2-2½" x 8½"  
4-2½" x 2½"



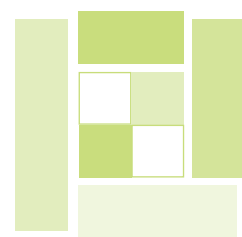
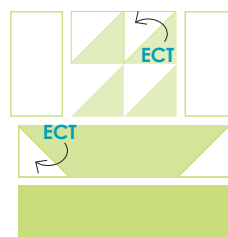
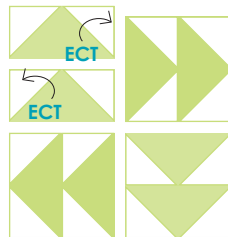
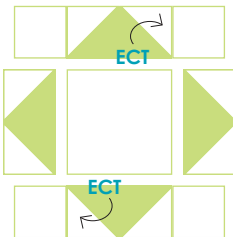
**D**

Background:

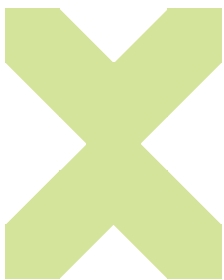
2-2½" x 2½"

Prints:

1-2½" x 8½"  
2-2½" x 6½"  
1-2½" x 4½"  
2-2½" x 2½"



## Moda Spell it with Fabric



**Parts** — include seam allowance

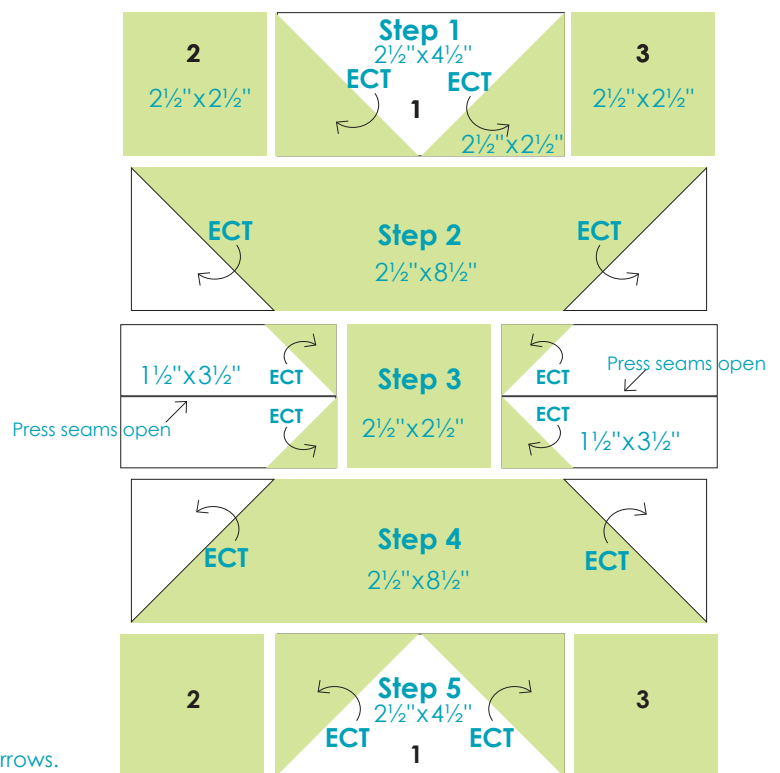
Background:

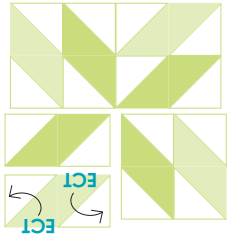
2-2½" x 4½"  
4-2½" x 2½"  
4-1½" x 3½"

Print:

2-2½" x 8½"  
9-2½" x 2½"  
4-1½" x 1½"

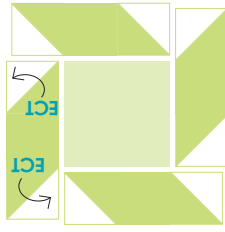
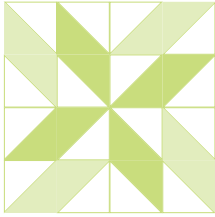
Press toward Print except some ECTs then follow direction of arrows.





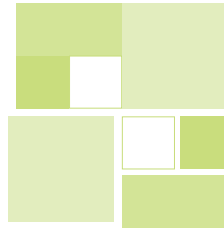
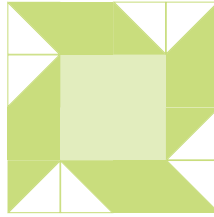
Background: 16-2 1/2" x 2 1/2"  
 Prints: 4-2 1/2" x 4 1/2"  
 4-2 1/2" x 4 1/2"

(H)



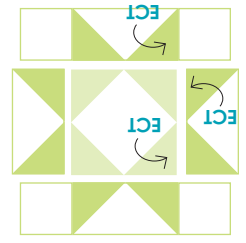
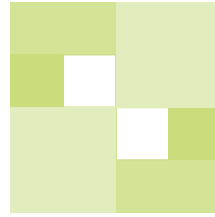
Background: 8-2 1/2" x 2 1/2"  
 Prints: 1-4 1/2" x 4 1/2"  
 4-2 1/2" x 6 1/2"

(G)



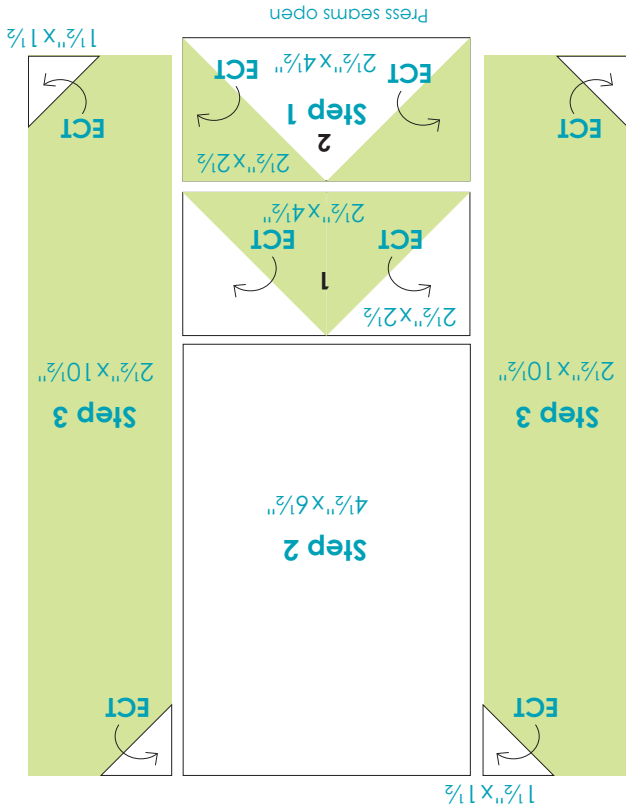
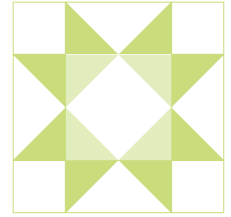
Background: 2-2 1/2" x 2 1/2"  
 Prints: 2-4 1/2" x 4 1/2"  
 2-2 1/2" x 4 1/2"  
 2-2 1/2" x 2 1/2"

(F)



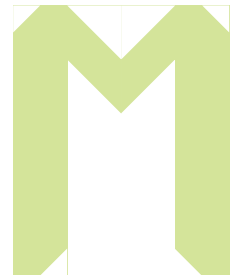
Background: 1-4 1/2" x 4 1/2"  
 4-2 1/2" x 4 1/2"  
 4-2 1/2" x 2 1/2"  
 Prints: 8-2 1/2" x 2 1/2"  
 4-2 1/2" x 2 1/2"

(E)

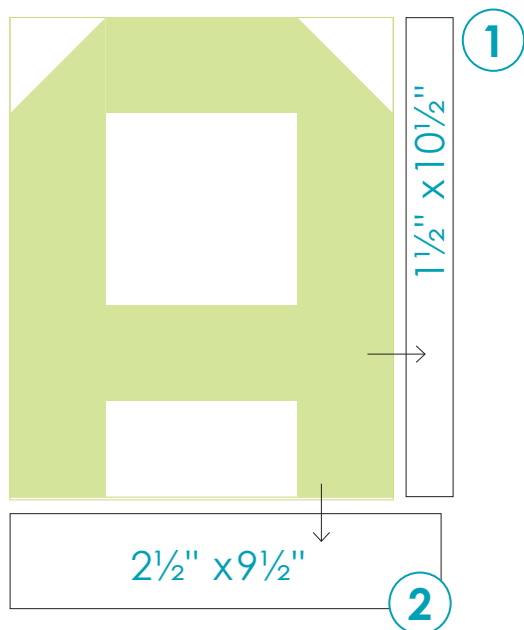


Press toward Print except some ECTs then follow direction of arrows.

Parts — include seam allowance  
 Background: 1-4 1/2" x 6 1/2"  
 1-2 1/2" x 4 1/2"  
 2-2 1/2" x 2 1/2"  
 4-1 1/2" x 1 1/2"  
 Print: 2-2 1/2" x 10 1/2"  
 1-2 1/2" x 4 1/2"  
 2-2 1/2" x 2 1/2"



## Block Assembly – Press toward sashings



### Letter Block

Each **letter block** finishes at 8"x10"

Add a 1½"x10½" sashing strip to the right side of each letter. Press toward the sashing. Then add a 2½" x 9½" sashing strip to the bottom of the block. Press toward the sashing. See *diagram*.

Both Letter and Pieced blocks should measure 9½"x12½" with seams.

## Moda Spell it with Fabric



**Parts** — include seam allowance

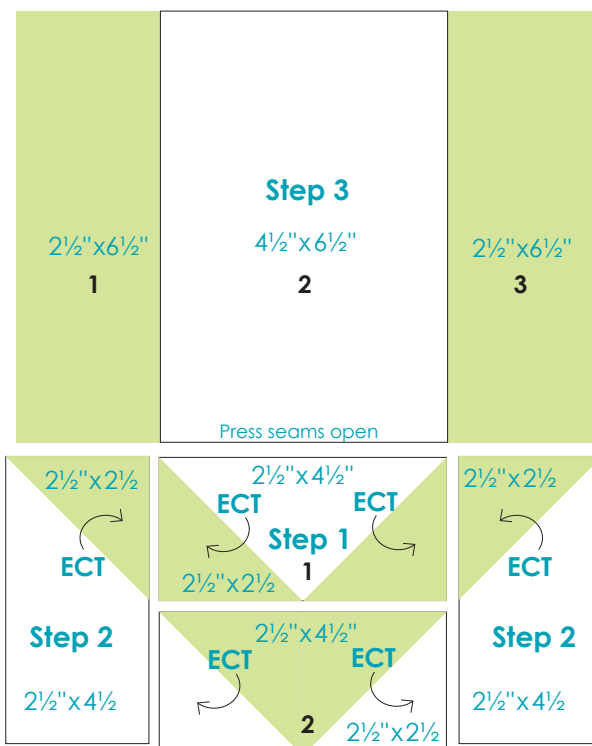
### Background:

- 1-4½"x6½"
- 3-2½"x4½"
- 2-2½"x2½"

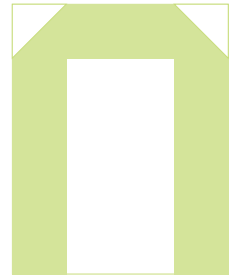
### Print:

- 2-2½"x6½"
- 1-2½"x4½"
- 4-2½"x2½"

Press toward Print except some ECTs then follow direction of arrows.



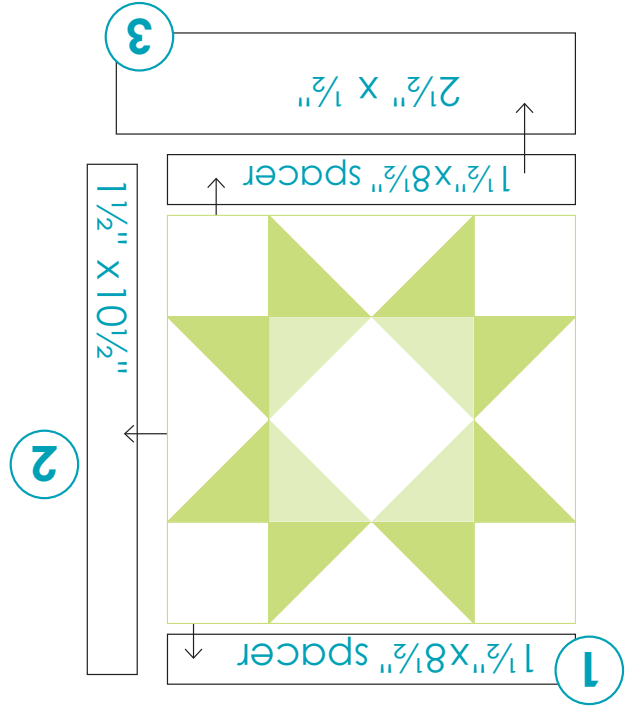
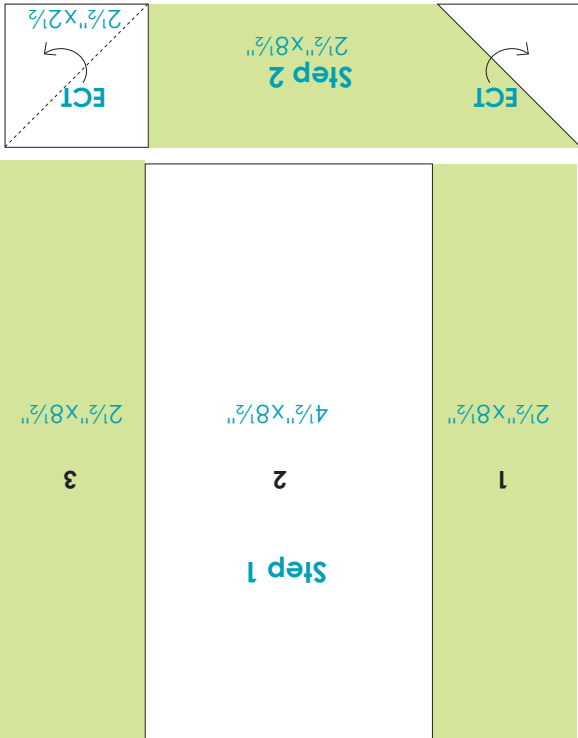
# Spell it with Fabric



Parts — include seam allowance

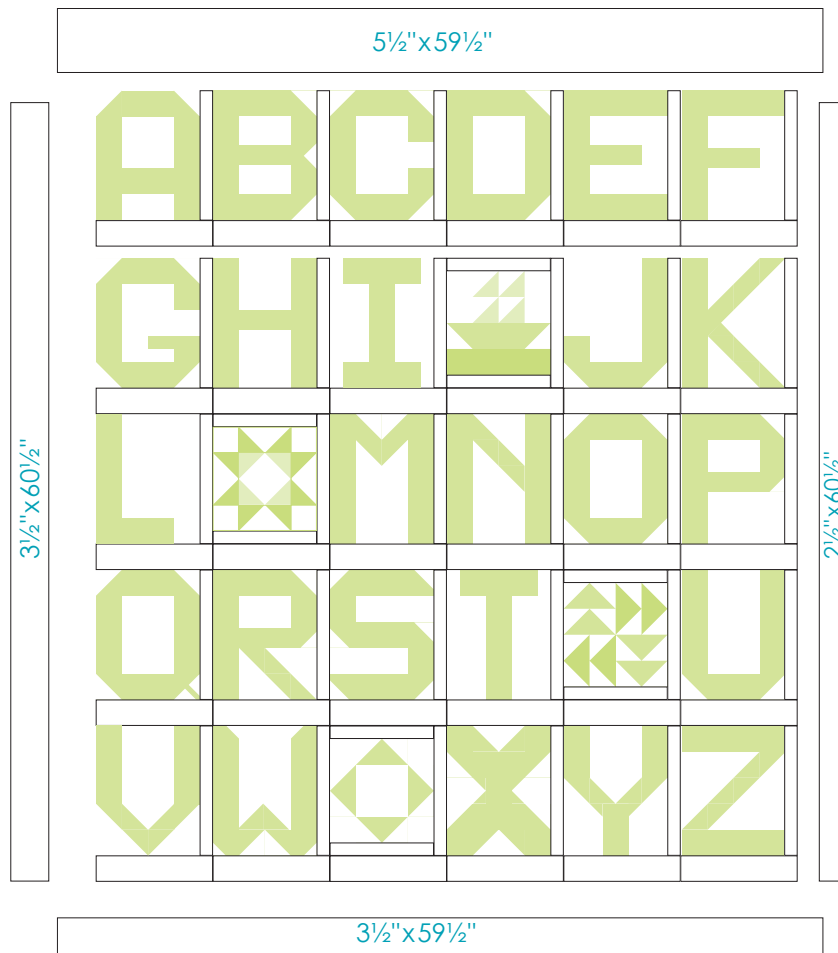
- Background:
- 1-4 1/2" x 8 1/2"
  - 2-2 1/2" x 2 1/2"
- Print:
- 3-2 1/2" x 8 1/2"

Press toward Print except some ECTs then follow direction of arrows.



## Pieced Block

Each **pieced block** finishes at 8" x 8". Add a 1 1/2" x 8 1/2" spacer strip to the top and bottom of each pieced block. Press toward the spacer. Follow the directions above to add sashing strips to side and bottom of pieced block.



Quilt top should measure 59 1/2" x 68 1/2" with seams.

### Different Sashing Sizes

Since sashings and spacers were not added to all sides of each block, the borders for this quilt are different sizes in order to square the quilt.

## Moda Spell it with Fabric



**Parts** — include seam allowance

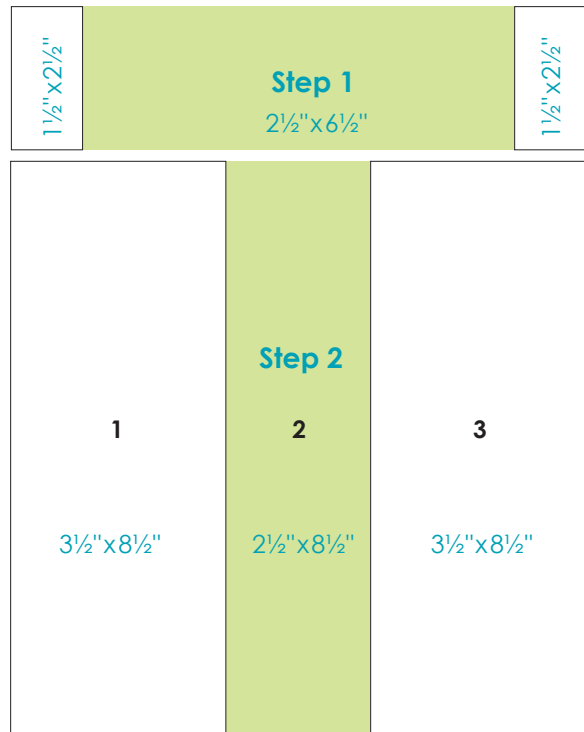
**Background:**

- 2-3 1/2" x 8 1/2"
- 2-1 1/2" x 2 1/2"

**Print:**

- 1-2 1/2" x 8 1/2"
- 1-2 1/2" x 6 1/2"

Press toward Print except some ECTs then follow direction of arrows.





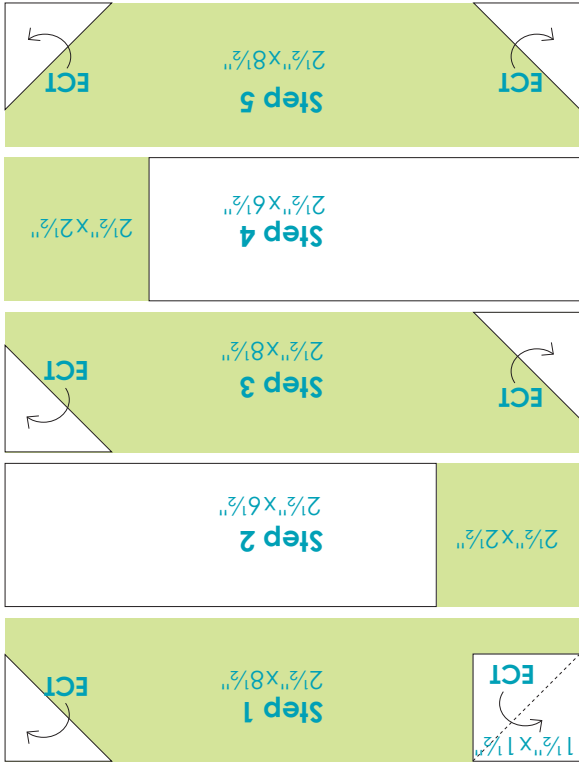


Parts — include seam allowance

Background:  
2-2½" x 6½"  
6-1½" x 1½"

Print:  
3-2½" x 8½"  
2-2½" x 2½"

Press toward Print except some ECTs then follow direction of arrows.



## Putting it All Together

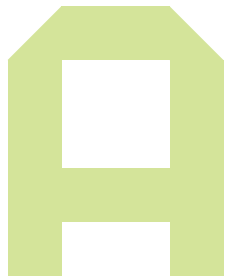
1. Stitch the 26 letter blocks and 4 pieced blocks into 5 rows of 6 blocks. Press toward the sashings.
2. Cut the pieced border strips into the following borders:  
1-2½" x 60½", 1-3½" x 60½", 1-5½" x 59½", 1-5½" x 59½", and 1-3½" x 59½",  
(Note: Since sashings and spacers were not added to all sides of each block, the borders for this quilt are different sizes in order to square the quilt.)
3. Add the 3½" x 60½" border to the left side of the quilt and the 2½" x 60½" to the right. Press toward border.
4. Add the 5½" x 59½" border to the top of the quilt and the 3½" x 59½" to the bottom. Press toward border.

Quilt top should measure 59½" x 69½" with seams.

## Finishing

1. Using a diagonal seam, join the 7 - 2½" x WOF strips end to end. Press seams open.
2. Fold prepared strip in half wrong sides together and press to make the binding.
3. Layer, Quilt and Bind

# Moda Spell it with Fabric



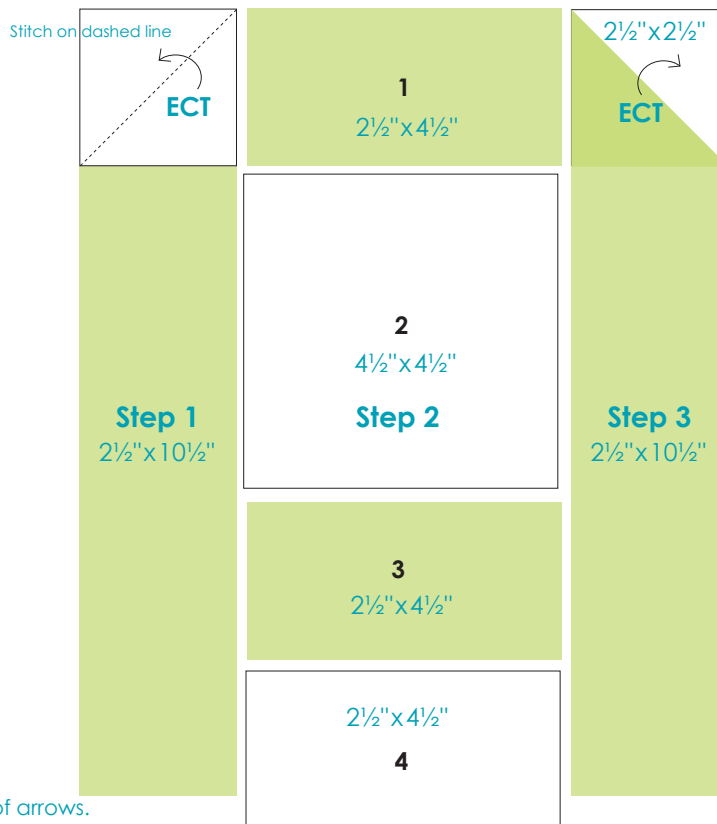
**Parts** — include seam allowance

**Background:**

- 1-4½" x 4½"
- 1-2½" x 4½"
- 2-2½" x 2½"

**Print:**

- 2-2½" x 10½"
- 2-2½" x 4½"



Press toward Print except some ECTs then follow direction of arrows.

# Moda Spell it with Fabric



**Parts** — include seam allowance

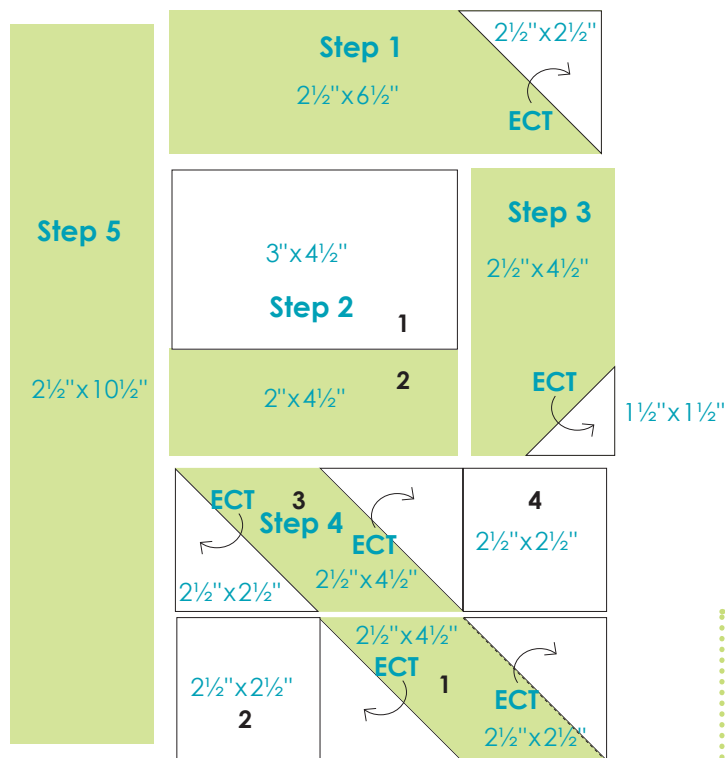
**Background:**

- 1-3" x 4½"
- 7-2½" x 2½"
- 1-1½" x 1½"

**Print:**

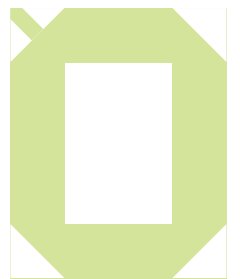
- 1-2½" x 10½"
- 3-2½" x 4½"
- 1-2" x 4½"
- 1-2½" x 6½"

Press toward Print except some ECTs then follow direction of arrows.



# Spell it with fabric

*Moda*



**Parts** — include seam allowance

**Background:**

1-4½" x 6½"

1-3" x 3" cut once diagonally

3-2½" x 2½"

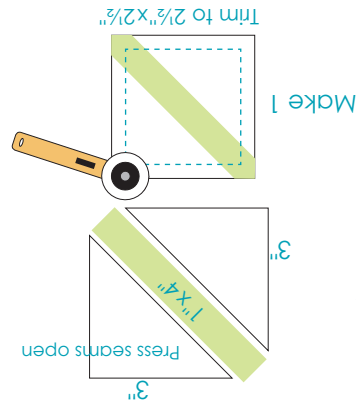
**Print:**

2-2½" x 8½"

2-2½" x 6½"

1-1" x 4"

Press toward Print



# Spell it with fabric

*Moda*



**Parts** — include seam allowance

**Background:**

2-2¾" x 4½"

2-1½" x 1½"

2-2½" x 2½"

**Print:**

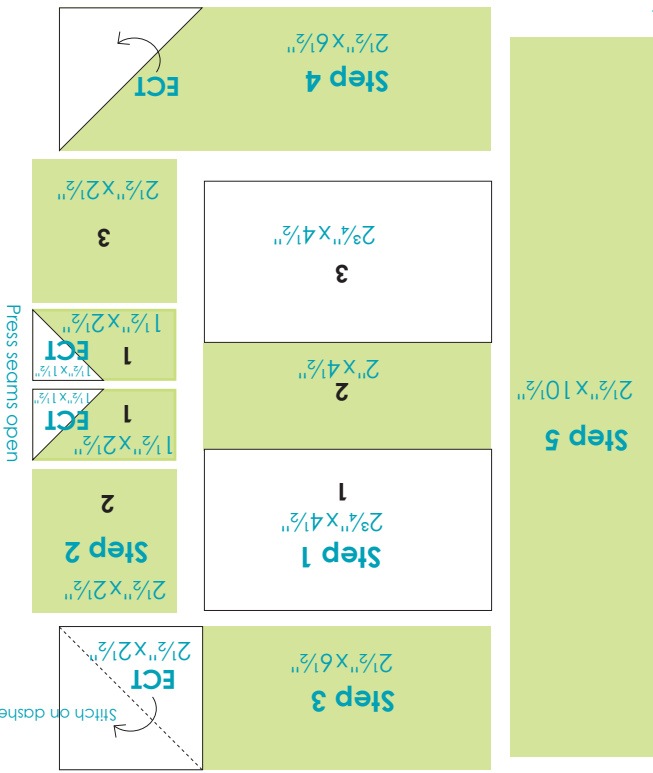
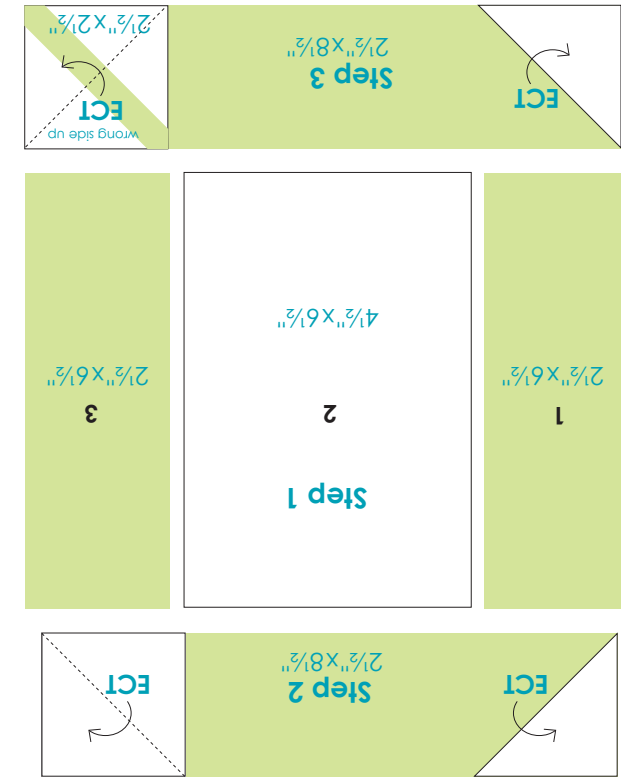
1-2½" x 10½"

2-1½" x 2½"

2-2½" x 6½"

1-2" x 4½"

Press toward Print except some ECTs then follow direction of arrows.



# Moda Spell it with Fabric



**Parts** — include seam allowance

**Background:**

1-4½" x 6½"

5-2½" x 2½"

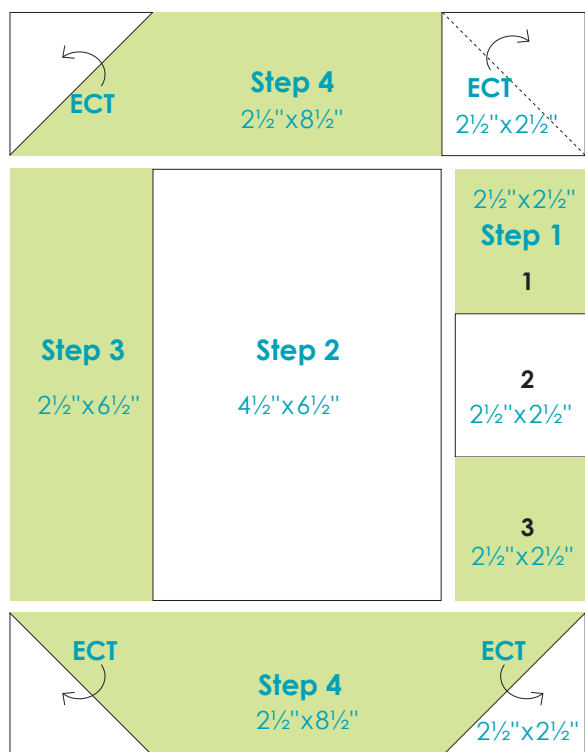
**Print:**

2-2½" x 8½"

1-2½" x 6½"

2-2½" x 2½"

Press toward Print except some ECTs then follow direction of arrows.



# Moda Spell it with Fabric



**Parts** — include seam allowance

**Background:**

1-3" x 4½"

1-2½" x 2½"

1-1½" x 1½"

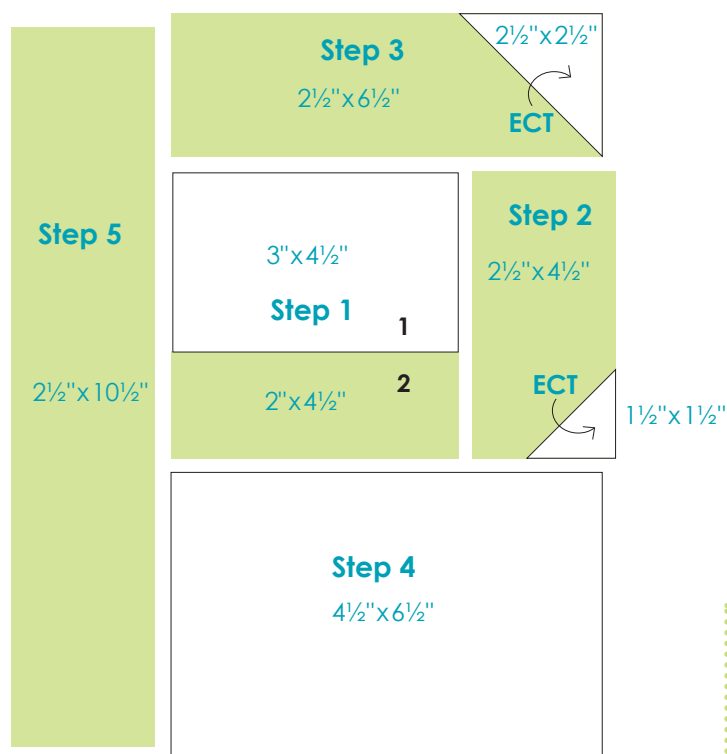
1-4½" x 6½"

**Print:**

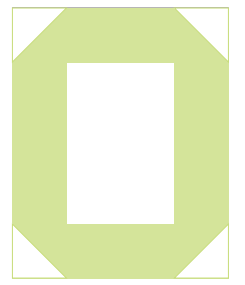
1-2½" x 10½"    2-2½" x 4½"

1-2" x 4½"    1-2½" x 6½"

Press toward Print except some ECTs then follow direction of arrows.

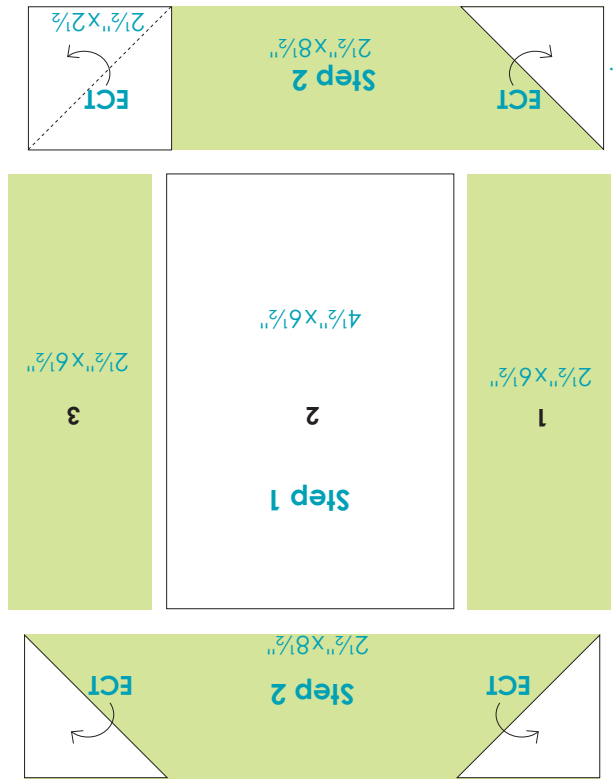


# Spell it with Fabric

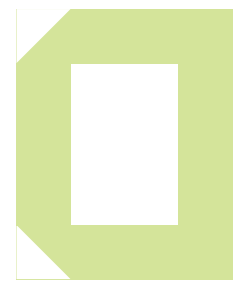


**Parts** — include seam allowance  
**Background:** 1-4 1/2" x 6 1/2"  
 4-2 1/2" x 2 1/2"  
**Print:** 2-2 1/2" x 8 1/2"  
 2-2 1/2" x 6 1/2"

Press toward Print except some ECTs then follow direction of arrows.

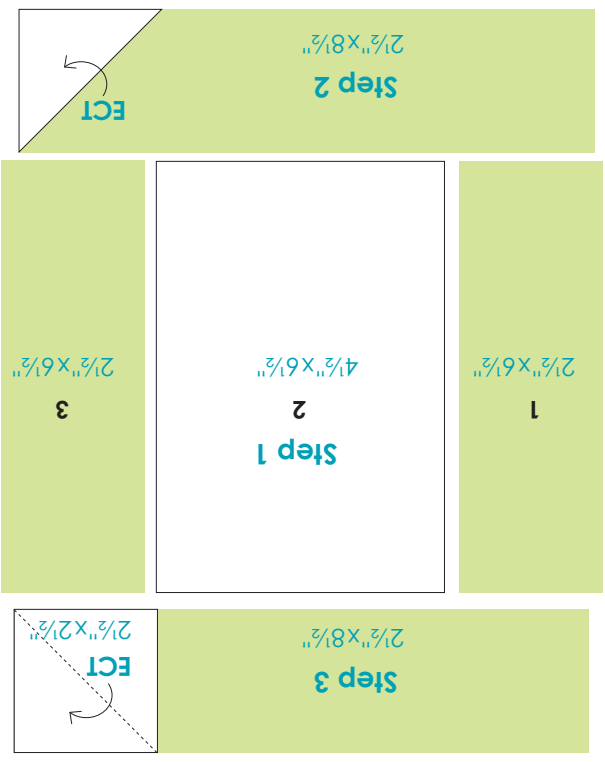


# Spell it with Fabric



**Parts** — include seam allowance  
**Background:** 1-4 1/2" x 6 1/2"  
 2-2 1/2" x 2 1/2"  
**Print:** 2-2 1/2" x 8 1/2"  
 2-2 1/2" x 6 1/2"

Press toward Print except some ECTs then follow direction of arrows.



# Moda Spell it with Fabric

# E

**Parts** — include seam allowance

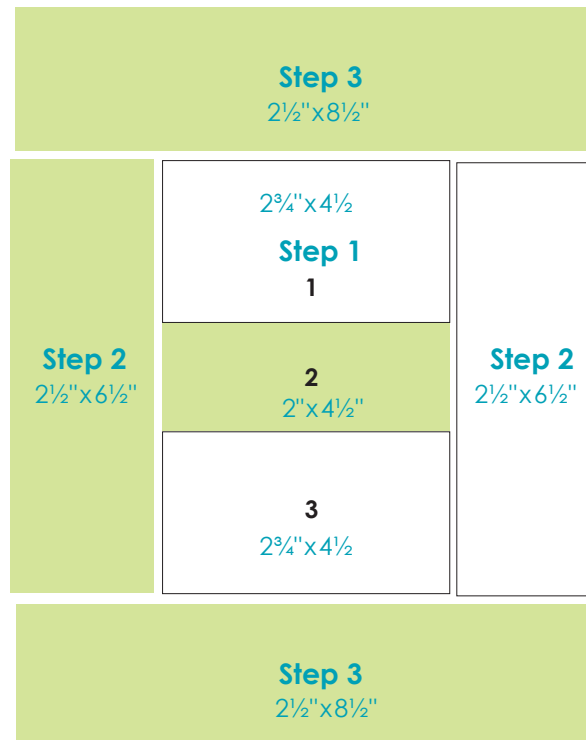
**Background:**

2-2<sup>3</sup>/<sub>4</sub>"x4<sup>1</sup>/<sub>2</sub>"  
1-2<sup>1</sup>/<sub>2</sub>"x6<sup>1</sup>/<sub>2</sub>"

**Print:**

2-2<sup>1</sup>/<sub>2</sub>"x8<sup>1</sup>/<sub>2</sub>"  
1-2<sup>1</sup>/<sub>2</sub>"x6<sup>1</sup>/<sub>2</sub>"  
1-2"x4<sup>1</sup>/<sub>2</sub>"

Press toward Print except some ECTs then follow direction of arrows.



# Moda Spell it with Fabric

# N

**Parts** — include seam allowance

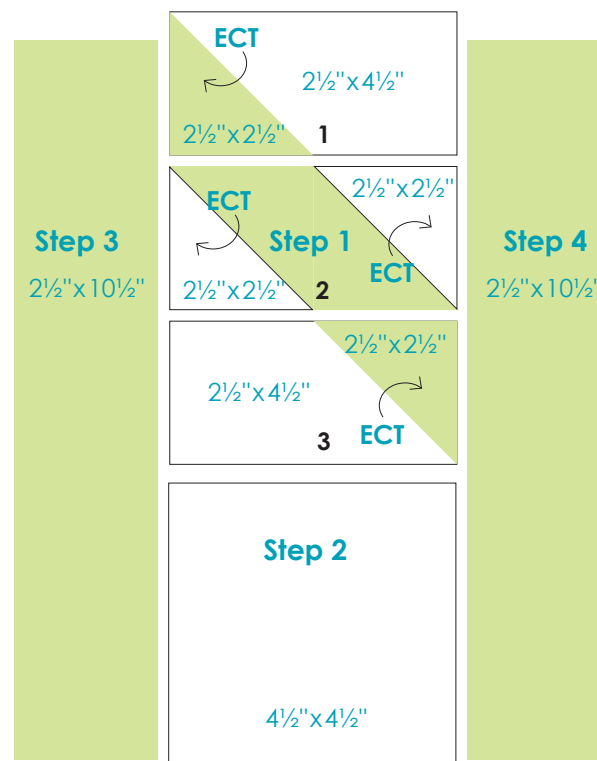
**Background:**

1-4<sup>1</sup>/<sub>2</sub>"x4<sup>1</sup>/<sub>2</sub>"  
2-2<sup>1</sup>/<sub>2</sub>"x4<sup>1</sup>/<sub>2</sub>"  
2-2<sup>1</sup>/<sub>2</sub>"x2<sup>1</sup>/<sub>2</sub>"

**Print:**

2-2<sup>1</sup>/<sub>2</sub>"x10<sup>1</sup>/<sub>2</sub>"  
1-2<sup>1</sup>/<sub>2</sub>"x4<sup>1</sup>/<sub>2</sub>"  
2-2<sup>1</sup>/<sub>2</sub>"x2<sup>1</sup>/<sub>2</sub>"

Press toward Print except some ECTs then follow direction of arrows.



# Spell it with Fabric

*Moda*



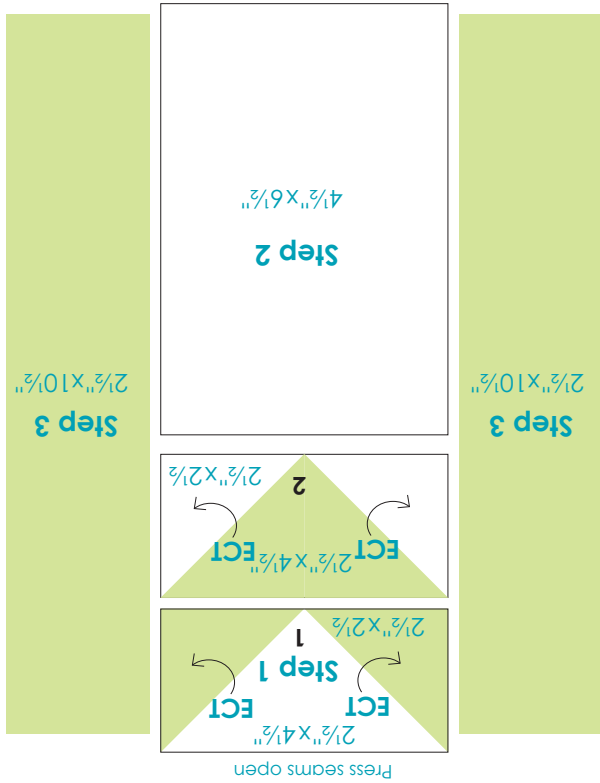
**Parts** — include seam allowance

**Background:**  
 1-4 1/2" x 6 1/2"  
 1-2 1/2" x 4 1/2"  
 2-2 1/2" x 2 1/2"

**Print:**

2-2 1/2" x 10 1/2"  
 1-2 1/2" x 4 1/2"  
 2-2 1/2" x 2 1/2"

Press toward Print except some ECTs then follow direction of arrows.



# Spell it with Fabric

*Moda*



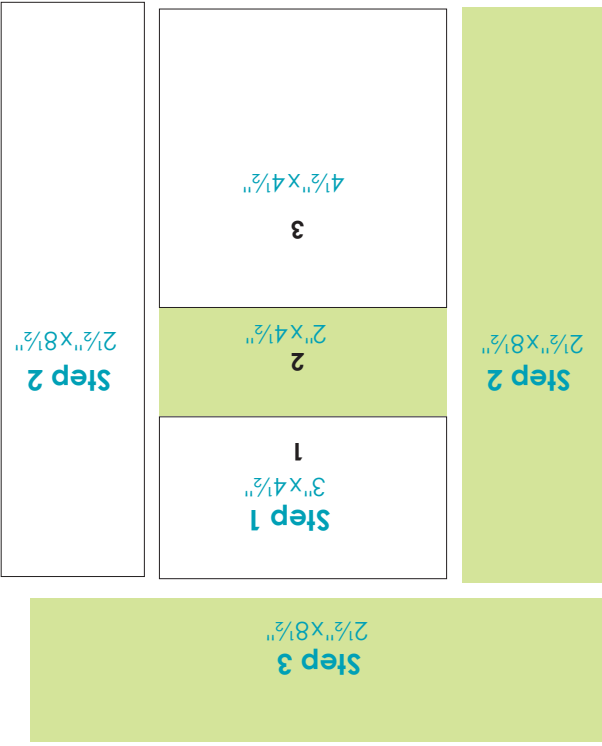
**Parts** — include seam allowance

**Background:**  
 1-4 1/2" x 4 1/2"  
 1-3" x 4 1/2"  
 1-2 1/2" x 8 1/2"

**Print:**

2-2 1/2" x 8 1/2"  
 1-2" x 4 1/2"

Press toward Print except some ECTs then follow direction of arrows.



# Moda Spell it with Fabric



**Parts** — include seam allowance

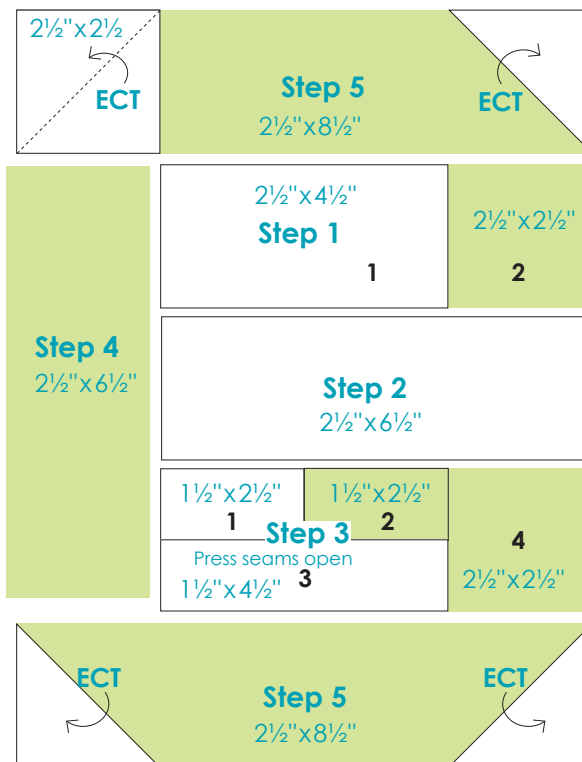
**Background:**

- 1-2½" x 4½"      1-1½" x 4½"
- 1-2½" x 6½"      1-1½" x 2½"
- 4-2½" x 2½"

**Print:**

- 2-2½" x 8½"      2-2½" x 2½"
- 1-2½" x 6½"      1-1½" x 2½"

Press toward Print except some ECTs then follow direction of arrows.



# Moda Spell it with Fabric



**Parts** — include seam allowance

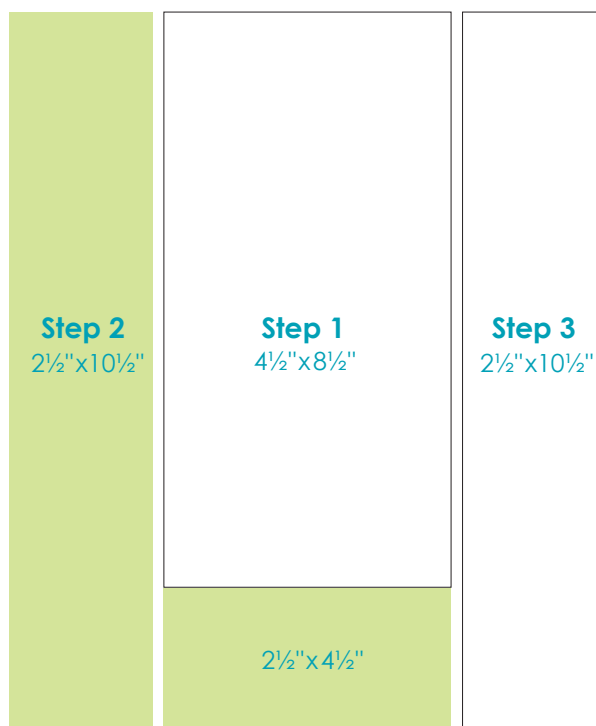
**Background:**

- 1-2½" x 10½"
- 1-4½" x 8½"

**Print:**

- 1-2½" x 10½"
- 1-2½" x 4½"

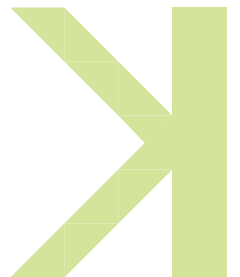
Press toward Print except some ECTs then follow direction of arrows.





# Spell it with fabric

*Moda*



**Parts** — include seam allowance

**Background:**  
 1-2-2/2" x 2-1/2"  
 1-2 1/2" x 4 1/2"  
 2-1 1/2" x 1 1/2"

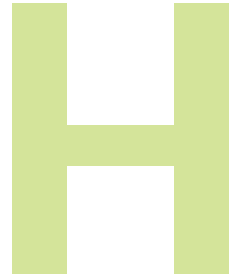
**Print:**

1-2 1/2" x 10 1/2"  
 4-2 1/2" x 4 1/2"  
 2-1 1/2" x 2 1/2"

Press toward Print except some ECTs then follow direction of arrows.

# Spell it with fabric

*Moda*



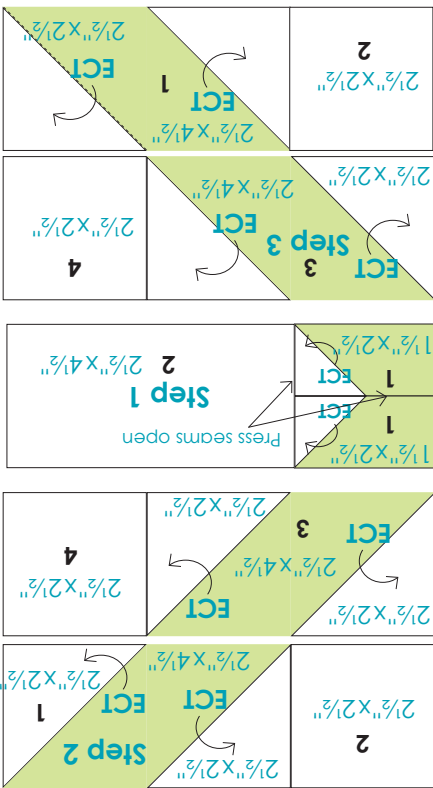
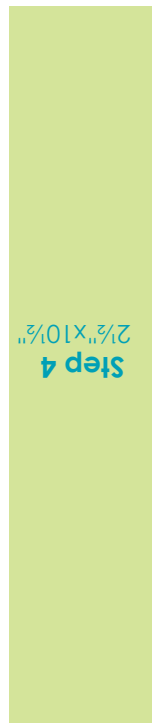
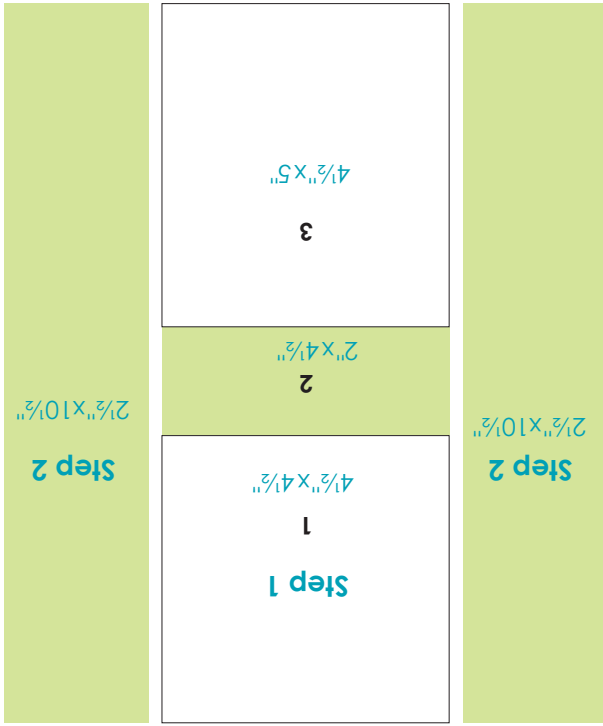
**Parts** — include seam allowance

**Background:**  
 1-4 1/2" x 4 1/2"  
 1-4 1/2" x 5"  
 1-2" x 4 1/2"

**Print:**

2-2 1/2" x 10 1/2"  
 1-2" x 4 1/2"

Press toward Print except some ECTs then follow direction of arrows.



# Moda Spell it with Fabric



**Parts** — include seam allowance

**Background:**

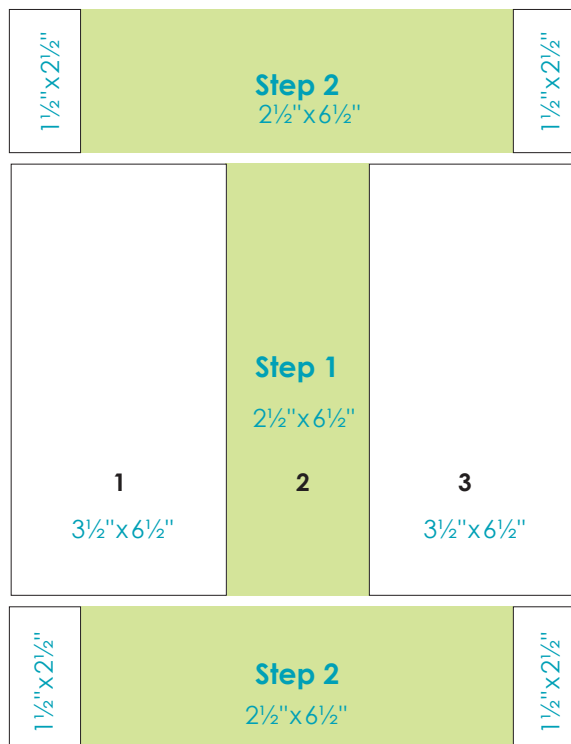
4-1½" x 2½"

2-3½" x 6½"

**Print:**

3-2½" x 6½"

Press toward Print except some ECTs then follow direction of arrows.



# Moda Spell it with Fabric



**Parts** — include seam allowance

**Background:**

1-6½" x 6½"

1-2½" x 4½"

2-2½" x 2½"

**Print:**

2-2½" x 8½"

1-2½" x 2½"

Press toward Print except some ECTs then follow direction of arrows.

