

moda



50" x 60"

Murmuration

Featuring Lulu by Chez Moi

moda

Murmuration by Chez Moi

Pattern Notes

Finished Quilt Size: 50" x 60"

Finished Block Size: 8" x 8"

Backing Required: 3½ yards

Batting Required: 58" x 68" piece of batting

Cutting Instructions

(WOF = Width of Fabric, HST = Half Square Triangle, QST = Quarter Square Triangle)

Lulu Layer Cake (33580LC): 1 Layer Cake

- Gather Dark Print (*blue*) 10" Layer Cake squares. From the assorted print squares, cut the following for cornerstones:
 - (32) 2½" squares.
- Gather Light Print (*cream*) 10" Layer Cake squares. From the assorted print squares, cut the following for blocks:
 - (32) 2½" squares.
- Gather Medium Print (*red and orange*) 10" Layer Cake squares. From the assorted print squares, cut the following for blocks:
 - (32) sets of (2) matching 2½" x 4½" rectangles. Quantity of rectangles should total (64).
- Gather the remaining Light, Medium and Dark 10" Layer Cake squares. From the assorted prints, cut the following for the focal fabric in each block:
 - (32) 4½" squares.



Dark Blue Sashing: (1660 74): ¾ yard

- Cut (4) 2½" x WOF strips. Subcut (22) 2½" x 6½" rectangles for sashing.



Light Blue Sashing: (1660 75): ¾ yard

- Cut (4) 2½" x WOF strips. Subcut (20) 2½" x 6½" rectangles for sashing.



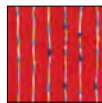
Background & Cream Sashing (1660 86): 1¾ yards

- Cut (2) 12½" x WOF strips. Subcut the following:
 - (4) 12½" squares; cut each square twice diagonally to

make (16) QST for side setting triangles. Please note that (2) QST will be unused.

- (2) 6½" squares; cut each square once diagonally to make (4) HST for corner setting triangles.

- Cut (7) 2½" x WOF strips for borders.
- Cut (4) 2½" x WOF strips. Subcut (22) 2½" x 6½" rectangles for sashing.



Binding (33586 14): ½ yard

- Cut (6) 2¼" x WOF strips for binding.

Assembly:

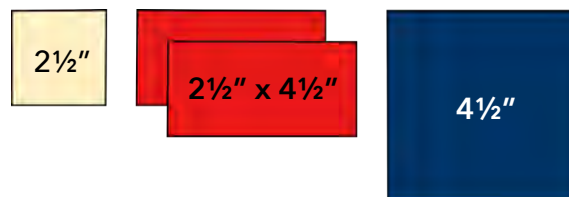
Making the Block:

8" x 8" finished size

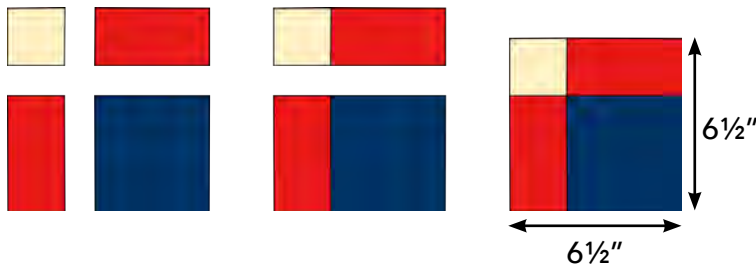
Step 1. Prepare for block assembly by mixing and matching fabric prints to create block fabric sets. For each block fabric set gather the following:

- (1) light print print 2½" square (cream).
- (2) matching medium print 2½" x 4½" rectangles (red/orange).
- (1) randomly selected 4½" square either from a light, medium or dark fabric print.

Step 2. Continue creating block fabric sets until there are (32) block fabric sets. Creating block fabric sets before sewing ensures that fabric prints are mixed thoroughly and evenly distributed throughout the blocks.



Step 3. Lay out the gathered pieces as shown. Sew together, pressing seams to the 2½" x 4½" print fabric rectangles. Completed block unit should measure 6½" x 6½" unfinished.



Step 4. Repeat to create (32) uniquely colored block units measuring $6\frac{1}{2}" \times 6\frac{1}{2}"$ unfinished.

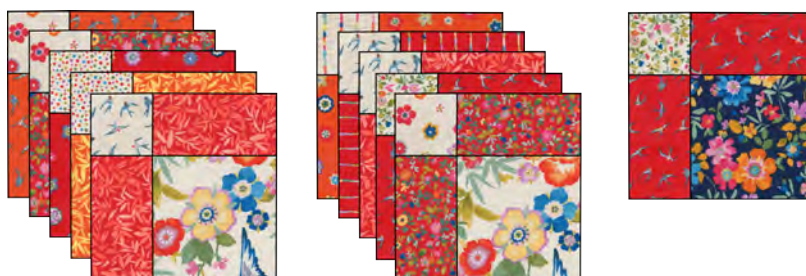
Block Unit Examples

Create (32) Block Units



Step 5. Divide block units by the quilt section. Choose (11) block units for the top of the quilt, (10) block units for the middle of the quilt and (11) block units for the bottom of the quilt. *(Please note: The top of the quilt uses the cream sashing rectangles, the middle of the quilt uses the light blue sashing rectangles and the bottom of the quilt uses dark blue sashing rectangles.)*

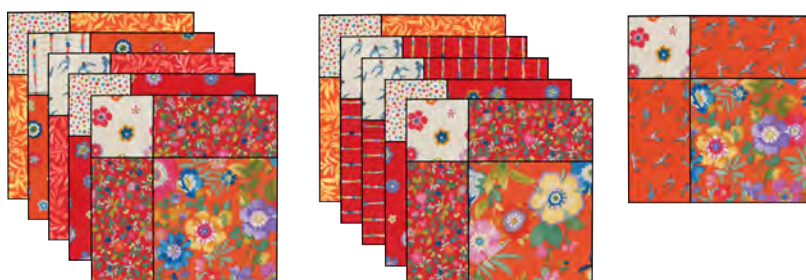
Top (11) Blocks



Middle (10) Blocks



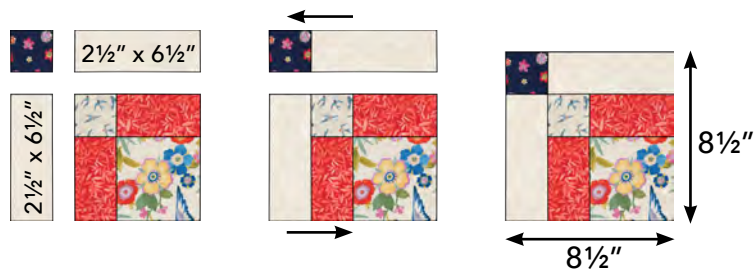
Bottom (11) Blocks



Step 6. Gather block units chosen for the top of the quilt, (11) $2\frac{1}{2}"$ dark print (blue) squares and (22) $2\frac{1}{2}" \times 6\frac{1}{2}"$ cream sashing rectangles.

Step 7. Place (1) $2\frac{1}{2}"$ dark print square and (2) $2\frac{1}{2}" \times 6\frac{1}{2}"$ cream sashing rectangles around each block unit. Assemble as shown, pressing toward the block unit and the $2\frac{1}{2}"$ dark print square.

Step 8. Repeat to create (11) uniquely colored blocks for the top of the quilt. Blocks should measure $8\frac{1}{2}" \times 8\frac{1}{2}"$ unfinished.



Top Block Examples

Create (11) Blocks



Step 9. Gather block units chosen for the middle of the quilt, (10) 2 1/2" dark print (blue) squares and (20) 2 1/2" x 6 1/2" light blue sashing rectangles.

Step 10. Assemble using the same techniques described in the Step 7.

Step 11. Repeat to create (10) uniquely colored blocks for the middle of the quilt. Blocks should measure 8 1/2" x 8 1/2" unfinished.



Middle Block Examples

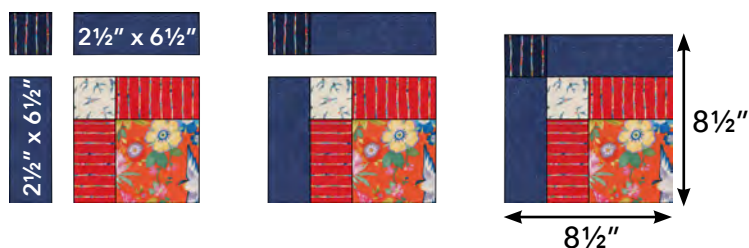
Create (10) Blocks



Step 12. Gather block units chosen for the bottom of the quilt, (11) 2 1/2" dark print (blue) squares and (22) 2 1/2" x 6 1/2" dark blue sashing rectangles.

Step 13. Assemble using the same techniques described in the Step 7.

Step 14. Repeat to create (11) uniquely colored blocks for the bottom of the quilt. Blocks should measure 8 1/2" x 8 1/2" unfinished.



Bottom Block Examples

Create (11) Blocks



Assembling the Quilt Top:

Step 15. The quilt top center is assembled using a diagonal setting. Place blocks on point in a 4 x 5 grid. Place blocks using cream/sashing fabric at the top of the quilt, blocks using light blue sashing in the middle of the quilt and blocks using dark blue sashing at the bottom of the quilt. Arrange blocks for even color and print distribution.

Step 16. Next, place 12½" background QST around the perimeter of the quilt as side setting triangles as shown. Place 6½" background HST at the four corners of the quilt as corner setting triangles as shown.

Step 17. Sew the quilt top center together in diagonal rows, alternating the direction in which you press the seams in each row.

Step 18. Sew diagonal rows together to complete the quilt top center. Quilt top should measure approximately 46½" x 56½" unfinished (size may vary due to the diagonal quilt setting).

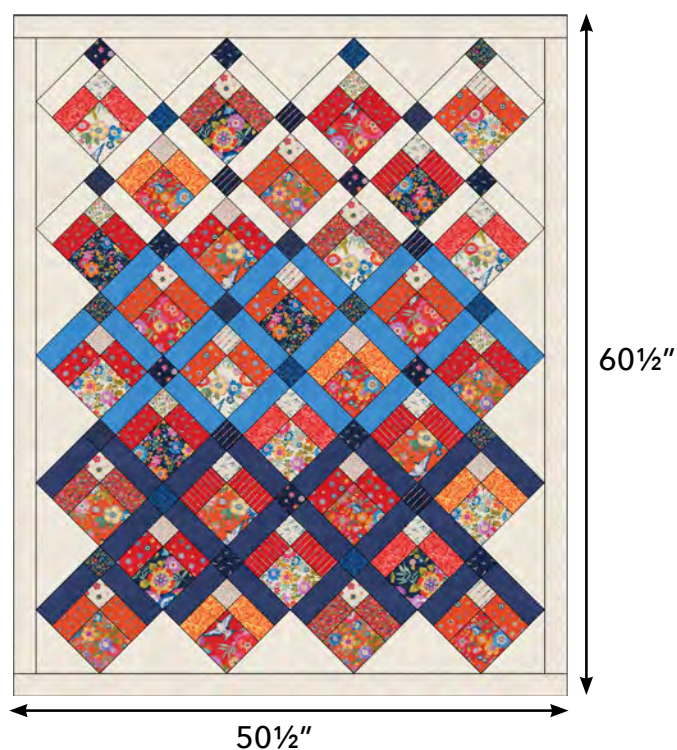


Assembling the Quilt Top:

Step 19. Sew the (7) $2\frac{1}{2}$ " x WOF background border strips together end to end using diagonal seams to create one long strip. Trim seams to a $\frac{1}{4}$ " and press.

Step 20. Measure the height of the quilt top center in multiple places and average the measurements. Trim (2) side border strips using the quilt's actual measurements. Attach the side border strips using a $\frac{1}{4}$ " seam. Press outward and away from the quilt top center.

Step 21. Repeat measuring and trimming techniques described in Step 20 to trim and attach the top and bottom border strips to complete the quilt top. The quilt top should measure approximately $50\frac{1}{2}$ " x $60\frac{1}{2}$ " unfinished.



Step 22. Quilt and Bind as desired.



moda

Murmuration

Featuring *Lulu* by *Chez Moi*

moda

To Chez Moi, Lulu is the name of a magical garden filled with lush flowers that rival its many beautiful birds. Vivid shades of Geranium and Clementine radiate against Navy and Linen to create a collection that is pulsing with energy, and just a bit exotic.

Fabric Requirements

Layer Cake

33580LC

1 Layer Cake



Dark Blue Sashing

1660 74

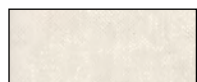
$\frac{3}{8}$ yard



Light Blue Sashing

1660 75

$\frac{3}{8}$ yard



Background & Cream Sashing

1660 86

$1\frac{3}{4}$ yards



Binding

33586 14

$\frac{1}{2}$ yard



Backing Required: $3\frac{1}{2}$ yards

Batting Required: 58" x 68" piece of batting

moda
FABRICS + SUPPLIES

MY.MODAFABRICS.COM