

moda



57 1/2" x 64"

Kitty Corn

Featuring

Kitty Corn

by

URBANCHKS

moda

Kitty Corn by URBAN CHIKS

Pattern Notes

Finished Quilt Size: 57 ½" x 64"

Finished Block Size: 5" x 5"

Backing Required: 4 yards

Batting Required: 65 ½" x 72" piece of batting

Cutting Instructions

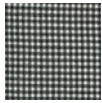
(WOF = Width of Fabric, FQ = Fat Quarter)

Fabric Requirements



Background: (31175-12): 2 yards

- Cut (9) 5" x WOF strips. Subcut (72) 5" squares for background.
- Cut (2) 7 ¾" x WOF strips. Subcut (9) 7 ¾" squares; cut each square twice diagonally to make (36) QST for side setting triangles. **(Please note: 2 QST will be unused.)**
- Cut (1) 4" x WOF strip. Subcut (2) 4" squares; cut each square once diagonally to make (4) HST for corner setting triangles.



Binding: (31177 17): ⅝ yard

- Cut (7) 2 ¼" x WOF strips for binding.

(Please note: Kitty Corn Print Fabric cutting for 9-Patch Blocks differ between the Kitty Corn Quilt Kit and the Free Download Project Sheet on the Free Patterns page on Moda Fabric's website. Find the cutting instructions listed below that apply to your quilt project and cut as instructed. The Background and Binding cutting instructions remain the same for both project types.)

For the Kitty Corn Quilt Kit Pattern:

From the Precut 2" x WOF Strips

- (4) 2" x WOF strips from each of (24) prints is included with the Kitty Corn Quilt Kit. First, cut the following from each of (24) prints using the WOF strips provided:
 - o (2) 2" x 18" strips. Label as Focal Fabric.
 - o (1) 2" x 9" strip. Label as Focal Fabric.
 - o (1) 2" x 18" strip. Label as Accent Fabric.
 - o (2) 2" x 9" strips. Label as Accent Fabric.
- Second, from the remainder of (6) prints cut the following:
 - o (2) 2" x 18" strips. Label as Focal Fabric.
 - o (1) 2" x 9" strip. Label as Focal Fabric.
- Last, from the remainder of (6) prints cut the following:
 - o (1) 2" x 18" strip. Label as Accent Fabric.
 - o (2) 2" x 9" strips. Label as Accent Fabric.

For the Free Download Pattern:



9-Patch Blocks: 1 FQ Bundle (31170AB)

- From each of (25) Fat Quarters, cut the following using Cutting Chart 1:
 - (2) 2" x 18" strips. Label as Focal Fabric.
 - (1) 2" x 9" strip. Label as Focal Fabric.
 - (1) 2" x 18" strip. Label as Accent Fabric.
 - (2) 2" x 9" strips. Label as Accent Fabric.
- From the remainder of (5) Fat Quarters, repeat the cutting instructions above. Be sure to label strips as either Focal Fabric or Accent Fabric. Reference Cutting Chart 2.

Cutting Chart 1

2" x 18"	2" x 18"	2" x 18"	2" x 9"	2" x 9"	
			2" x 9"	2" x 9"	

Cutting Chart 2

2" x 18"	2" x 18"	2" x 18"	2" x 9"	2" x 9"	2" x 18"	2" x 18"	2" x 18"	2" x 9"	
			2" x 9"	2" x 9"				2" x 9"	

Assembly:

Unless otherwise noted, all seams are a 1/4".

Making the Strip Sets:

Step 1. Begin 9-Patch Block assembly by pairing print fabrics together to make 9-Patch Block Colorways. Pair:

- (2) 2" x 18" Focal Fabric strips.
- (1) 2" x 18" Accent Fabric strip.
- (2) 2" x 9" Accent Fabric strips.
- (1) 2" x 9" Focal Fabric strips.

2" x 18"

Focal Fabric

2" x 18"

Accent Fabric

2" x 18"

Focal Fabric

2" x 9"

Accent Fabric

2" x 9"

Focal Fabric

2" x 9"

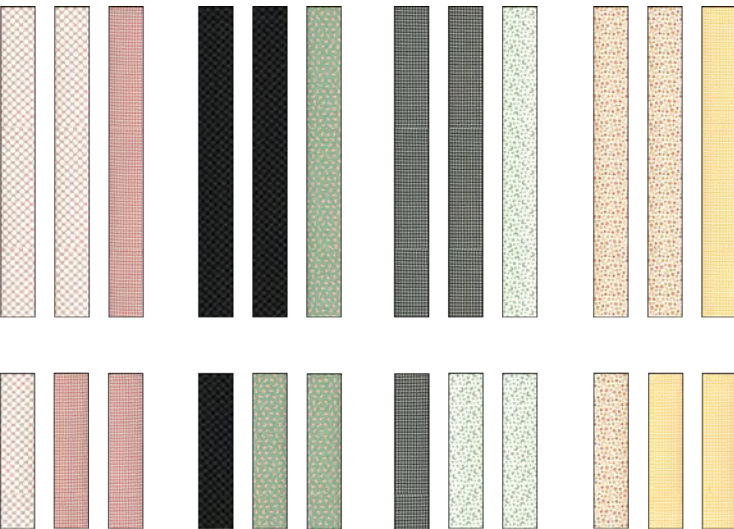
Accent Fabric

Focal

Accent Fabric

Step 2. Repeat to make (30) fabric sets using the list above to gather cut strips, each containing a Focal and Accent Fabric. Aim to create several unique and fun fabric combinations. It is recommended to create all fabric sets before sewing begins to eliminate repeat fabric pairs, or using the same print within (1) 9-Patch Block.

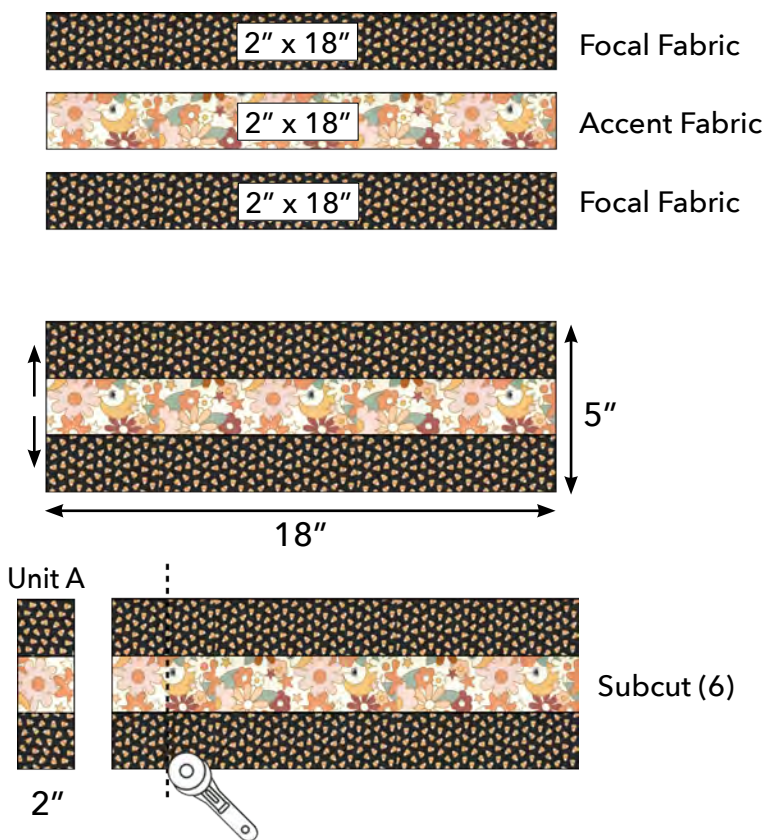
Fabric Set Examples



Step 3. Choose (1) fabric set to begin creating strip sets.

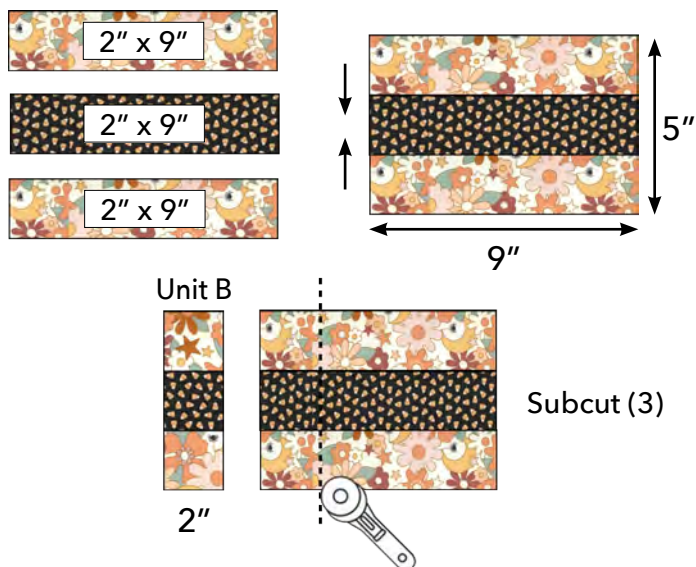
Step 4. Sew (1) 2" x 18" Focal Fabric strip onto either side of (1) 2" x 18" Accent Fabric strip. Press toward the Focal Fabric. The strip set will measure 5" x 18" unfinished.

Step 5. Subcut (6) 2" x 5" units from the strip set created in Step 4. Label as Unit A.



Step 6. Continue creating strip sets using the same fabric set. Sew (1) 2" x 9" Accent Fabric strip onto either side of (1) 2" x 9" Focal Fabric strip. Press toward the Focal Fabric. The strip set will measure 5" x 9" unfinished.

Step 7. Subcut (3) 2" x 5" units from the strip set created in Step 6. Label as Unit B.



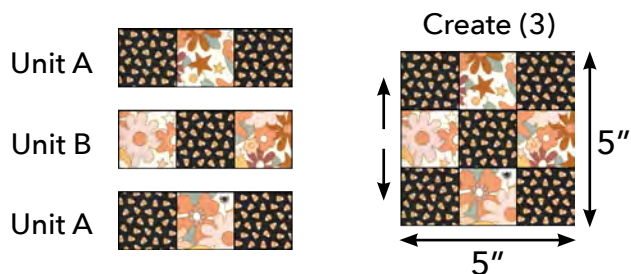
Step 8. Repeat the strip set assembly and subcutting process (30) times. Keep Unit A pieces and Unit B pieces grouped together by fabric set colorway for organization. (There should be (6) Unit A and (3) Unit B for each of (30) fabric sets.)

Making the 9-Patch Blocks:

Step 9. Choose (1) Unit A/B fabric set to begin creating 9-Patch Blocks.

Step 10. Sew (1) Unit A onto the top and bottom of Unit B as shown. Arrows indicate pressing instructions.

Step 11. Repeat (3) times to create (3) identical 9-Patch Blocks measuring 5" x 5" unfinished.



Step 12. Repeat to create (3) identical 9-Patch Blocks for each of (30) Unit A/B fabric sets, to total (90) 9-Patch Blocks. All 9-Patch Blocks should measure 5" x 5" unfinished. 9-Patch Block examples are shown below.

9-Patch Block Examples

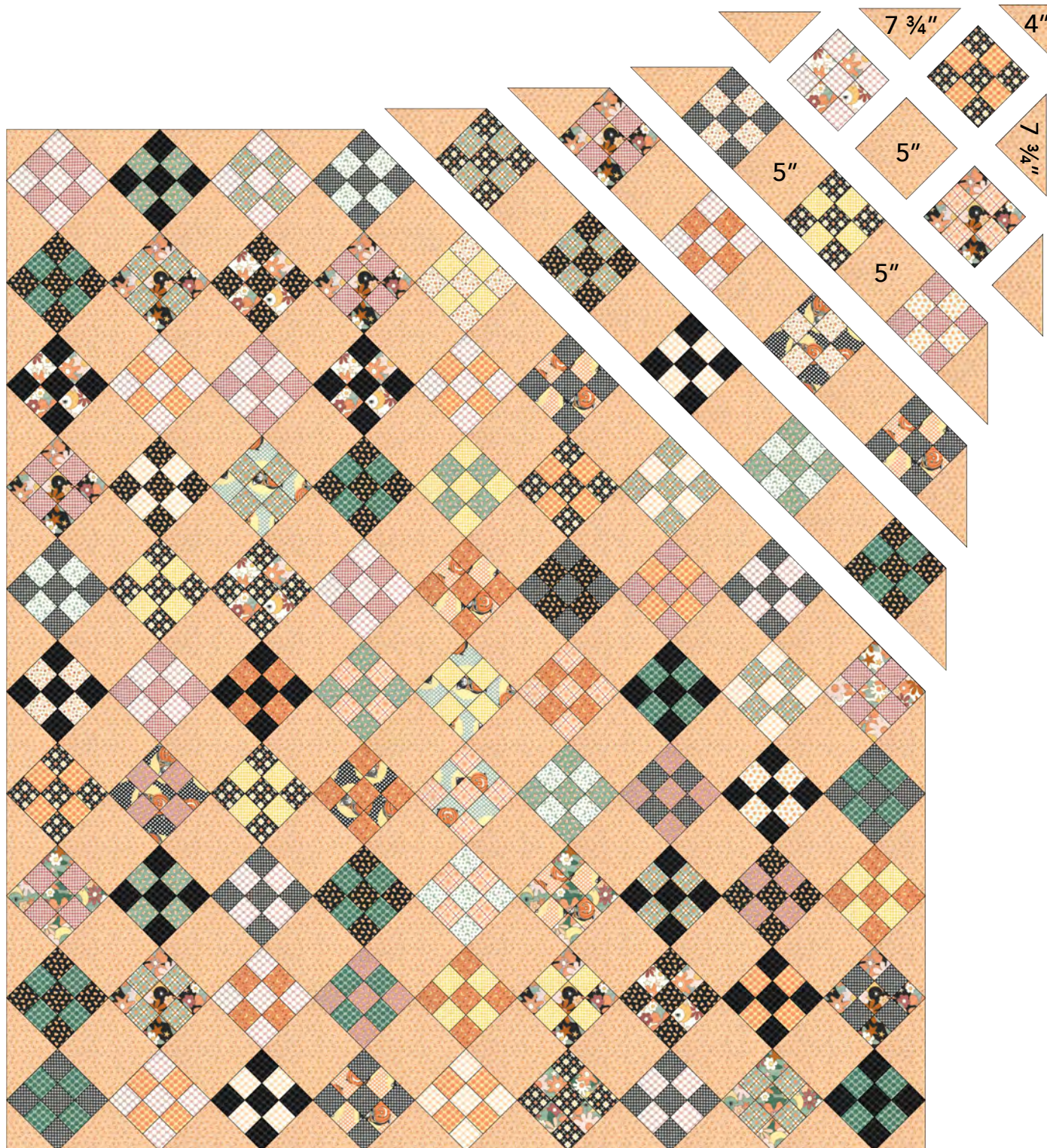


Quilt Assembly:

Step 13. Arrange (90) 9-Patch Blocks in a 9 x 10 diagonal grid, placing 5" background fabric squares as shown. Place 7 3/4" background fabric QST along the outside edges of the quilt as side setting triangles. Place 4" background fabric HST at the four corners of the quilt as corner setting triangles.

Step 14. Begin sewing the quilt together in diagonal rows as shown, pressing toward the background fabric squares and setting triangles.

Step 15. Sew diagonal rows together to complete the quilt top. The side and corner setting triangles have been slightly oversized to allow for trimming. Trim the outside edges of the quilt top so that the points of the outermost 9-Patch Block are a 1/4" away from the outside edges of the quilt top to allow for a seam allowance. Once trimmed, the quilt top should measure approximately 58" x 64 1/2" unfinished. Press and set aside for future steps.



Preparing the Cat Panel:

(Note: The following directions are for fusing and machine applique. Follow the manufacturer's instructions for the fusible web product you are using. If you prefer to hand applique, or use flip and fuse methods, proceed using your chosen method.)

Step 16. Trim away the bottom most illustrations from the panel. Only the large Cat illustration will be used in this quilt project.

Step 17. For best results, spray the trimmed panel with spray starch until soaked. Allow the panel to air dry, then press. This will make placement, fusing and machine applique much easier.

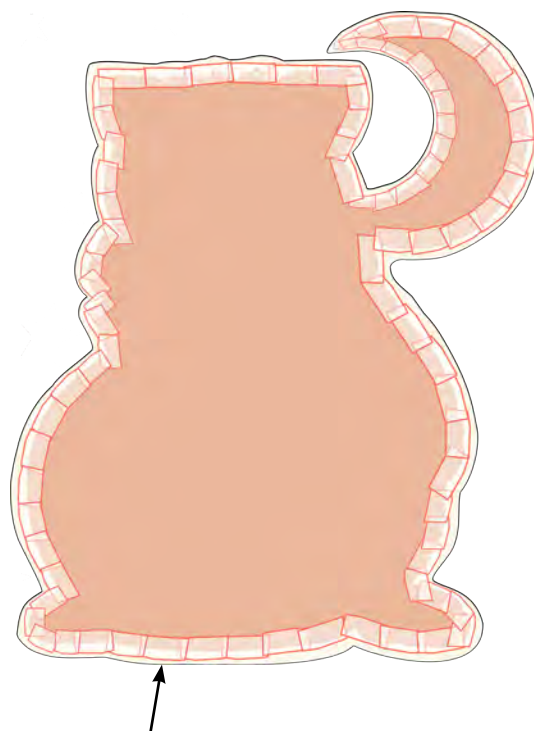
Step 18. Roughly cut out the Cat illustration leaving a generous ($\frac{1}{2}$ " - $\frac{3}{4}$ ") seam allowance around the entire illustration. The seam allowance is shown using a dashed line on the panel diagram. *(Note: Applique can be completed including the spider, spider web and cream background behind the spider/web. If you choose to include the spider, spider web and cream background behind the spider/web, more 9-Patch Blocks will be covered by the panel during assembly. Or you may opt to exclude the spider from the quilt project completely as shown in the diagrams.)*

Step 19. Cut fusible web into small strips (approx. 2" x 4") to position around the edge of the prepared Cat illustration.

Step 20. On the wrong side of the panel, place fusible web strips around the edge of the entire Cat illustration. Fusible web strips should be cut and trimmed as needed to fit around the curves and shape of the Cat illustration. Make sure that the fusible web strips extend into the seam allowance. This is to ensure that the cut edge of the panel will be securely bonded to the quilt top before machine appliqueing.



Roughly cut out the Cat illustration leaving a generous ($\frac{1}{2}$ " - $\frac{3}{4}$ ") seam allowance around the entire illustration.



Make sure that the fusible web strips extend into the seam allowance.

Step 21. Following manufacturer's instructions, fuse all strips into place. Then remove the paper from the glue side of each fusible web strip.

Step 22. With sharp scissors, trim the panel to remove the "seam allowance" surrounding the Cat illustration.

Step 23. Position the prepared panel on the pieced quilt top as shown. Once you are satisfied with the placement of the Cat illustration, carefully fuse the panel in place on the quilt top. You may use an applique pressing sheet or freezer paper to protect your ironing surface from any excess fusible web.

Step 24. Machine applique the Cat illustration to the quilt top using the decorative stitch and thread color of your choice. *(Note: To reduce bulk and prevent shadowing, we suggest trimming away some of the blocks behind the Cat illustration when machine applique is completed.)*



Step 25. Sandwich the quilt top, batting and backing. Baste quilt layers together.

Step 26. Quilt as desired.

Step 27. Bind quilt using (7) 2¼" x WOF strips.



Kitty Corn

Featuring
Kitty Corn
by
URBANCHIKS

moda

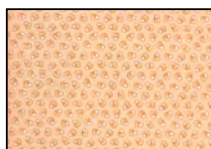
Black cats and spiders, a full moon and a pumpkin. Add a retro-inspired color palette with funky florals, candy corn, cool polka dots and plaids, and it's Halloween with the UrbanChiks.

The nine-patch quilt is pieced, and the Kitty Corn panel is cut and applied to the quilt by machine, or by hand. Quilts, home décor and accessories haven't been this much fun in years.

Fabric Requirements*



9-Patch Blocks
31170AB
1 Fat Quarter Bundle



Background
31175 12
2 yards



Binding
31177 17
5/8 yard



31178 11P
1 Panel

Backing Required: 4 yards

Batting Required: 65 1/2" x 72" piece of batting

Fusible Web Required for Applique

**The Fat Quarter Bundle fabric requirement shown above applies to the project sheet. The Kitty Corn Quilt Kit includes (4) 2" x WOF strips for each of (24) print fabrics. The background, binding, and panel requirements remain the same for both quilt projects.*



MYMODAFABRICS.COM
PS31170 SUGGESTED RETAIL \$10.00