

54" x 69"



GILDED

BY ALLI K DESIGN AK

Cut and label pieces as shown below.



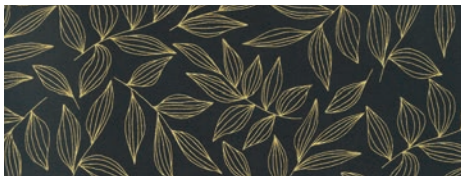
11530 12

- A-(1) 5" x 5" Square for Star Center
B-(8) 2 3/4" x 2 3/4" Squares for Star Points (Geese)



11533 15M

- C-(4) 2 3/4" x 5" rectangles for Star Geese
D-(8) 2 3/4" x 2 3/4" Sqs. for Star Geese Corners
E-(2) 2" x 9 1/2" Strips for Side Borders
F-(2) 2 3/4" x 5" for hearts



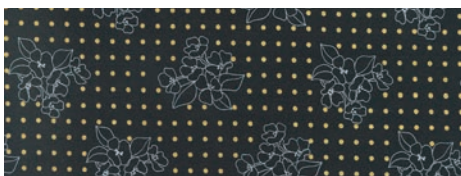
11532 16M

- G-(1) 8" x 14" for Hearts border
H-(12) 1 3/4" x 1 3/4" Squares for heart points
I-(6) 2 3/4" x 2 3/4" Squares for heart points
J-(1) 5" x 5" Square for Star Center
K-(8) 2 3/4" x 2 3/4" Squares for Star Points (Geese)



11534 15M

- L-(6) 2 3/4" x 5" for hearts
M-(1) 12 1/2" x 9 1/2"



11534 16M

- N-(4) 1 5/8" x 1 5/8" Squares for heart points
O-(2) 2 3/4" x 2 3/4" Squares for heart points
P-(1) 8" x 5" for Heart border

ARE BETTER BELIEVE LOVE BEAUTIFUL M
BLOOM MADE WITH LOVE DREAM BE BRAV
HANGE BE KIND HAPPINESS GROW JOY
N RISE BE THE GOOD IMAGINE GO INSP
VE BEAUTIFUL LOVE CREATE BEYOND BE

11536 15M

- Q-(4) 2 3/4" x 5" rectangles for Star Geese
R-(8) 2 3/4" x 2 3/4" Sqs. for Star Geese Corners
S-(1) 2" x 9 1/2" Strips for Side Border *
T-(1) 26" x 9 1/2" for Side Border *
***** CUT DIRECTIONALLY SO TEXT RUNS CORRECTLY/HORIZONTALLY**



11530 15M

- U-(1) 12 1/2" x 14"



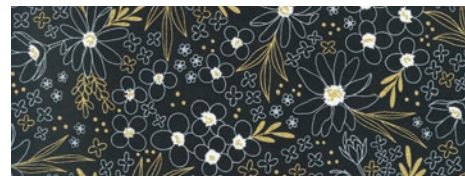
11530 16M

- V-(1) 12 1/2" x 14"



11531 21M

- W-(1) 12 1/2" x 9 1/2"



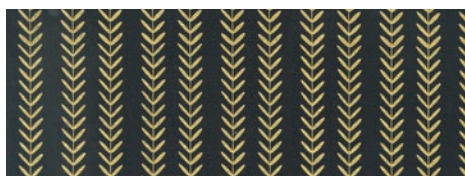
11531 22M

- X-(1) 12 1/2" x 9 1/2"



11535 15M

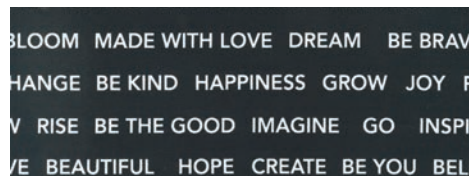
- Y-(1) 12 1/2" x 9 1/2" *
***** CUT DIRECTIONALLY SO STRIPES ARE VERTICAL LIKE ABOVE**



11535 16M

Z-(1) 12½" x 9½" *

*** CUT DIRECTIONALLY SO STRIPES ARE VERTICAL LIKE ABOVE



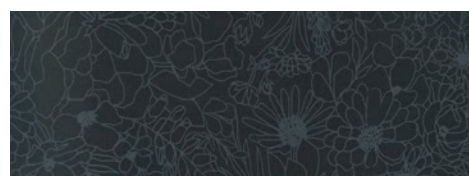
11536 12

AA(1) 24½" x 9½" *

*** CUT DIRECTIONALLY SO TEXT RUNS CORRECTLY/HORIZONTALLY

Binding: (7) 2½" strips **

*** CUT SO STRIPE LOOKS NICE



11533 14



11537 11M; 11537 14M

CC-BOTH PANELS SAME, you need all 8 'blocks'

Hearts: 12½" x 9½"

Hope/Love: 12½" x 18½"

BB-Cut (6) 3½" x WOF Strips. Join end to end, then subcut:

(2) 3½" x 63½" Side Borders

(2) 3½" x 54½" Top/Bottom Borders



2 ¾"



Align Corners

Draw a diagonal line on the back of a 2 ¾" dark square. Place the square, right sides together, on a 2 ¾" x 5" background rectangle. Align edges. Stitch on the drawn line.



Trim dark square ¼" from the sewn line leaving background fabric.



Press toward corner



Repeat with 2nd dark square



Unit should measure 2 ¾" x 5" with seams

Assemble as shown



Add 2 side Pieces- E

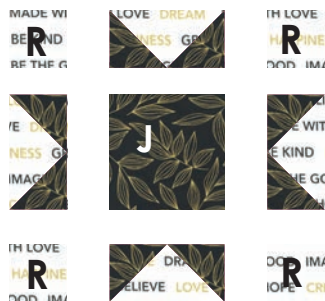


Sewn Block: 12½" x 9½"

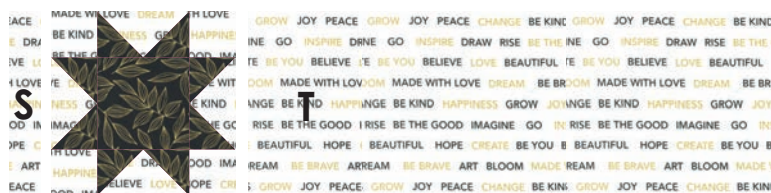
Make 4 flying geese units following directions above.



Assemble as shown



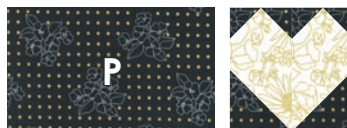
Add 2 side Pieces- S and T



Sewn Block:
36½" x 9½"

Make 1 heart in fabric shown

On an F piece sew off corners using N. Repeat on additional F. Press away from Background. Sew off bottom corner using O. Repeat and join 2 units together to form heart.



Sewn Block:
12½" x 5"

Add P to the heart paying attention to which side it is added to.

Following directions above
Make 3 hearts in fabric shown

6-L
12-H
6-I



Join hearts together.



Sewn Block:
12½" x 14"

Add G to the heart paying attention to which side it is added to.

Layout and piece together in the following units.



8

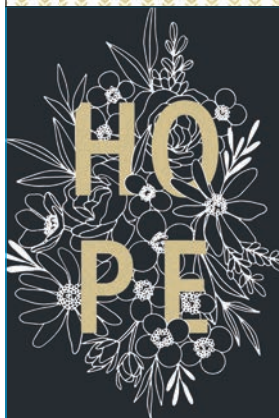
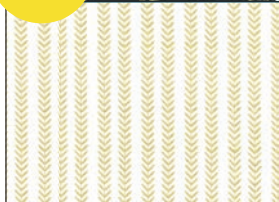
3

GROW JOY PEACE CHANGE BE KIND JOY PEACE CROW JOY PEACE CHANGE BE KIND
 INSPIRE GO INSPIRE DRAW RISE BE THE GOOD INSPIRE DRAW RISE BE THE GOOD
 YOU BELIEVE LOVE BEAUTIFUL YOU BELIEVE LOVE BEAUTIFUL YOU BELIEVE LOVE BEAUTIFUL
 MADE WITH LOVE DREAM BE BRAVE MADE WITH LOVE MADE WITH LOVE DREAM BE BRAVE
 BE KIND HAPPINESS GROW JOY BE KIND HAPPINESS GROW JOY BE KIND HAPPINESS GROW JOY
 BE THE GOOD IMAGINE GO INSPIRE BE THE GOOD IMAGINE GO INSPIRE BE THE GOOD IMAGINE
 BEAUTIFUL HOPE CREATE BE YOU UTIFUL HOPE CREATIFUL HOPE CREATE BE YOU BEL
 REAM BE BRAVE ART BLOOM MADE BE BRAVE ART IM BE BRAVE ART BLOOM MADE WI
 GROW JOY PEACE CHANGE BE KIND JOY PEACE CROW JOY PEACE CHANGE BE KIND

7



6



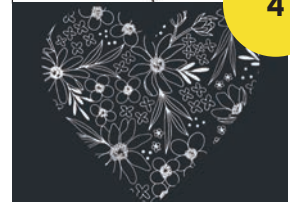
1



2



4



MAKE SURE YOU GET (1) HOPE AND (1) LOVE IN THE MIDDLE HERE AND NOT THE SAME BLOCK!!

7

5



8



GILDED

BY ALLI K DESIGN & CO.

MATERIALS NEEDED:

FAT EIGHTH



11530 12

FAT EIGHTH



11534 16M

FQ



11532- 16M

FQ



11530 16M

FQ



11531 22M

FQ



11535 16M

FQ



11533 15M

FQ



11534 15M

FQ



11530 15M

FQ



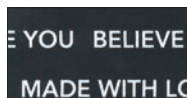
11531 21M

FQ



11535 15M

1/3 YARD



11536 12

2/3 YARD



11533 14

1/2 YARD



11536 15M

2/3 YARD - PANEL



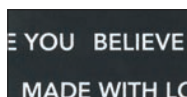
11537 11M

2/3 YARD - PANEL



11537 14M

5/8 YARD



11536 12

moda
FABRICS + SUPPLIES®

modafabrics.com

Follow @modafabrics on social media for more fabrics and inspiration, and tag your projects #ShowMeTheModa so we can see & share your progress!

Check for any pattern corrections on the Moda Fabrics website:
modafabrics.com/moda-pattern-corrections

SUGGESTED RETAIL: \$6.00