

# Chains

Quilt is 74" x 74".

## Supplies

**Blocks (lights):**  
12 assorted Fat Quarters\*

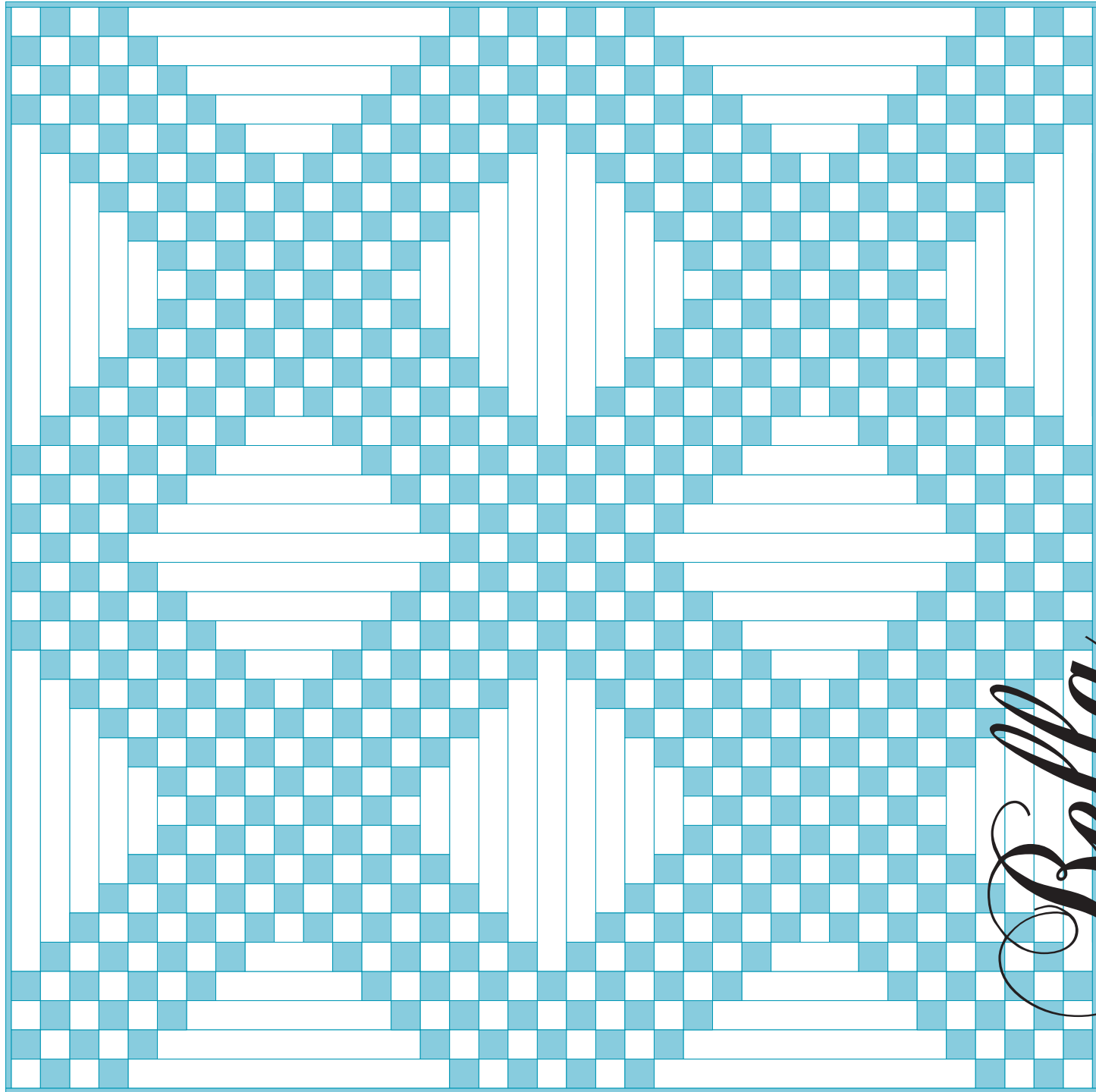
**Block (light):** 1 yard

**Blocks (darks):**  
35-2½" x width of fabric  
(a Jelly Roll is a great start!)

**Binding:** ⅔ yard

**Backing:** 4¾ yards

\*Fat Quarter=18" x 22"



**Chains**  
Quilt is 74" x 74".

**12 pack**  
*Which colors will you choose?*

*Bella*  
**Solids™**  
*moda*

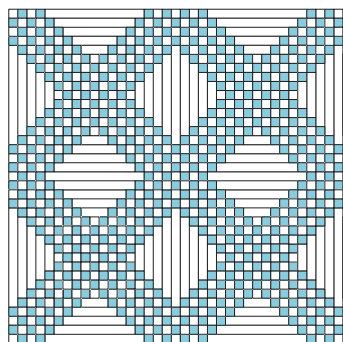
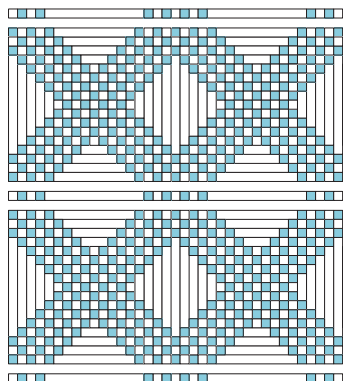
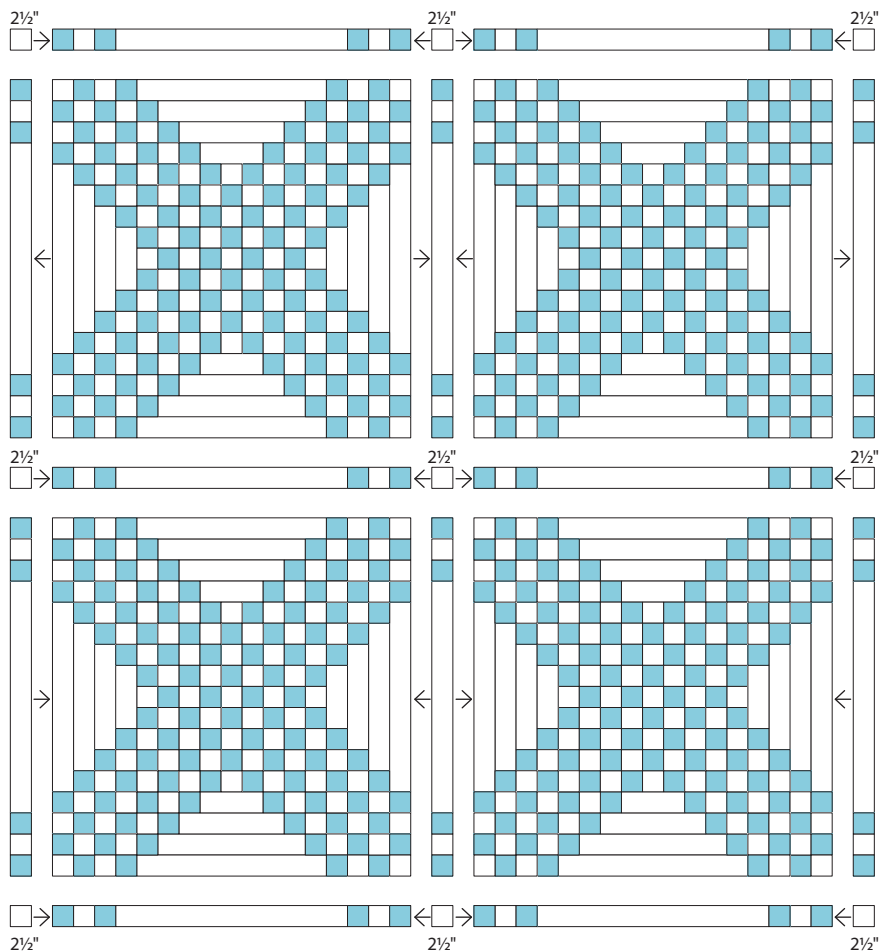


*moda*

MODAFABRICS.COM

BSPK1307 — SUGGESTED RETAIL \$6.00

**3** Assemble the quilt in rows as shown. Combine the rows.  
Layer, quilt and bind.



*moda*

# Chains

Quilt is 74" x 74".

## Cutting

### Blocks (lights):

From EACH of the 12 assorted light Fat Quarters\* cut

6-2½" x 22" strips

You now have 84-2½" x 22" strips

Set aside 23-2½" x 22" strips

From 16 strips, cut 16-2½" x 18½"

From 16 strips, cut 16-2½" x 14½" and 32-2½" squares

From 16 strips, cut 16-2½" x 10½", 16-2½" x 6½" and 16-2½" squares

From 13 strips, cut 26-2½" x 11" strips

### Block (light): (1 yard)

1-22½" x width of fabric strip

From the strip, cut 17-2½" x 22½" strips

set aside 12 strips

From the remaining 5 strips, cut 10-2½" x 11" strips

2-2½" x width of fabric strips

From the strips, cut 5-2½" x 11" strips

### Blocks (darks):

From 35-2½" x width of fabric strips, cut 30-2½" x 22" strips,

40-2½" x 11" strips and 64-2½" squares

### Binding:

8-2½" x width of fabric strips.

Sew the strips end to end to make the binding.

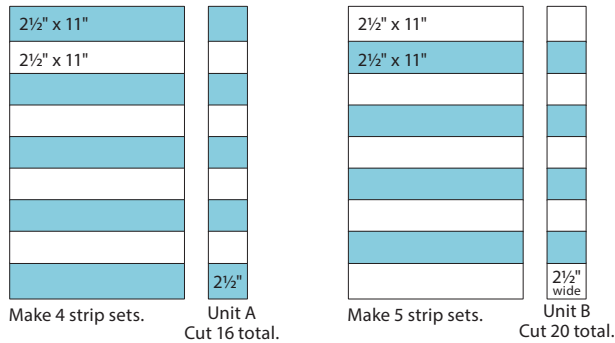
*moda*

## Construction

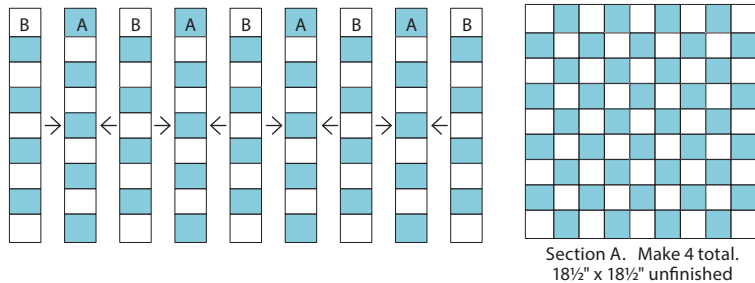
Use  $\frac{1}{4}$ " seams. Press in the direction of the arrows in the diagrams.

### 1 Blocks

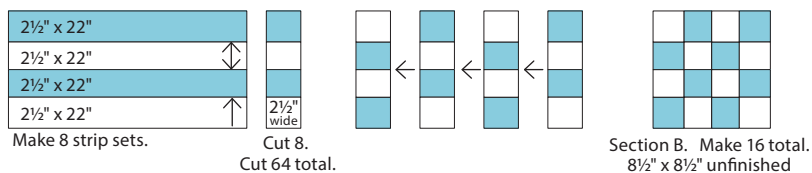
- (A) Sew  $5\text{-}2\frac{1}{2}$ " x 11" dark and  $4\text{-}2\frac{1}{2}$ " x 11" light strips together as shown. Make 4 strip sets. Press toward the dark strips. Cut  $4\text{-}2\frac{1}{2}$ " wide units from EACH strip set, 16 units total, unit A. Sew  $4\text{-}2\frac{1}{2}$ " x 11" dark and  $5\text{-}2\frac{1}{2}$ " x 11" light strips together as shown. Make 5 strip sets. Press toward the dark strips. Cut  $4\text{-}2\frac{1}{2}$ " wide units from EACH strip set, 20 units total, unit B.



- (B) Sew 4-A units and 5-B units together to make section A. Make 4 total.



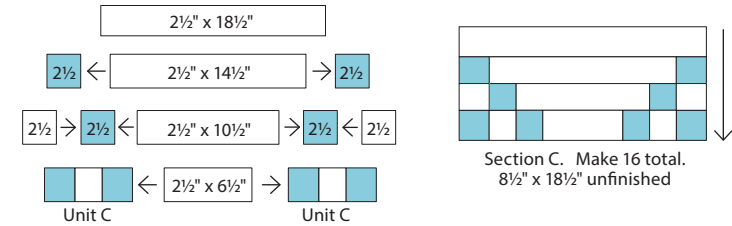
- (C) Sew  $2\text{-}2\frac{1}{2}$ " x 22" dark and  $2\text{-}2\frac{1}{2}$ " x 22" light strips together as shown. Make 8 strip sets. Press toward the dark strips. Cut  $8\text{-}2\frac{1}{2}$ " wide units from EACH strip set, 64 units total. Combine 4 units as shown to make section B. Make 16 total.



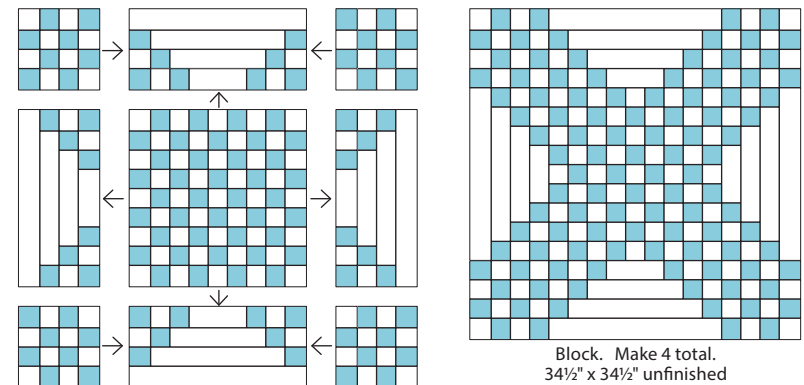
- (D) Sew  $2\text{-}2\frac{1}{2}$ " x 22" dark and  $1\text{-}2\frac{1}{2}$ " x 22" light strip together as shown. Make 7 strip sets. Press toward the dark strips. Cut  $8\text{-}2\frac{1}{2}$ " wide units from EACH strip set, 56 units total, unit C.



- (E) Assemble section C as shown. Make 16 total.



- (F) Sew 1-section A, 4-section Bs and 4-section Cs together as shown. Make 4 total.



### 2 Sashing

- Sew 2-unit Cs and  $1\text{-}2\frac{1}{2}$ " x  $22\frac{1}{2}$ " light strip together as shown. Make 12 total.

