



wild honey

Lella Boutique

Where wildflowers grow, the bees will follow. Here's to sun-drenched afternoons, meadows bursting with color, and air that hums with the happy buzz of bees. This collection is a love letter to nature's little pollinators, celebrating the beauty of untamed flowers, the delicate geometry of honeycomb, and a sprinkle of playful beekeeping buzzwords. With a palette as warm and golden as real honey, these sunlit hues bring a cheerful glow to any project. Let the sunshine in and get ready to buzz with creativity.

moda **NOVEMBER DELIVERY**





glendular secretion from honeybees used to feed larvae. TRO
honeybees forage for pollen & nectar from a variety of flowering trees
of removing honey from a frame using centrifugal force via a special extract
protecting the integrity of the honeycomb. DRONE: a male bee whose sole task
♥ ♥ ♥ BROOD BOX: an area of worker-made cells, typically found at the bottom o
ng bees getting ready to forage local pollen & nectar. ♥ ♥ ♥ ORIENTATION FLIGH
RM: a group of honeybees that split off from a strong, pre-existing mother colony

the sugary liquid crea
nce, & quality of a sou
ROYAL JELLY: a
r feed in the wild. Hon

called a "bee yard". (LARVAE: the immature fe
y bees in hives for the storage of honey, pollen, & egg
reduced. COLONY: a family unit of bees in a hive; a q
ment of the bee's muscular wings. BZZZZZZZZZZ: the fa
of sugar crystals forming in honey (also called "crystall
POLLEN: the fine, powdery substance consisting of
source of nectar being derived from a single pl
colony of bees. UNCAPPED BROOD
a worker bee as part of
formed by

queen, workers, &
famous "buzzing
lization"), that
microscopic ge
bees

wild honey

Lella Boutique



5250 11*



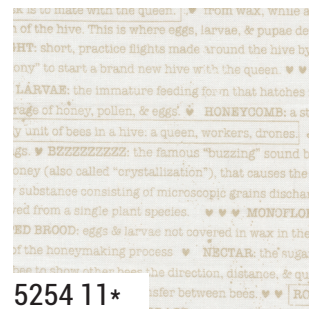
5253 21



5230 51*



5252 11*



5254 11*



5230 52*



5253 12*



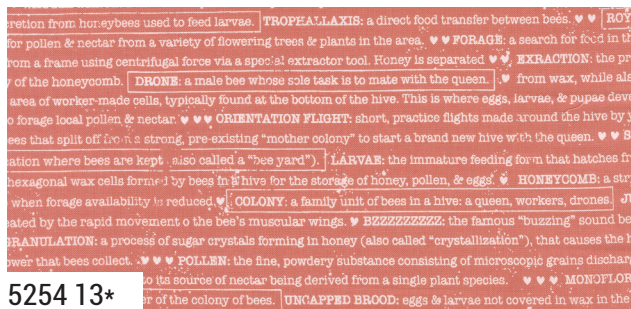
5252 12*



5230 53



5250 12*



5254 13*

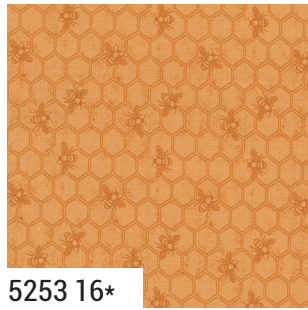


5251 13*

moda NOVEMBER DELIVERY

wild honey

Lella Boutique



5253 16*

ION: the process of removing honey from a frame us
x, while also protecting the integrity of the honey
pupae develop. ♥ ♥ BROOD BOX: an area of worker
the hive by young bees getting ready to forage local p
seen. ♥ ♥ SWARM: a group of honeybees that split of
hatches from an egg. ♥ ♥ APIARY: location where be
OMB: a structure containing rows of hexagonal wax
drones. ♥ ♥ JUNE GAP: a period in June when forage av
" sound bees make. The sound is created by the rag
causes the honey to become solid ♥ ♥ GRANULATION:
ns discharged from male parts of a flower that bees c
MONOFLORAL: a type of honey that has a distinct flav
wax in the hive. ♥ ♥ QUEEN BEE: the female reproduct
ed by the flower of a plant or
ce of forage. ♥ ♥ WAGGLE DA

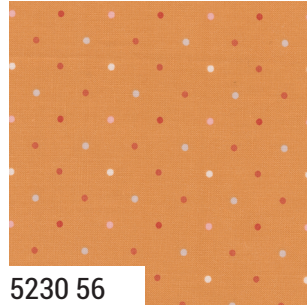
5254 16



5250 16*



5251 16*

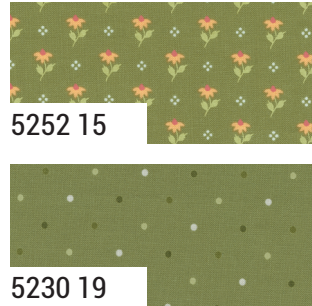


5230 56



5252 16

don from honeybees used to feed larvae. ♥ ♥ TROPHALI
pollen & nectar from a variety of flowering trees & p
n a frame using centrifugal force via a special extrac
the honeycomb. ♥ ♥ DRONE: a male bee whose sole tas
na of worker-made cells, typically found at the bottom
rage local pollen & nectar. ♥ ♥ ♥ ORIENTATION FLAG
that split off from a strong, pre-existing "mother col
on where bees are kept, also called a "bee yard").
agonal wax cells formed by bees in a hive for the stor
en forage availability is reduced. ♥ ♥ COLONY: a fami
ed by the rapid movement o the bee's muscular win
NULATION: a process of sugar crystals forming in ho
that bees collect. ♥ ♥ ♥ POLLEN: the fine, powdery
source of nectar being deriv
the colony of bees. ♥ ♥ UNCAPP



5252 15



5253 15



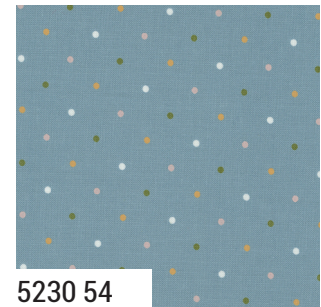
5251 15*



5251 14*

ants in the area. ♥ ♥ ♥ FORAGE: a search for food in th
or tool. Honey is separated ♥ ♥ ♥ EXTRACTION: the pr
k is to mate with the queen. ♥ ♥ ♥ from wax, while als
of the hive. This is where eggs, larvae, & pupae deve
HT: short, practice flights made around the hive by y
ny" to start a brand new hive with the queen. ♥ ♥ ♥ S
LARVAE: the immature feeding form that hatches fr
age of honey, pollen, & eggs ♥ ♥ HONEYCOMB: a stry
unit of bees in a hive: a queen, workers, drones. ♥ ♥ J
s. ♥ ♥ BZZZZZZZZ: the famous "buzzing" sound bee
ney (also called "crystallization"), that causes the h
substance consisting of microscopic grains discharg
ed from a single plant species. ♥ ♥ ♥ MONOFLORA
es not covered in wax in the h
ess ♥ ♥ NECTAR: the sweet

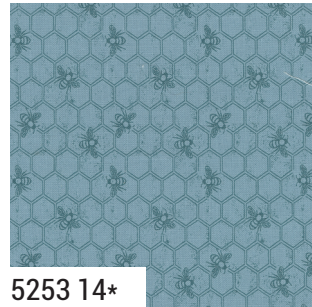
5254 14*



5230 54



5252 14*



5253 14*



5250 14*

5250

Asst.
15

Asst.
10

Low Cal
10

AB

F8

HB

JR

LC

MC

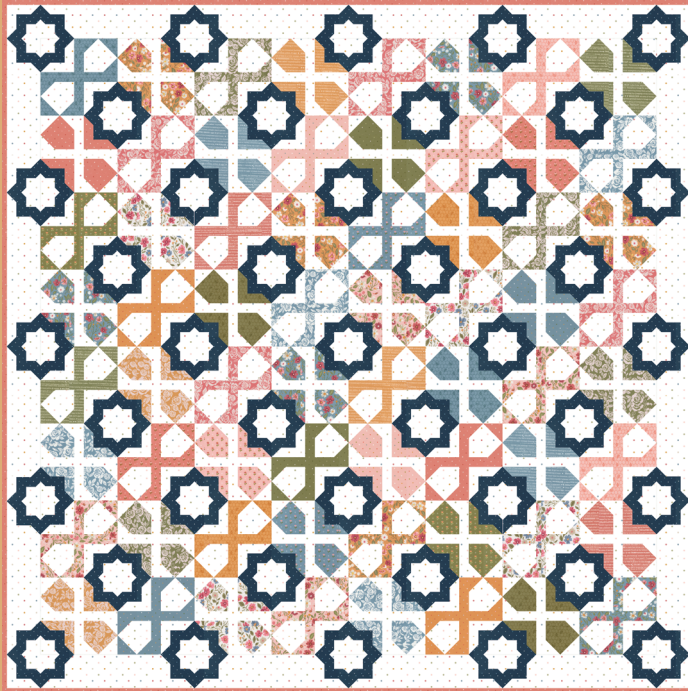
PP

NOVEMBER DELIVERY

•30 Prints •100% Premium Cotton

AB & F8 include all 30 skus. HBs, JRs, LCs, MCs & PPs include 30 skus with two each of 5250, 5251, 5252-11 & 5254-11.

wild honey *Lella Boutique*



LB 246 Dreamer 71" x 71" LC or F8 Friendly



LB 249 Mini Charmed Pillow 17" x 17"
MC Friendly



Navy Version

White Version

LB 248 Honey Glow 74" x 80" HB Friendly



LBX003 Butterfly Patch
Cross Stitch approx. 4" x 4"

wild honey *Lella Boutique*



LB 247 Bloom and Buzz 72" x 72" JR Friendly



Green Version



White Version

LB 250 Vintage Blooms 76" x 76"