

RUBY STAR RIBBON!

Our designers have been working with Renaissance Ribbons to give y'all these incredible ribbon packs and adorable ribbon spools! Each designer chose between 5-7 of their iconic designs from over the years to make into the cutest ribbons in varying sizes for all your ribbon needs! Collect them all, or pick and choose your favorite designs!

These ribbons are in stock now and available for shipping! The ribbon packs are not shown to scale, but the individual ribbons are!

80's GREATEST HITS

designs by Kimberly Kight

5 designs, 1 yd of each # : DP 132

BEST OF MELODY MILLER

design by Melody Miller

5 designs, 1 yd of each # : DP 112



BEST OF SARAH WATTS

designs by Sarah Watts

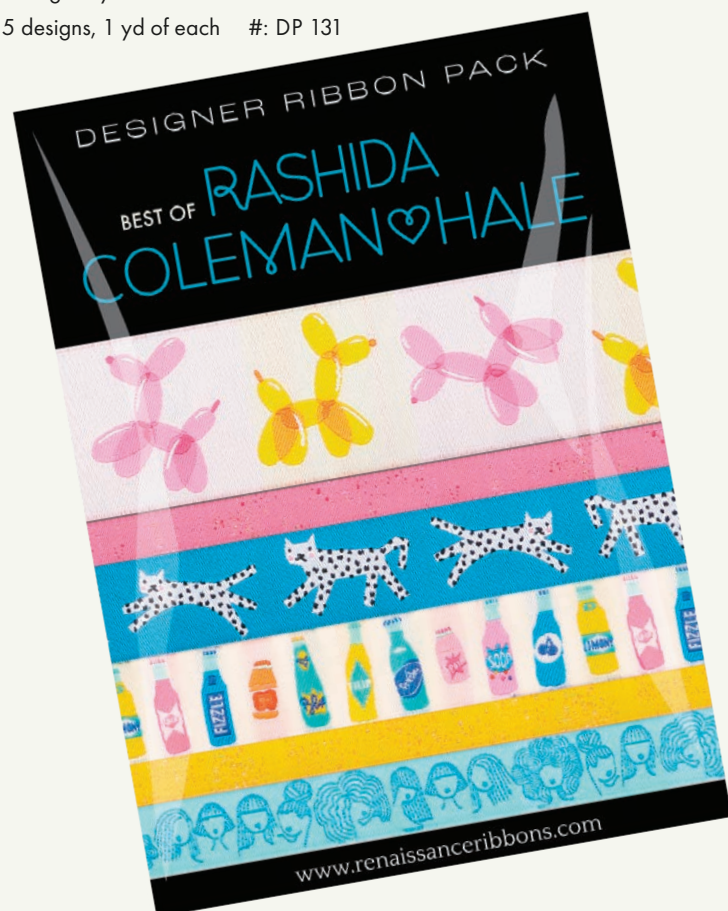
5 designs, 1 yd of each # : DP 113



BEST OF RASHIDA COLEMAN-HALE

designs by Rashida Coleman-Hale

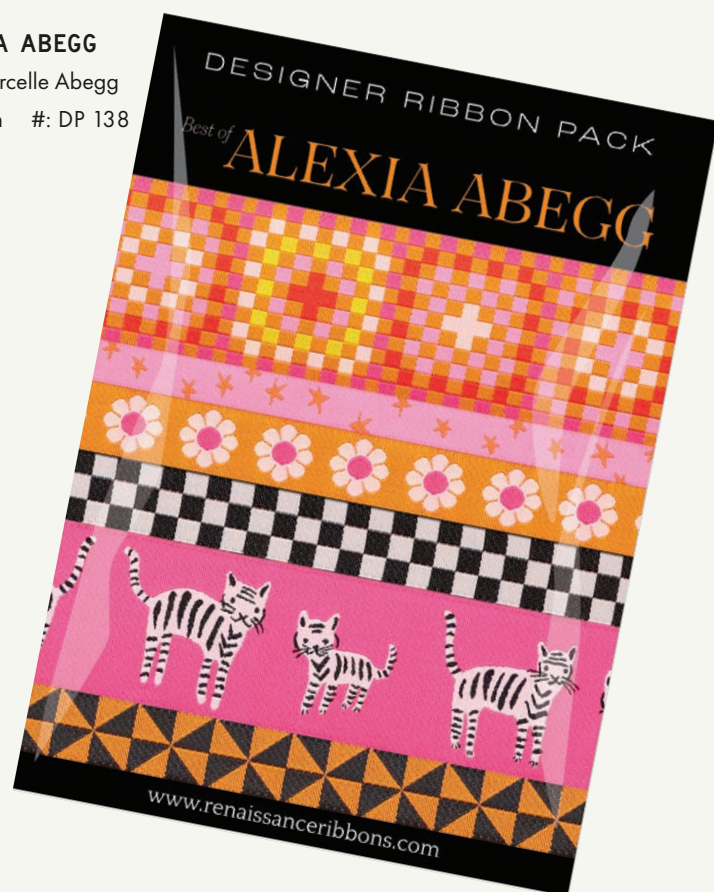
5 designs, 1 yd of each # : DP 131



BEST OF ALEXIA ABEGG

designs by Alexia Marcelle Abegg

5 designs, 1 yd of each # : DP 138



melody miller



Designs by Melody Miller

A. HEARTS IN SHELL
#: MM 106 10MM COL 2

B. HEARTS IN SORBET
#: MM 106 10MM COL 1

C. HEARTS IN GALAXY
#: MM 106 10MM COL 3

D. SPARK
#: MM 105 10MM COL 1

E. TELEPHONES
#: MM 102 22MM COL 1

F. JUICE BOXES
#: MM 103 38MM COL 1

G. TEACUPS
#: MM 104 16MM COL 1

H. TYPEWRITERS
#: MM 101 51MM COL 1

moda 129

✦ SARAH ✦
WATTS ✦

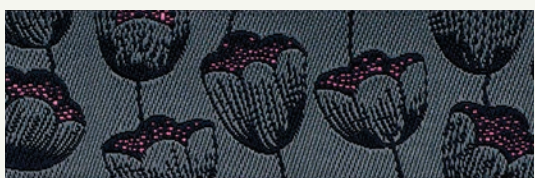
A



B



C



D



E



F



Designs by Sarah Watts

A. WILLOW
#: SW 108 38MM COL 1

B. COSMOS
#: SW 111 16MM COL 1

C. MAGIC TULIPS
#: SW 112 22MM COL 1

D. MEOW MEOW
#: SW 109 38MM COL 1

E. MYSTERY FOOD
#: SW 113 38MM COL 1

F. MUSHROOMS
#: SW 110 16MM COL 1

RASHIDA COLEMAN♥HALE

A



B



C



D



E



F



Designs by Rashida Coleman-Hale

A. LADIES
#: RCH 114 16MM COL 1

B. SPECKLED IN PINK
#: RCH 115 10MM COL 1

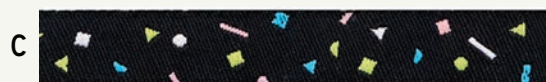
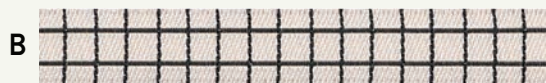
C. SPECKLED IN YELLOW
#: RCH 115 10MM COL 2

D. BALLOON DOGS
#: RCH 111 38MM COL 1

E. SNOW LEOPARDS
#: RCH 112 22MM COL 1

F. POP!
#: RCH 113 22MM COL 1

Kimberly Kight



Designs by Kimberly Kight

A. GUMMY BEARS
#: KK 102 22MM COL 1

B. PUSH POPS
#: KK 101 38MM COL 1

C. SUGAR CONE
#: KK 104 16MM COL 1

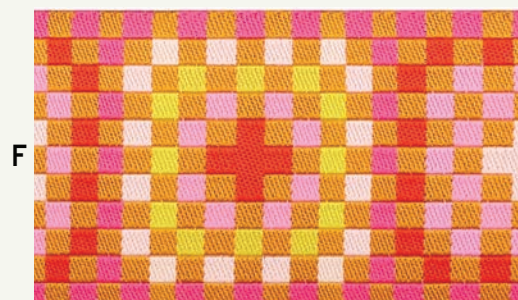
D. FRIED EGGS
#: KK 103 16MM COL 1

E. GRID
#: KK 105 10MM COL 1

F. 80'S PARTY
#: MM 106 10MM COL 1

G. SPRINKLES
#: KK 107 10MM COL 1

ALEXIA MARCELLE ABEGG



Designs by Alexia Marcelle Abegg

A. TIGER STRIPES
#: ALA 102 38MM COL 1

B. STARRY IN VIVID PINK
#: ALA 106 10MM COL 1

C. DAISY
#: ALA 103 16MM COL 1

D. CHECKER IN CAYENNE
#: ALA 104 16MM COL 2

E. CHECKER IN BLACK
#: ALA 104 16MM COL 1

F. GRANNY SQUARE
#: ALA 101 38MM COL 1

G. WINDMILL
#: ALA 105 16MM COL 1