

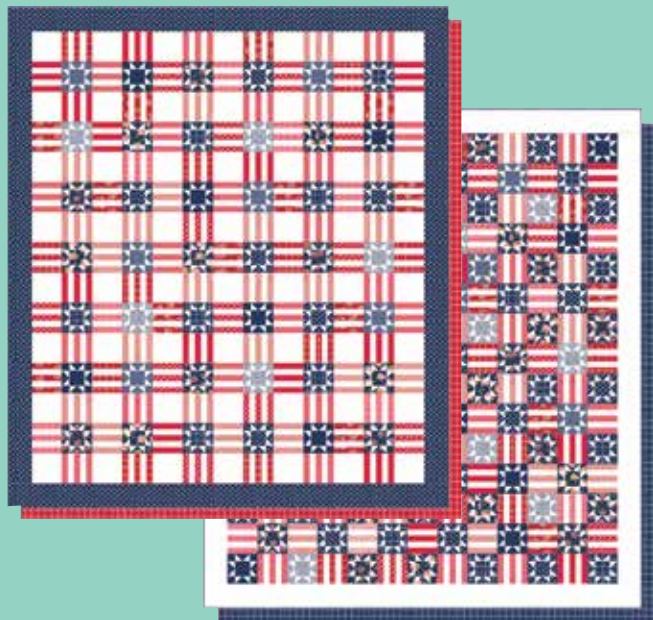
One Fine Day

BY BONNIE & CAMILLE

It's a good day to have a good day.



TB 251 Stars Stripes 2 Version A
73" x 83"



TB 251 Stars Stripes 2 Version A
73" x 83"

Patterns by Thimble Blossoms



TB 254 Simply Swoon
72" x 72"



TB 254 Simply Swoon
42" x 42"

NOVEMBER DELIVERY

moda FABRICS + SUPPLIES®

This latest Bonnie & Camille collection is sure to make a good day even better. We think of this as a sister collection to our much-loved Scrumptious so One Fine Day includes all of those original colors, with a bit of our favorite Navy mixed in. The beautiful vintage florals pair perfectly with tiny bias stripes, a classic windowpane, and for a little touch of whimsy, there are some little four leaf clovers.

After all, Anne had said to Marilla once, I believe the nicest and sweetest days are not those on which anything very splendid or wonderful or exciting happens but just those that bring simple little pleasures, following one another softly, like pearls slipping off a string.

- L.M. Montgomery, Anne of Avonlea

ISE 940 Weekender

(found in The Bonnie & Camille Quilt Bee Book)
71" x 71" F8 Friendly



ISE 940
The Bonnie & Camille Quilt Bee

TB 252 Lucky Day B

72" x 72"

[Click Here To Shop This Collection!](#)



TB 252 Lucky Day A

72" x 72" F8 Friendly



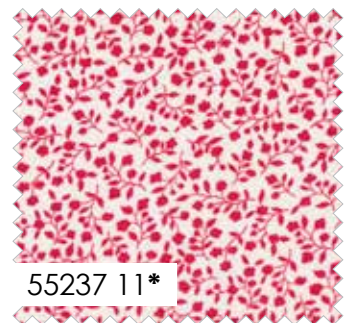
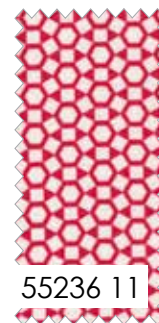
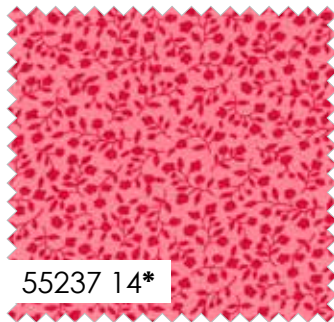
TB 253 Lollipop
58" x 67" HB Friendly

One Fine Day BY BONNIE & CAMILLE

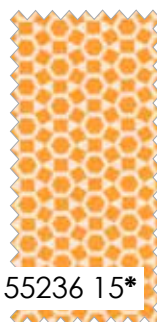
BLEACHED WHITE
9900 98



TEA ROSE
9900 89



BETTY'S RED
9900 123

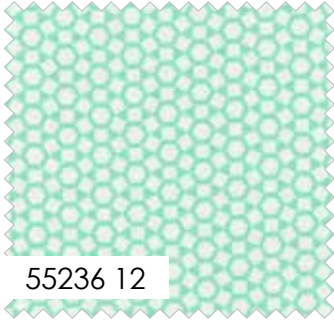


BELLA SOLID COORDINATES

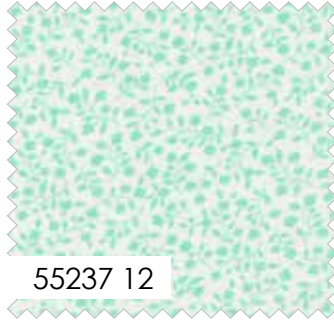
moda FABRICS + SUPPLIES®

NOVEMBER DELIVERY

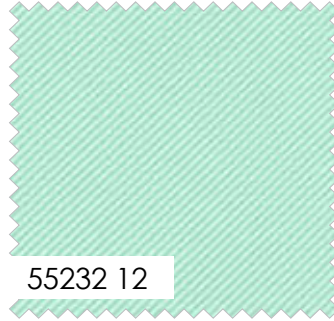
One Fine Day BY BONNIE & CAMILLE



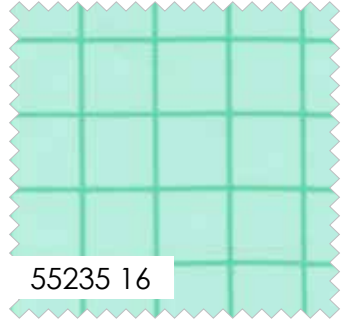
55236 12



55237 12



55232 12



55235 16



55233 12



55231 16*



55230 12*



55230 18*



55234 18*



55235 18



55237 18*



55233 18*



55232 18



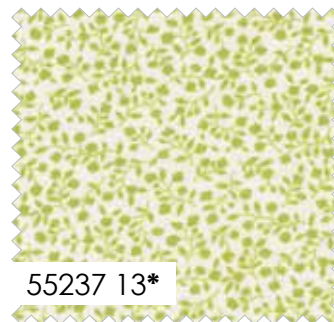
55231 18*



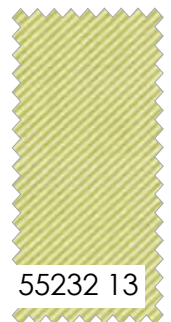
55230 13*



55233 13*



55237 13*



55232 13



55235 17

SEA GLASS
9900 378

GREEN
9900 65

CHARTREUSE
9900 188

BELLA SOLID COORDINATES

55230

Asst. 15

Asst. 10

Low Cal 10

AB

F8

HB

JR

LC

MC

PP

NOVEMBER DELIVERY

•40 Prints •100% Premium Cotton

A black steam iron stands upright on a light blue floral tablecloth. In the foreground, a piece of quilted fabric with a blue and white geometric pattern is laid out. The background is a blurred bookshelf filled with books. The entire scene is framed by a decorative border with red roses and blue flowers.

It's a
Good Day
to have a
Good Day!

moda FABRICS + SUPPLIES®

BONNIE & CAMILLE

Ironing Board Covers



Aqua Standard Ironing Board Cover
Stock#: 965 48 Min 2
Size: 15" x 54"
fits most standard size ironing boards



Navy Wide Ironing Board Cover
Stock#: 965 49 Min 2
Size: 20" x 50"
fits most wide size ironing boards

moda FABRICS + SUPPLIES®

NOVEMBER DELIVERY