



SWEET CECILY

BY JANET CLARE



I would dearly love to have a beautiful garden, one full of fragrant blooms year-round with plenty of seating areas to stop and admire it all. Sadly, I don't really like gardening...

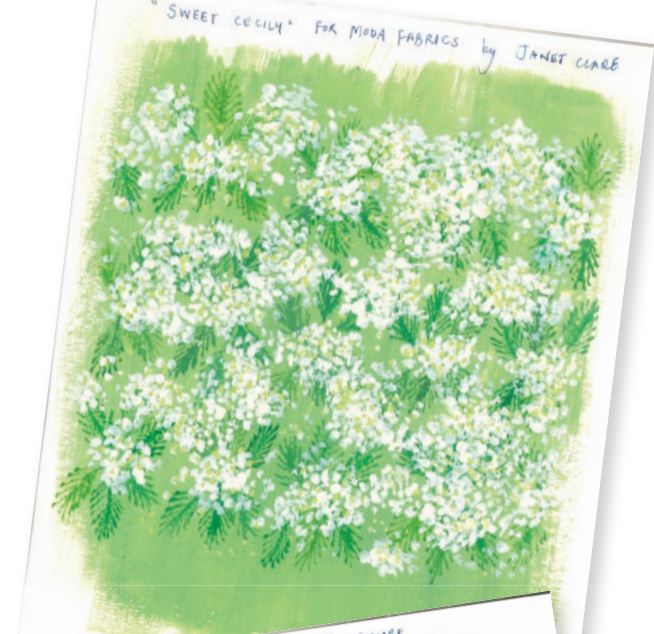
So, I content myself with visiting gardens and fortunately we have a rather famous one near us; 'Wisley', the Royal Horticulture Society's flagship.

I enjoyed a day there drawing and painting in my sketchbook and having many conversations with fellow visitors who were all fascinated to see someone drawing in public; one little girl was excited to hear that drawing patterns and colouring them is a real job!

'Sweet Cecily' was started on that lovely day, whilst I was feeling grateful for calling drawing my job and daydreaming about waking up with a beautiful garden of my own to sit in whilst enjoying a book and a cup of tea.

moda OCTOBER DELIVERY





SWEET CECILY BY JANET CLARE



24640 16



24644 12



24642 11



24647 11



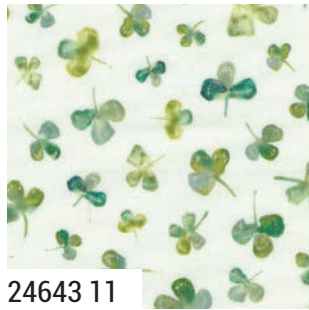
24641 11



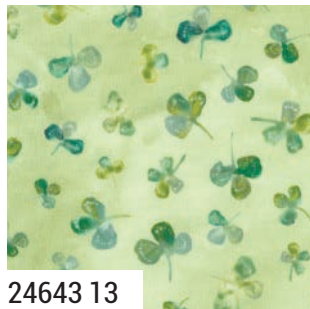
24646 11



24642 12



24643 11



24643 13



24646 13



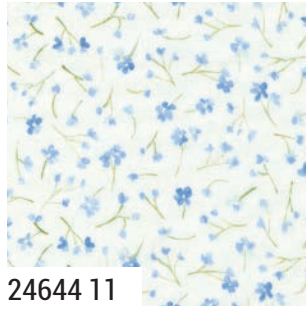
24640 13

moda OCTOBER DELIVERY

SWEET CECILY BY JANET CLARE



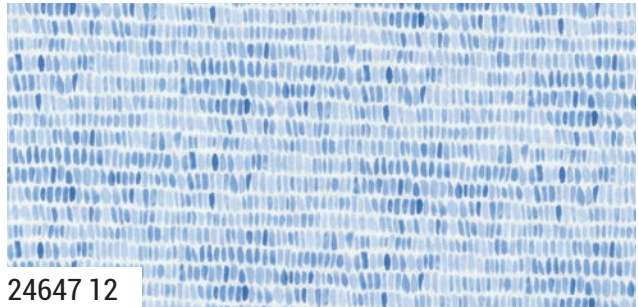
24641 14



24644 11



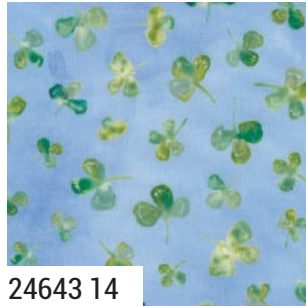
24645 11



24647 12



24642 13



24643 14



24646 15



24640 14

24640

Asst.
15

Asst.
10

AB

JR

LC

MC

PP

OCTOBER DELIVERY

•19 Prints •100% Premium Cotton
AB includes all 19 skus. JRs, LCs, MCs & PPs include two each of 19 skus plus 24640-14 & 16.

SWEET CECILY BY JANET CLARE



JC 267 Edith 80" x 80" by Janet Clare
Additional size available as 60" x 60"



JC 265 Mabel 75" x 80" by Janet Clare
Additional size available as 60" x 50"



JC 266 Cora 81" x 86" by Janet Clare
Additional size available as 63" x 57"