



Dear Santa

By: Primitive Gatherings



PRI 956 Starring Santa 80" x 88"



Dear Santa, What can I say...I love to stitch! This nostalgic Santa is the centerpiece of this simple collection. Stitching this Redwork Santa will be a joy for every hand stitcher or it can be left unstitched for the beginning quilters. There are so many possibilities with this panel. Make it into a simple quilt by adding borders, more advanced by adding quilt blocks to it, whatever your skill level is there's a way. The nine coordinating red and cream prints are also timeless for making simple to advanced projects...now you just have to decide which one to make first!

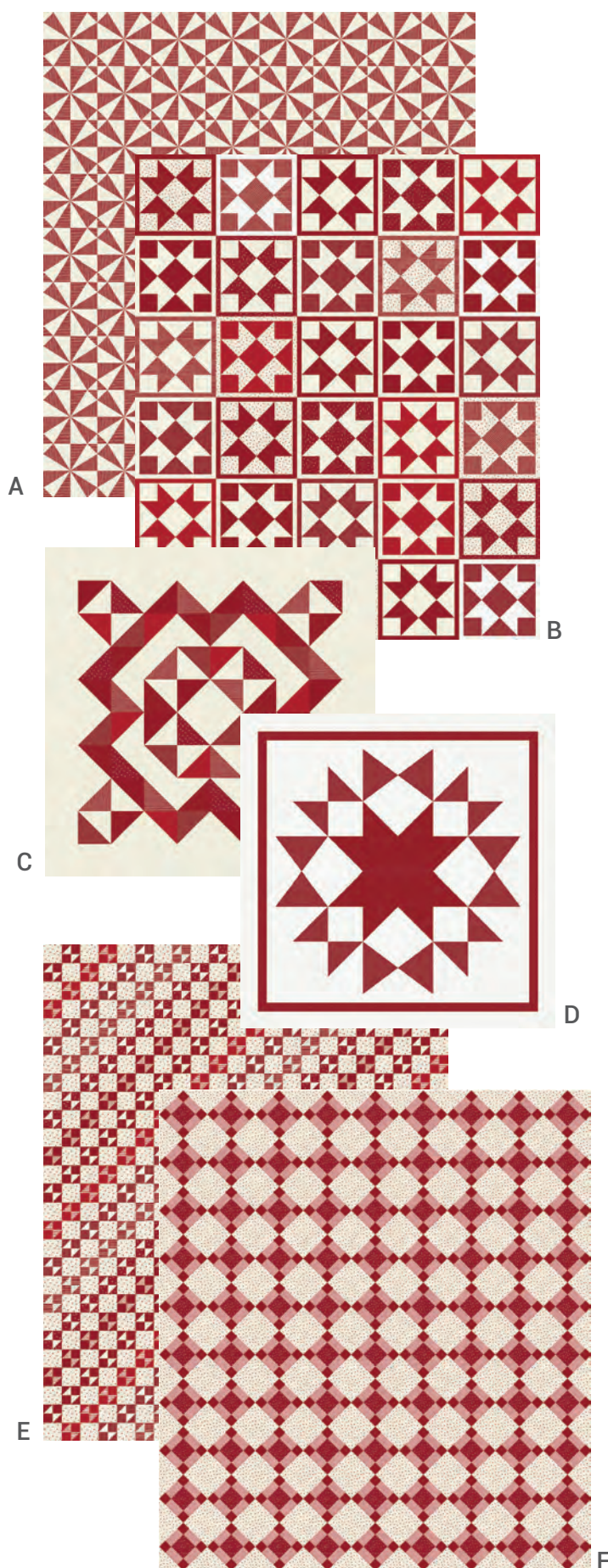
- Lisa Bongean

May 2024 Delivery

IG | @lisabongean #dearsantafabric

moda FABRICS + SUPPLIES®





**Patterns included in the book
Dear Santa PRI 1021 by Primitive Gatherings**

- A) Santa In Flight | 64" x 72"
- B) North Pole | 50" x 50"
- C) Santa Tracker | 50" x 50"
- D) Twinkle | 90" x 90"
- E) Little Gifts | 55" x 67"
- F) Santa Tracks | 76" x 84"
- G) Countdown to Santa's Visit | 78" x 86"
- H) Dear Santa I Can Explain | 99" x 99"

Dear Santa By: Primitive Gatherings



49260 13



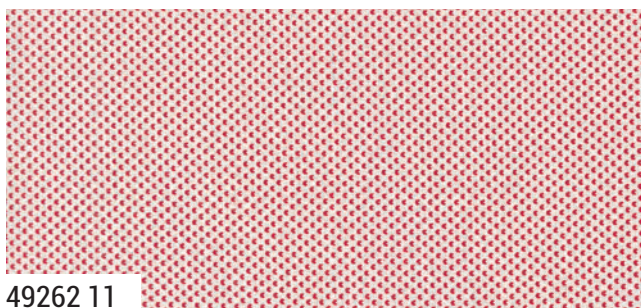
49261 13



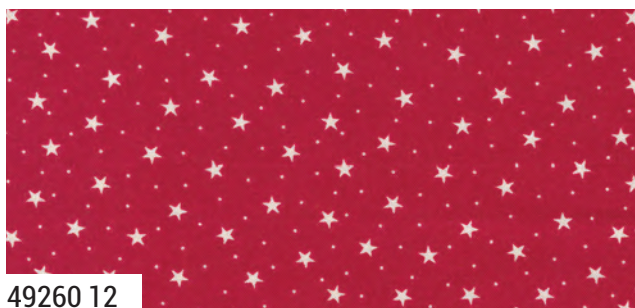
49260 11



49261 11



49262 11



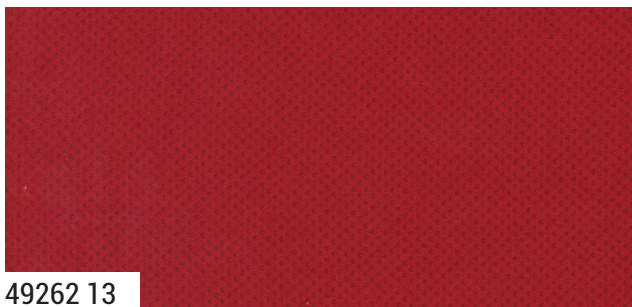
49260 12



49261 12



49262 12



49262 13

All prints shown at 50%

moda
FABRICS + SUPPLIES®

MAY DELIVERY

9900 182 PORCELAIN

Bella Solid Coordinates

Dear Santa *By: Primitive Gatherings*

9900 16 CHRISTMAS RED

9900 17 COUNTRY RED

Bella Solid Coordinates

121



49259 11 Panel Size: 36" x 44"

49260

Asst.
15

Asst.
10

HY

MAY DELIVERY

•10 Prints •100% Premium Cotton

HY Bundles do not include the panel.

Bella Solid Coordinates are not included in assortments or precuts.