



BLOOM & GROW

Kathy Schmitz Studios

Quotes about gardens so inspire me. I wanted to include these charming words of growth and patience into a fabric line and that is how Bloom and Grow came to be. The quotes themselves inspired the images I drew. To add a bit of a vintage look, I created the designs as silhouettes honoring the profile silhouettes I remember making in my youth.

This garden theme lent itself to a panel of embroidery designs too! The fun thing about this panel is that the designs already have a hand-stitched look to them. They can be used as they are or you can add your own embroidery stitches to them.



DECEMBER DELIVERY

moda

BLOOM & GROW Kathy Schmitz Studios



7055 11

Panel Size: 24" x 44". Block Size: 10 1/2" x 10 1/2". Border Size: 2 1/2".



7055 12



7055 14

moda

DECEMBER DELIVERY

BLOOM & GROW Kathy Schmitz Studios



7056 11

Panel Size: 24" x 44". Block Size: 6 1/2" x 6 1/2". Border Size: 2 1/2".



7056 12



7056 14

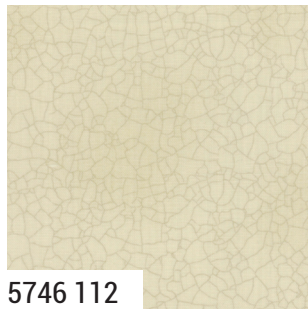
moda

DECEMBER DELIVERY

BLOOM & GROW Kathy Schmitz Studios



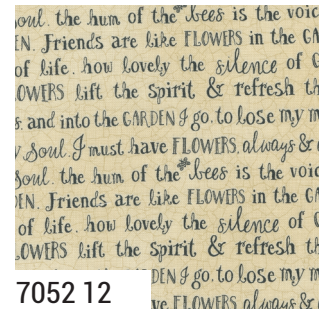
7053 12



5746 112



7054 11



7052 12



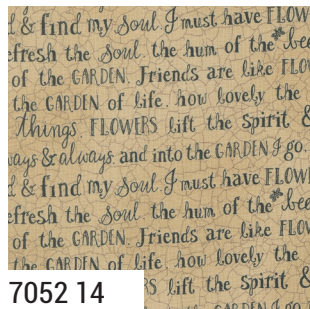
7054 12



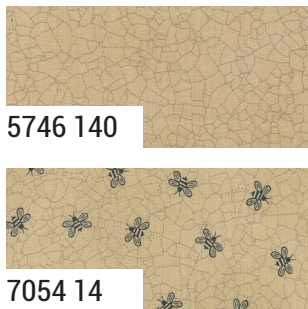
7051 12



7050 11



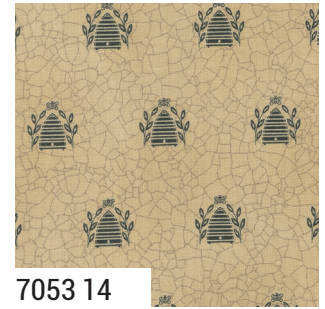
7052 14



5746 140



7051 14



7053 14



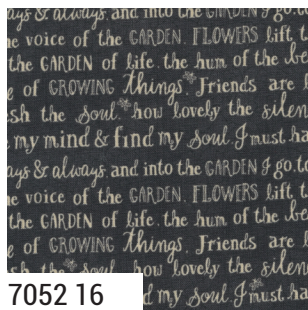
7050 12



7050 14



7054 16



7052 16



7053 16



7051 16

7050

Asst. 15

Asst. 10

AB

JR

LC

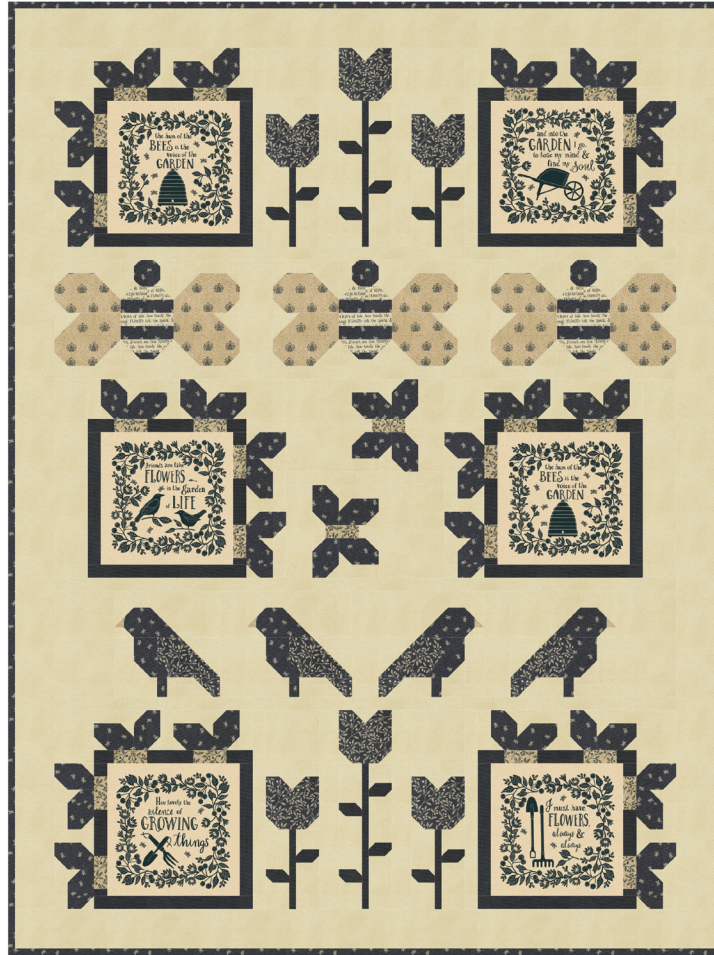
MC

PP

DECEMBER DELIVERY

•25 Prints •100% Premium Cotton

ABs include 19 skus plus one panel 7056-14 cut 24" x 44". JRs, LCs, MCs & PPs include three each of 7050-11 & 14 and two each of 7050-12 & 7051-7054 & 5746.



CHD 2418 Happy Place 53" x 71"
by Coach House Designs



CHD 2416 Feeling Owly 62" x 74"
by Coach House Designs



CHD 2417 Stitching in the Garden 66" x 82"
by Coach House Designs