

Nordic Stitches

Wenche Wolff Hatling of  NORTHERN QUILTS



C LASSIC WHITE, RED AND SHADES OF BLUE COMBINE WITH A SCANDINAVIAN LOOK IN NORDIC STITCHES. JUMPING BLIXEN - REINDEER - AND DANCING GIRLS, KNITTED STITCHES AND HEARTS ARE AMONG THE CLASSIC MOTIFS INSPIRED BY NORDIC FOLKLORE AND THE TRADITIONAL PATTERNS OFTEN SEEN IN OLD STITCHERY AND SWEATERS.

NORTHERNQUILTS.NO

ABLE TO KEEP WARM BY TAKING THE WORK OUT OF PATCHWORK!



NORDIC STITCHES BY WENCHE WOLFF HATLING

April 2017
Delivery

moda

39712 15*



39710 13*



39715 15



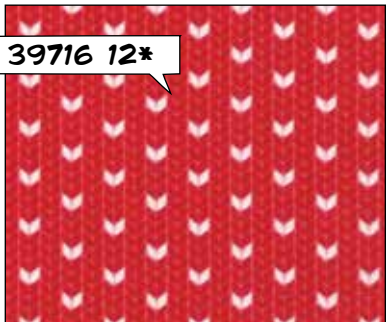
39713 13*



39714 14



39716 12*



RAUD



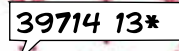
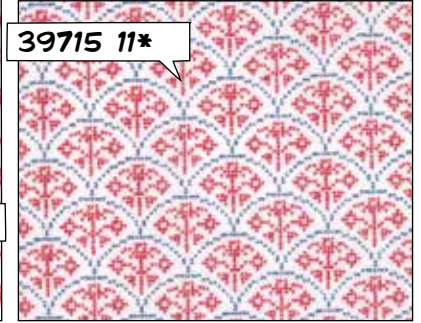
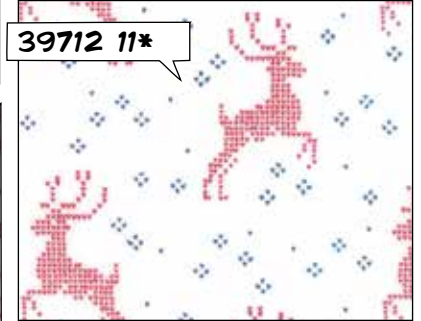
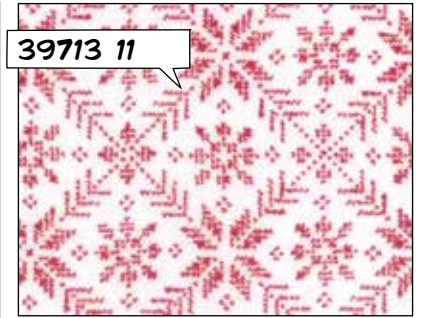
NQ 413 / NQ 413G
Dancing Girls
Size: 65" x 65"



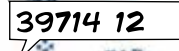
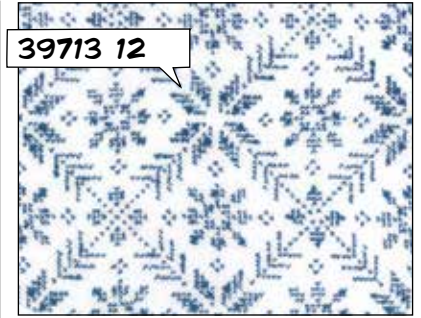
NQ 412 / NQ 412G
Saga Quilt
Size: 56" x 76"

NORDIC STITCHES BY WENCHE WOLFF HATLING

RAUD SNO



BLA SNO



NORDIC STITCHES BY WENCHE WOLFF HATLING

April 2017
Delivery

moda

FROST

39713 18

39712 20

39715 20*

CHILL

39713 16*

39714 17

39716 15*

39710 18

39715 19

BLA

39711 17

39710 15*

39712 17*

39716 13*

39713 15

MARINE

39711 15*

39710 14

39713 14*

39715 17

39712 16

39710

Asst. 15

Asst. 10

Low Cal 10

AB

JR

LC

MC

PP

• 100% Premium Cotton • 36 Prints

JR's, LC's, MC's and PP's include two each of 39714.

Delivery: April, 2017