

PUMPKIN PARTY Deb Strain



You are invited to a Halloween celebration! Other guests include: friendly spiders, jack-o-lanterns, bats, happy witches, wise owls, silly ghosts and lots of fun! Cobwebs, "Happy Halloween" banners and stars are the decorations and candy corn is everywhere!

This whimsical Halloween group presents the happy, colorful, fun part of the season; sure to be the perfect addition to your spooky and festive *Pumpkin Party!*



19634 14 Ghostly White



*19633 12 Pumpkin Orange



19638 12 Pumpkin Orange



*19636 14
Pumpkin Orange

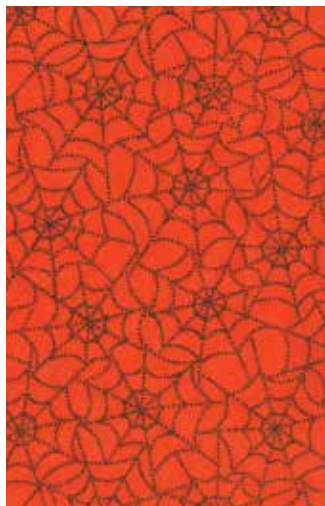
Fabrics with * included in low cal assortment



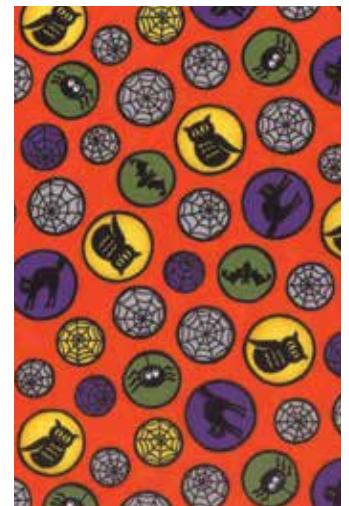
19635 12
Pumpkin Orange



*19631 12
Pumpkin Orange



*19637 12
Pumpkin Orange



19632 12
Pumpkin Orange



Pattern by Coach House Designs - CHD

CHD 1234 or CHD 1234G- Boo! Too 43" X 59"

Panel 24"x45"—Center is approx. 15¾"x17"
Smaller blocks approx. 4½"x4½"



19630 12 Pumpkin Orange



*19632 14 Potion Purple



19637 14 Potion Purple

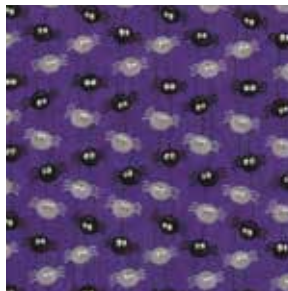
FYI: debstrain.blogspot.com



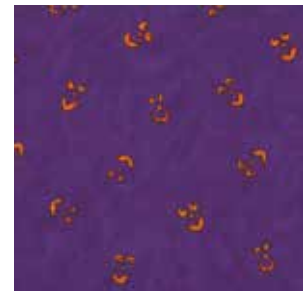
19634 13 Potion Purple



*19631 14 Potion Purple



*19635 14 Potion Purple



19636 16 Potion Purple

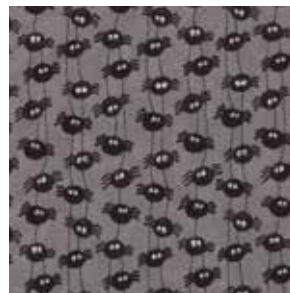
moda



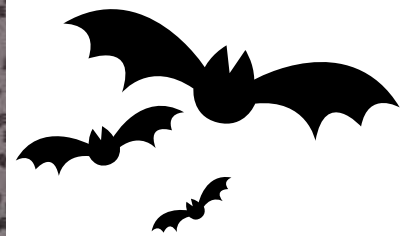
*19637 16 Ghostly White



19637 15 Spider Gray



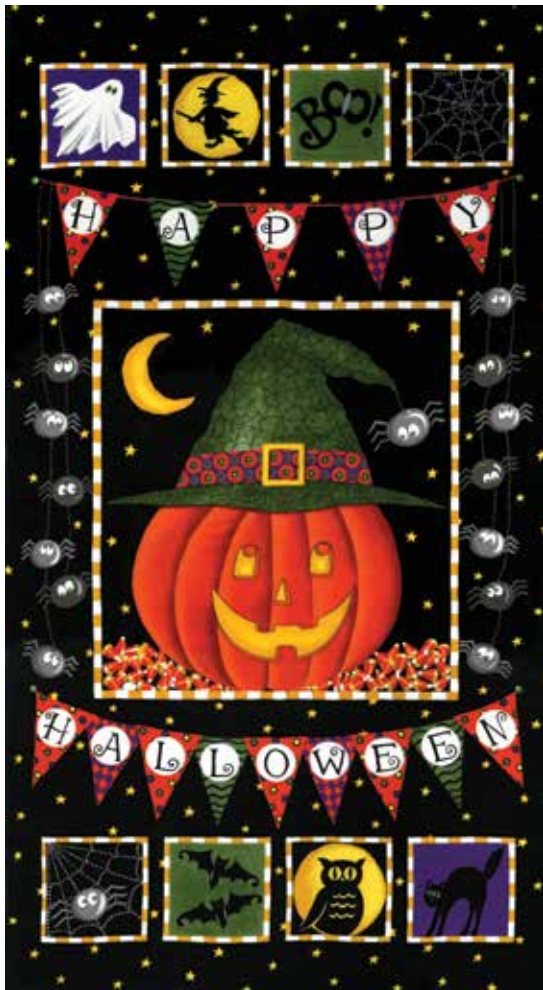
*19635 15 Spider Gray



19633 15 Spider Gray



*19638 15 Spider Gray



*19630 11 Bat Black



19638 11 Bat Black

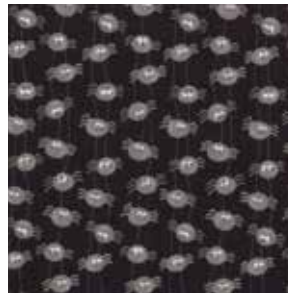


19632 11 Bat Black



*19634 11 Bat Black

"G" Patterns ship with Group

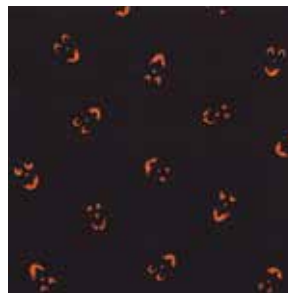


19635 11 Bat Black



19631 11 Bat Black

moda



*19636 11 Bat Black



*19637 11 Bat Black



*19633 11 Bat Black

19630

Asst. 15

Asst. 10

Low Cal 15

AB

JR

LC

MC

PP

- 29 Prints
- 100% Premium Cotton

AB's include one Panel - 19630-11 JR's, LC's MC's & PP's do not include Panels.
JR's, LC's MC's & PP's include two each of 19634, 19635, 19637 & 19636-11.

Delivery: May, 2013

Deb Strain *PUMPKIN PARTY* Patterns & Yardage



Coach House Designs –CHD
Boo! Too 43"x59"
 CHD 1234 or CHD 1234G

Yardage		1Q	10 Qs		
19631-11	Blocks	¼	2 ½	19637-11	Applique ¼ 2½
19632-11	Blocks	¼	2½	19637-12	Applique ¼ 2½
19631-12	Blocks	¼	2½	19637-14	Brdr/Binding/App 5/8 6¼
19632-12	Blocks	¼	2½	19637-15	Applique 1/8 1¼
19632-14	Border	¾	7½	19637-16	Blocks/App ½ 5
19635-14	Applique	¼	2½	19638-11	Applique ½ 5
19635-15	Applique	½	5	9880-79	Background 1 10
19636-14	Border/App	½	5		

Stay Connected!    

MODA WINTER 2013 FABRIC COLLECTIONS