



vintage modern
Bonnie & Camille

There is just something about
vintage, isn't there?

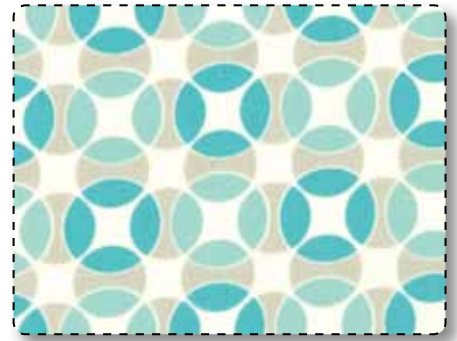
Something so special,
so loved, and so
very charming.

Lately, everywhere we look
we find wonderful vintage
inspired pieces. Even modern
quilts have a hint of that
old vintage feel.

Combining the two, vintage
with modern is just the
perfect combination, and
exactly what this line is all
about. Vintage Modern is full
of bold graphic prints, quirky
vintage based prints, and a
combination of the two in our
very favorite color palette,
lovely reds, aquas, pinks and
greens mixed with a bit of soft
gray. Perfect for quilts, home
dec, and especially remaking
grandma's most favorite apron.



55040 11* Sky

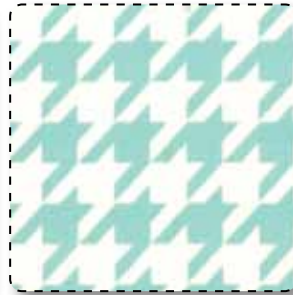


55041 11 Sky

moda



55046 11* Sky



55042 11* Sky



55048 11 Sky



55047 11* Sky



55049 11 Sky



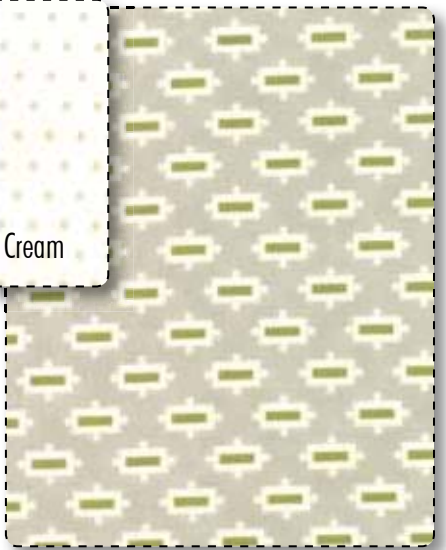
55044 11* Sky



55044 13* Pebble



55049 17* Cream



55046 13 Pebble

moda



55042 13* Pebble



55047 13* Pebble



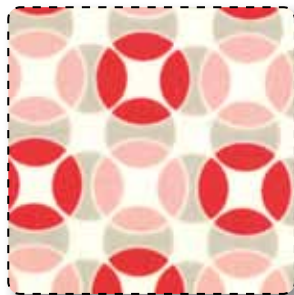
55048 13* Pebble



55043 13 Pebble



55045 13 Pebble



55041 17 Pebble



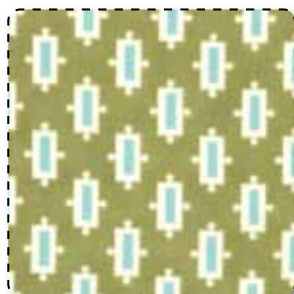
55049 13 Pebble



55049 16 Pear



55040 13 Pebble



55046 16* Pear



2 color options



TB148 or TB148G – Out on a Whim Size: 71" x 86"



2 quilts one pattern



CW 942 or CW 942G – Scrumptious Size: 54" x 68" and 43" x 43"



55048 17 Cream



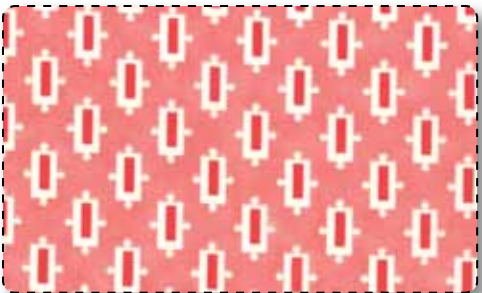
55040 17* Cream



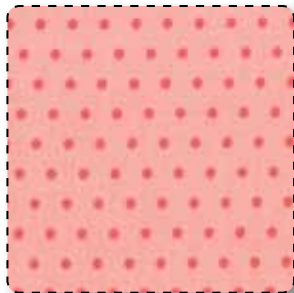
55042 14 Melon



55045 14* Melon



55046 14 Melon



55049 14 Melon

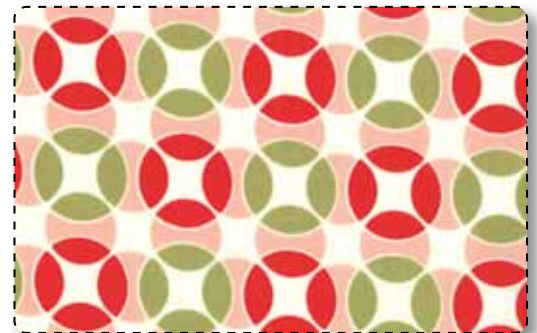


55044 14* Melon



55043 14 Melon

moda



55041 15* Candy Apple



55043 15* Candy Apple

CW 941 or CW 941G – Ziggy Size: 43" x 43" and Table Runner 17" x 25"



55047 15* Candy Apple

moda



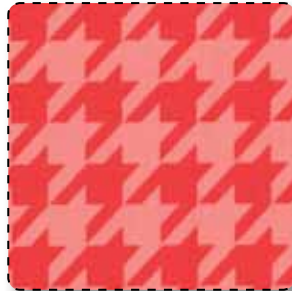
55049 15 Candy Apple



55049 25 Candy Apple



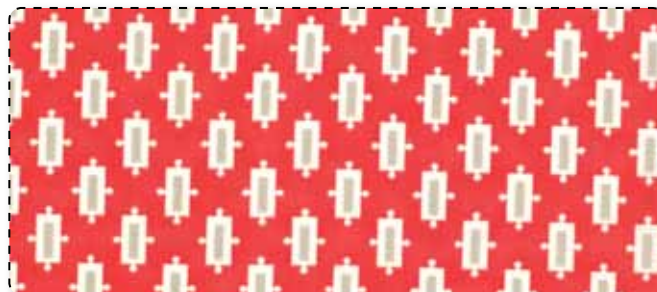
55045 15* Candy Apple



55042 25* Candy Apple



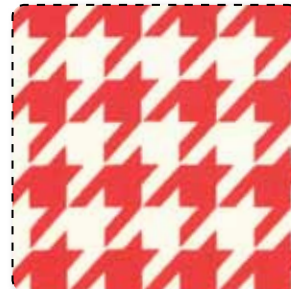
55048 15* Candy Apple



55046 15 Candy Apple



CW 939 or CW 939G – Sweet Pea BOM Size: 57" x 70"



55042 15 Candy Apple



55044 15 Candy Apple



TB141 or TB141G
Merry Stockings
Stockings are 18"



Porcelain

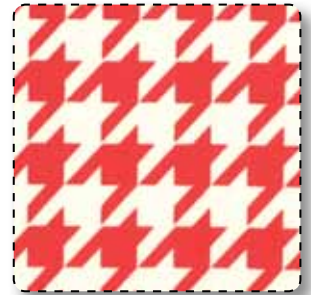
9900-182



55040 17F Cream



55044 14F Melon



55042 15F Candy Apple

Aqua

9900-34

moda flannels

Leaf

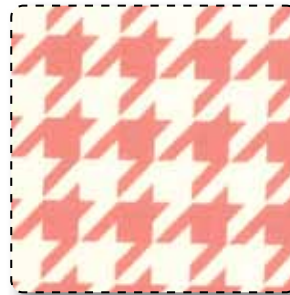
9900-192



55040 13F Pebble



55044 13F Grey



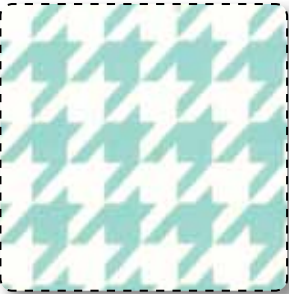
55042 14F Melon



55042 13F Pebble

Betty's Pink

9900-120



55042 11F Sky



55044 11F Sky



55040 11F Sky

Tea Rose

9900-89

Delivery: May, 2012

Asst. 55040-15 – 15 Yards of Each
 Asst. 55040-15F – 15 Yards of Each Flannel
 Asst. 55040-12 – 12 Yards of Each
 Asst. 55040-10 – 10 Yards of Each
 Asst. 55040-10H – 10 Yards of 20 Skus
 Skus: 40 Prints 6 Bella Solid 10 Flannels
 44"-45" 100% Cotton

55040AB – Bundle: 40 Skus -18"x22"
 55040F8 – Bundle: 31 Skus - Min. 2
 55040JR – Jellyroll (40) 2 1/2"x45" Strips - PK 4
 55040LC – Layer Cake (42) 10"x10" Squares - PK 4
 55040PP – (42) 5"x5" Squares - PK 12
 Bella Solids are not included in precuts or assortments.

Scarlett

9900-47

6 Bella Solids to blend Vintage Modern

Bella Solids are not included in the Assortments or Precuts

Cotton Way Patterns



CW 943 or CW 943G – Peppermint Size: 43" x 43"



CW 940 or CW 940G – Wish Size: 50" x 58"

moda

Thimble Blossom Patterns



TB147 or TB147G – Vintage Holiday
Size: 54" x 68"



TB149 or TB149G – Hopscotch
Size: 58" x 68"
no partial seams

TB150 or TB150G – A Piece of Cake Size: 63" x 74"

moda Metro

vintage modern
Bonnie & Camille