



JULY 2022

contents

- 4 ACHROMA BY RUBY STAR SOCIETY
- 8 CURIO BY MELODY MILLER
- 12 MOONGLOW BY ALEXIA MARCELLE ABEGG
- 16 WARP & WEFT MOONGLOW BY ALEXIA MARCELLE ABEGG
- 22 HOME & GIFT
- 28 BASICS

Fabrics on front cover and facing page are from Moonglow and Warp & Weft Moonglow by Alexia Marcelle Abegg (pgs 12-21).

JULY 2022 PRECUTS

Below are the irresistible precuts we are offering with this release, from adorable mini charms to full bundles.



<i>fat quarter bundle</i>	RS5092 FQ (28 skus)  7 52106 70238 7	RS0058 FQ (29 skus)  7 52106 70077 2	RS4030 FQ (26 skus)  7 52106 70202 8	RS4084 FQ (20 skus)  7 52106 70275 2
<i>jelly roll™</i>	RS5092 JR (40 pcs)  7 52106 70239 4	RS0058 JR (40 pcs)  7 52106 70078 9	RS4030 JR (40 pcs)  7 52106 70203 5	
<i>layer cake™</i>	RS5092 LC (42 pcs)  7 52106 70240 0	RS0058 LC (42 pcs)  7 52106 70079 6	RS4030 LC (42 pcs)  7 52106 70204 2	RS4084 LC (42 pcs)  7 52106 70276 9
<i>mini charm</i>	RS5092 MC (42 pcs)  7 52106 70241 7	RS0058 MC (42 pcs)  7 52106 70080 2	RS4030 MC (42 pcs)  7 52106 70205 9	
<i>charm pack</i>	RS6019 PP (42 pcs)  7 52106 70242 4	RS0058 PP (42 pcs)  7 52106 70081 9	RS4030 PP (42 pcs)  7 52106 70206 6	RS4084 PP (42 pcs)  7 52106 70277 6

FEBRUARY DELIVERY

MARCH DELIVERY

ACHROMA



★ COLLABORATIVE COLLECTION ★

Achroma means an absence of color. In this collaborative collection, you'll see prints from all five Ruby Star Society designers in a restrained black, white, and gray color palette that is filled with contrast and movement. Create sleek, neutral-hued projects by sticking just to the collection, or add your favorite basic for a fun pop of color. All prints shown at 25% scale.

FEBRUARY 2023 DELIVERY

28 premium 100% Ruby Star Cotton prints

ASSORTMENTS & PRECUTS

ASSTRS5092

15

10

RS5092

FQ

JR

LC

PP

MC

SUGGESTED SPECKLED COORDINATES & COMPLEMENTS

RS5027

14M

90

16M

59M

61M

102

SUGGESTED MODA BELLA SOLID COORDINATES & COMPLEMENTS

9900

281

185

99

PIPS | OYSTER



RS5101 13

CHECKERBOARD | OYSTER



RS5095 12

WATERCOLOR | OYSTER



RS5104 12

BRIDGE | OYSTER



RS5093 13

FORMATION | NATURAL



RS5100 11

AERIAL | OYSTER



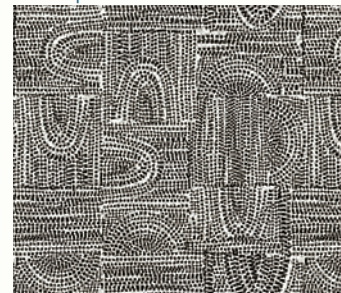
RS5094 12

AERIAL | BLACK



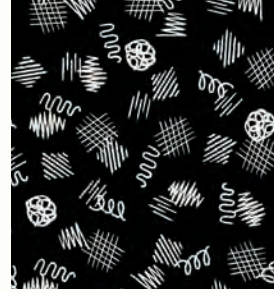
RS5094 13

BRIDGE | NATURAL



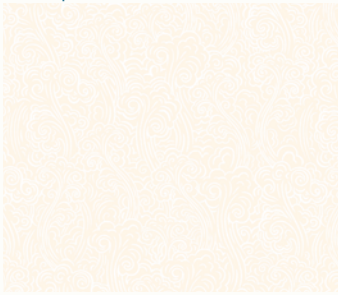
RS5093 12

SCRIBBLE | BLACK



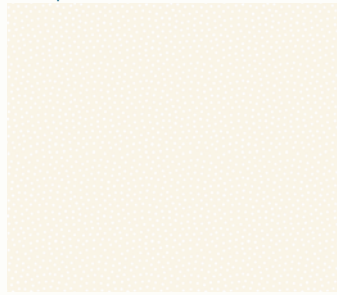
RS5102 15

SMOKE | WHITE ON WHITE



RS5103 11

SAND | WHITE ON WHITE



RS2061 21

DRIPS | WHITE ON WHITE



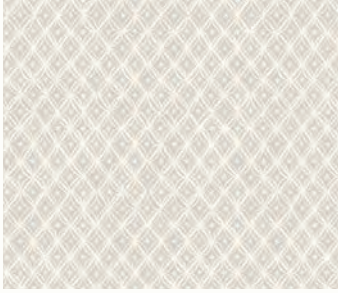
RS5092 11

QUILTFETTI | NATURAL



RS5097 12

MINI MACRAME | OYSTER



RS5099 13

SCRIBBLE | NATURAL



RS5102 13

FLING | NATURAL



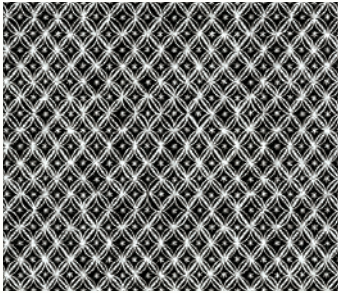
RS5096 11

HERB GARDEN | NATURAL



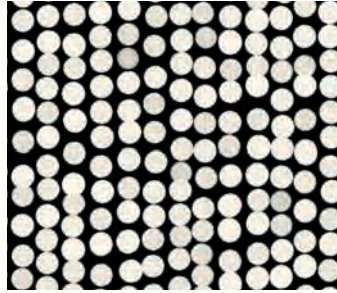
RS5098 11

MINI MACRAME | BLACK



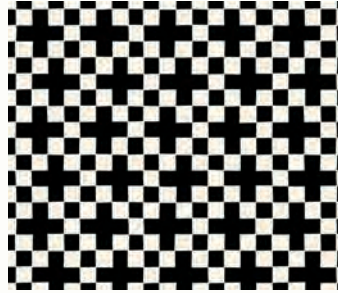
RS5099 14

PIPS | BLACK



RS5101 14

CHECKERBOARD | BLACK



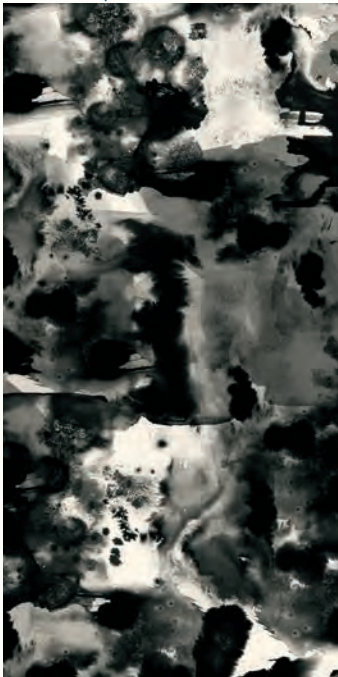
RS5095 13

FORMATION | BLACK



RS5100 14

WATERCOLOR | BLACK



RS5104 13

HERB GARDEN | BLACK



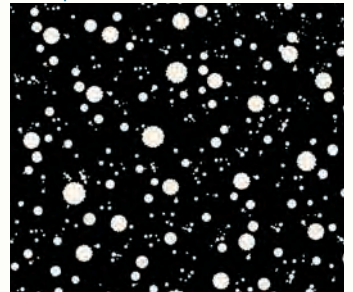
RS5098 13

QUILTFETTI | BLACK



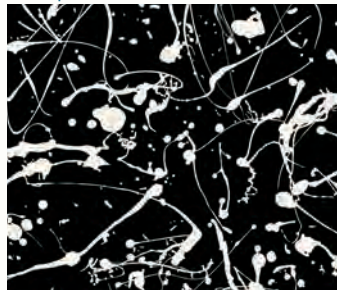
RS5097 14

DRIPS | BLACK



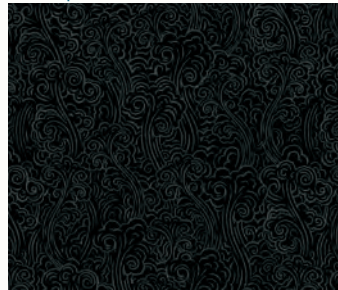
RS5092 14

FLING | BLACK



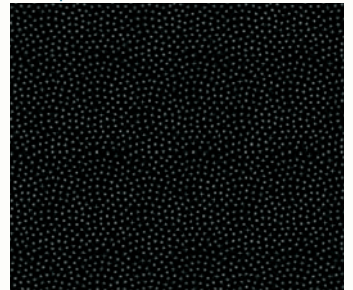
RS5096 13

SMOKE | BLACK

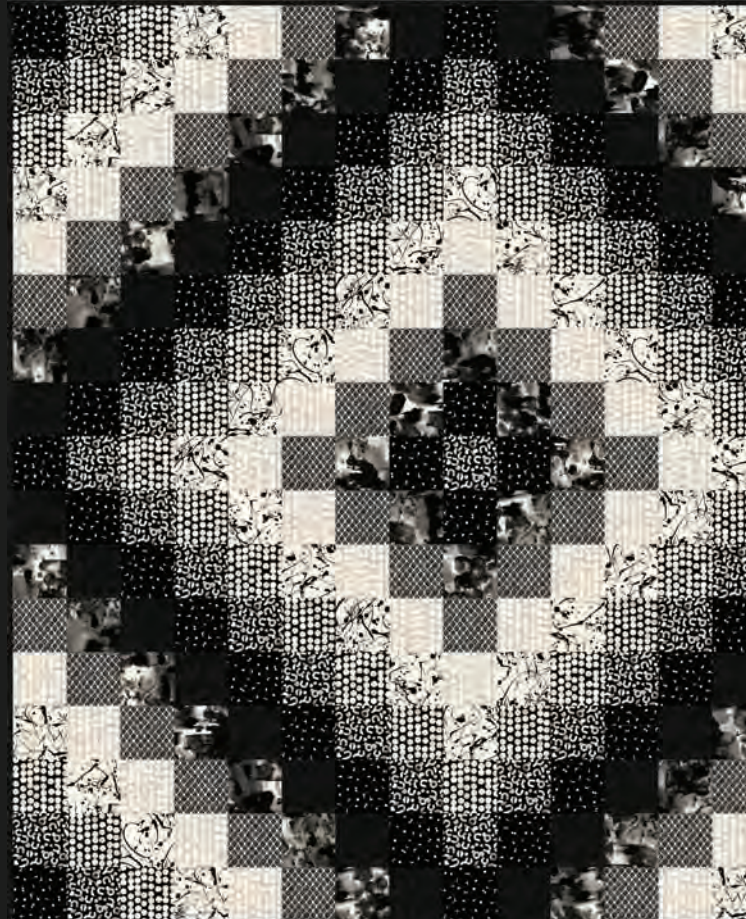
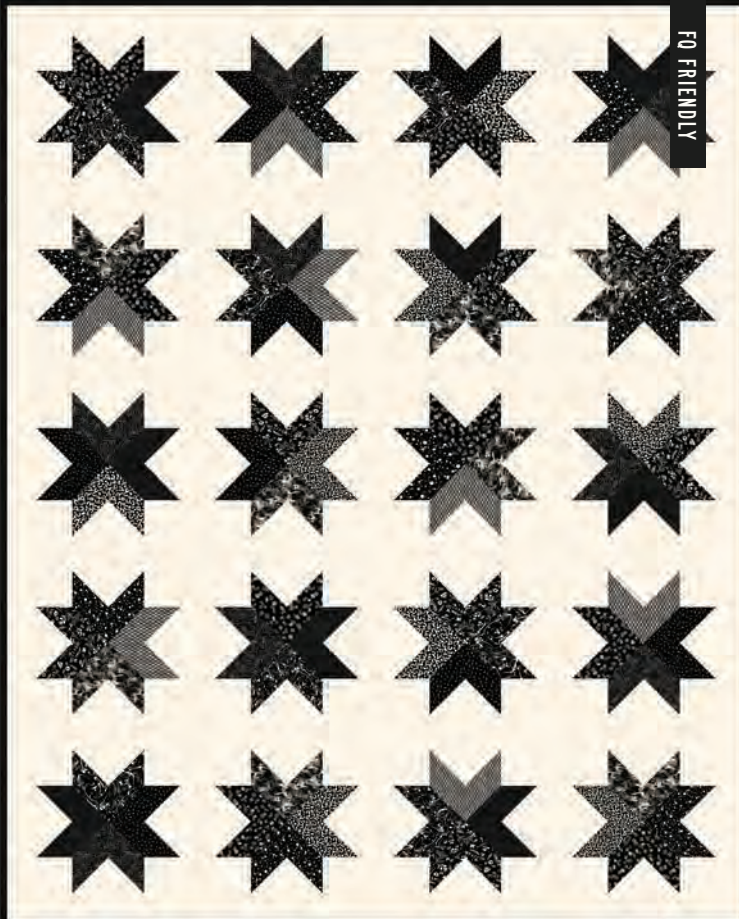
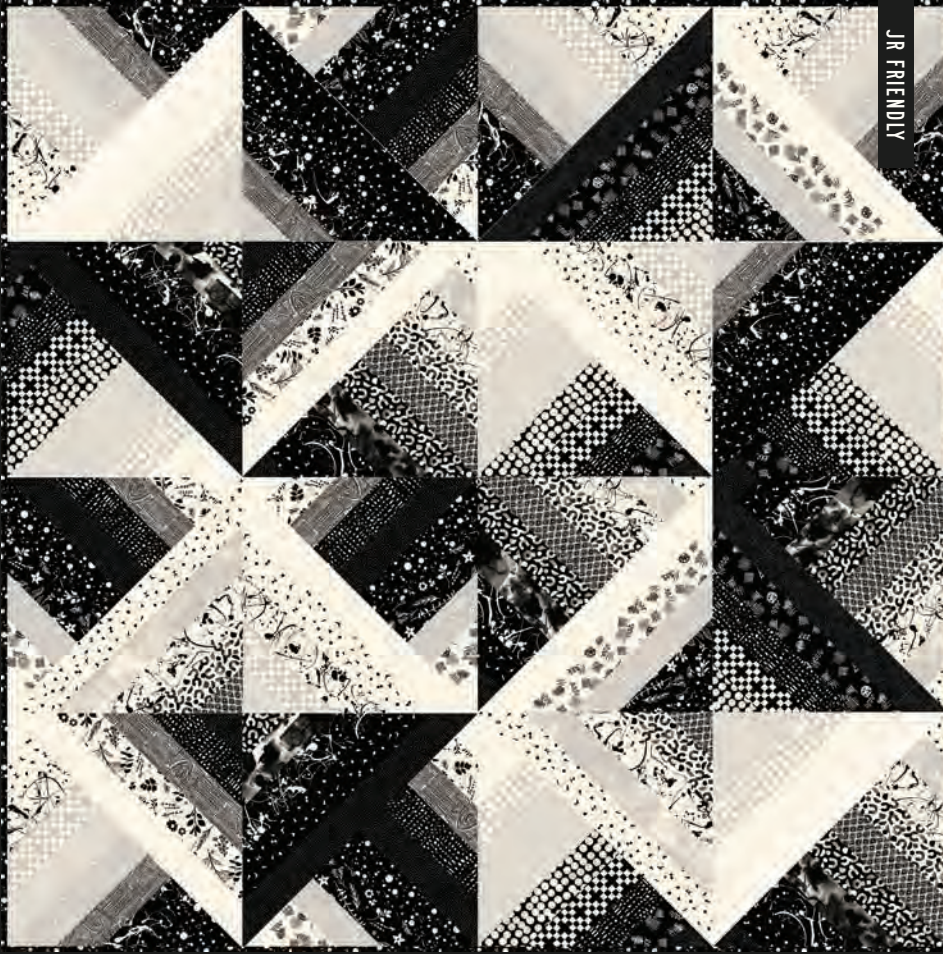


RS5103 14

SAND | BLACK



RS2061 25





LEFT

FREE PATTERN

Ruby Star Society

Jelly Rainbow

54" x 54"

MIDDLE

KTQ 149

Kitchen Table Quilting

Abigail

56" x 72"

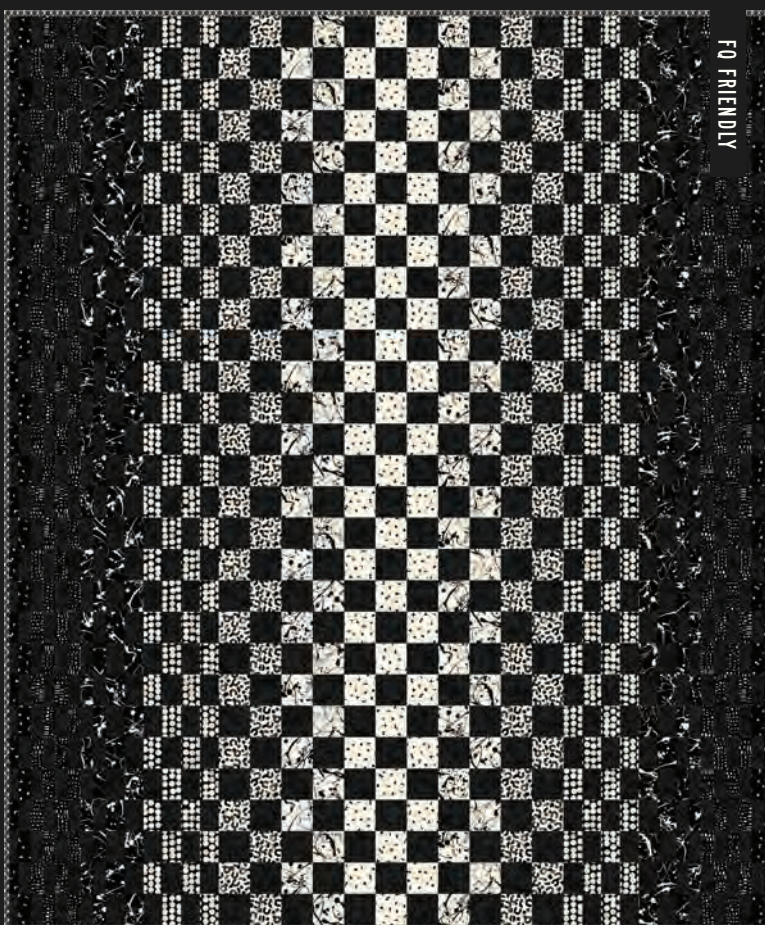
RIGHT

MH 004

Modern Handcraft

Stack

48" x 64"



LEFT

HEJ 112

Homemade Emily Jane

Beaming

58" x 72"

MIDDLE

FREE PATTERN

Ruby Star Society

Bullseye

68" x 68"

RIGHT

MH 017

Modern Handcraft

Illusion

62" x 72"



Melody recently spent some time looking back through her archives, and she realized there was a trove of prints that she had been saving for something special. Like a vintage cabinet full of treasures, she began assembling the prints into a collection. Curio is reminiscent of wandering into a dressing room of a bygone era, sifting through vanity drawers, and exploring the visual layers of paper packaging, textiles, and special fragrance bottles. All prints shown at 25% scale.

FEBRUARY 2023 DELIVERY

29 premium 100% Ruby Star Cotton prints

ASSORTMENTS & PRECUTS

ASSTRS0058



RS0058



SUGGESTED SPARK COORDINATES & COMPLEMENTS



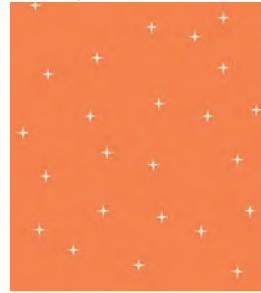
SUGGESTED SPECKLED COORDINATES & COMPLEMENTS



SUGGESTED MODA BELLA SOLID COORDINATES & COMPLEMENTS



FLICKER | ORANGE



RS0065 12

ROSES | BALMY



RS0063 13M

ENDPAPER | BALMY



RS0064 13

PERFUME | BALMY



RS0060 11

EFFLORESCENT | BALMY



RS0058 11

FALLING FLOWERS | BALMY



RS0066 12M

EFFLORESCENT | GALAXY



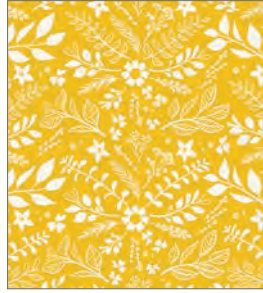
RS0058 15

WINGS | NATURAL



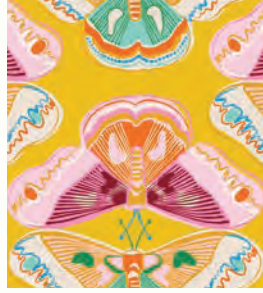
RS0059 11

SPRIGS | GOLDENROD



RS0062 12

WINGS | GOLDENROD



RS0059 12

ENDPAPER | HONEY



RS0064 12

FALLING FLOWERS | HONEY



RS0066 13M

GOLDFISH | NATURAL



RS0061 11M

FLICKER | NATURAL



RS0065 11

PERFUME | AGAVE



RS0060 12

ROSES | MOSS



RS0063 12M

FLICKER | MOSS



RS0065 18

FALLING FLOWERS | AGAVE



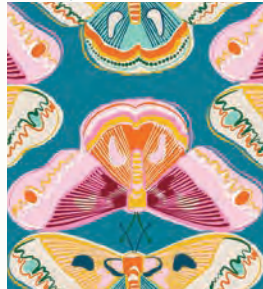
RS-66 16M

EFFLORESCENT | MOSS



RS0058 13

WINGS | MERMAID



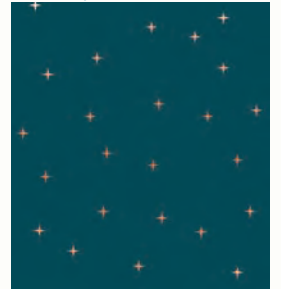
RS0059 14

PERFUME | GALAXY



RS0060 13

FLICKER | GALAXY



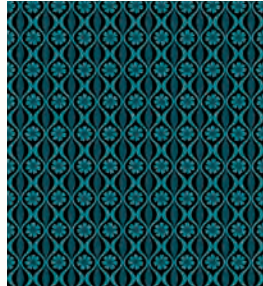
RS0065 22M

ROSES | BILLIARD



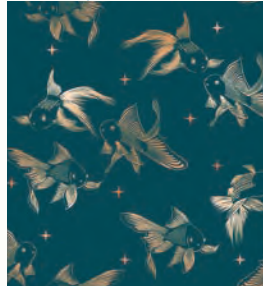
RS0063 14M

ENDPAPER | GALAXY



RS0064 14

GOLDFISH | GALAXY



RS0061 15M

FLICKER | BILLIARD



RS0065 20M

SPRIGS | BLACK



RS0062 15



A.



A.
PP 118
 Patchwork & Poodles
 Summer Glow
 66" x 66"

B.
QL 146
 Quilty Love
 Star Pop II
 60" x 67"

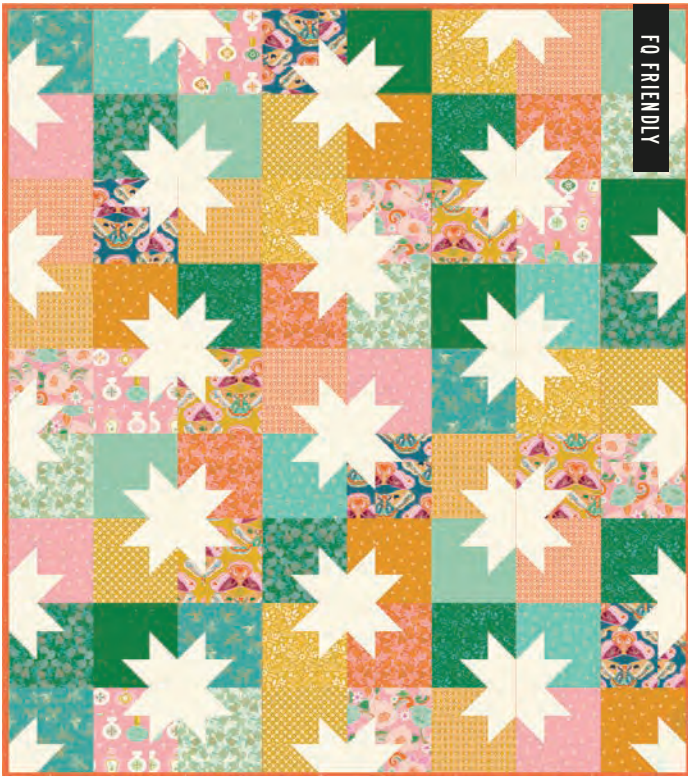
C.
MT 0085
 Modern Textiles
 Diamond Plate
 66" x 70"

D.
MM 018
 Modernly Morgan
 Same Sky
 60" x 80"



KAT 106
 Knot and Thread
 Boundless Carryall

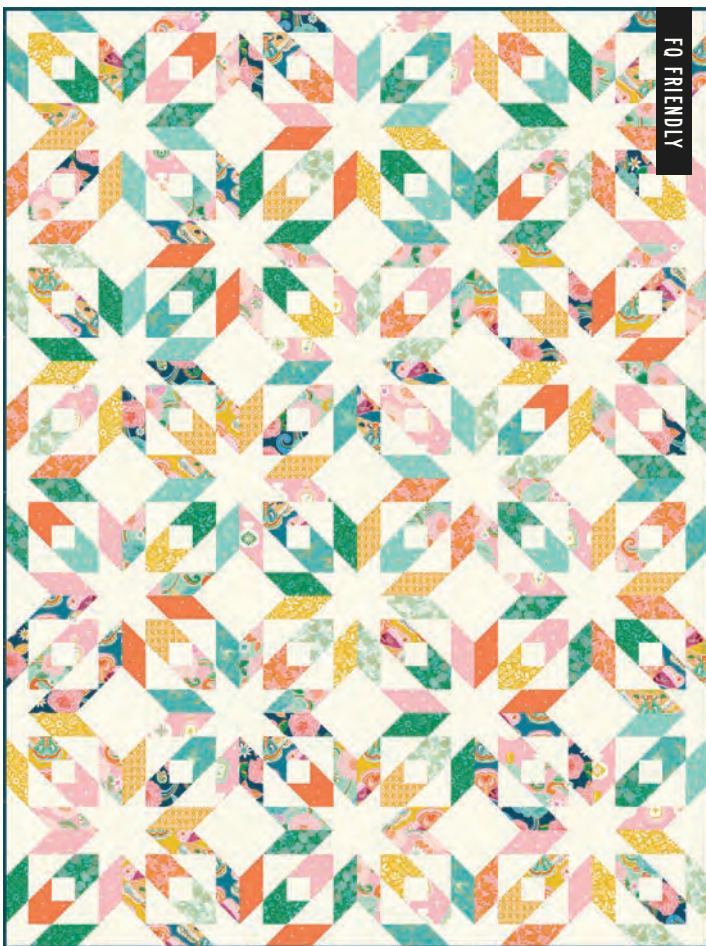
B.



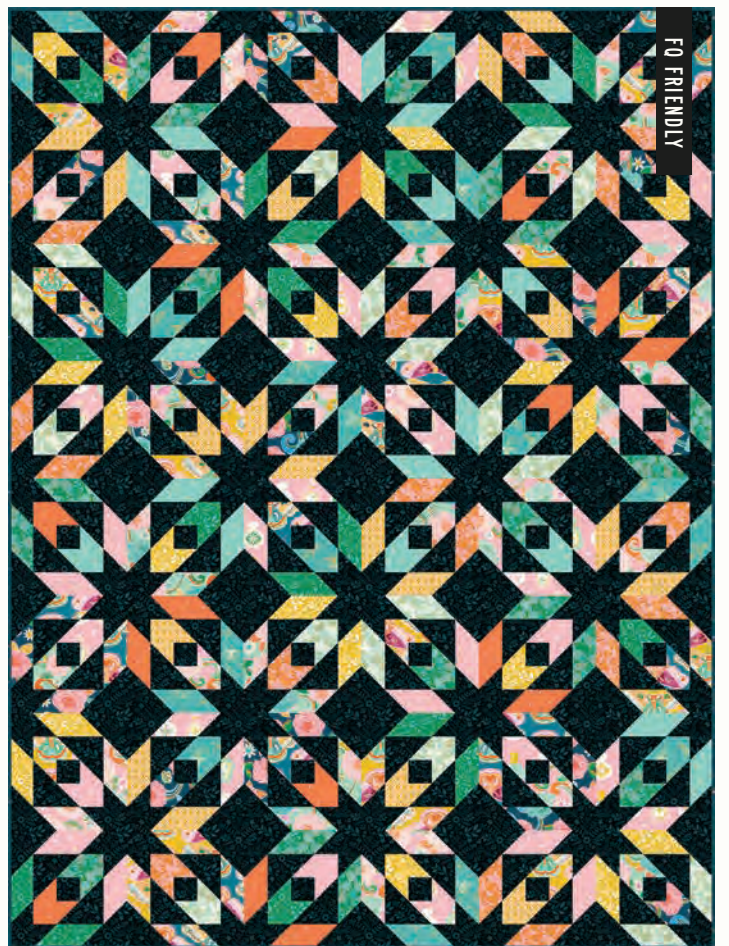
C.



D.



D.





ALEXIA MARCELLE ABEGG

In Moonglow, Alexia was inspired by the full moon shining on her garden at night. She wanted a range of soft and shaded earthy colors for this group, colors that would feel calming and inspiring but also rich in pigment. Moonglow is designed to coordinate with Alexia's Warp & Weft Moonglow woven collection, seen on pages 16-19. All prints shown at 25% scale.

MARCH 2023 DELIVERY

26 premium 100% Ruby Star Cotton prints

ASSORTMENTS & PRECUTS

ASSTRS4030

15

10

RS4030

FQ

JR

LC

PP

MC

SUGGESTED ADD IT UP COORDINATES & COMPLEMENTS

RS4005

12M

20

46

17

37

27

SUGGESTED SPECKLED COORDINATES & COMPLEMENTS

RS5027

64M

26M

63M

32

67M

16M

105M

SUGGESTED MODA BELLA SOLID COORDINATES & COMPLEMENTS

9900

124

292

328

224

48

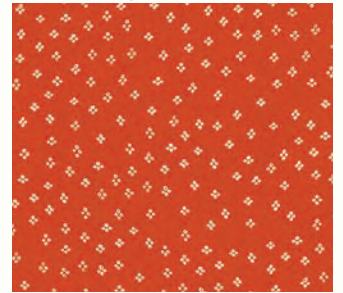
20

ADD IT UP | PLUM



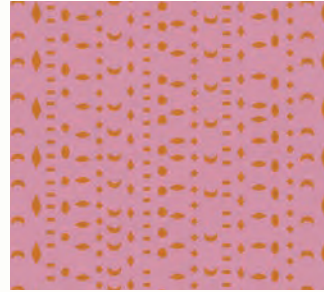
RS4005 72

HANDKERCHIEF | CAYENNE



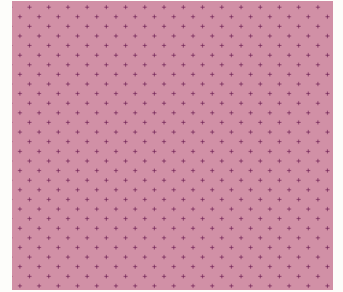
RS4030 25

PHASES | LAVENDER



RS4080 14

ADD IT UP | DEEP LAVENDER



RS4005 69

GARDEN SKETCHES | LUPINE



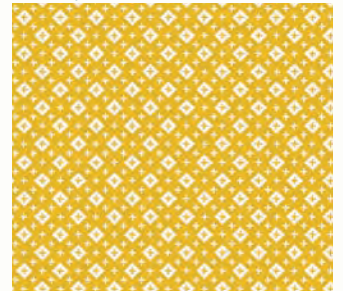
RS4078 13

MOONRISE DREAM | CARAMEL



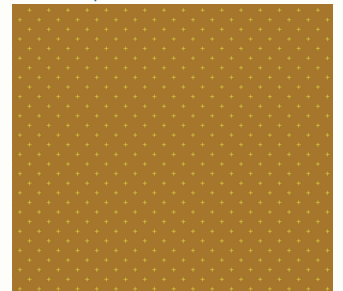
RS4077 11

BASKET | CACTUS



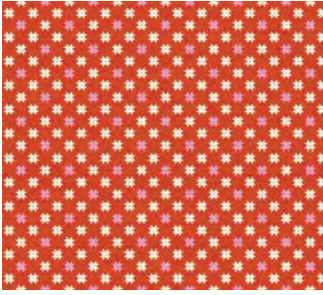
RS4082 11

ADD IT UP | SUEDE



RS4005 68

HEIRLOOM STAR | CAYENNE



RS4081 13

MOONRISE DREAM | LAVENDER



RS4077 12

HANDKERCHIEF | LAVENDER



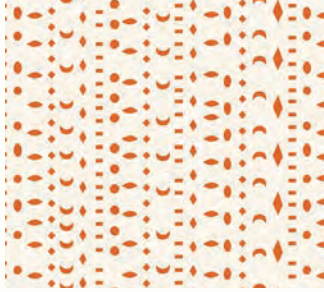
RS4030 26

ADD IT UP | CARAMEL



RS4005 67

PHASES | NATURAL



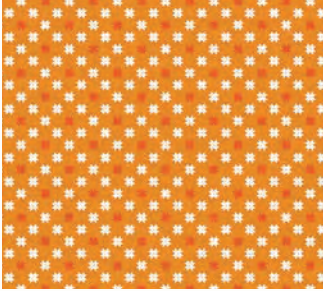
RS4080 11

MOONGLOW | EARTH



RS4079 13

HEIRLOOM STAR | CARAMEL



RS4081 12

GARDEN SKETCHES | NATURAL



RS4078 11

HEIRLOOM STAR | NATURAL



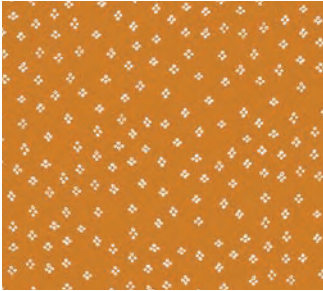
RS4081 11

HANDKERCHIEF | NATURAL



RS4030 21

HANDKERCHIEF | EARTH



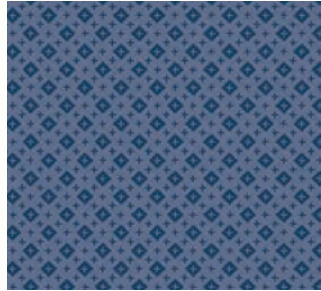
RS4030 23

MOONGLOW | NATURAL



RS4079 11

BASKET | PERIWINKLE



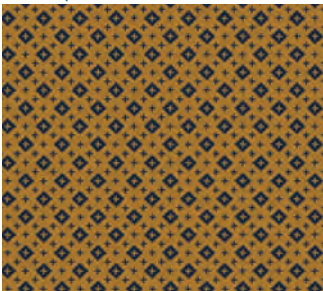
RS4082 18

MOONGLOW | PERIWINKLE



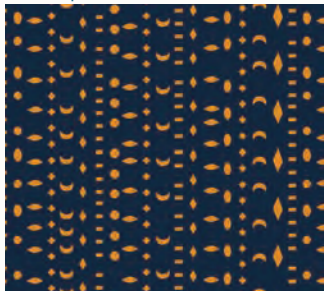
RS4079 15

BASKET | SUEDE



RS4082 15

PHASES | INDIGO



RS4080 15

MOONRISE DREAM | INDIGO

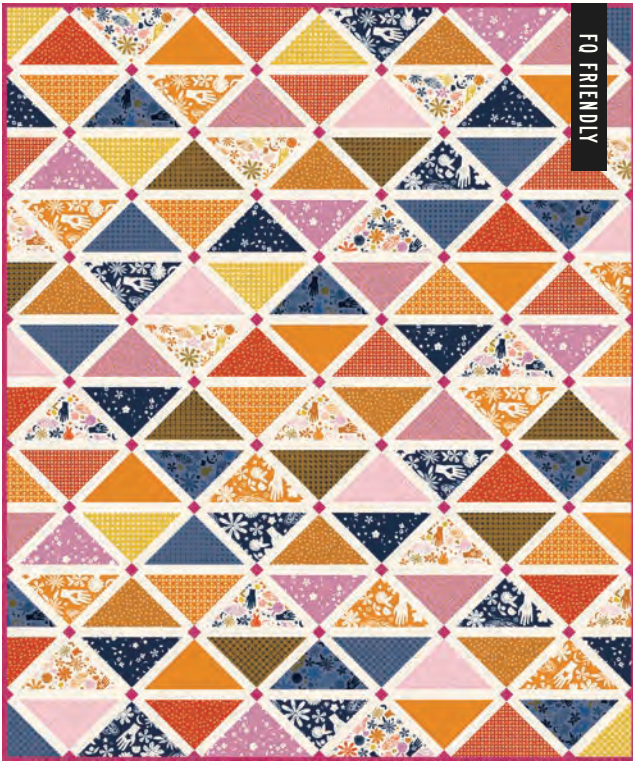


RS4077 13

GARDEN SKETCHES | INDIGO



RS4078 15



KTO 162 Kitchen Table Quilting | Nina 64" x 76"



KTO 151 Kitchen Table Quilting | Carly 60" x 72"





FREE Ruby Star Society | Moon Cake 54" x 54"

Make with just one Layer Cake!

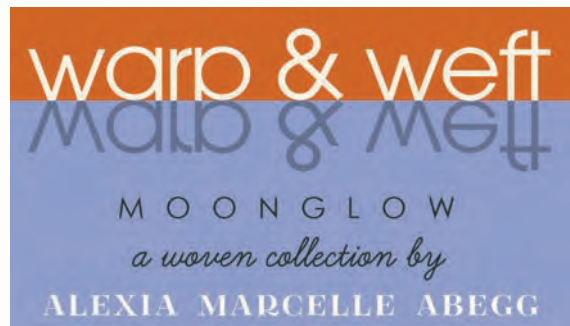


QL 126 Quilty Love | Southwest Sunshine

64" x 80"



ATK 181
Atkinson Designs
Stowaways



Warp & Weft Moonglow is the latest installment in Alexia's popular yarn dyed woven series. There are a number of new weaves that are beautiful and soft, along with a new palette of Cross Weave solids - the vibrant green is a color Alexia is very excited to introduce to the Warp & Weft palette. Mix with Moonglow (pages 12-15) for gorgeous, texturally layered projects. All fabrics shown at 25% scale.

MARCH 2023 DELIVERY

22 yarn-dyed woven 100% cottons

ASSORTMENTS & PRECUTS

ASSTRS4084

12

RS4084

FQ

LC

PP

Precuts do not include Chore Coat weight.

SUGGESTED ADD IT UP COORDINATES & COMPLEMENTS

RS4005

12M

20

42

46

17

37

27

SUGGESTED SPECKLED COORDINATES & COMPLEMENTS

RS5027

64M

26M

63M

32

67M

107M

105M

SUGGESTED MODA BELLA SOLID COORDINATES & COMPLEMENTS

9900

124

152

299

212

49

110

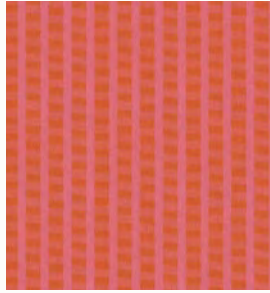
118

BREEZE | PECAN



RS4086 12

BAYSIDE | SORBET



RS4084 12

STITCH | SUEDE



RS4009 14

BOARDWALK | SUNRAYS



RS4064 14

BREEZE | GOLDENROD



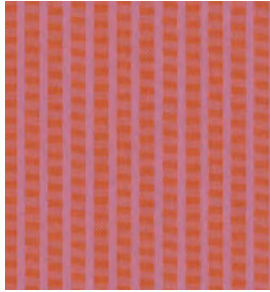
RS4086 11

LINEWORK LIGHTWEIGHT | PECAN



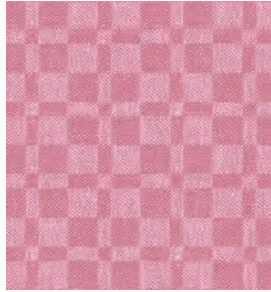
RS4038 14

BAYSIDE | LUPINE



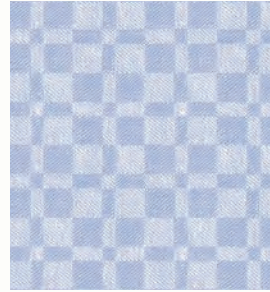
RS4084 11

PALAZZO | DAISY



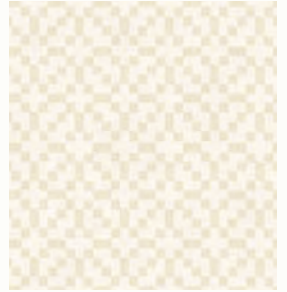
RS4085 11

PALAZZO | SKY



RS4085 12

HOLIDAY | NATURAL



RS4065 14

BREEZE | VINTAGE BLUE



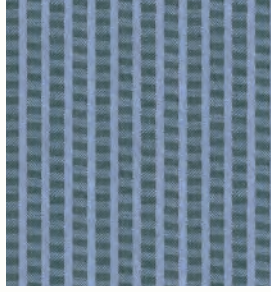
RS4086 13

BOARDWALK | DUSK



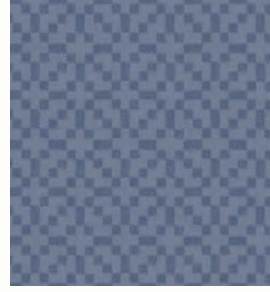
RS4064 15

BAYSIDE | DUSK



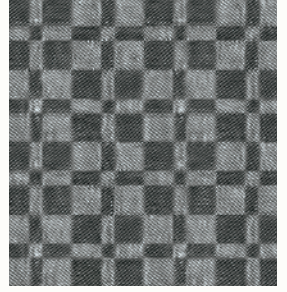
RS4084 13

HOLIDAY | PERIWINKLE



RS4065 15

PALAZZO | WOLF



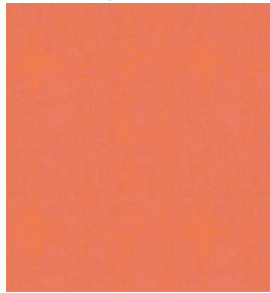
RS4085 13

CROSSWEAVE | LUPINE



RS4015 32

CROSSWEAVE | SORBET



RS4015 31

CROSSWEAVE | SKY



RS4015 28

CROSSWEAVE | FOREST



RS4015 29

CROSSWEAVE | NIGHT



RS4015 30

CHORE COAT STRIPE | WOLF

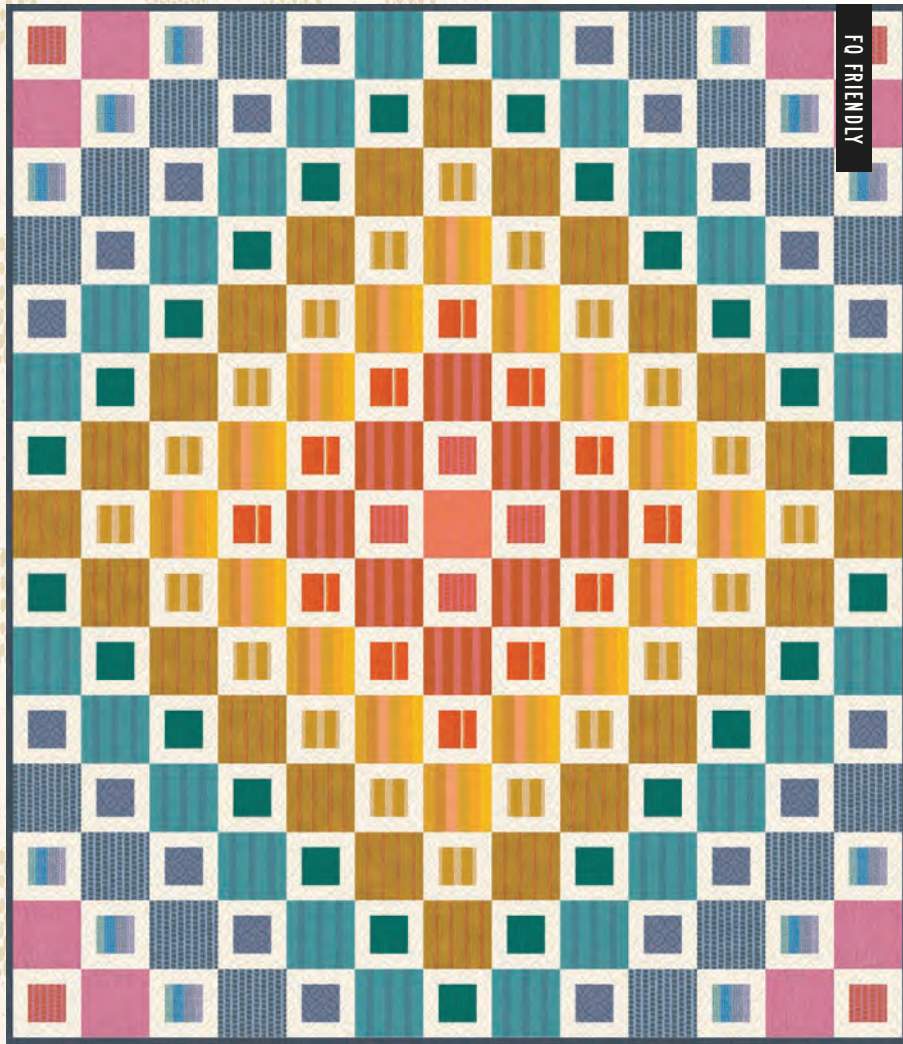


RS4036 14

CHORE COAT STRIPE | PECAN



RS4036 13



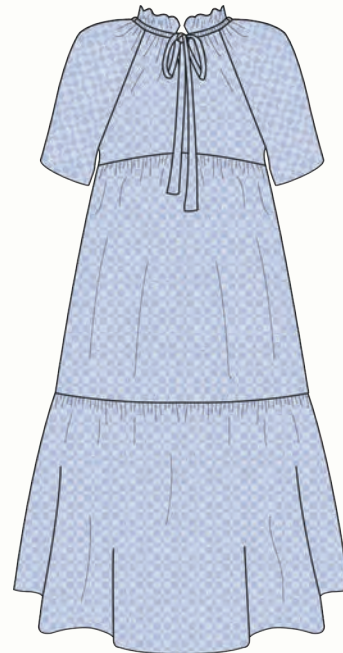
FO FRIENDLY

KTQ 135 Kitchen Table Quilting | Frances



58" x 67"

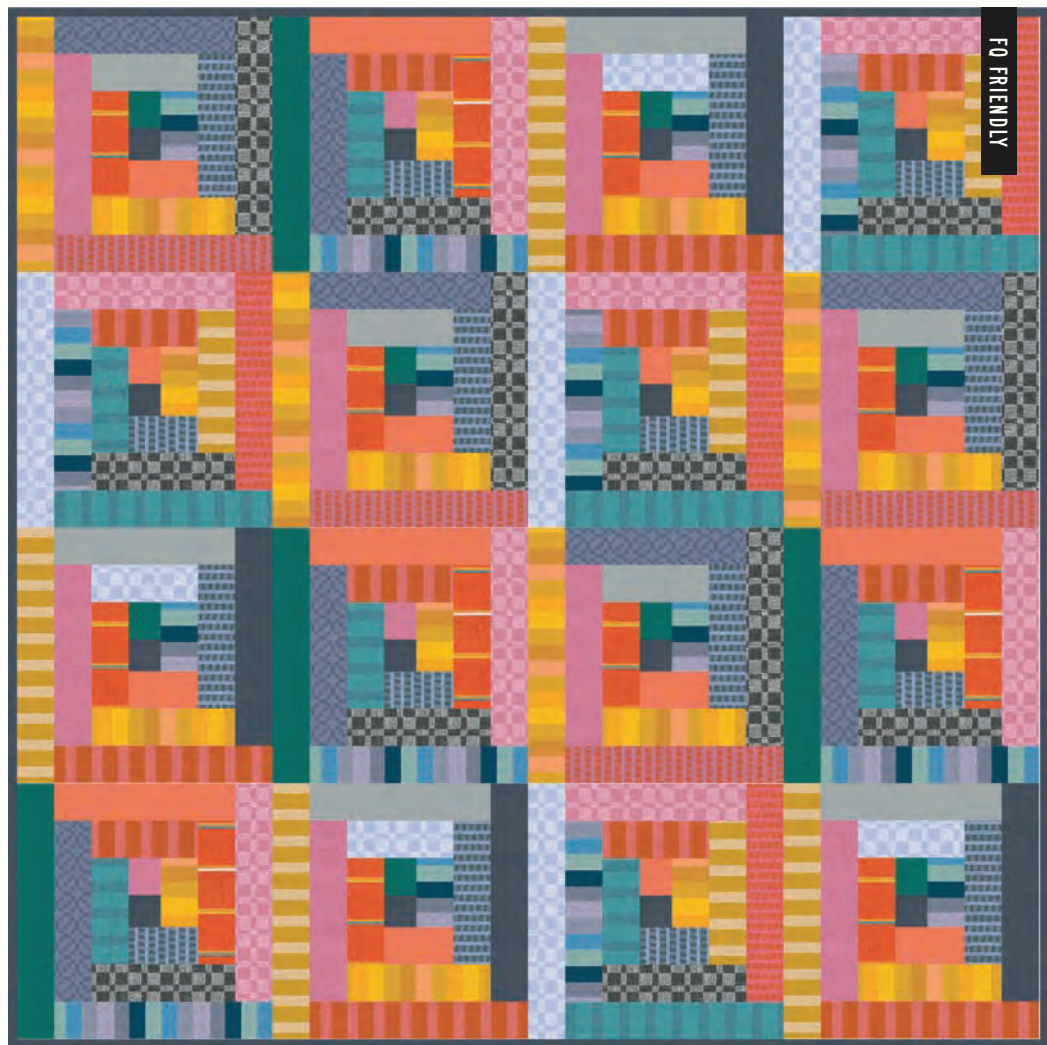
MM 015 Modernly Morgan | Little Lights



FPC 022
 Friday Pattern Company
 Wilder
 Fabrics (L to R):
 RS4064 14, RS4086 13,
 RS4085 12



60" x 60"



ISE 753 It's Sew Emma | 12" Log Cabin Foundation Paper

48" x 48"



AG 544

Noodlehead
Redwood Tote

Fabrics (L to R): RS4036 13 &
RS4086 11; RS4036 14 &
RS4064 14





+



ALEXIA MARCELLE ABEGG

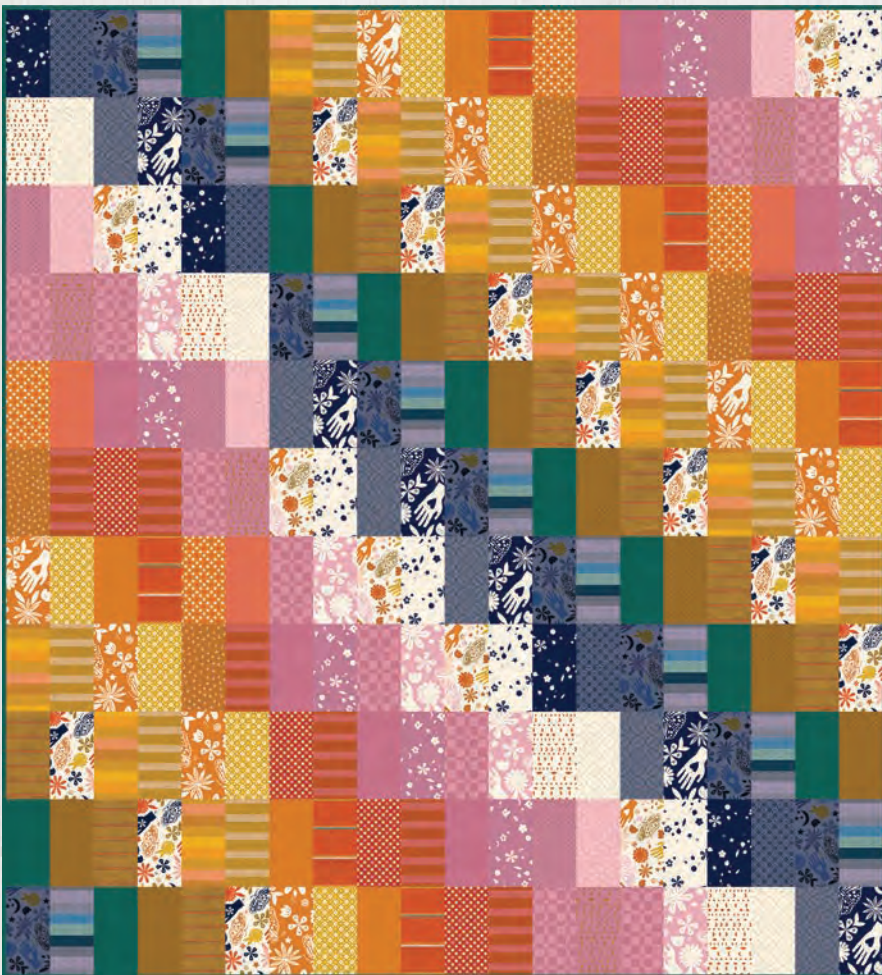
Alexia always designs and colors her Warp & Weft yarn dyed woven collections to coordinate with the printed group of the same name. Mixing wovens and prints creates some gorgeously textural, layered quilts. While you don't really need to employ any special techniques when mixing fabrics, here are a few tips that might make sewing them even easier:

Shorten your stitch length when piecing. Some of the Warp & Weft wovens have looser weaves than the printed cottons, and/or looser thread 'floats' on the wrong side. Shortening your stitch length (a few clicks or to about 2.0) will help make your seams more secure and help prevent them from fraying.

Sew with the looser weave on the bottom. Sometimes a more loosely woven fabric has a little more stretch than a more tightly woven fabric. Sewing with the looser weave on the bottom will allow the feed dogs to help ease the edges together so that the looser fabric doesn't stretch out while sewing.

Use pressing spray. Yarn dyed wovens can feel a little shiftier than Ruby Star cotton when sewing. If it's bothersome, press fabrics with pressing spray or spray starch while working with them to help stabilize.

AMA 100
Alexia Marcelle Abegg
Lucid
54" x 54"



Mix prints & wovens!

FREE
Ruby Star Society
Garden Moon
60" x 66"



★ OFFICIAL ★
**RUBY STAR
SOCIETY**

GUARANTEED
DELIGHTFUL GOODS



TEA TOWELS!

These sewing themed tea towels are as at home in the kitchen as they are framed for a little sewing room decor. **OCTOBER DELIVERY**



A

A | 2023 CALENDAR

by Melody Miller

100% COTTON 18"x24"

#: RS 7023 MULT: 6

B | SEW ESSENTIALS

by Rashida Coleman-Hale

100% COTTON 18"x24"

#: RS 7025 MULT: 6



B

C | BUTTONS

by Jen Hewett

100% COTTON 18"x24"

#: RS 7032 MULT: 6



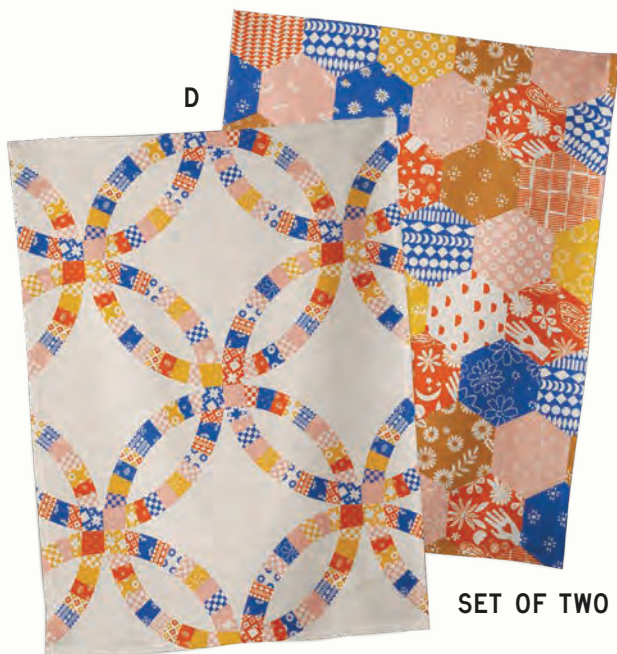
C

D | QUILT BLOCK

by Alexia Marcelle Abegg

100% COTTON SET OF 2 18"x24"

#: RS 7024 MULT: 4



D

SET OF TWO

SOCKS!

Three new sock designs with some of our most popular fabric prints (and a little humor). Digital mockups shown. One Size Fits Most, Cotton Blend. **OCTOBER DELIVERY**



STARRY

by Alexia Marcelle Abegg
#: RS SOCKS 57 MIN: 3



PRESSER FOOT

by Sarah Watts
#: RS SOCKS 58 MIN: 3



STRAWBERRY

by Kimberly Kight
#: RS SOCKS 59 MIN: 3

ZIPPER POUCHES!

These cotton zipper pouches are the perfect place for stashing notions, small projects, or fabric money. **OCTOBER DELIVERY**

A | SEW IT AWAY

by Rashida Coleman-Hale
10"x 6" #: RS 7029 MULT: 6



A

B | FABRIC MONEY

by Sarah Watts
10"x 6" #: RS 7030 MULT: 6



B

C | PATCHWORK

by Kimberly Kight
10"x 6" #: RS 7031 MULT: 6



C

CANVAS TOTES!

These totes are made with durable cotton canvas with webbing handles. Natural canvas totes have interior zip pocket. Black RSS Phoenix Tote is printed with gold metallic ink and fits an 18"x24" cutting mat - the perfect quilting retreat accessory!

OCTOBER DELIVERY



A



B

A | FAVORITE BLOCKS

by Kimberly Kight

16"x 19" #: RS 7028 MULT: 6

B | DAYDREAM

by Melody Miller

16"x 19" #: RS 7026 MULT: 6

C | NO UFOS

by Rashida Coleman-Hale

16"x 19" #: RS 7027 MULT: 6

D | RSS TOTE

by Ruby Star Society

20"x 28" #: RS 7034 MULT: 4



C



D

Fits an 18"x 24" cutting mat!



Interior zip pocket!

BACK



A | SEW THOUGHTFUL
 BOX OF 12 BLANK NOTECARDS
 by Rashida Coleman-Hale
 SIZE: 3"x5.5" #: RS 7046 MIN: 6



B | JEN HEWETT
 BOX OF 12 BLANK NOTECARDS
 by Jen Hewett
 SIZE: 3"x5.5" #: RS 7047 MIN: 6

ENAMEL ZIPPER PULLS!

Our second zipper pull release is here! Two of each designer's favorite and most popular designs have been alchemized into shiny metallic gold and enamel treasures. Pulls come on card backing in sets as shown, with lobster claw clasps. Collect them all!
OCTOBER DELIVERY



ALEXIA ZIPPER PULLS
 2 COUNT ON BACKING CARD
 #: RS 7042 MULT: 3



RASHIDA ZIPPER PULLS
 2 COUNT ON BACKING CARD
 #: RS 7039 MULT: 3



MELODY ZIPPER PULLS
 2 COUNT ON BACKING CARD
 #: RS 7038 MULT: 3



KIMBERLY ZIPPER PULLS
 2 COUNT ON BACKING CARD
 #: RS 7041 MULT: 3



SARAH ZIPPER PULLS
 2 COUNT ON BACKING CARD
 #: RS 7040 MULT: 3

NOTE CARDS!

New this season! These sewing & quilting themed notecards come in boxed sets with 6 each of 2 designs, plus envelopes. Blank inside. **OCTOBER DELIVERY**

NOTEBOOKS!

Our notebooks are perfect for sewing plans, grocery lists, and personal manifestos. Interior pages are a combination of grid, lined, and dot grid patterns. Large 80 pages/small 48 pages. **OCTOBER DELIVERY**

A | DAYDREAM

LARGE TWO-NOTEBOOK SET

by Melody Miller

SIZE: 5.5" x 8.5"

#: RS 7045 MIN: 6



B



B | BELOVED ANIMALS

LARGE TWO-NOTEBOOK SET

by Sarah Watts

SIZE: 5.5" x 8.5"

#: RS 7044 MIN: 6

C | HONEY

SMALL THREE-NOTEBOOK SET

by Alexia Marcelle Abegg

SIZE: 3.5" x 5.5"

#: RS 7043 MIN: 6



C



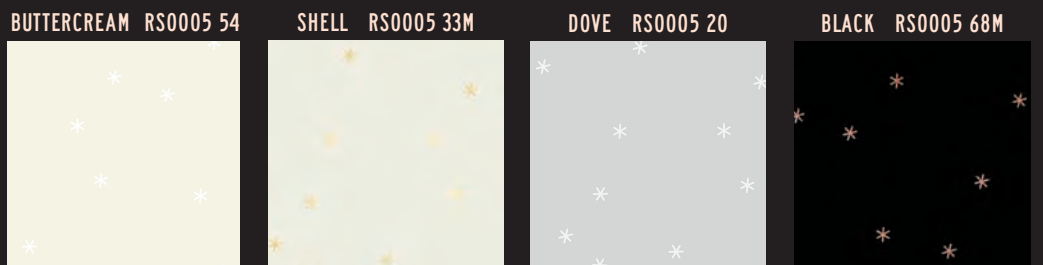
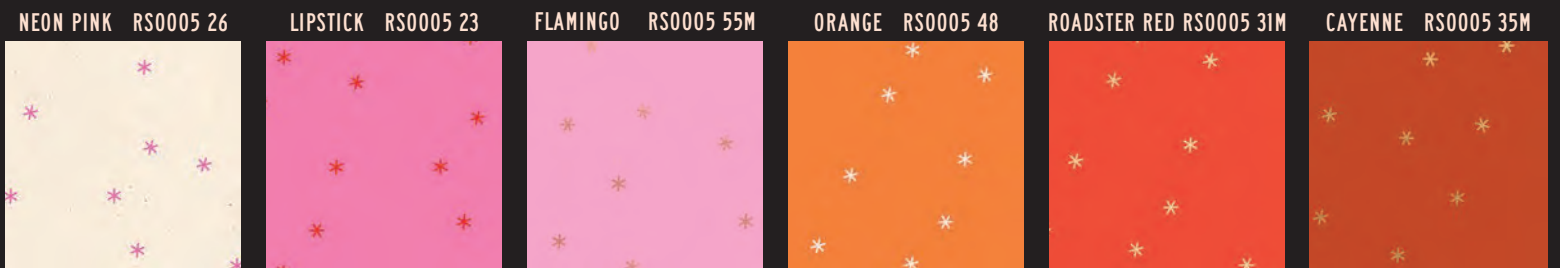
RUBY STAR SOCIETY BASICS

Browse the next few pages to see Ruby Star Society basics Add It Up, Brushed, Spark, Hole Punch Dot, Zip, Speckled, Sugar, and Starry. Use them as supporting prints for other collections, or mix and match to create beautiful standalone projects. All available now unless otherwise noted.

ADD IT UP
by
ALEXIA MARCELLE ABEGG



SPARK
by
MELODY MILLER



SOFT YELLOW RS4005 29



CITRON RS4005 45



BUTTERCUP RS4005 52



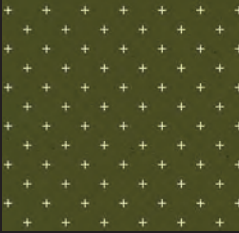
CACTUS RS4005 17



SOFT AQUA RS4005 33



MOSSY RS4005 23



BLUE SLATE RS4005 37



NAVY RS4005 27



BLACK GOLD RS4005 15M



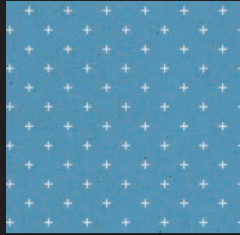
LAVENDER RS4005 20



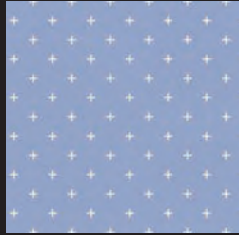
POLAR RS4005 39



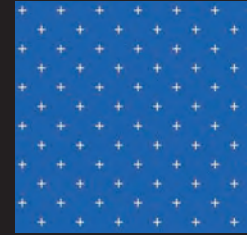
CHAMBRAY RS4005 47



DUSK RS4005 59



BLUE RIBBON RS4005 60



FROST RS0005 63M



TROPIC RS0005 59M



EVERGREEN RS0005 53M



JADE RS0005 65M



PINE RS0005 17



PEACOCK RS0005 37M



GOLDENROD RS0005 45



BUTTERSCOTCH RS0005 15



CARAMEL RS0005 57M



MOSS RS0005 76



SUCCULENT RS0005 77



MERMAID RS0005 79



OCEAN RS0005 36M



TURQUOISE RS0005 39



VINTAGE BLUE RS0005 40M



BRIGHT BLUE RS0005 12



EVENING RS0005 49M



SMOKE RS0005 67M



BRUSHED
by
SARAH WATTS

SNOW RS2005 12



GOLD RS2005 11M



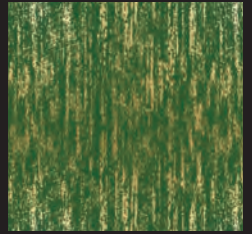
SOFT BLUE RS2005 16



SLATE GRAY RS2005 14M

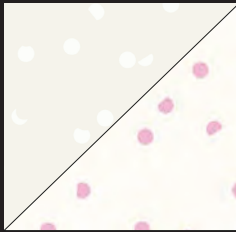


SARAH GREEN RS2005 31M



HOLE PUNCH DOT
by
KIMBERLY KIGHT

WHITE ON WHITE RS3025 11



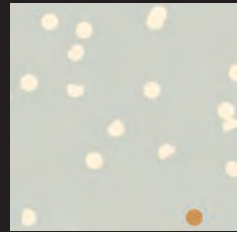
DOVE RS3025 35



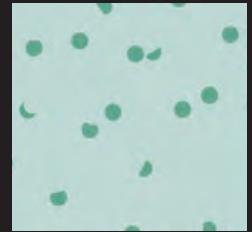
SANDBOX RS3025 33M



PEWTER RS3025 34M



POLAR RS3025 22



ORCHID RS3025 12

RUBY RS3025 32



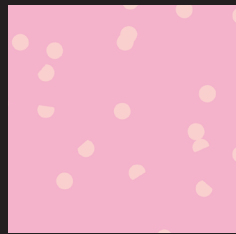
PECAN RS3025 14



STRAWBERRY RS3025 31



GEM RS3005 29



COTTON CANDY RS3025 28



OPAL RS3025 41



ZIP
by
RASHIDA COLEMAN HALE

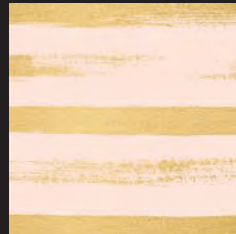
PALE PEACH RS1005 19



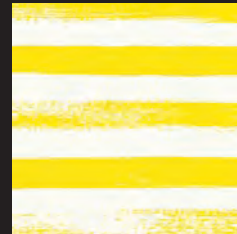
GOLD RS1005 24M



PALE PEACH RS1005 31M



LEMON YELLOW RS1005 25



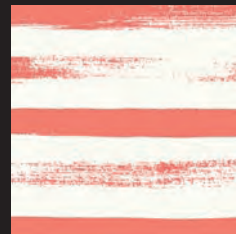
CITRON RS1005 40



ROADSTER RED RS1005 21



TANGERINE DREAM RS1005 41



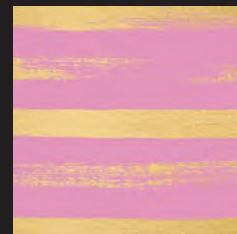
LUPINE RS1005 43



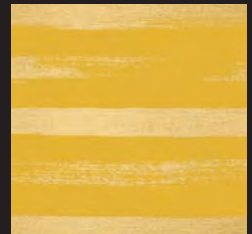
BERRY RS1005 15



KISS RS1005 32M



GOLDENROD RS1005 33M



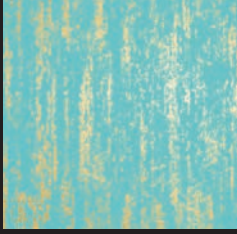
FIRE RS2005 19M



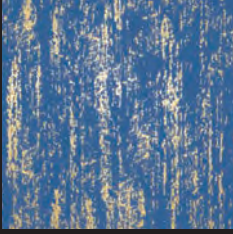
PURPLE VELVET RS2005 13



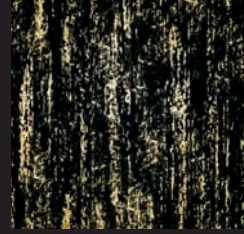
TURQUOISE RS2005 32M



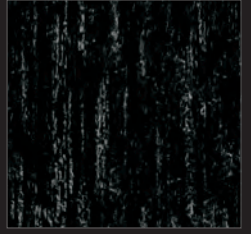
TWILIGHT RS2005 35M



ONYX RS2005 36M



BLACK RS2005 22



TURQUOISE RS3025 21



HYDRANGEA RS3025 43



WATERCRESS RS3025 23



BILLIARD RS3025 24



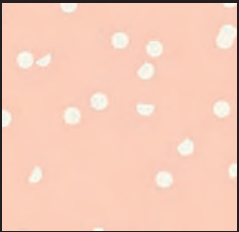
SMOKE RS3025 44



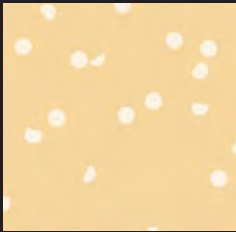
NAVY RS3025 15



PEACH RS3025 27



BUTTERNUT RS3025 25



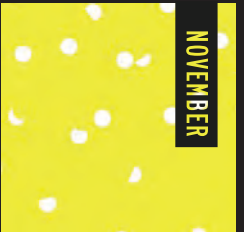
BANANAS RS3025 26



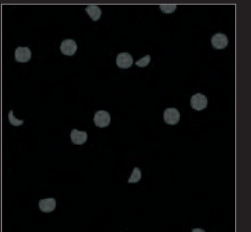
HONEY RS3025 13



HIGHLIGHT RS3025 42



BLACK RS3025 36



EMERALD GREEN RS1005 17



SUCCULENT RS1005 45



AQUA RS1005 11



FROST RS1005 37M



BLUE RIBBON RS1005 13



BLUE RASPBERRY RS1005 28



PEACOCK RS1005 35M



BLUE RASPBERRY RS1005 34M



BLACK RS1005 27



SUGAR
by
SARAH WATTS

BUTTERCREAM RS5069 11



NEON PINK RS5069 12



POTTERY RS5069 14



BLACK RS5069 32



BROCCOLINI RS5069 18



TURQUOISE RS5069 17



DENIM RS5069 27



TEAL RS5069 28



BLUEBELL RS5069 30



NAVY RS5069 36



STARRY
by
ALEXIA ABEGG

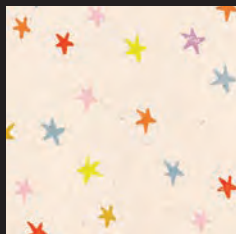
NEON PINK RS4006 11



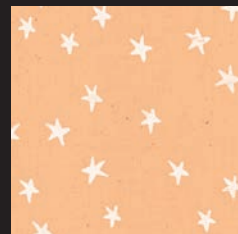
NATURAL BLACK RS4006 12



RAINBOW RS4006 13



WARM PEACH RS4006 17



POSY RS4006 14



SOFT AQUA RS4006 24



FROST RS4006 23

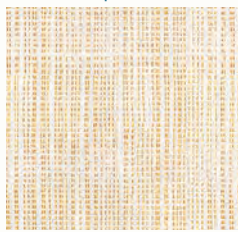


SOFT BLUE RS4006 28



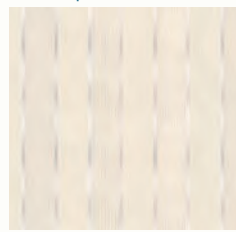
Fill your shelves with Alexia Abegg's Warp & Weft woven series! These fabrics make gorgeous quilts, garments, and just about anything else. **All skus pictured at right are in our warehouse and available to ship at once.**

CHORE COAT | GOLD



RS4008 15

JUBILEE | SHELL



RS4011 16

FLICKER | PINK



RS4012 13

PARADE | NAVY



RS4010 11

PARADE | PERSIMMON



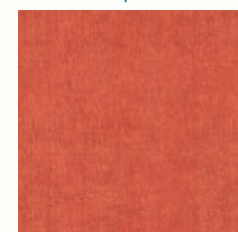
RS4010 12

FLICKER | PERSIMMON



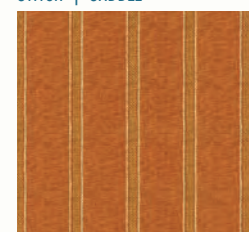
RS4012 14

CROSS WEAVE | PERSIMMON



RS4015 13

STITCH | SADDLE



RS4009 12

PEACH FIZZ RS5069 19



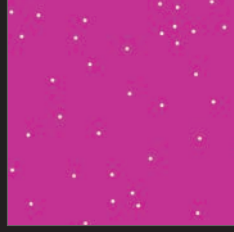
FLAMINGO RS5069 22



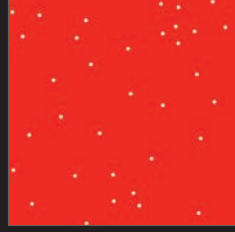
ROSE RS5069=23



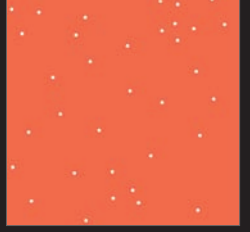
BERRY RS5069 24



RUBY RS5069 35



FLORIDA RS5069 20



CITRON RS5069 37



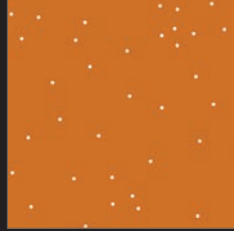
SUNSHINE RS5069 34



CACTUS RS5069 15



SADDLE RS5069 16



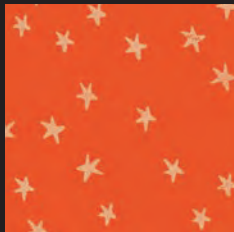
DARK PEONY RS4006 16



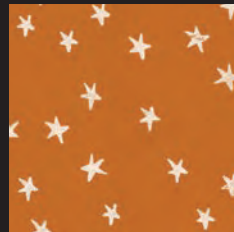
PAPAYA RS4006 18



WARM RED RS4006 19



SADDLE RS4006 20



SUEDE RS4006 21



GOLDENROD RS4006 22



DUSK RS4006 25



BLUEBELL RS4006 26M



BLACK GOLD RS4006 27M



JUBILEE | GRAY



RS4011 13

JUBILEE | SPRINKLES



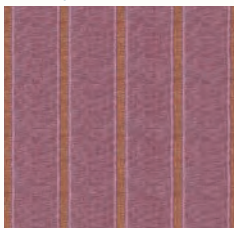
RS4011 11

FLICKER | LILAC



RS4012 11

STITCH | LILAC



RS4009 11

CROSS WEAVE | WINE TIME



RS4015 11

FLICKER | NAVY



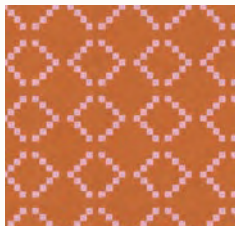
RS4012 12

MATINEE | EARTH



RS4013 11

PARADE | LAVENDER



RS4010 13

CROSS WEAVE | CACTUS



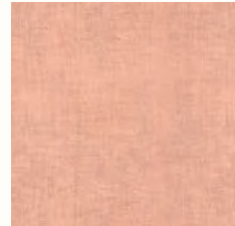
RS4015 14

MATINEE | DAHLIA



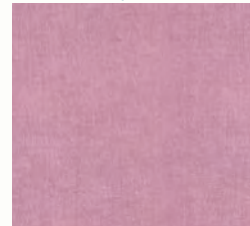
RS4013 12

CROSS WEAVE | DAHLIA



RS4015 16

CROSS WEAVE | LAVENDER



RS4015 12

SPECKLED
by
RASHIDA COLEMAN HALE

AVAILABLE NOW

Speckled is a paint splatter texture layered over a solid dyed Ruby Star Cotton base fabric, creating a rich, deep print with lots of dimension. This collection is even better than solids for supporting all of our Ruby Star Society collections. All skus are RS5027 [color number]. 108" wide fabrics are noted separately and come on 200 thread count cotton.

WHITE GOLD 14M



CONFETTI 15



SWEET CREAM 90



NEON PINK 16M



SUNSTONE 19M



PEACH 32



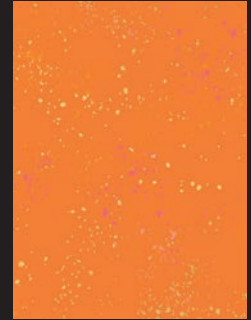
MELON 93M



CLEMENTINE 100M



BURNT ORANGE 98M



PARCHMENT 97M



SUNLIGHT 96M



CITRON 65M



SUNSHINE 71M



CACTUS 63M



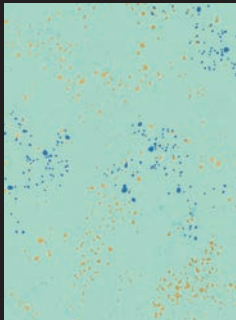
EARTH 26M



POLAR 101M



FROST 84M



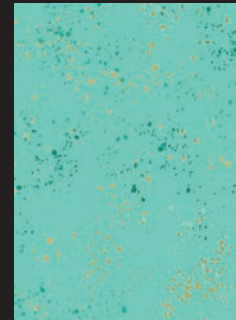
SOFT AQUA 70M



TURQUOISE 72M



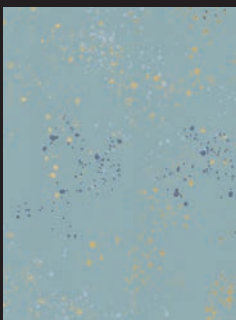
ICEBOX 81M



SUCCULENT 107M



SOFT BLUE 48M



DENIM 52M



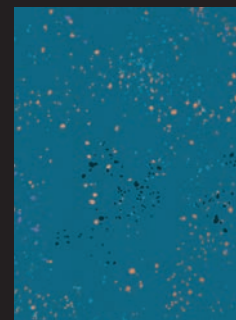
BLUE SLATE 108M



BRIGHT BLUE 50M



TEAL 53M



BLUE RIBBON 104M



108" WIDE RS5055 72M

SHELL 82M



NATURAL 18M



KHAKI 66M



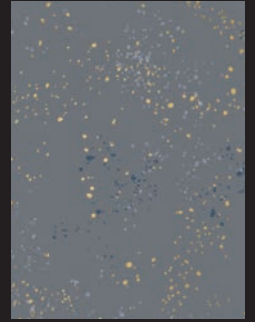
WOOL 76M



DOVE 59M



CLOUD 60M



108" WIDE RS5055 59M

PALE PINK 91M



COTTON CANDY 37M



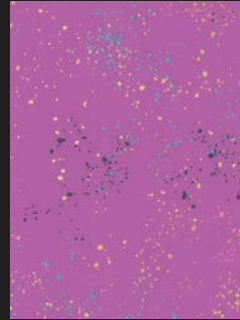
PEONY 67M



DAISY 41M



WITCHY 79M



BERRY 62M



108" WIDE RS5055 62M

SORBET 92M



STRAWBERRY 43M



FESTIVE 75M



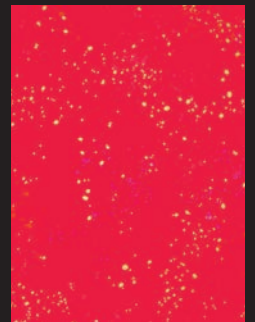
WARM RED 35M



POINSETTIA 94M



SCARLET 110M



EMERALD GREEN 74M



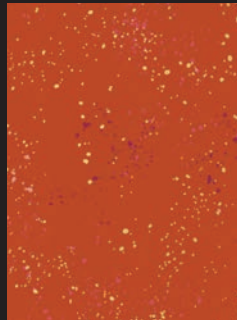
PINE 58M



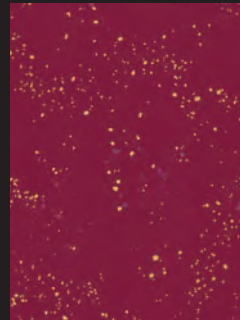
TEAL NAVY 55M



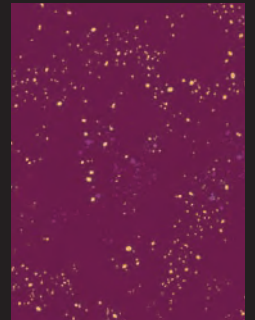
CAYENNE 64M



WINE TIME 36M



PURPLE VELVET 73M



BLUEBELL 109M

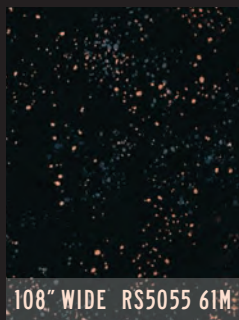


NAVY 105M



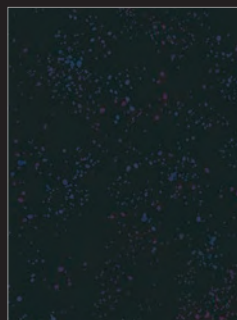
108" WIDE RS5055 105M

BLACK 61M

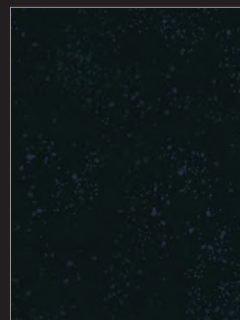


108" WIDE RS5055 61M

GALAXY 103



ONYX 102



★ RUBY STAR SOCIETY ★

in collaboration with



rubystarsociety.com

Follow @rubystarsociety on Instagram
for the most up to date announcements and inspiration!

Fabrics on front cover from Moonglow and Warp & Weft Moonglow by Alexia Marcelle Abegg.
Fabric on back cover by Kimberly Kight, from Achroma by Ruby Star Society.