



FALL 2022



contents

4	LIL BY KIMBERLY KIGHT
8	READING NOOK BY SARAH WATTS
12	SUNBEAM BY RASHIDA COLEMAN-HALE
16	HOME & GIFT
20	BASICS

Fabrics on front cover are from Sunbeam by Rashida Coleman-Hale (pgs 12-15)
Illustration done by Rashida Coleman-Hale

RSS PATCHWORK PANEL

RS5125

12 YD BOLT

PANEL IS 44.5" X 36"

MAY DELIVERY



★ RUBY STAR SOCIETY ★

PATCHWORK PANEL

★ PROJECTS WITH PURPOSE ★

The newest installment in the Projects with Purpose is the Patchwork Panel!

For every Patchwork Panel sold, \$5 will be donated to the **Jed Foundation**.

The Jed Foundation protects mental health and prevents suicide in teens and young adults in the United States.

We would also love to encourage any stockists of the Patchwork Panel to use the panel sales as an opportunity to do their own charitable fundraising, and consider donating some of their margin to the Jed Foundation or a nonprofit of their choice.



FALL 2022 PRECUTS

Below are the irresistible precuts we are offering with this release, from adorable mini charms to full bundles.



*fat quarter
bundle*

RS3053 FQ
(28 skus)



RS2075 FQ
(26 skus)



RS1056 FQ
(27 skus)



jelly roll™

RS3053 JR
(40 pcs)



RS2075 JR
(40 pcs)



RS1056 JR
(40 pcs)



layer cake™

RS3053 LC
(42 pcs)



RS2075 LC
(42 pcs)



RS1056 LC
(42 pcs)



*mini
charm*

RS3053 MC
(42 pcs)



RS2075 MC
(42 pcs)



RS1056 MC
(42 pcs)



charm pack

RS3053 PP
(42 pcs)



RS2075 PP
(42 pcs)



RS1056 PP
(42 pcs)



MAY
DELIVERY

APRIL
DELIVERY

MAY
DELIVERY



RS3053 12
SUNPATCH | CREAM SODA



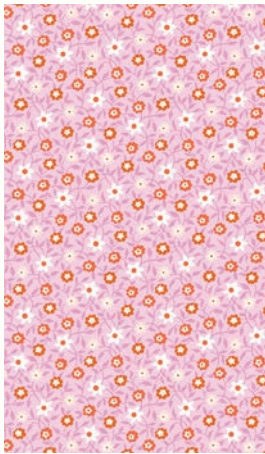
RS3059 11
POCKET POSY | BUTTERCREAM



RS3059 12
POCKET POSY | BUTTERNUT



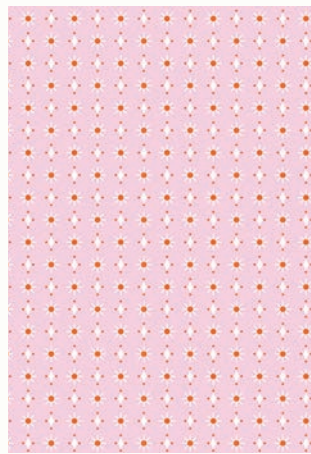
RS3054 11
CALICO APPLES | CREAM SODA



RS3055 13
CREEPING VINE | PEONY



RS3054 12
CALICO APPLES | KISS



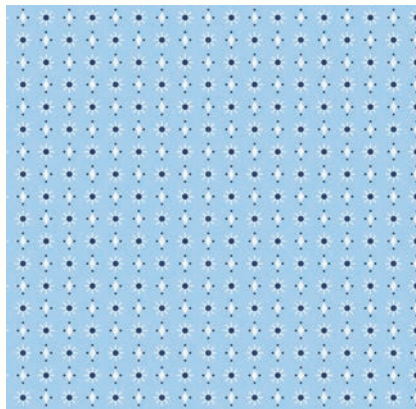
RS3058 14
LIL FOULARD | PEONY



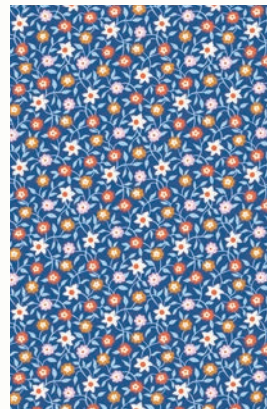
RS3053 14
SUNPATCH | PEONY



RS3056 16
RIBBON STRIPE | ALTITUDE



RS3058 15
LIL FOULARD | HYDRANGEA



RS3055 15
CREEPING VINE | BLUEBELL



RS3053 15
SUNPATCH | NAVY



MAY 2023 DELIVERY

22 premium 100% Ruby Star Cotton prints

ASSORTMENTS & PRECUTS

ASSTRS3053

15

10

RS3053

FQ

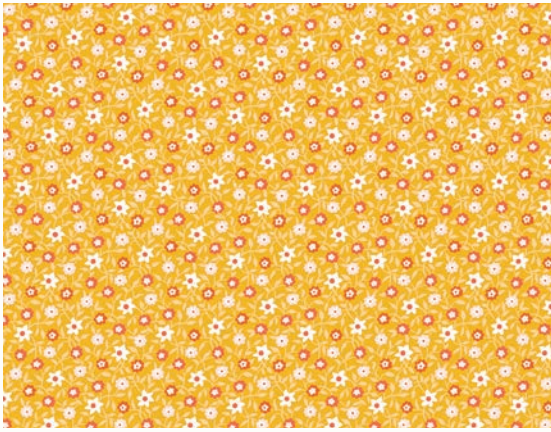
JR

LC

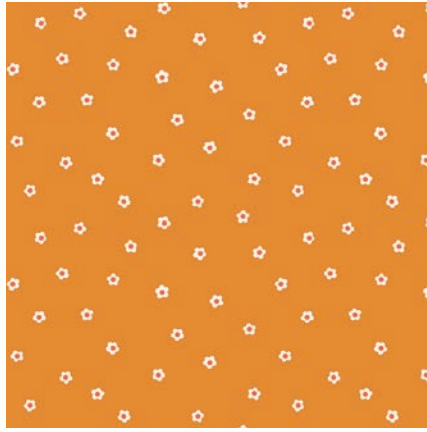
MC

PP

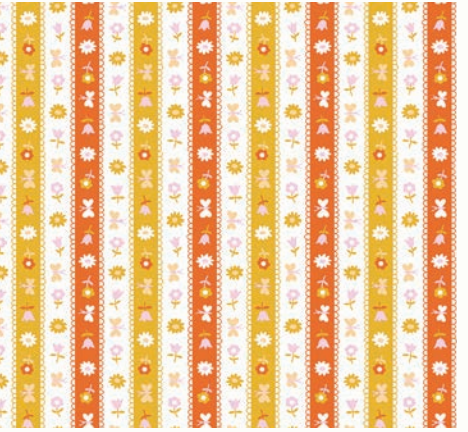
**SPECKLED
COORDINATES &
COMPLEMENTS**



RS3055 11
CREEPING VINE | CACTUS



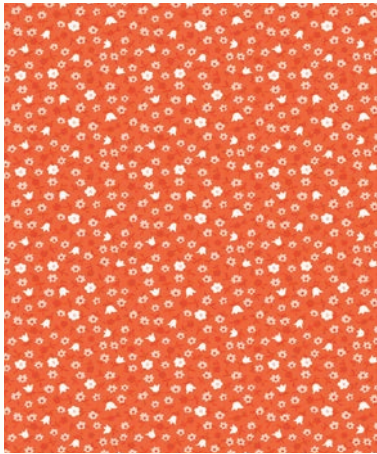
RS3059 13
POCKET POSY | CARAMEL



RS3056 11
RIBBON STRIPE | CACTUS



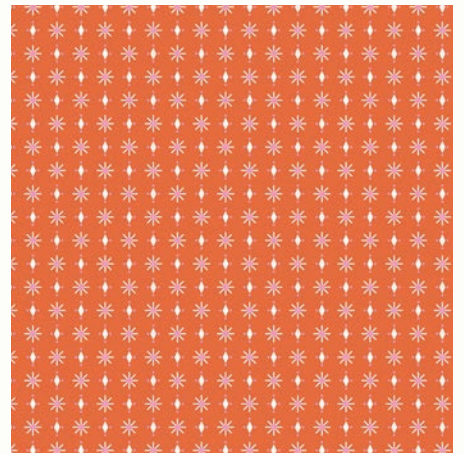
RS3056 13
RIBBON STRIPE | PEONY



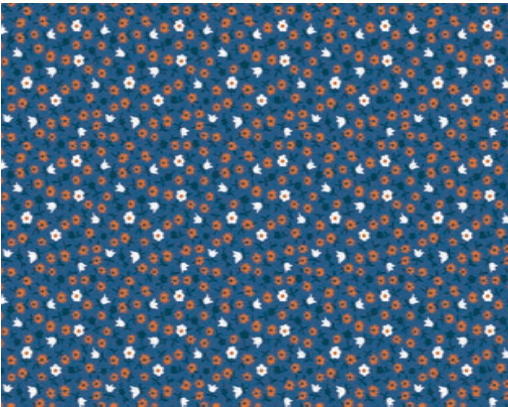
RS3057 14
CATALOG CALICO | FLORIDA



RS3057 13
CATALOG CALICO | PECAN



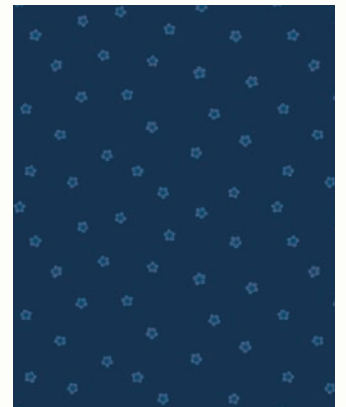
RS3058 11
LIL FOULARD | PECAN



RS3057 15
CREEPING VINE | BLUEBELL



RS3054 13
CALICO APPLES | BLUEBELL



RS3059 16
POCKET POSY | NAVY

WHITE GOLD 14M



PEONY 67M



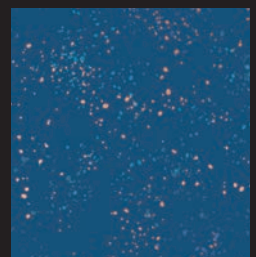
CACTUS 63M



EARTH 26M



BLUEBELL 109M





LSS 00006 Latifah Saafir | Glam Clam

60" x 60"



GS 16002 Grainline Studios | Tamarack Jacket



PPP 23 Pen and Paper Patterns | Apple Orchard 66" x 70"



FREE Ruby Star Society | Hexie Bag



PPP 26 Pen and Paper Patterns | Folk Bloom 56" x 69"



RS2075 11
MEOW MEOW | CREAM SODA



RS2079 11
POWDER | SHELL



RS2080 12
LIBRARY | GOLDENROD



RS2078 11
HEIRLOOM | WATERCRESS



RS2082 11
CHAMOMILE | GOLDENROD



RS2080 11
LIBRARY | MACARON



RS2079 12
POWDER | BALMY



RS2083 11L
MEOW MEOW CANVAS | MACARON



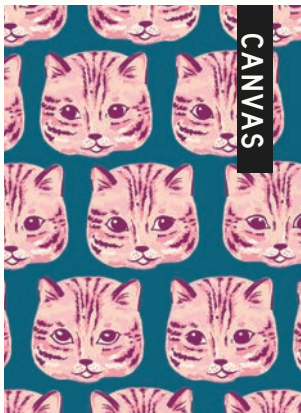
RS2075 12
MEOW MEOW | BALMY



RS2075 13
MEOW MEOW | MACARON



RS2076 12
TEA TIME | MACARON



RS2083 15L
MEOW MEOW CANVAS | GALAXY



RS2077 14
FANCY SQUIRREL | CELESTIAL



RS2079 13
POWDER | CELESTIAL



RS2075 14
MEOW MEOW | GALAXY



APRIL 2023 DELIVERY

26 premium 100% Ruby Star Cotton prints
3 30% linen & 70% cotton canvas prints

ASSORTMENTS & PRECUTS

ASSTRS2075

15

10

RS2075

FQ

JR

LC

MC

PP

**SPECKLED
COORDINATES &
COMPLEMENTS**



RS2077 11
FANCY SQUIRREL | GOLDENROD



RS2077 12
FANCY SQUIRREL | EARTH



RS2081 11
NOOK | EARTH



RS2083 13L
MEOW MEOW CANVAS | EARTH



RS2076 11
TEA TIME | BALMY



RS2082 12
CHAMOMILE | DAISY



RS2078 12
HEIRLOOM | MACARON



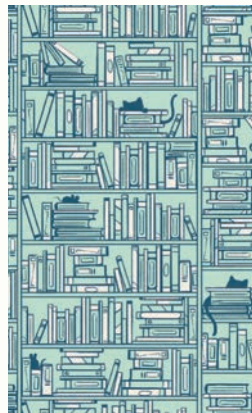
RS2078 13
HEIRLOOM | BERRY



RS2081 12
NOOK | PURPLE VELVET



RS2076 13
TEA TIME | SOFT AQUA



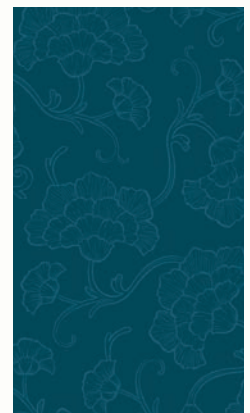
RS2080 14
LIBRARY | SOFT AQUA



RS2081 14
NOOK | SOFT AQUA



RS2082 13
CHAMOMILE | SOFT AQUA



RS2079 14
POWDER | PEACOCK

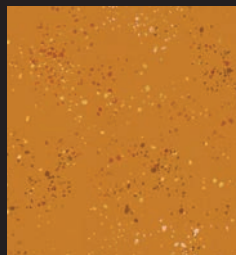
COTTON CANDY 37M



SOFT AQUA 70M



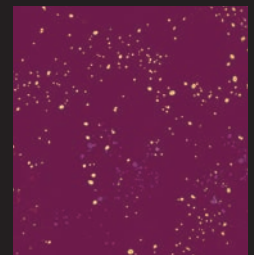
EARTH 26M



BERRY 62M



PURPLE VELVET 73M





AP BN105 RSS Angela Pingel | Book Nerd

54" x 66"



FREE PATTERN Ruby Star Society | Cat Lady





60" x 60"



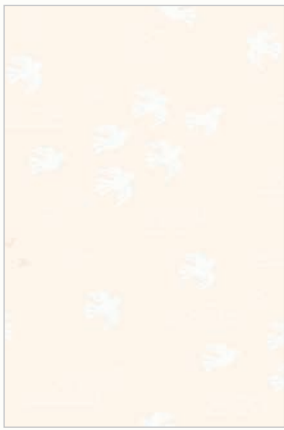
LST 125
Sallie Tomato | Connie



fq friendly

QL 121 Quilty Love | Triangle Peaks

56" x 72"



RS1058 12
IN FLIGHT | NATURAL



RS1063 11
BEAMING | NATURAL



RS1060 12
GAME PIECES | NATURAL



RS1056 11
REBEL REBEL | NATURAL



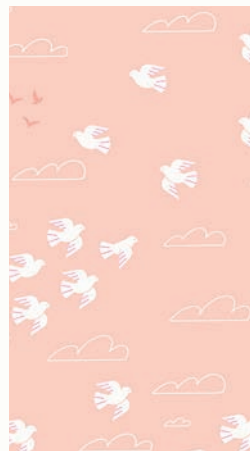
RS1062 18
ECLIPSE | CASHMERE



RS1059 16
WILD FLOWER CHILD | PEACH



RS1061 15
FOLDING | PEACH



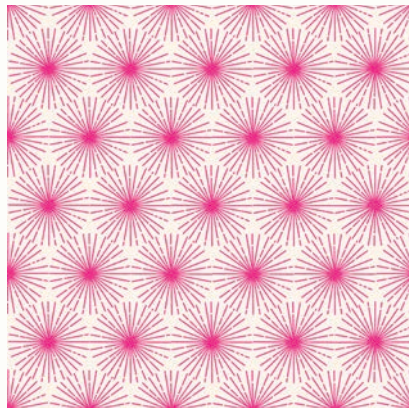
RS1058 14
IN FLIGHT | PEACH



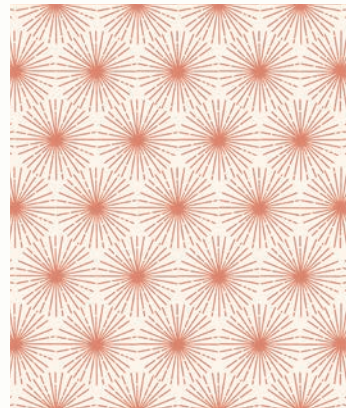
RS1059 12
WILD FLOWER CHILD | SAND



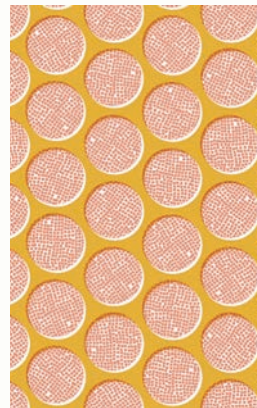
RS1060 13
GAME PIECES | SAND



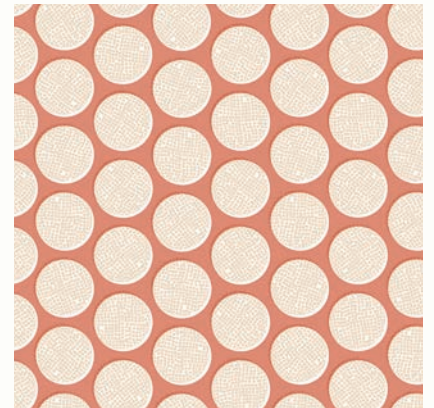
RS1063 15
BEAMING | HOT PINK



RS1063 16
BEAMING | TERRA COTTA



RS1062 14
ECLIPSE | CACTUS



RS1062 16
ECLIPSE | TERRA COTTA



MAY 2023 DELIVERY

27 premium 100% Ruby Star Cotton prints

ASSORTMENTS & PRECUTS

ASSTRS1056

15

10

RS1056

FQ

JR

LC

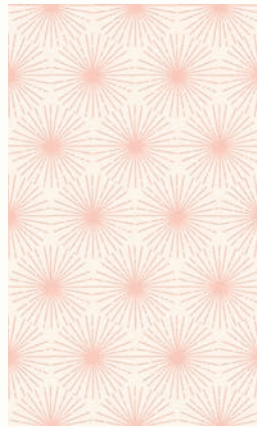
MC

PP

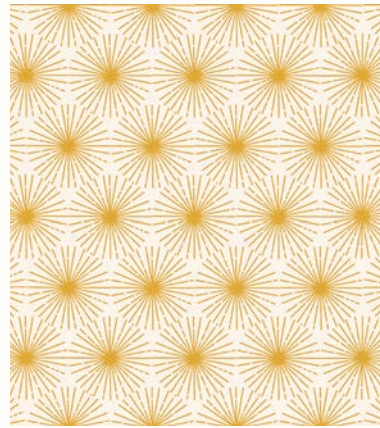
**SPECKLED
COORDINATES &
COMPLEMENTS**



RS1059 11
WILD FLOWER CHILD | NATURAL



RS1063 14
BEAMING | PEACH



RS1063 13
BEAMING | CACTUS



RS1060 15
GAME PIECES | PALE PEACH



RS1057 12
BURNING BRIGHT | NATURAL



RS1057 13
BURNING BRIGHT | CACTUS



RS1058 13
IN FLIGHT | CACTUS



RS1061 13
FOLDING | CACTUS



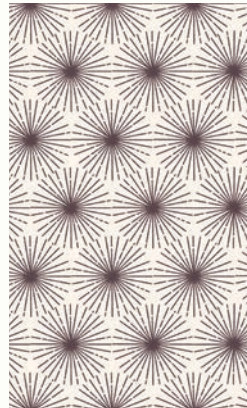
RS1056 13
REBEL REBEL | CACTUS



RS1057 15
BURNING BRIGHT | TERRA COTTA



RS1056 14
REBEL REBEL | TERRA COTTA



RS1063 18
BEAMING | CAVIAR



RS1061 17
FOLDING | CAVIAR

WHITE GOLD 14M



NATURAL 18M



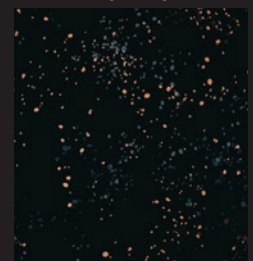
PEACH 32



CACTUS 63M



BLACK 61M





MM 008 Modernly Morgan | Starshine 66" x 66"



ES 532PKT Everyday Stitches | Picket Stars 67" x 81"



SL N126 Sew Liberated | Matcha Top



QS 20008 Quiltsmart | Lone Star 58" x 58"



KTQ 163 Kitchen Table Quilt | Orla 56" x 70"



fq friendly



QL 144 64" x 72"
Happy Stripes | Quilty Love

★ OFFICIAL ★

RUBY STAR SOCIETY

GUARANTEED
DELIGHTFUL GOODS



NOTIONS SNACK BOX

by Sarah Watts

#: RS TIN 64 MULT: 6

7.75" X 6" X 2.75"



AFRICAN DAISY KNITTING BAG

by Jen Hewett

100% COTTON SIZE: 12" X 13"

#:RS7006 MULT: 6

MOONGLOW SEWING IRONING BOARD COVER

by Alexia Marcelle Abegg

100% COTTON SIZE: 20" x 50"

#: RS7007 MIN: 2



WIDE

NOTION TO RISE IRONING BOARD COVER

by Ruby Star Society

100% COTTON SIZE: 15" x 54"

#: RS965 14 MIN: 2



STANDARD



STRAWBERRY

by Kimberly Kight

#: RS SOCKS 59 MIN: 3

SOCKS

One Size Fits Most, Cotton Blend.

OCTOBER DELIVERY



TANGRAMS

by Rashida Coleman-Hale

#: RS SOCKS 53 MIN: 3



PRESSER FOOT

by Sarah Watts

#: RS SOCKS 58 MIN: 3



STARRY

by Alexia Marcelle Abegg

#: RS SOCKS 57 MIN: 3



NOTION TO RISE

by Ruby Star Society

#: RS SOCKS 51 MIN: 3

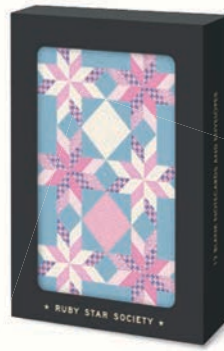
NOTECARDS

These sewing & quilting themed notecards come in boxed sets with 6 each of 2 designs, plus envelopes. Blank inside.

OCTOBER DELIVERY



A



B



A | SEW THOUGHTFUL

BOX OF 12 BLANK NOTECARDS

by Rashida Coleman-Hale

SIZE: 3"x5.5" #: RS 7046 MIN: 6

B | JEN HEWETT

BOX OF 12 BLANK NOTECARDS

by Jen Hewett

SIZE: 3"x5.5" #: RS 7047 MIN: 6

ENAMEL ZIPPER PULLS

Two of each designer's favorite designs have been made into gold and enamel treasures. Pulls come on card backing in sets as shown, with lobster claw clasps.

OCTOBER DELIVERY



ALEXIA ZIPPER PULLS
2 COUNT ON BACKING CARD
#: RS 7042 MULT: 3



RASHIDA ZIPPER PULLS
2 COUNT ON BACKING CARD
#: RS 7039 MULT: 3



MELODY ZIPPER PULLS
2 COUNT ON BACKING CARD
#: RS 7038 MULT: 3



KIMBERLY ZIPPER PULLS
2 COUNT ON BACKING CARD
#: RS 7041 MULT: 3



SARAH ZIPPER PULLS
2 COUNT ON BACKING CARD
#: RS 7040 MULT: 3

NOTEBOOKS

Interior pages are a combination of grid, lined, and dot grid patterns. Large 80 pages/small 48 pages.

OCTOBER DELIVERY



DAYDREAM

LARGE TWO-NOTEBOOK SET

by Melody Miller

SIZE: 5.5" x 8.5"

#: RS 7045 MIN: 6



BELOVED ANIMALS

LARGE TWO-NOTEBOOK SET

by Sarah Watts

SIZE: 5.5" x 8.5"

#: RS 7044 MIN: 6

HONEY

SMALL THREE-NOTEBOOK SET

by Alexia Marcelle Abegg

SIZE: 3.5" x 5.5"

#: RS 7043 MIN: 6





RUBY STAR SOCIETY BASICS

Browse the next few pages to see Ruby Star Society basics Add It Up, Brushed, Spark, Hole Punch Dot, Zip, Speckled, Sugar, and Starry. Use them as supporting prints for other collections, or mix and match to create beautiful standalone projects. All available now unless otherwise noted.

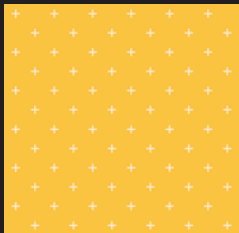
ADD IT UP *by* ALEXIA MARCELLE ABEGG



SPARK *by* MELODY MILLER



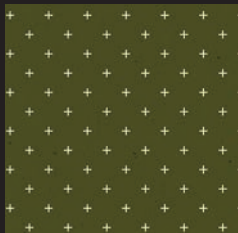
BUTTERCUP RS4005 52



CACTUS RS4005 17



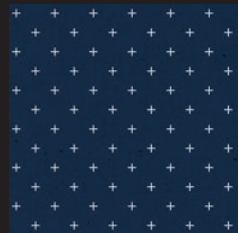
MOSSY RS4005 23



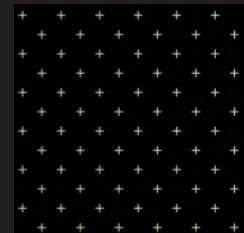
BLUE SLATE RS4005 37



NAVY RS4005 27



BLACK GOLD RS4005 15M



MELON RS4005 42



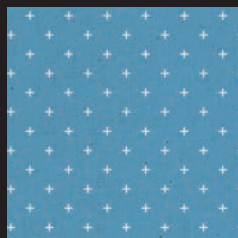
LAVENDER RS4005 20



POLAR RS4005 39



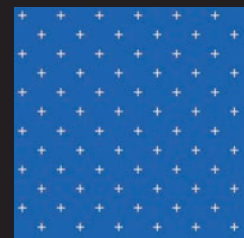
CHAMBRAY RS4005 47



DUSK RS4005 59



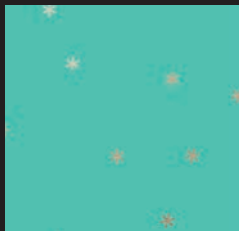
BLUE RIBBON RS4005 60



FROST RS0005 63M



TROPIC RS0005 59M



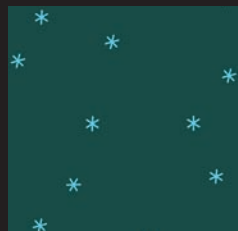
EVERGREEN RS0005 53M



JADE RS0005 65M



PINE RS0005 17



PEACOCK RS0005 37M



GOLDENROD RS0005 45



BUTTERSCOTCH RS0005 15



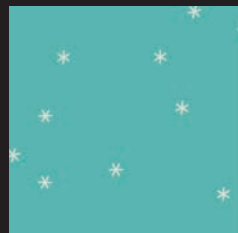
CARAMEL RS0005 57M



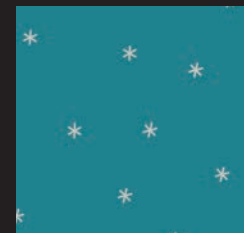
MOSS RS0005 76



SUCCULENT RS0005 77



MERMAID RS0005 79



OCEAN RS0005 36M



TURQUOISE RS0005 39



VINTAGE BLUE RS0005 40M



BRIGHT BLUE RS0005 12



EVENING RS0005 49M



SMOKE RS0005 67M

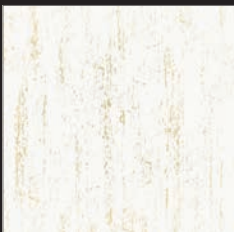


BRUSHED
by
SARAH
WATTS

SNOW RS2005 12



GOLD RS2005 11M



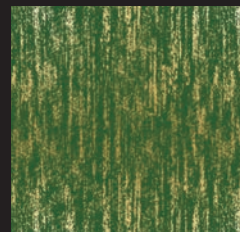
SOFT BLUE RS2005 16



SLATE GRAY RS2005 14M

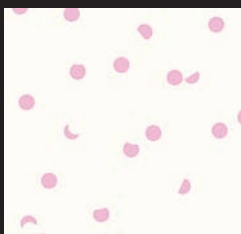


SARAH GREEN RS2005 31M

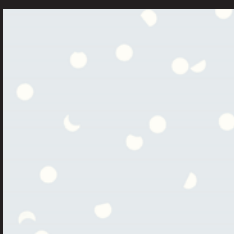


HOLE PUNCH
DOT
by
KIMBERLY
KIGHT

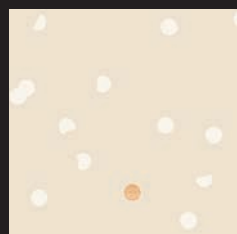
ORCHID RS3025 12



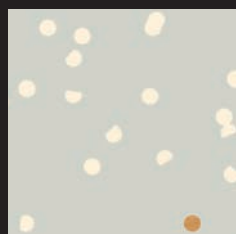
DOVE RS3025 35



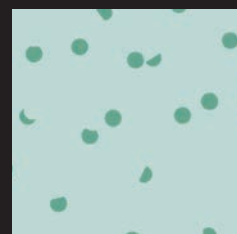
SANDBOX RS3025 33M



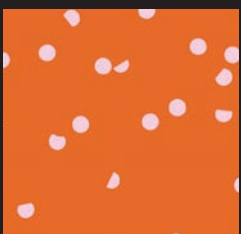
PEWTER RS3025 34M



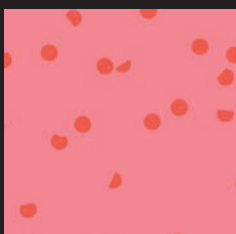
POLAR RS3025 22



PECAN RS3025 14



STRAWBERRY RS3025 31



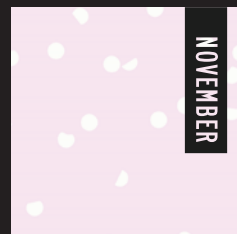
GEM RS3005 29



COTTON CANDY RS3025 28



OPAL RS3025 41

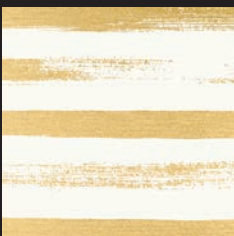


ZIP
by
RASHIDA
COLEMAN HALE

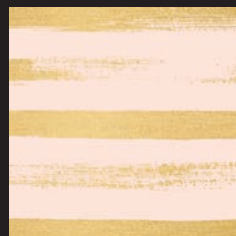
PALE PEACH RS1005 19



GOLD RS1005 24M



PALE PEACH RS1005 31M



LEMON YELLOW RS1005 25



CITRON RS1005 40



ROADSTER RED RS1005 21



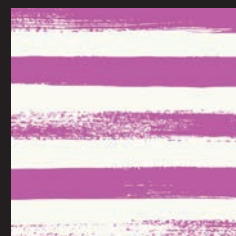
TANGERINE DREAM RS1005 41



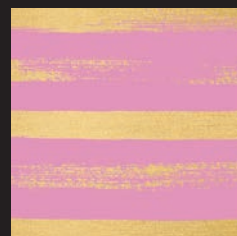
LUPINE RS1005 43



BERRY RS1005 15



KISS RS1005 32M



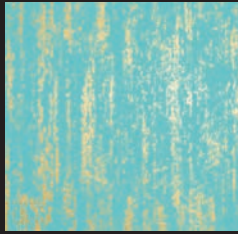
FIRE RS2005 19M



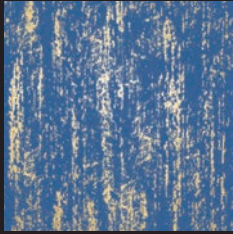
PURPLE VELVET RS2005 13



TURQUOISE RS2005 32M



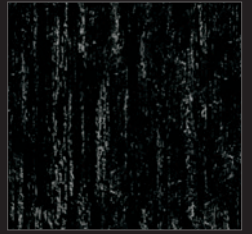
TWILIGHT RS2005 35M



ONYX RS2005 36M



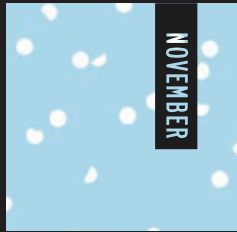
BLACK RS2005 22



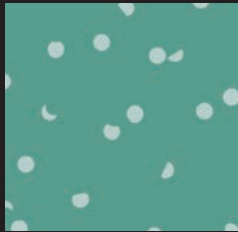
TURQUOISE RS3025 21



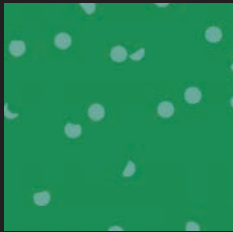
HYDRANGEA RS3025 43



WATERCRESS RS3025 23



BILLIARD RS3025 24



SMOKE RS3025 44



PEACH RS3025 27



BUTTERNUT RS3025 25



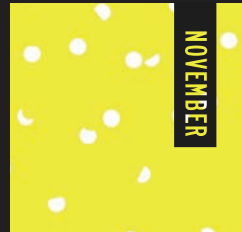
BANANAS RS3025 26



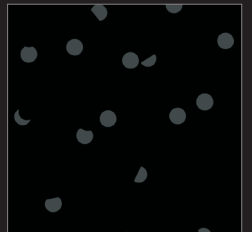
HONEY RS3025 13



HIGHLIGHT RS3025 42



BLACK RS3025 36



EMERALD GREEN RS1005 17



SUCCULENT RS1005 45



AQUA RS1005 11



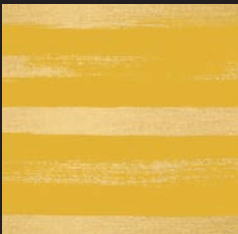
FROST RS1005 37M



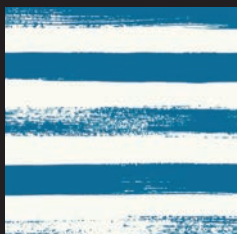
BLUE RIBBON RS1005 13



GOLDENROD RS1005 33M



BLUE RASPBERRY RS1005 28



PEACOCK RS1005 35M



BLUE RASPBERRY RS1005 34M



BLACK RS1005 27



SUGAR
by
SARAH WATTS

CITRON RS5069 37



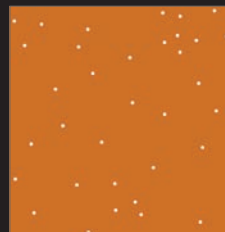
SUNSHINE RS5069 34



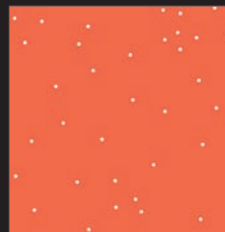
CACTUS RS5069 15



SADDLE RS5069 16

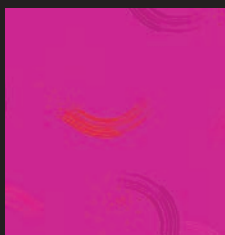


FLORIDA RS5069 20

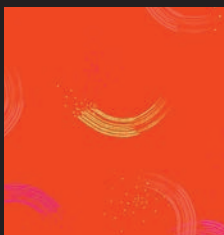


TWIRL
by
SARAH WATTS

BERRY RS2065 30



FIRE RS2065 26M



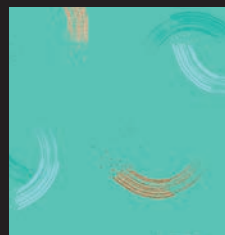
JUNE RS2065 27M



PEONY RS2065 29M

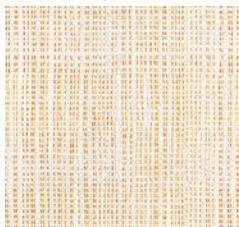


TROPIC RS2065 23M



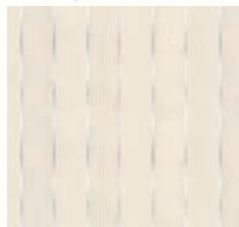
Fill your shelves with Alexia Abegg's Warp & Weft woven series! These fabrics make gorgeous quilts, garments, and just about anything else. **All skus pictured at right are in our warehouse and available to ship at once.**

CHORE COAT | GOLD



RS4008 15

JUBILEE | SHELL



RS4011 16

FLICKER | PINK



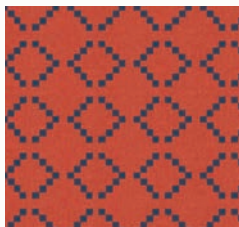
RS4012 13

PARADE | NAVY



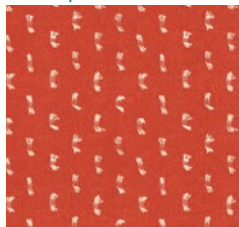
RS4010 11

PARADE | PERSIMMON



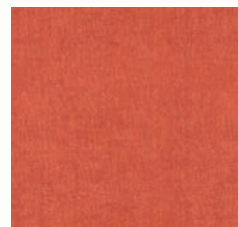
RS4010 12

FLICKER | PERSIMMON



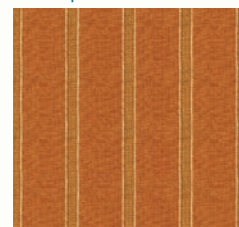
RS4012 14

CROSS WEAVE | PERSIMMON



RS4015 13

STITCH | SADDLE



RS4009 12



LIMITED AVAILABILITY,
*get it now while
supply lasts!*

COTTON | BLACK



RS4008 16

COTTON | BLUE RIBBON



RS4008 17

STRIPE | SUNSET



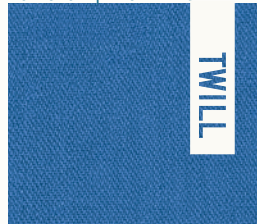
RS4068 11

WORKSHOP | BLACK



RS4067 11

WORKSHOP | BLUE RIBBON



RS4067 12

WORKSHOP TWILL | SADDLE



RS4067 14

WORKSHOP | PINE



RS4067 13



JUBILEE | SPRINKLES



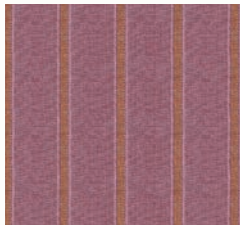
RS4011 11

FLICKER | LILAC



RS4012 11

STITCH | LILAC



RS4009 11

CROSS WEAVE | WINE TIME



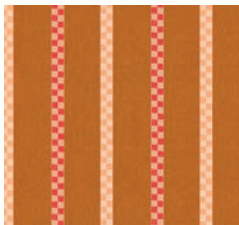
RS4015 11

FLICKER | NAVY



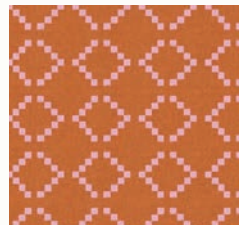
RS4012 12

MATINEE | EARTH



RS4013 11

PARADE | LAVENDER



RS4010 13

CROSS WEAVE | CACTUS



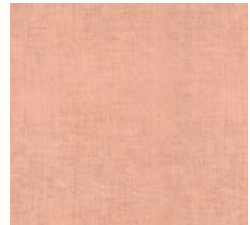
RS4015 14

MATINEE | DAHLIA



RS4013 12

CROSS WEAVE | DAHLIA



RS4015 16

CROSS WEAVE | GOLDENROD



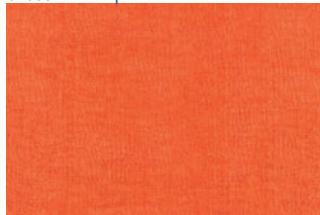
RS4015 20

CROSS WEAVE | TERRACOTTA



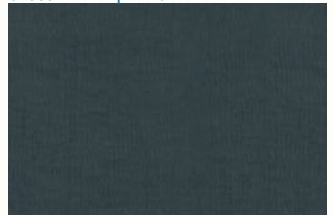
RS4015 25

CROSS WEAVE | WARM RED



RS4015 22

CROSS WEAVE | BLACK



RS4015 23

FLICKER | CARAMEL



RS4012 17

HOLIDAY | PINK



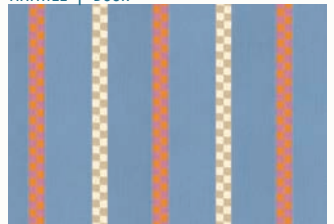
RS4065 11

FLICKER | DUSK



RS4012 18

MATINEE | DUSK



RS4013 14

SPECKLED
by
RASHIDA COLEMAN HALE

AVAILABLE NOW

Speckled is a paint splatter texture layered over a solid dyed Ruby Star Cotton base fabric, creating a rich, deep print with lots of dimension. This collection is even better than solids for supporting all of our Ruby Star Society collections. *All skus are RS5027 [color number]. 108" wide fabrics are noted separately and come on 200 thread count cotton.*

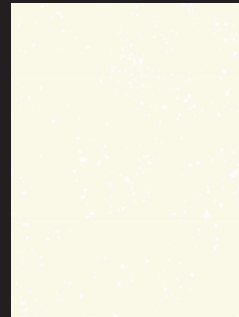
WHITE GOLD 14M



CONFETTI 15



SWEET CREAM 90



NEON PINK 16M



SUNSTONE 19M



PEACH 32



MELON 93M



CLEMENTINE 100M



BURNT ORANGE 98M



PARCHMENT 97M



SUNLIGHT 96M



CITRON 65M



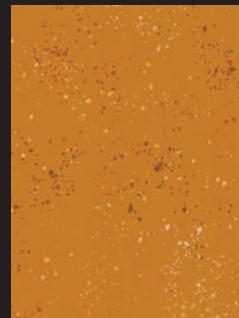
SUNSHINE 71M



CACTUS 63M



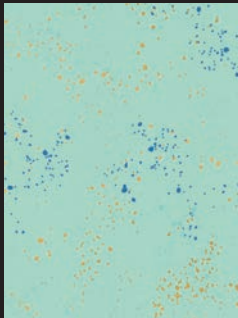
EARTH 26M



POLAR 101M



FROST 84M



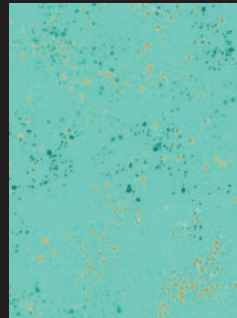
SOFT AQUA 70M



TURQUOISE 72M



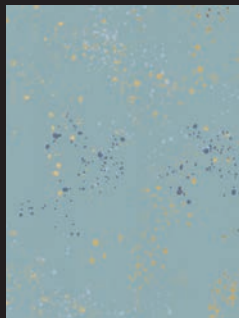
ICEBOX 81M



SUCCULENT 107M



SOFT BLUE 48M



DENIM 52M



BLUE SLATE 108M



BRIGHT BLUE 50M



TEAL 53M



BLUE RIBBON 104M



SHELL 82M



NATURAL 18M



KHAKI 66M



WOOL 76M



DOVE 59M



CLOUD 60M



PALE PINK 91M



COTTON CANDY 37M



PEONY 67M



DAISY 41M



WITCHY 79M



BERRY 62M



SORBET 92M



STRAWBERRY 43M



FESTIVE 75M



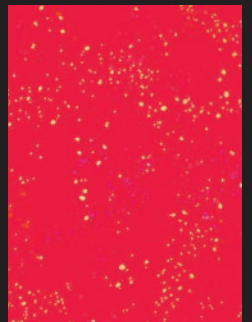
WARM RED 35M



POINSETTIA 94M



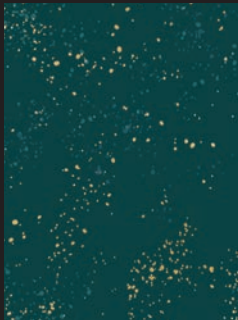
SCARLET 110M



EMERALD GREEN 74M



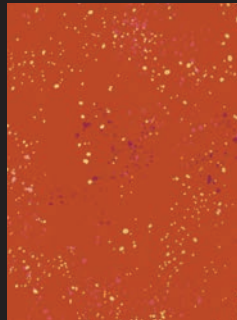
PINE 58M



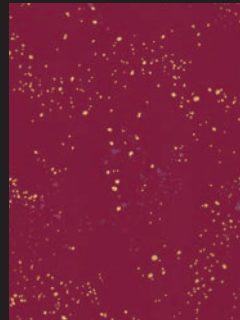
TEAL NAVY 55M



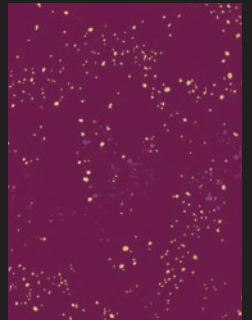
CAYENNE 64M



WINE TIME 36M



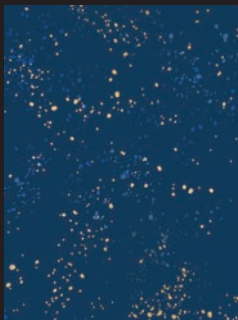
PURPLE VELVET 73M



BLUEBELL 109M



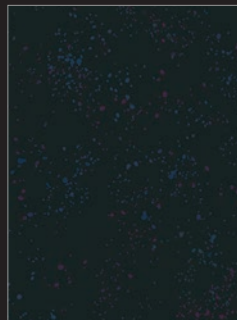
NAVY 105M



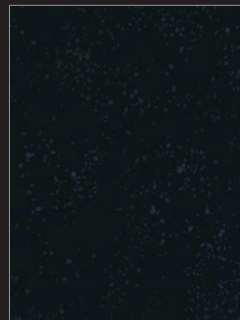
BLACK 61M



GALAXY 103



ONYX 102





★ RUBY STAR SOCIETY ★

in collaboration with



rubystarsociety.com

Follow @rubystarsociety on Instagram

for the most up to date announcements and inspiration!

Fabric on front cover from Sunbeam by Rashida Coleman-Hale, as well as the illustration.

Fabric on back cover from Reading Nook by Sarah Watts.