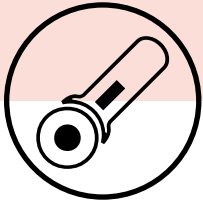


BLOCK HEADS

ROUND 2



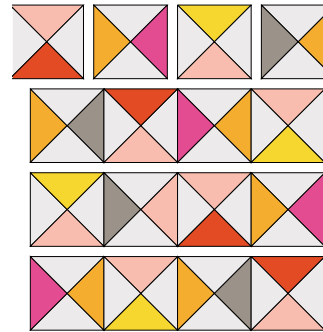
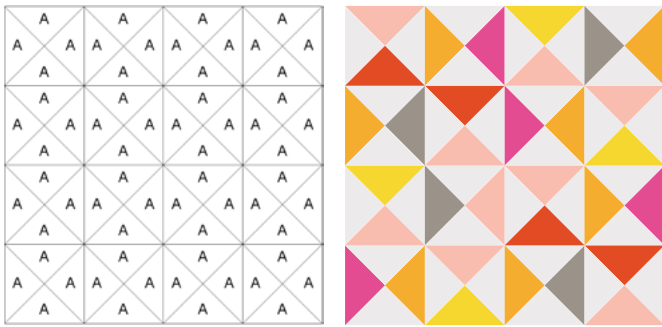
WHAT YOU'LL NEED

For fabric choices refer to the block diagram

A: 8 light and 8 dark squares 4 1/2" x 4 1/2"
(they are slightly oversized)

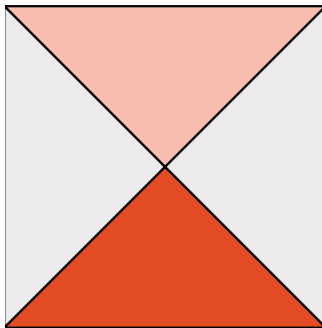
allowances nest. Stitch 1/4" away from both side of the marked line. Cut on the marked line, open and press. Trim hourglass units to a 3 1/2" square.

2. Arrange hourglass units into four rows as shown. Sew the units into rows and press. Join the rows and press to complete the block. Block measures 12 1/2" x 12 1/2".



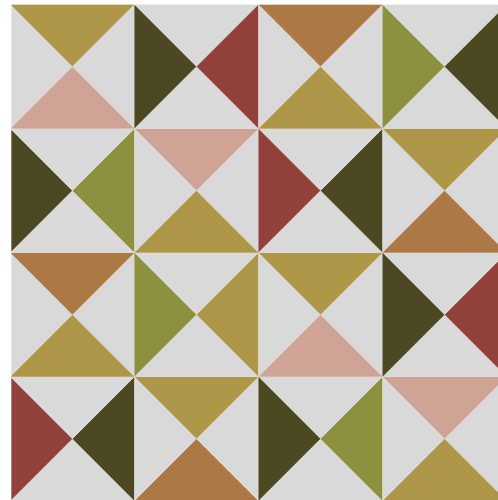
ASSEMBLY

1. Referring to BASIC INSTRUCTIONS half-square-triangles layer a light and a dark A square. Make a total of 16 half-square-triangle-units.



For a scrappy look, mix the 16 half-square-triangle-units and draw a diagonal line, perpendicular with the sewn seam on the wrong side of half of the sewn units. With right sides together, layer the two sewn squares while the seam

ALTERNATIVE COLOR WAY



Click to connect with us

2018 Block Heads
Participating Designers
For more info about the designer click on their name

Share your blocks on social media
[#modablockheads](#)
[#showmethemoda](#)

[Betsy Chutchian](#)
[Brigitte Heitland of Zen Chic](#)
[Carrie Nelson](#)
[Corey Yoder](#)
[Jan Patek](#)
[Jo Morton](#)
[Laurie Simpson](#)
[Lisa Bongeant of Primitive Gatherings](#)
[Lynne Hagmeier of Kansas Troubles](#)
[Barbara & Mary of Me & My Sister Designs](#)
[Sherri McConnell](#)
[Stacy Iest Hsu](#)
[Vanessa Goertzen of Lella Boutique](#)