

# *Hopewell*

by Jo Morton

*Laughter is an instant vacation.*

*moda*

Finished Size: 68"x77½"  
PS38110

moda

# Hopewell Jo Morton

*Laughter is an instant vacation.*

PS38110

Finished size: 68"x77½"

## Cutting

*For ease in piecing this quilt, sort, label, and keep pieces together by block number as they are cut. If the directions state that certain cut pieces are for 2 different block numbers. Place half of the cut pieces with each of the designated block numbers. When cut and sorted, each block assortment will have cut pieces to make 5 identical blocks. Make 12 sets of 5 to complete this quilt. Quilt requires 56 blocks. You will have 4 extras.*



Fabric 1-(38111-14) – FQ  
BLK 3

Cut 3 – 4"x21" strips. From the strips cut  
10 – 4" squares for Block 3.



Fabric 2-(38111-15) – ¾ yd.  
BLKs 1, 5, 7 and 11

Cut 3 – 4"x WOF strips. From the strips cut  
20 – 4" squares for Block 1 and 5.

Cut 3 – 2⅞"x WOF strips. From the strips cut  
40 – 2⅞"squares. Cut once diagonally for Blks 7 & 11.



Fabric 3-(38111-16) – ½ yd.  
BLKs 8, 12

Cut 2 – 4"x WOF strips. From the strips cut  
10 – 4" squares for Block 12.

Cut 2 – 2⅞"x WOF strips. From the strips cut  
20 – 2⅞"squares. Cut once diagonally for Block 8.



Fabric 4-(38111-18) – ⅝ yd.  
BLKs 1, 3 and 4

Cut 2 – 4"x WOF strips. From the strips cut  
10 – 4" squares for Block 4.

Cut 3 – 2⅞"x WOF strips. From the strips cut  
40 – 2⅞"squares. Cut once diagonally  
for Blocks 1 and 3.



Fabric 5-(38114-12) – ½ yd.  
BLKs 1, 5, 11

Cut 2 – 4"x WOF strips. From the strips cut  
10 – 4" squares for Block 11.

Cut 3 – 2½"x WOF strips. From the strips cut  
40 – 2½"squares. For Blocks 1 and 5.



Fabric 6-(38114-18) – ⅓ yd.  
BLK 8

Cut 2 – 4"x WOF strips. From the strips cut  
10 – 4" squares for Block 8.



Fabric 7-(38115-11) – ⅞ yd.  
BLKs 3, 9, 10 and 12

Cut 2 – 4"x WOF strips. From the strips cut  
10 – 4" squares for Block 9.

Cut 3 – 2⅞"x WOF strips. From the strips cut  
40 – 2⅞"squares. Cut once diagonally for Blks 10 & 12.

Cut 3 – 2½"x WOF strips. From the strips cut  
40 – 2½"squares. Cut for Block 3.

Cut 2 – 2"x WOF strips.

From the strips cut 36 – 2" squares for sashing corner sets.

moda



## Cutting (cont.)



Fabric 8-(38115-12) – ½ yd.  
BLK 7

**Cut 2** – 4"x WOF strips. From the strips cut  
10 – 4"squares for Block 7.

**Cut 3** – 2½"x WOF strips. From the strips cut  
20 – 2½"squares for Block 7.



Fabric 9-(38115-14) – ⅝ yd.  
BLKs 2, 11 and corner sets

**Cut 2** – 4"x WOF strips. From the strips cut  
10 – 4"squares for Block 2.

**Cut 2** – 2½"x WOF strips. From the strips cut  
20 – 2½"squares for Block 11.

**Cut 2** – 2"x WOF strips.  
From the strips cut 36 – 2"squares for sashing corner sets.



Fabric 10-(38116-11) – 2½ yd.  
Background – All blocks

**Cut 15** – 4"x WOF strips. From the strips cut  
120 – 4"squares for all blocks.



Fabric 11-(38116-15) – 1 yd.  
BLK 2, and binding

**Cut 2** – 2½"x WOF strips. From the strips cut  
20 – 2½"squares for Block 2.

**From the remainder Cut** – 2½" bias(diagonal) strips  
to equal 320" when joined for Binding.



Fabric 12-(38116-18) – 2¼ yds.  
BLKs 5, 6, 10 and sashings

**Cut 3** – 4"x WOF strips. From the strips cut  
20 – 4"squares for Blocks 6 and 10.

**Cut 2** – 2⅞"x WOF strips. From the strips cut  
20 – 2⅞"squares. Cut once diagonally for Block 5.

**Cut 26** – 2"x WOF strips. From the strips cut  
127 – 2"x 8½ sashing strips.



Fabric 13-(38116-25) – ⅓ yd.  
BLKs 4, 6, 10

**Cut 4** – 2½"x WOF strips. From the strips cut  
60 – 2½"squares for Blocks 4, 6,10



Fabric 14-(38117-22) – ⅓ yd.  
BLKs 2 and 8

**Cut 2** – 2⅞"x WOF strips. From the strips cut  
20 – 2⅞"squares. Cut once diagonally for  
Block 2.

**Cut 2** – 2½"x WOF strips. From the strips cut  
20 – 2½"squares for Block 8.



Fabric 15-(38117-25) – ½ yd.  
BLKs 4, 9 and 12

**Cut 3** – 2⅞"x WOF strips. From the strips cut  
40 – 2⅞"squares. Cut once diagonally for  
Blocks 4 and 9.

**Cut 2** – 2½"x WOF strips. From the strips cut  
20 – 2½"squares for Block 12.

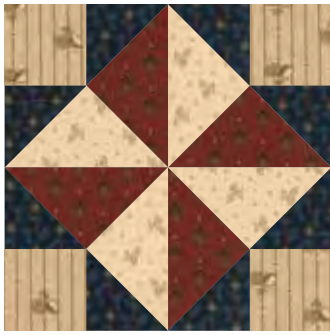


Fabric 16-(38117-29) – ⅓ yd.  
BLKs 6 and 9

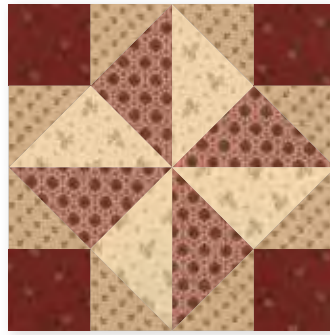
**Cut 2** – 2⅞"x WOF strips. From the strips cut  
20 – 2⅞"squares. Cut once diagonally for  
Block 6.

**Cut 2** – 2½"x WOF strips. From the strips cut  
20 – 2½"squares for Block 9.

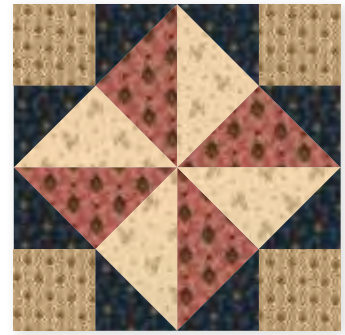
*moda*



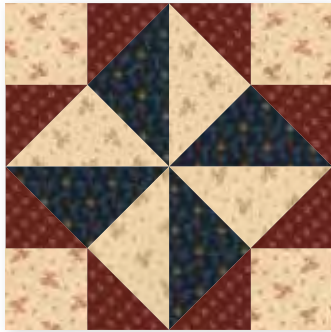
Block 1



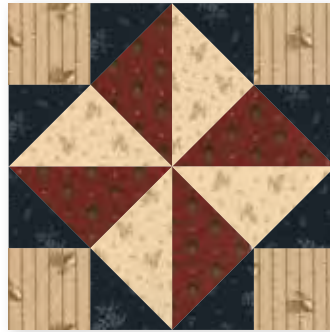
Block 2



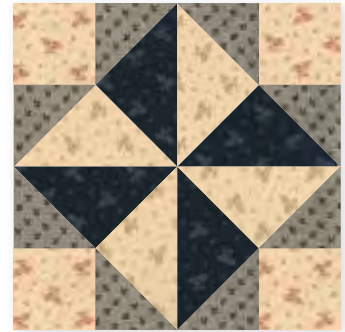
Block 3



Block 4

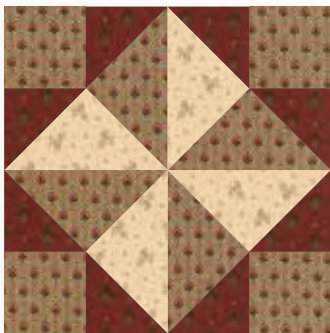


Block 5

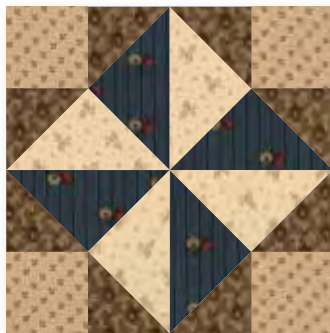


Block 6

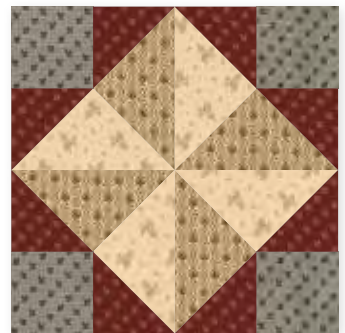
*moda Hopewell* by Jo Morton Make 5 of each block.



Block 7



Block 8



Block 9



Block 10



Block 11



Block 12

# Construction

Refer to the chart below for the fabrics needed for each block.

## Building a block

The following directions apply to all blocks in this quilt.

Each block requires 4 half square triangle units, 4-2½" corner squares and 8 setting triangle units.

1. Using a mechanical pencil draw a diagonal line on the wrong side of the 10-4" background squares (F10 for every blk.).

Select the second 10-4" print squares for each block. *Example: For Block 1 the second 4" square is F2.*

With right sides together align edges and stitch ¼" on opposite sides of the marked line on F10.

Cut on marked line. Press seams open. Make 20 HST units. Each unit should measure 3½" x 3½" with seams.



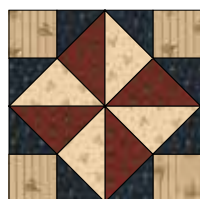
Right sides together  
Stitch ¼" on opposite sides of  
the marked line.  
Cut on marked line.

Press seams open.

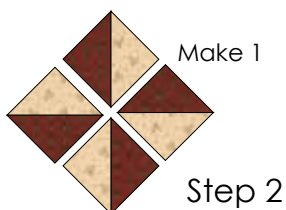


HSTs should measure 3½" x 3½" with seams.  
Yields 2 HST units.

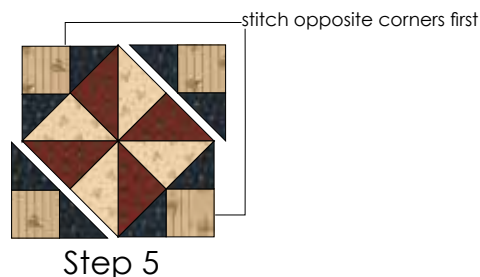
2. Stitch the four half square triangle units together to make a pinwheel block. Press seams open. Square and trim block to measure 6¼" x 6¼" with seams.
3. Cut the 20 -2⅞" squares once diagonally for Setting Triangles.
4. Add the setting triangles to two adjoining sides of each of the four corner squares (*note direction of corner square fabric*) to make 4 pieced triangle units. Press seams open *See illustration.*
5. Stitch the triangle units to opposite sides of the pinwheel block. Press seams open. Finished block should measure 8½" x 8½" with seams.
6. Repeat Steps 1 thru 5 to make a total of 5 identical blocks.



Block 1



Step 2



Step 5

## Fabrics for *Hopewell* Blocks

Block #	HSTs (4")	Corners (2½")	Setting Tri (2⅞")
Block 1	10-F2 & 10-F10	20-F5	40-F4
Block 2	10-F9 & 10-F10	20-F11	40-F14
Block 3	10-F1 & 10-F10	20-F7	40-F4
Block 4	10-F4 & 10-F10	20-F13	40-F15
Block 5	10-F2 & 10-F10	20-F5	40-F12
Block 6	10-F12 & 10-F10	20-F13	40-F16
Block 7	10-F8 & 10-F10	20-F8	40-F2
Block 8	10-F6 & 10-F10	20-F14	40-F3
Block 9	10-F7 & 10-F10	20-F16	40-F15
Block 10	10-F12 & 10-F10	20-F13	40-F7
Block 11	10-F5 & 10-F10	20-F9	40-F2
Block 12	10-F3 & 10-F10	20-F15	40-F7

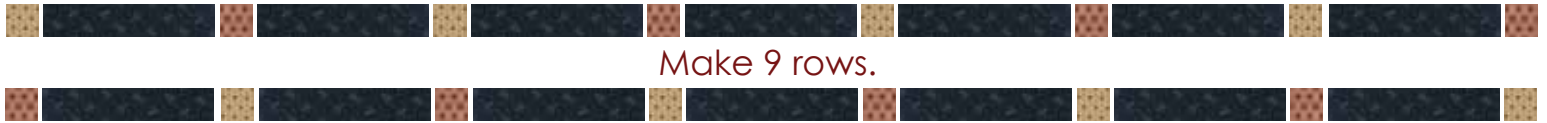
Make a total of 60 blocks.  
Fifty six are needed for this quilt.  
You will have four extras to add  
to a pieced back or to use as a  
label.

*moda*

## Construction (cont.)

**Sashing Rows** Needed: 36 F7 and 36 F9 – 2"x2" squares for corner sets and 63 F12 – 2"x8½" sashing strips

1. Each sashing row requires 4-F7 and 4-F9 squares and 7-F12 sashing strips. Make 9 rows. Press seams open.
2. Alternate 4-F7 and 4-F9 squares as you stitch each sashing row. Make 9 rows. Press seams open.



## Arranging the Blocks

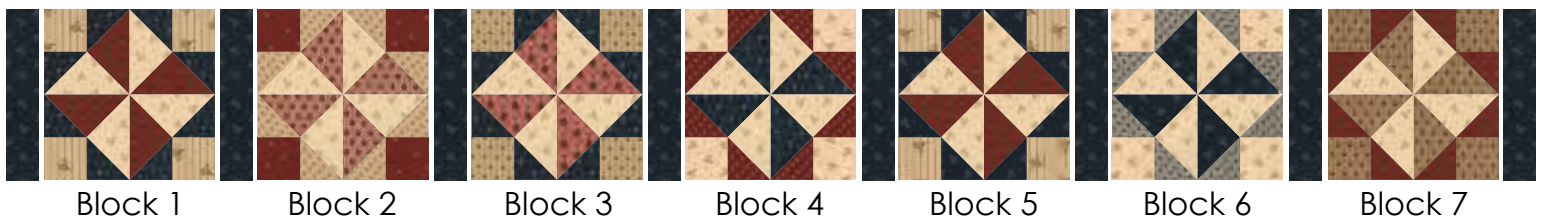
*Feel free to arrange the finished blocks as you wish. We arranged our blocks in numeral order – Blocks 1-12 and then repeated the order 5 times, but using only 8 blocks in the last repeat. With the odd number of blocks in a row the different color combinations of the various blocks played well throughout the quilt top.*

- Row 1 – Blocks 1-7
- Row 2 – Blocks 8-12 and blocks 1-2
- Row 3 – Blocks 3-9
- Row 4 – Blocks 10-12 and blocks 1-4
- Row 5 – Blocks 5-11
- Row 6 – Block 12 and blocks 1-6
- Row 7 – Blocks 7-12 and block 1
- Row 8 – Blocks 2-8
- Plus 4 extras

*moda*

**Block Sashings** Needed: 64 F12 – 2"x8½" sashing strips

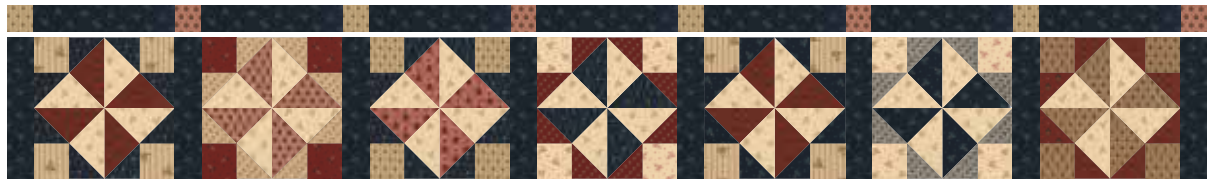
1. Each row requires 8 F12 sashing strips and 7 assorted blocks. Make 8 rows. Press seams open.



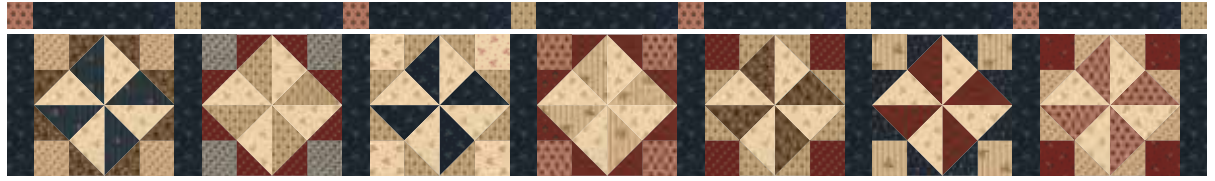


## Assemble Quilt

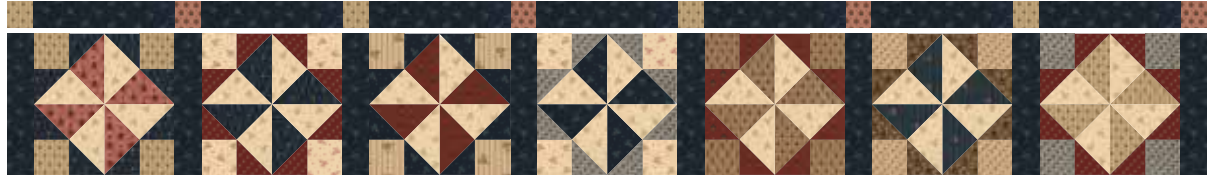
**Row 1**  
Blks 1–7



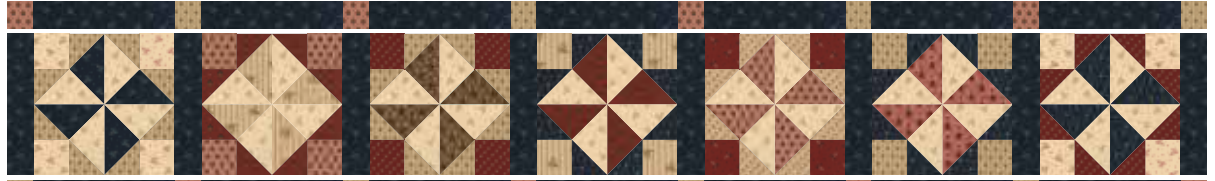
**Row 2**  
Blks 8–12  
Blks 1–2



**Row 3**  
Blks 3–9



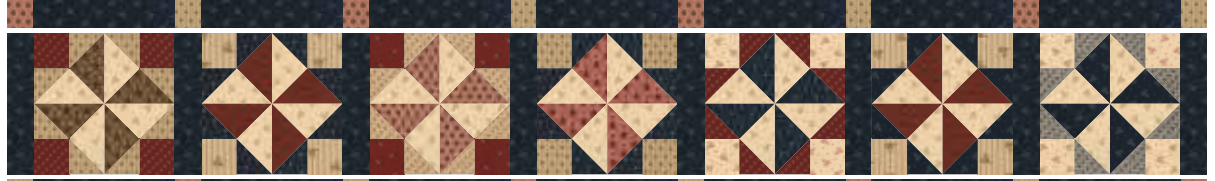
**Row 4**  
Blks 10–12  
Blks 1–4



**Row 5**  
Blks 5–11



**Row 6**  
Blk 12  
Blks 1–6



**Row 7**  
Blks 7–12  
Blks 1



**Row 8**  
Blks 2–8



**Plus 4 extras**

## Finishing

1. Using a diagonal seam, join binding strips end to end. Press seams open. Fold prepared strip in half wrong sides together and press to make the binding.
2. Layer, Quilt, and Bind

moda

# Hopewell Jo Morton

*Laughter is an instant vacation.*

PS38110

Finished size: 68"x77½"

**Fabric 1** FQ

38111-14



**Fabric 2** ¾ yd.

38111-15



**Fabric 3** ½ yd.

38111-16



**Fabric 4** ⅝ yd.

38111-18



**Fabric 5** ½ yd.

38114-12



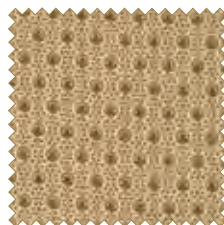
**Fabric 6** ⅓ yd.

38114-18



**Fabric 7** ⅞ yd.

38115-11



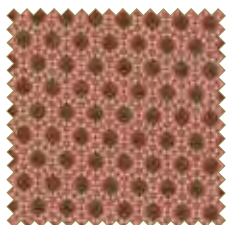
**Fabric 8** ½ yd.

38115-12



**Fabric 9** ⅝ yd.

38115-14



**Fabric 10** 2½ yds.

38116-11



**Fabric 11** 1 yd.

38116-15



**Fabric 12** 2¼ yds.

38116-18



**Fabric 13** ⅓ yd.

38116-25



**Fabric 14** ⅓ yd.

38117-22



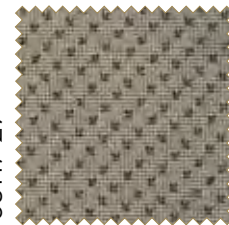
**Fabric 15** ½ yd.

38117-25



**Fabric 16** ⅓ yd.

38117-29



**Backing** 4½ yards – if pieced across



MODAFABRICS.COM  
PS38110 — SUGGESTED RETAIL \$10.00