

Primrose Garden Bella Solids

MY FAVORITE COLOR IS *moda*

ALTERNATE BLOCK-BY-BLOCK CUTTING DIAGRAMS

The following pages contain alternate block-by-block / BOM cutting instructions for the My Favorite Color is Moda Sampler.

What does that mean? If you are participating in a Block of the Month program, you'll likely receive only the fabric you need for that month's worth of sewing at a time—which means these are the charts for you rather than those in the pattern.

Or, if you're looking to change up the pattern and want to replace certain fabrics, this will come in handy as well. Want to change up Fabric 3 in Block 1? Done, just swap in a fat quarter.

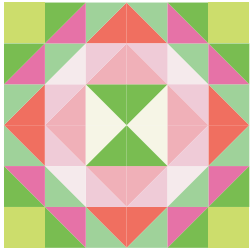
You'll notice a few places where you **MUST** save the leftovers from one block to use in another, noted with **SAVE THIS SCRAP**. We strongly recommend that you save all of your scraps as you sew-along, that way you have some backups if you need to recut anything.

| | BLOCK 1 FEB | BLOCKS 2-3 MAR | BLOCKS 4-5 APR | BLOCK 6 MAY | BLOCKS 7-9 JUNE | BLOCKS 10-11 JULY | BLOCKS 12-14 AUG | BLOCK 15 SEPT | BLOCKS 16-17 OCT | BLOCKS 18-19 NOV | BLOCK 20 DEC |
|-----------|----------------|------------------------|-------------------|---------------------------|--------------------|----------------------|------------------------|------------------|-------------------------|---------------------|-------------------------|
| FABRIC 1 | ½ YD | FQ | - | Cut from Block 1 scrap | F8 | - | - | - | FQ | F8 | FQ |
| FABRIC 2 | ½ YD | Cut from Block 1 scrap | FQ | FQ | FQ | FQ | - | FQ | Cut from Block 3 scrap | FQ | ½ YD |
| FABRIC 3 | FQ | FQ | ⅓ YD | F8 | FQ | ⅓ YD | F8 | - | F8 | - | - |
| FABRIC 4 | - | F8 | - | FQ | - | FQ | - | F8 | F8 | F8 | Cut from Block 19 scrap |
| FABRIC 5 | ⅓ YD | FQ | FQ | Cut from Blocks 2-3 scrap | F8 | FQ | Cut from Block 1 scrap | F8 | F8 | - | F8 |
| FABRIC 6 | ¼ YD | F8 | - | FQ | F8 | - | ⅓ YD | FQ | Cut from Block 13 scrap | - | FQ |
| FABRIC 7 | FQ | F8 | FQ | F8 | F8 | FQ | FQ | ½ YD | Cut from Block 10 scrap | - | F8 |
| FABRIC 8 | F8 | F8 | - | FQ | - | - | F8 | F8 | FQ | FQ | F8 |
| FABRIC 9 | FQ | F8 | F8 | F8 | FQ | - | FQ | - | F8 | FQ | - |
| FABRIC 10 | FQ | F8 | F8 | - | - | - | FQ | - | F8 | - | - |

MY FAVORITE COLOR IS *moda*

ALTERNATE BLOCK-BY-BLOCK CUTTING DIAGRAMS

Primrose Garden Bella Solids



BLOCK 1

FABRIC 1 - 1/2 YD

-Cut (1) 7" x WOF strip.
Subcut (5) 7" squares.

-From remaining fabric, cut a 7" section and trim to 7" square.

-Save your remaining yardage for Block 6.

FABRIC 2 - 1/2 YD

-Cut (1) 7" x WOF strip.
Subcut (5) 7" squares.

-From remaining fabric, cut a 7" section and trim to 7" square.

-Save your remaining yardage for Blocks 2-3 & 16-17.

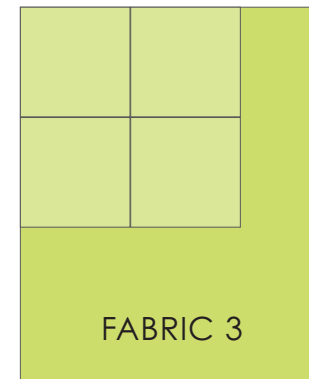
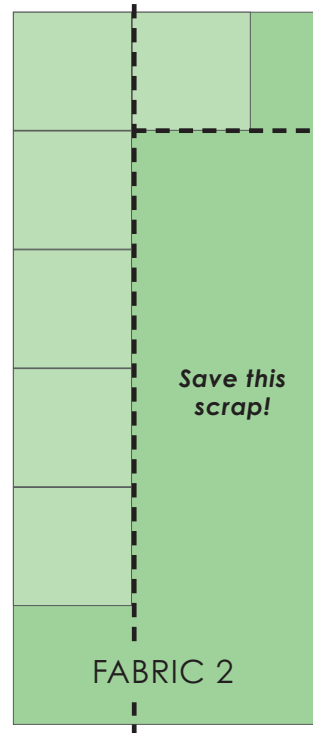
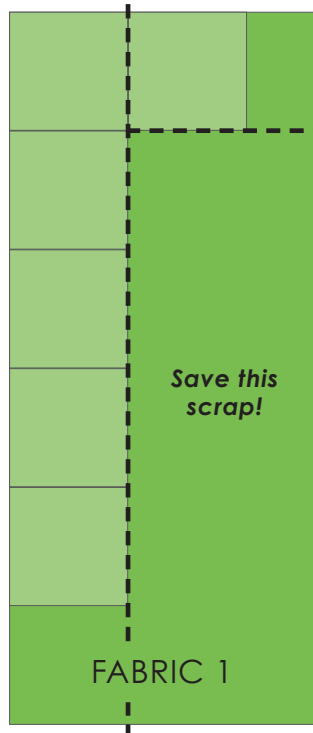
FABRIC 3 - 1 FQ

-Cut (4) 6 1/2" squares.

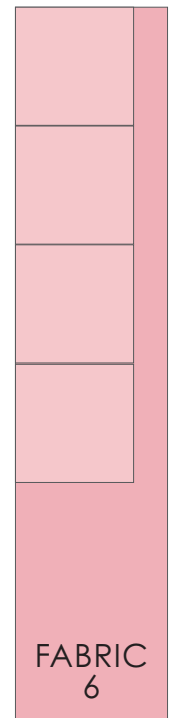
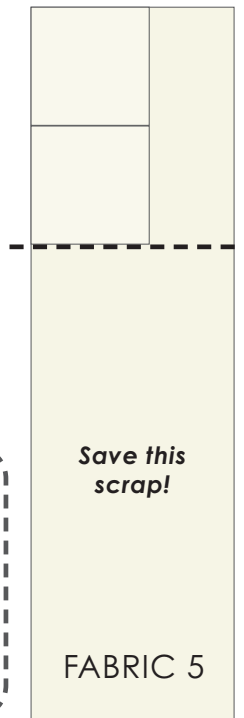
FABRIC 5 - 1/3 YD

-Cut a 14" section off the end of your fabric. Subcut into (2) 7" squares.

-Save your remaining yardage for Block 13.



Save this scrap!
If you see this note on a fabric diagram, make sure to save your extra yardage for future blocks.



FABRIC 6 - 1/4 YD

-Cut (4) 7" squares.

FABRIC 7 - 1 FQ

-Cut (4) 7" squares.

FABRIC 8 - 1 F8

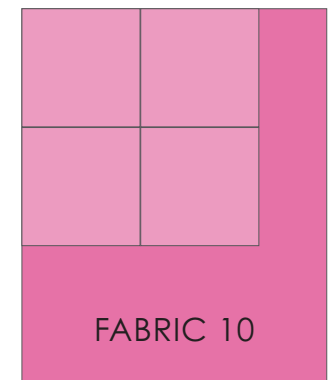
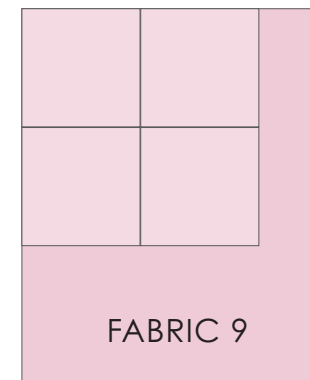
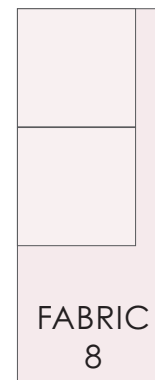
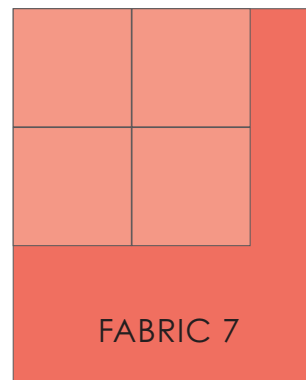
-Cut (2) 7" squares.

FABRIC 9 - 1 FQ

-Cut (4) 7" squares.

FABRIC 10 - 1 FQ

-Cut (4) 7" squares.



*We've noted a few cuts of fabric where you MUST save your scraps for later blocks. But we recommend saving all of your leftovers just in case!

MY FAVORITE COLOR IS *moda*

ALTERNATE BLOCK-BY-BLOCK CUTTING DIAGRAMS

Primrose Garden Bella Solids

BLOCKS 2 & 3

FABRIC 1 - 1 FQ

-Cut (2) 2" x 22" strips. Subcut (20) 2" squares for Block 2.

-Cut (4) 2" x 15½" rectangles for Block 3.

FABRIC 2 - BLOCK 1 SCRAP

-From remaining fabric from Block 1, cut a 12½" section. Subcut into (4) 2" x 12½" rectangles for Block 3.

-Save your remaining yardage for Blocks 16-17.

FABRIC 3 - 1 FQ

-Cut (2) 2" x 15½" rectangles for Block 2.

-Cut (6) 2" x 9½" rectangles. (2) for Block 2, (4) for Block 3.

FABRIC 4 - 1 F8

-Cut (2) 2" x 12½" rectangles and (2) 2" x 6½" rectangles for Block 2.

FABRIC 5 - 1 FQ

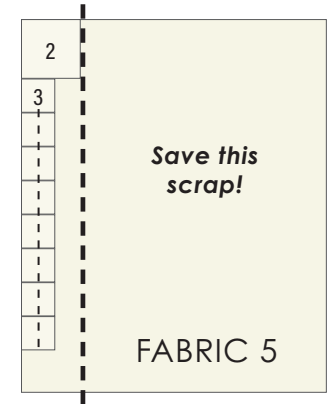
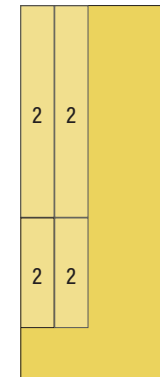
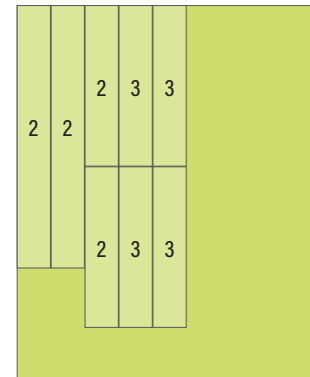
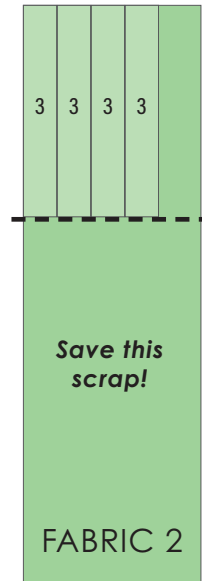
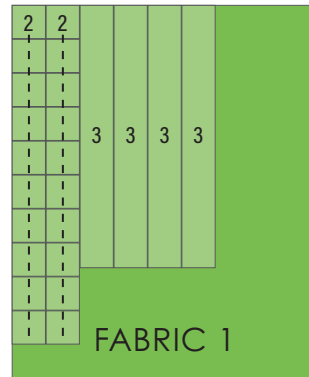
-Cut (1) 3½" x 22" strip. Subcut (1) 3½" square for Block 2, and (8) 2" squares for Block 3.

-Save your remaining yardage for Block 6.

FABRIC 6 - 1 F8

-Cut (2) 2" x 3½" rectangles for Block 2.

-Cut (8) 2" squares for Block 3.



FABRIC 7 - 1 F8

-Cut (2) 2" x 3½" rectangles for Block 2.

-Cut (4) 2" squares for Block 3.

FABRIC 8 - 1 F8

-Cut (4) 2" x 6½" rectangles for Block 3.

FABRIC 9 - 1 F8

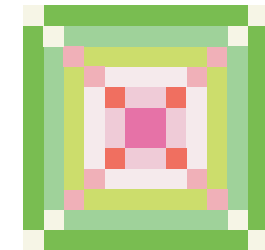
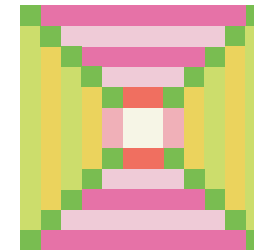
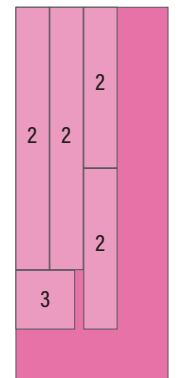
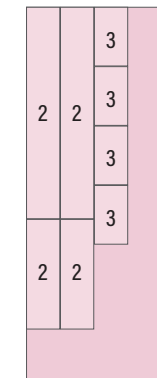
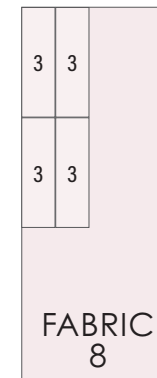
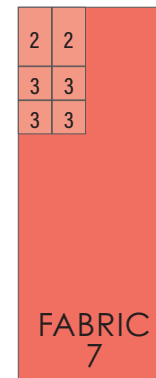
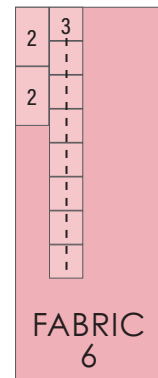
-Cut (3) 2" x 22" strips. Subcut (2) 2" x 12½" rectangles and (2) 2" x 6½" rectangles for Block 2. Subcut (4) 2" x 3½" rectangles for Block 3.

FABRIC 10 - 1 F8

-Cut (1) 4" x 22" strip. First, cut a 3½" section off the end and trim to (1) 3½" square for Block 3.

-From remaining 4" strip, subcut (2) 2" x 15½" rectangles for Block 2.

-Cut (2) 2" x 9½" rectangles for Block 2 from remaining fabric.



*We've noted a few cuts of fabric where you MUST save your scraps for later blocks. But we recommend saving all of your leftovers just in case!

MY FAVORITE COLOR IS *moda*

ALTERNATE BLOCK-BY-BLOCK CUTTING DIAGRAMS

Primrose Garden Bella Solids

BLOCKS 4 & 5

FABRIC 2 - 1 FQ

-Cut (6) 5½" squares. (2) for Block 4, (4) for Block 5.

FABRIC 3 - ⅓ YD

-Cut (10) 5½" squares. (2) for Block 4, (8) for Block 5.

FABRIC 5 - 1 FQ

-Cut (8) 5½" squares for Block 4.

FABRIC 7 - 1 FQ

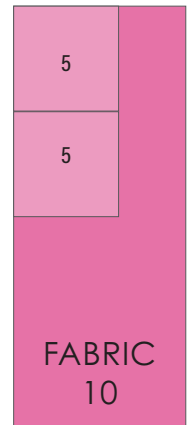
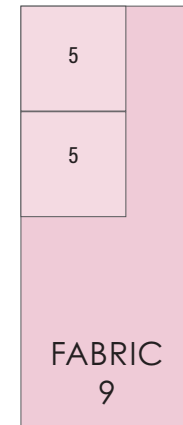
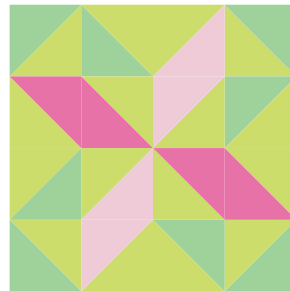
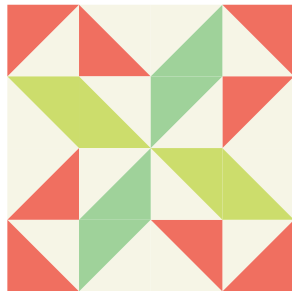
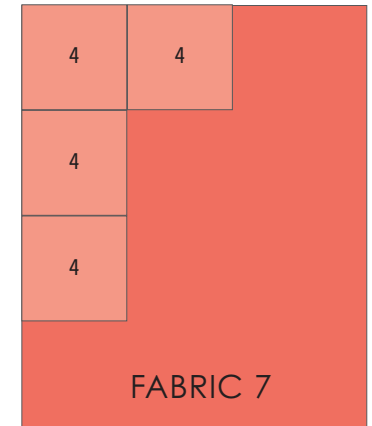
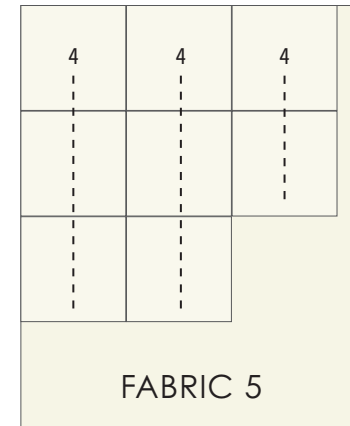
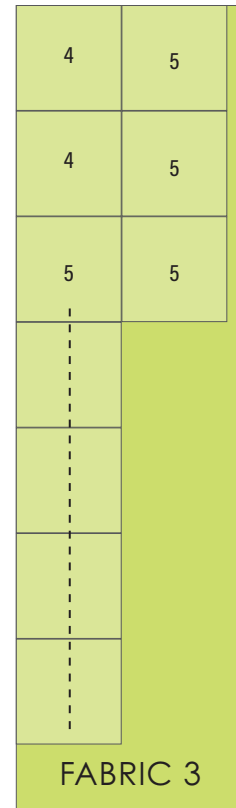
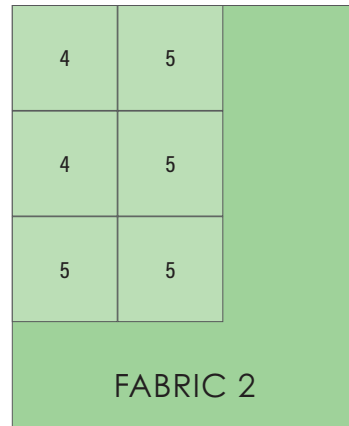
-Cut (4) 5½" squares for Block 4.

FABRIC 9 - 1 F8

-Cut (2) 5½" squares for Block 5.

FABRIC 10 - 1 F8

-Cut (2) 5½" squares for Block 5.



*We've noted a few cuts of fabric where you MUST save your scraps for later blocks. But we recommend saving all of your leftovers just in case!

MY FAVORITE COLOR IS *moda*

ALTERNATE BLOCK-BY-BLOCK CUTTING DIAGRAMS

Primrose Garden Bella Solids

BLOCK 6

FABRIC 1 - BLOCK 1 SCRAP

- Cut (2) 5½" squares.
- Cut (8) 3¼" squares.

FABRIC 2 - 1 FQ

- Cut (3) 5½" squares.
- Cut (13) 3¼" squares.

FABRIC 3 - 1 F8

- Cut (1) 5½" square.
- Cut (5) 3¼" squares.

FABRIC 4 - 1 FQ

- Cut (2) 5½" squares.
- Cut (10) 3¼" squares.

FABRIC 5 - BLOCKS 2-3 SCRAP

- Cut (2) 5½" squares.
- Cut (8) 3¼" squares.

FABRIC 6 - 1 FQ

- Cut (3) 5½" squares.
- Cut (15) 3¼" squares.

FABRIC 7 - 1 F8

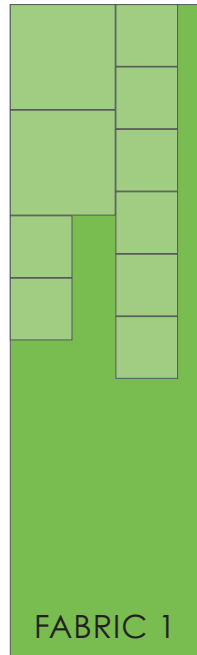
- Cut (1) 5½" square.
- Cut (5) 3¼" squares.

FABRIC 8 - 1 FQ

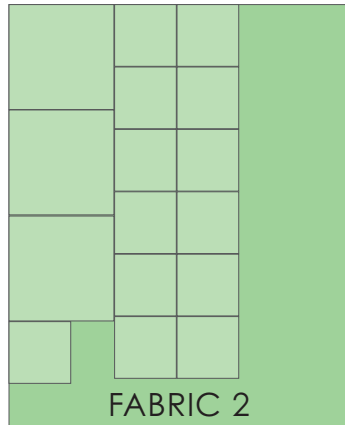
- Cut (3) 5½" squares.
- Cut (13) 3¼" squares.

FABRIC 9 - 1 F8

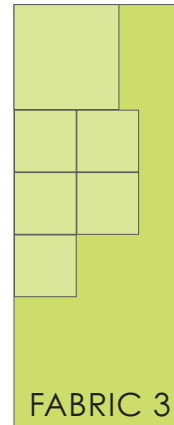
- Cut (1) 5½" square.
- Cut (5) 3¼" squares.



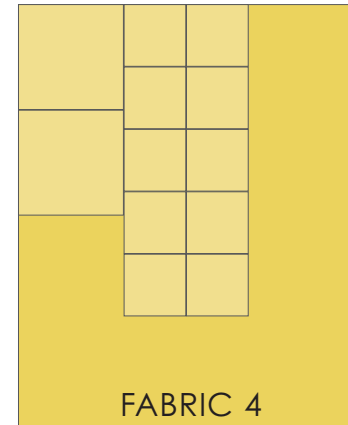
FABRIC 1



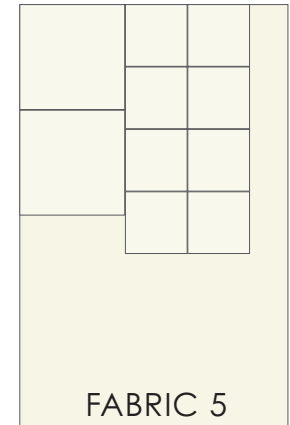
FABRIC 2



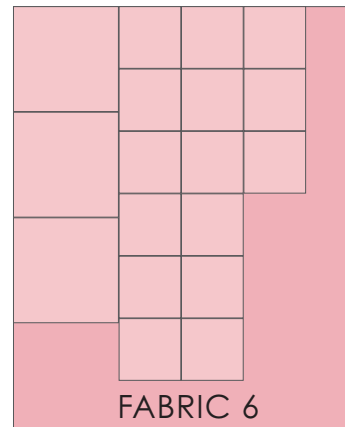
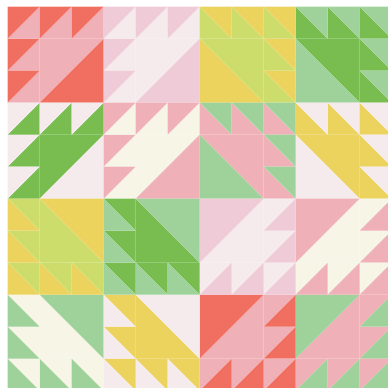
FABRIC 3



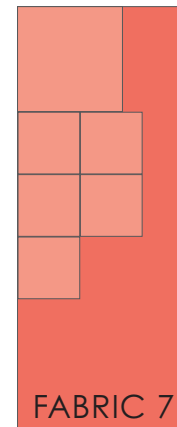
FABRIC 4



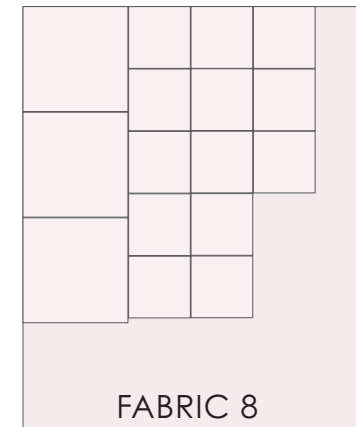
FABRIC 5



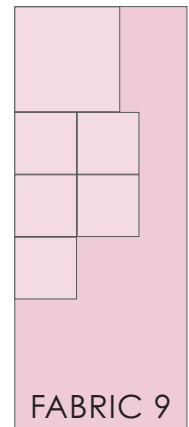
FABRIC 6



FABRIC 7



FABRIC 8



FABRIC 9

*We've noted a few cuts of fabric where you MUST save your scraps for later blocks. But we recommend saving all of your leftovers just in case!

MY FAVORITE COLOR IS *moda*

ALTERNATE BLOCK-BY-BLOCK CUTTING DIAGRAMS

Primrose Garden Bella Solids

BLOCKS 7, 8 & 9

FABRIC 1 - 1 F8

- Cut (1) 6½" square for Block 7.
- Cut (4) 3½" x 6½" rectangles for Block 7.

FABRIC 2 - 1 FQ

- Cut (2) 7" squares for Block 7.
- Cut (1) 5" square for Block 8.
- Cut (4) 3½" x 6½" rectangles for Block 7.

- Cut (4) 2¾" x 5" rectangles for Block 8.

FABRIC 3 - 1 FQ

- Cut (6) 4" squares for Block 9.
- Cut (12) 2" x 3½" rectangles for Block 9.

FABRIC 5 - 1 F8

- Cut (2) 5½" squares for Block 8.
- Cut (4) 2¾" x 5" rectangles for Block 8.

FABRIC 6 - 1 F8

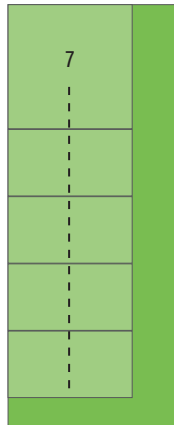
- Cut (2) 5½" squares for Block 8.

FABRIC 7 - 1 F8

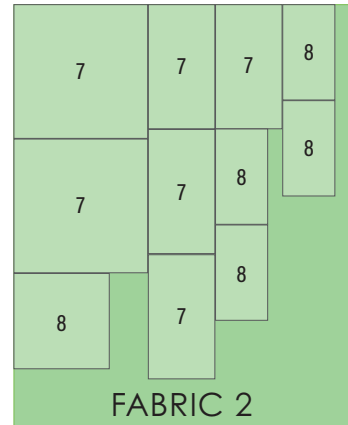
- Cut (6) 4" squares for Block 9.

FABRIC 9 - 1 FQ

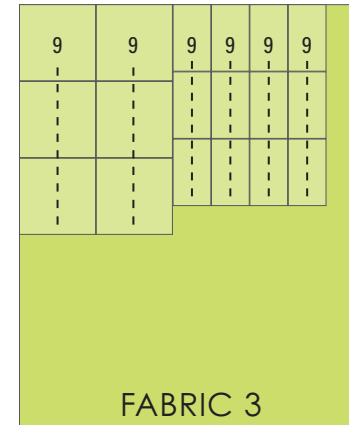
- Cut (2) 7" squares for Block 7.
- Cut (3) 3½" squares for Block 9.
- Cut (12) 2" x 3½" rectangles for Block 9.



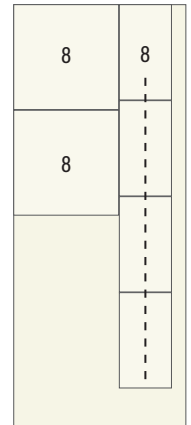
FABRIC 1



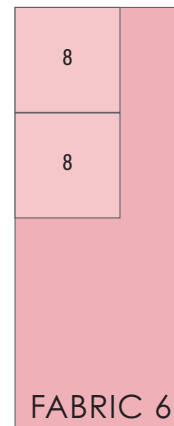
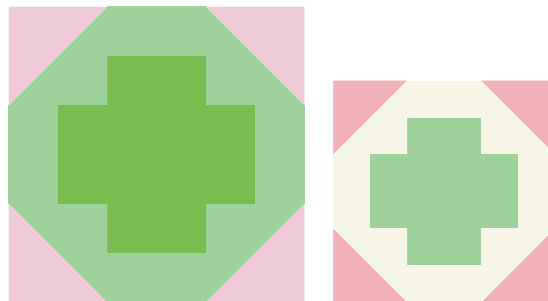
FABRIC 2



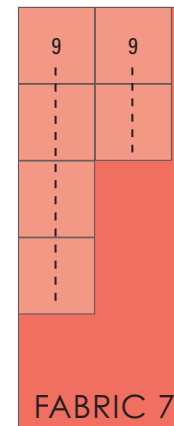
FABRIC 3



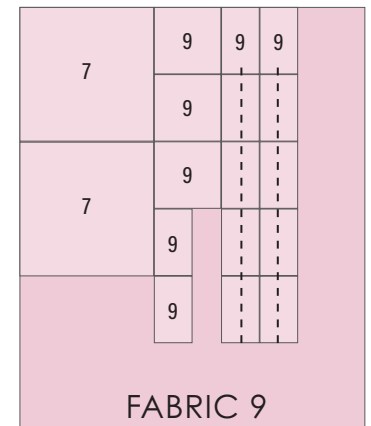
FABRIC 5



FABRIC 6



FABRIC 7



FABRIC 9

*We've noted a few cuts of fabric where you MUST save your scraps for later blocks. But we recommend saving all of your leftovers just in case!

MY FAVORITE COLOR IS *moda*

ALTERNATE BLOCK-BY-BLOCK CUTTING DIAGRAMS

Primrose Garden Bella Solids

BLOCKS 10 & 11

FABRIC 2 - 1 FQ

-Cut (8) 4 $\frac{3}{8}$ " squares for Block 11.

FABRIC 3 - $\frac{1}{3}$ YD

-Cut (4) 5 $\frac{1}{2}$ " squares for Block 10.

-Cut (4) 3 $\frac{7}{8}$ " squares for Block 11.

-Cut (8) 4 $\frac{3}{8}$ " squares for Block 11.

FABRIC 4 - 1 FQ

-Cut (2) 7 $\frac{1}{4}$ " squares for Block 11.

-Cut (4) 3 $\frac{7}{8}$ " squares for Block 11.

FABRIC 5 - 1 FQ

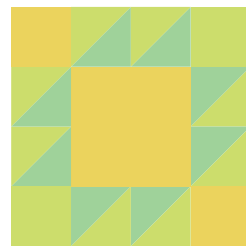
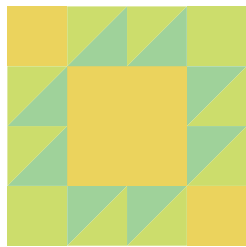
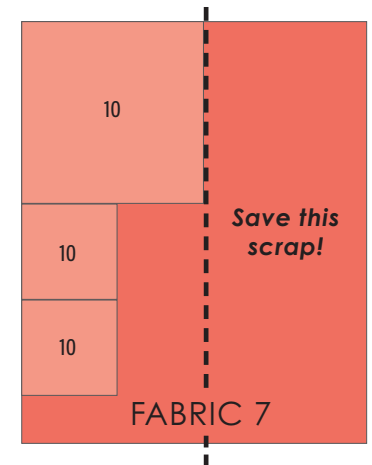
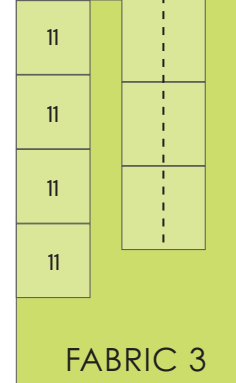
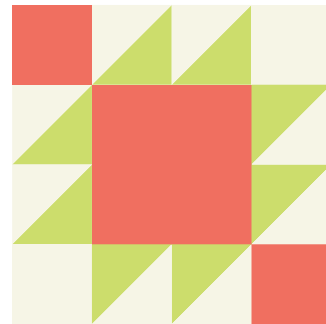
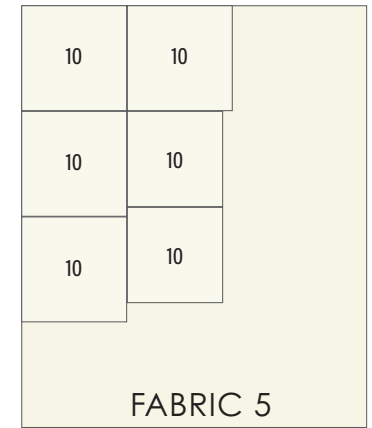
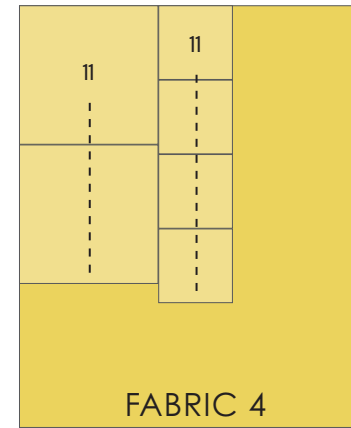
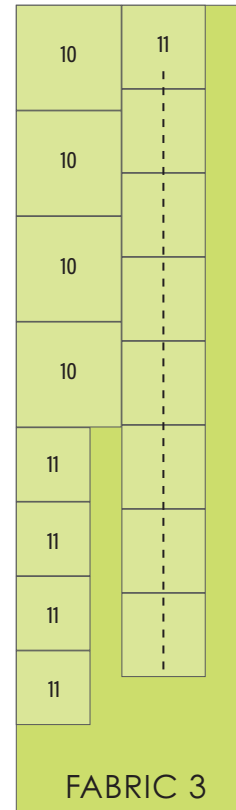
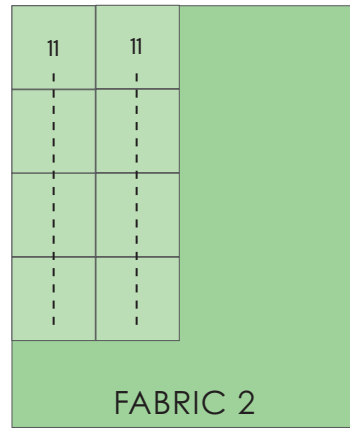
-Cut (4) 5 $\frac{1}{2}$ " squares for Block 10.

-Cut (2) 5" squares for Block 10.

FABRIC 7 - 1 FQ

-Cut a 9 $\frac{1}{2}$ " x 22" strip. Subcut (1) 9 $\frac{1}{2}$ " square and (2) 5" squares for Block 10.

-Save your remaining yardage for Block 16.



*We've noted a few cuts of fabric where you MUST save your scraps for later blocks. But we recommend saving all of your leftovers just in case!

MY FAVORITE COLOR IS *moda*

ALTERNATE BLOCK-BY-BLOCK CUTTING DIAGRAMS

Primrose Garden Bella Solids

BLOCKS 12, 13 & 14

FABRIC 3 - 1 F8

-Cut (12) 3½" squares for Block 14.

FABRIC 5 - BLOCK 1 SCRAP

-Cut (2) 10½" squares for Block 13.

FABRIC 6 - ⅓ YD

-Cut a 21" x 12" section. Subcut into (2) 10½" squares for Block 13.

-Save your remaining yardage for Blocks 16-17.

FABRIC 7 - 1 FQ

-Cut (12) 3½" squares for Block 14.

FABRIC 8 - 1 F8

-Cut (3) 5½" squares for Block 12.

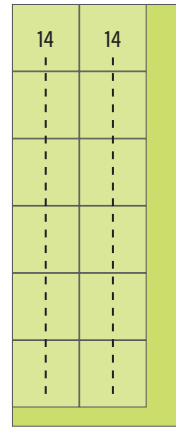
FABRIC 9 - 1 FQ

-Cut (3) 5½" squares for Block 12.

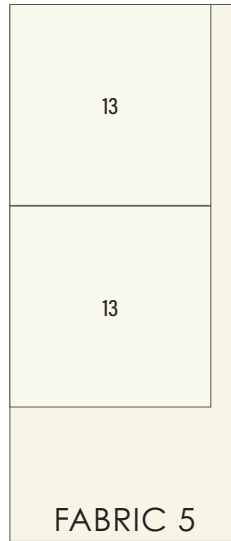
-Cut (3) 3½" squares for Block 14.

FABRIC 10 - 1 FQ

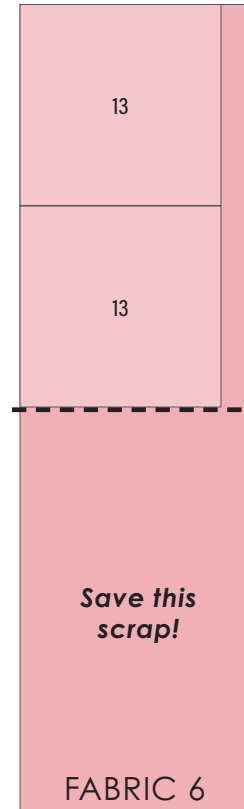
-Cut (6) 5½" squares for Block 12.



FABRIC 3

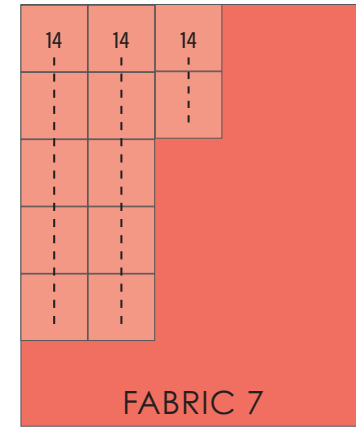


FABRIC 5

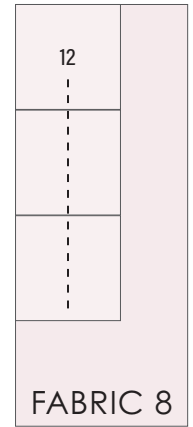


Save this scrap!

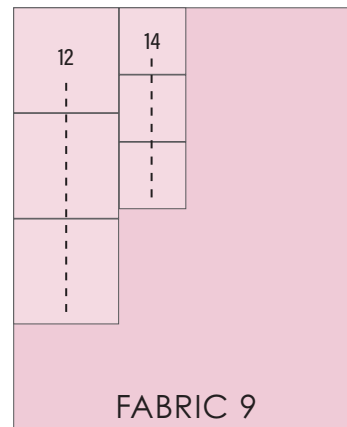
FABRIC 6



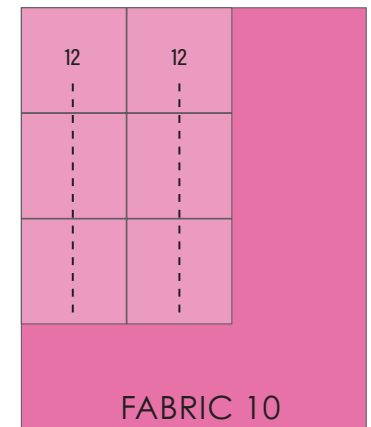
FABRIC 7



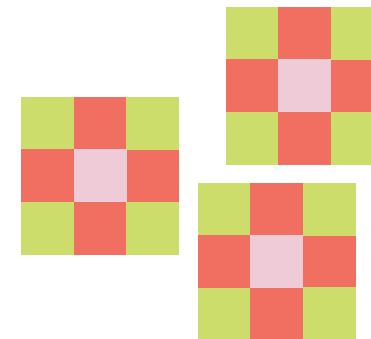
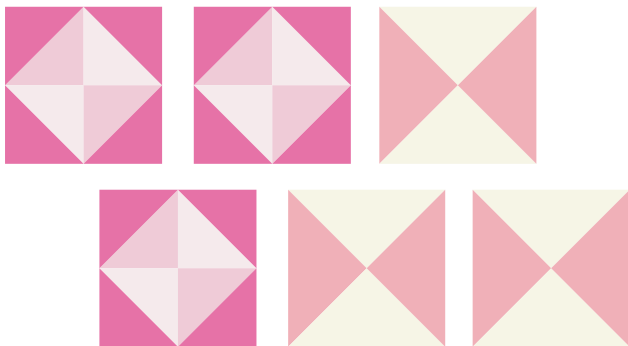
FABRIC 8



FABRIC 9



FABRIC 10



*We've noted a few cuts of fabric where you MUST save your scraps for later blocks. But we recommend saving all of your leftovers just in case!

MY FAVORITE COLOR IS *moda*

ALTERNATE BLOCK-BY-BLOCK CUTTING DIAGRAMS

Primrose Garden Bella Solids

BLOCK 15

FABRIC 2 - 1 FQ

-Cut (18) 3/4" squares.

FABRIC 4 - 1 F8

-Cut (6) 3/4" squares.

FABRIC 5 - 1 F8

-Cut (6) 3/4" squares.

FABRIC 6 - 1 FQ

-Cut (6) 3/4" squares.

-Cut (4) 2 3/4" x 5" rectangles.

-Cut (4) 2 3/4" squares.

FABRIC 7 - 1/2 YD

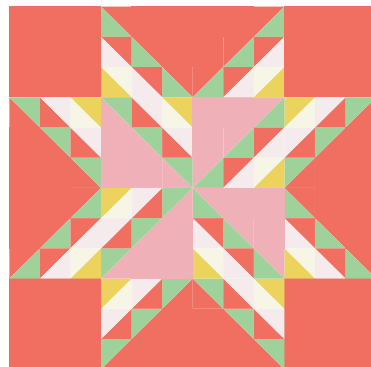
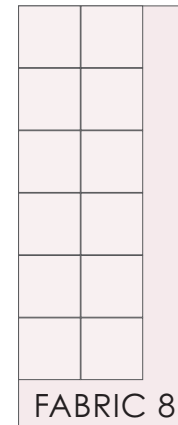
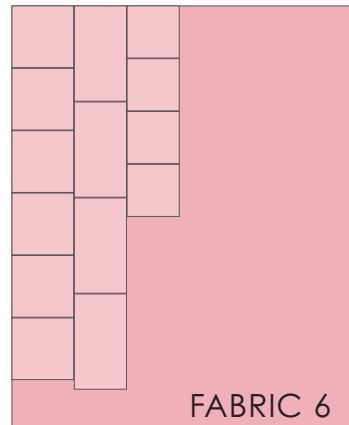
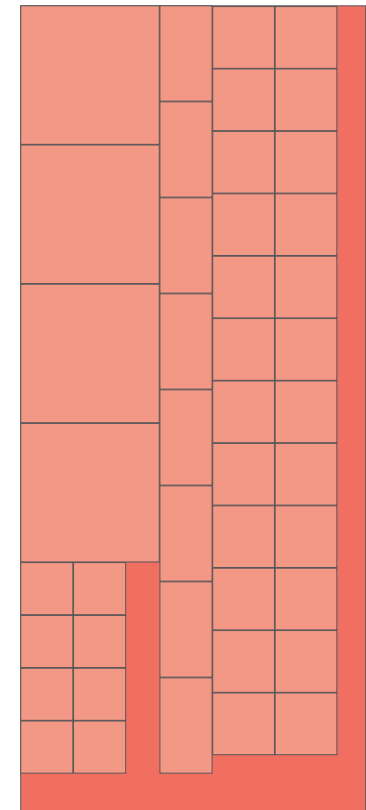
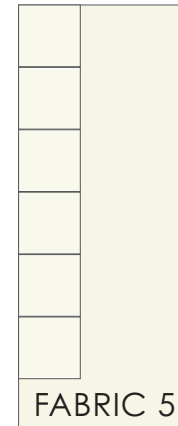
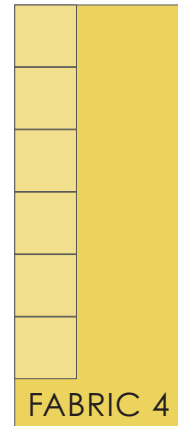
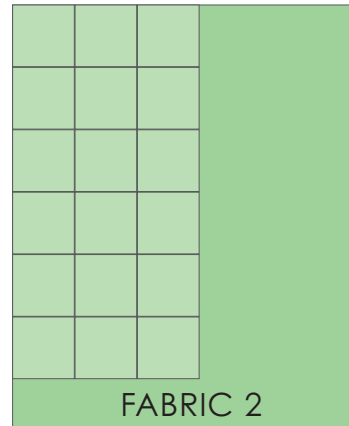
-Cut (1) 7 1/4" x WOF strip. Subcut
(4) 7 1/4" squares. From remaining
strip, subcut (8) 2 3/4" squares.

-Cut (1) 2 3/4" x WOF strip. Subcut
(8) 2 3/4" x 5" rectangles.

-Cut (2) 3/4" x WOF strips. Subcut
(24) 3/4" squares.

FABRIC 8 - 1 F8

-Cut (12) 3/4" squares.



*We've noted a few cuts of fabric where you MUST save your scraps for later blocks. But we recommend saving all of your leftovers just in case!

MY FAVORITE COLOR IS *moda*

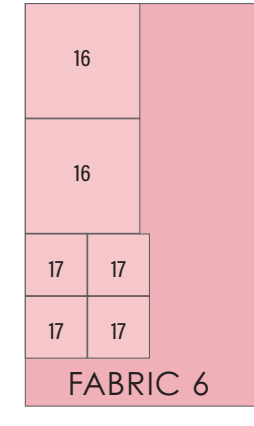
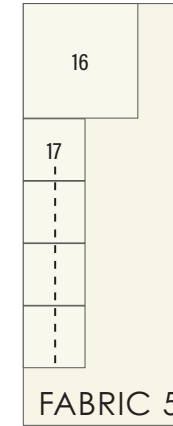
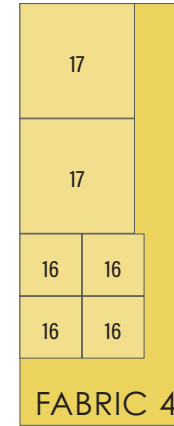
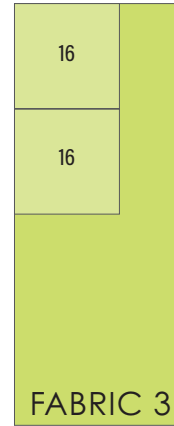
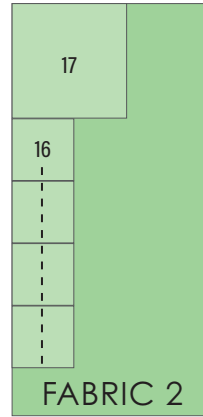
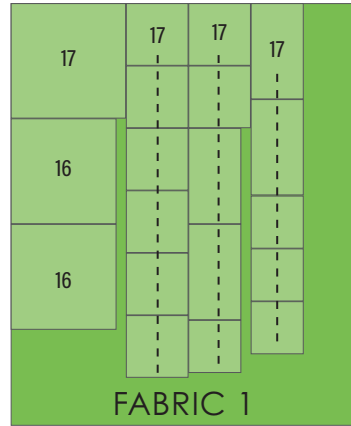
ALTERNATE BLOCK-BY-BLOCK CUTTING DIAGRAMS

Primrose Garden Bella Solids

BLOCKS 16 & 17

FABRIC 1 - 1 FQ

- Cut (1) 6" x 22" strip. Subcut (1) 6" square for Block 17, and (2) 5½" squares for Block 16.
- Cut (2) 3¼" x 22" strips. Subcut (8) 3¼" squares, (2) 2¾" x 5" rectangles, and (1) 2¾" square for Block 17.
- Cut (1) 2¾" x 22" strip. Subcut (2) 2¾" x 5" rectangles, and (3) 2¾" squares for Block 17.



FABRIC 2 - BLOCK 3 SCRAP

- Cut (1) 6" square for Block 17.
- Cut (4) 3¼" squares for Block 16.

FABRIC 3 - 1 F8

- Cut (2) 5½" squares for Block 16.

FABRIC 4 - 1 F8

- Cut a 12" x 9" section. Subcut into (2) 6" squares for Block 17.
- From remaining fabric, cut (4) 3¼" squares for Block 16.

FABRIC 5 - 1 F8

- Cut (1) 6" square for Block 16.
- Cut (4) 3¼" squares for Block 17.

FABRIC 6 - BLOCKS 12-14 SCRAP

- Cut a 12" x 12" section. Subcut into (2) 6" squares for Block 16.
- From remaining fabric, cut (4) 3¼" squares for Block 17.

FABRIC 7 - BLOCK 10 SCRAP

- Cut (1) 5" square for Block 16.

FABRIC 8 - 1 FQ

- Cut (1) 6" x 22" strip. Subcut (1) 6" square for Block 16, (1) 5" square for Block 17, and (2) 3¼" squares for Block 16.

- Cut (1) 3¼" x 22" strip. Subcut (6) 3¼" squares for Block 16.

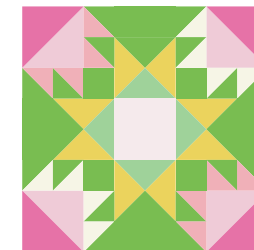
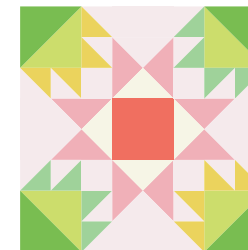
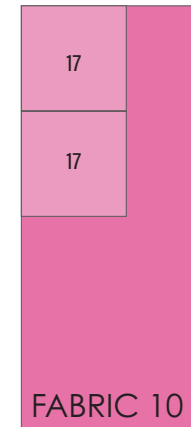
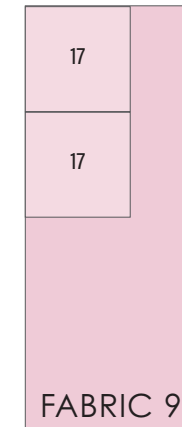
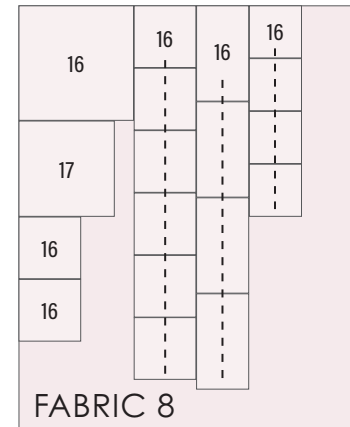
- Cut (2) 2¾" x 22" strips. Subcut (4) 2¾" x 5" rectangles and (4) 2¾" squares for Block 16.

FABRIC 9 - 1 F8

- Cut (2) 5½" squares for Block 17.

FABRIC 10 - 1 F8

- Cut (2) 5½" squares for Block 17.



*We've noted a few cuts of fabric where you MUST save your scraps for later blocks. But we recommend saving all of your leftovers just in case!

MY FAVORITE COLOR IS *moda*

ALTERNATE BLOCK-BY-BLOCK CUTTING DIAGRAMS

Primrose Garden Bella Solids

BLOCKS 18 & 19

FABRIC 1 - 1 F8

-Cut (2) 7¼" squares and (4) 3½" squares for Block 18.

FABRIC 2 - 1 FQ

-Cut (6) 5" squares for Block 19.

FABRIC 4 - 1 F8

-Cut a 13" x 9" section. Subcut into (12) 2½" squares for Block 19.
-Save your remaining yardage for Block 20.

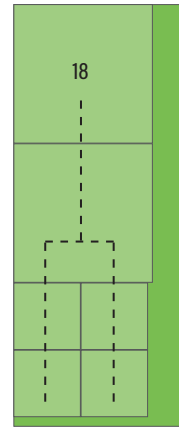
FABRIC 8 - 1 FQ

-Cut (1) 7¼" x 18" row. Subcut (2) 7¼" squares for Block 18.

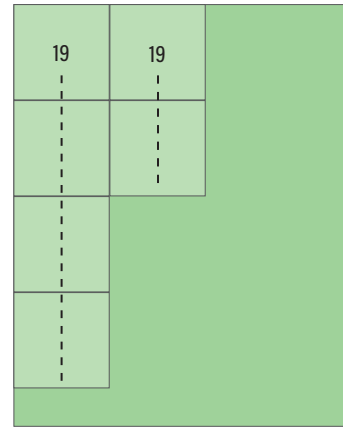
-Cut (2) 5" x 18" rows. Subcut (6) 5" squares for Block 19.

FABRIC 9 - 1 FQ

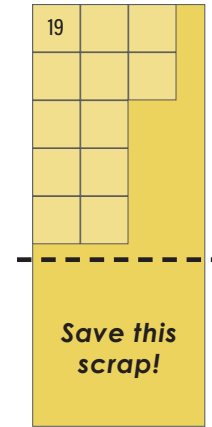
-Cut (4) 3½" squares for Block 18.
-Cut (12) 2½" squares for Block 19.



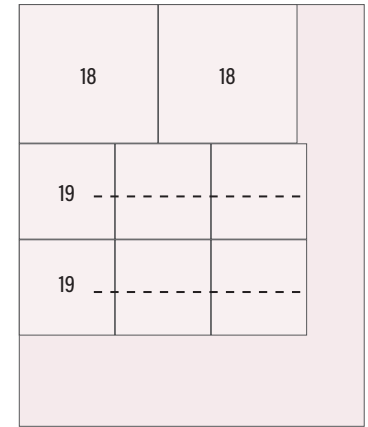
FABRIC 1



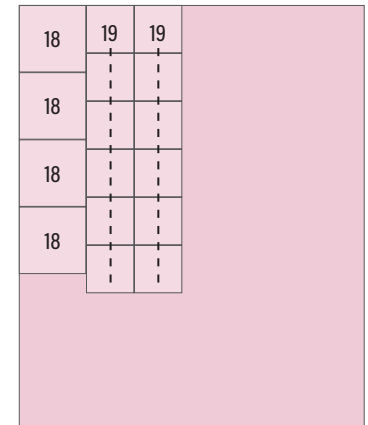
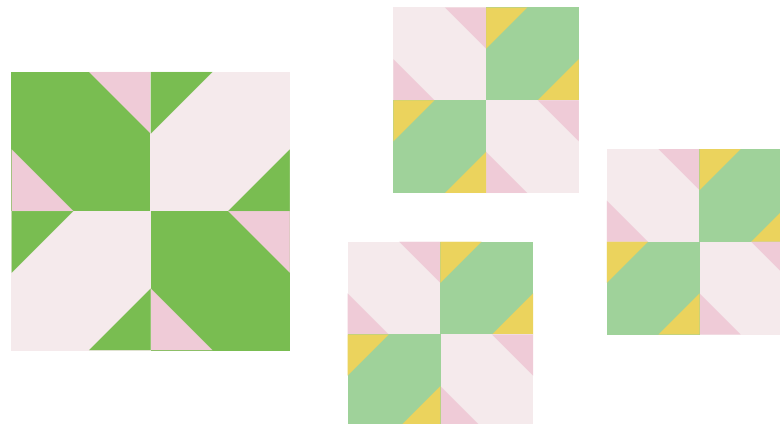
FABRIC 2



FABRIC 4



FABRIC 8



FABRIC 9

*We've noted a few cuts of fabric where you MUST save your scraps for later blocks. But we recommend saving all of your leftovers just in case!

MY FAVORITE COLOR IS *moda*

ALTERNATE BLOCK-BY-BLOCK CUTTING DIAGRAMS

Primrose Garden Bella Solids

BLOCK 20

FABRIC 1 - 1 FQ

-Cut (4) 3½" x 12½" rectangles.

FABRIC 2 - ½ YD

-Cut (2) 7" squares.

-Cut (16) 4" squares.

-Cut (4) 3½" squares.

FABRIC 4 - BLOCK 19 SCRAP

-Cut (1) 3½" square.

FABRIC 5 - 1 F8

-Cut (2) 7" squares.

FABRIC 6 - 1 FQ

-Cut (8) 4" squares.

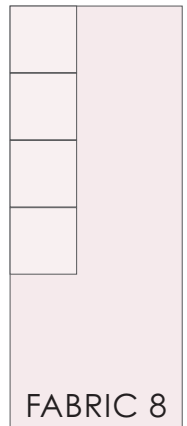
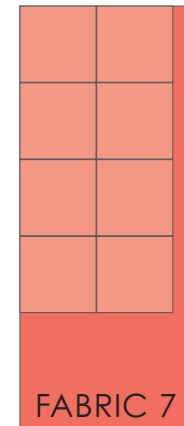
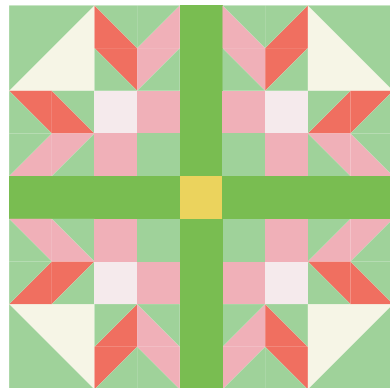
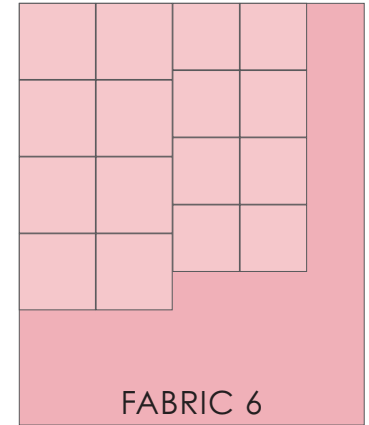
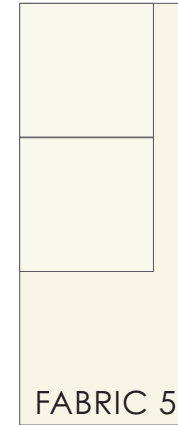
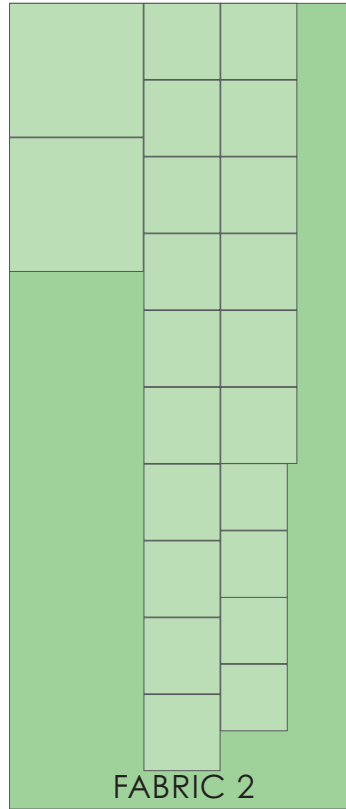
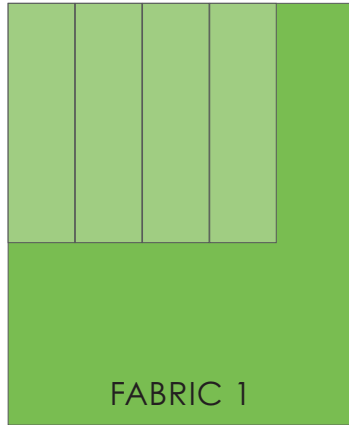
-Cut (8) 3½" squares.

FABRIC 7 - 1 F8

-Cut (8) 4" squares.

FABRIC 8 - 1 F8

-Cut (4) 3½" squares.



**We've noted a few cuts of fabric where you MUST save your scraps for later blocks. But we recommend saving all of your leftovers just in case!*