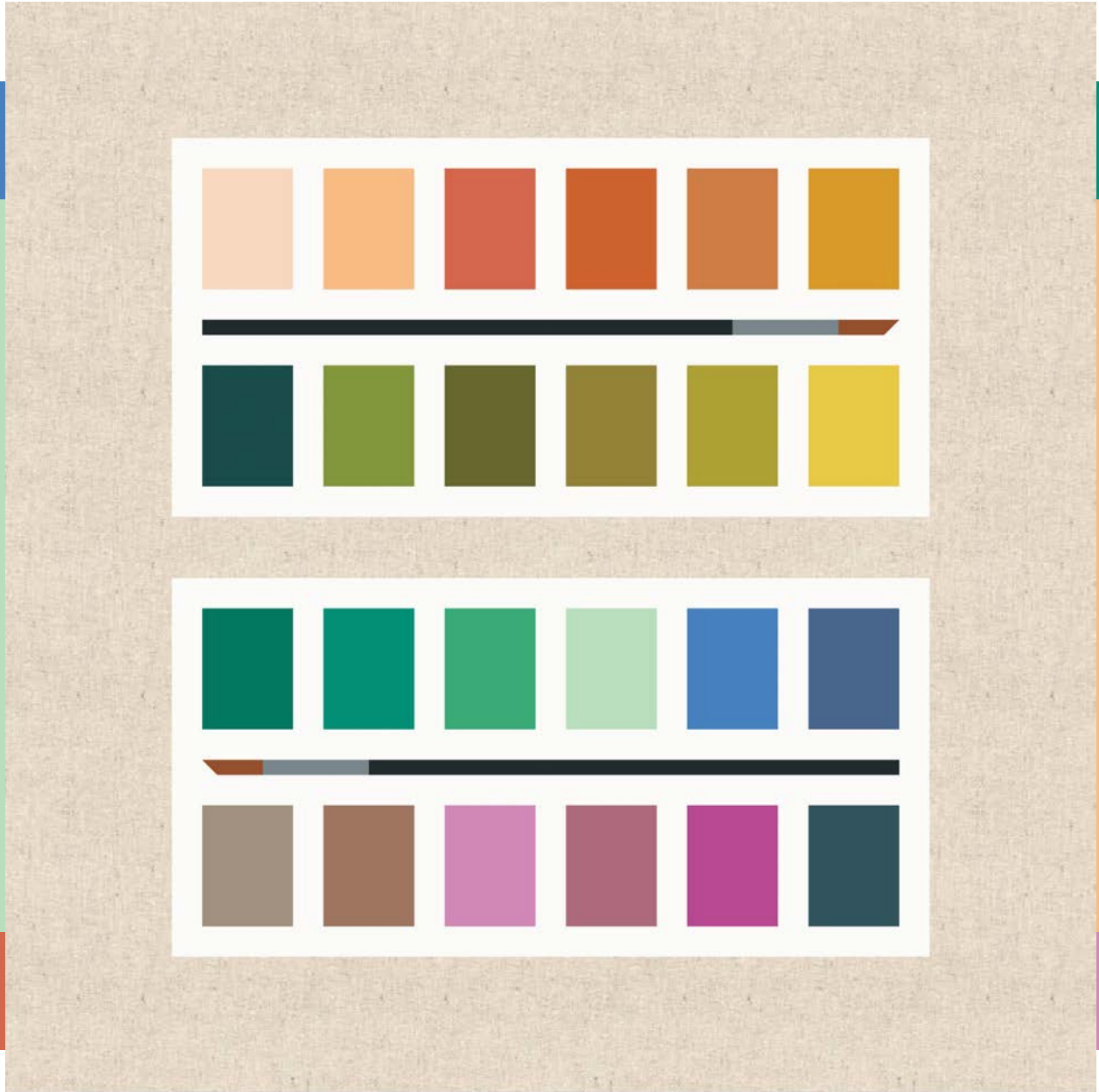


PS9900E

# PAINT TRAYS PILLOW

FINISHED SIZE 18" x 18"



Featuring ELIZABETH'S FAVORITES BELLA SOLIDS by MODA



© 2025 moda fabrics • all rights reserved

This pattern design, text, and images are all © 2025 by Elizabeth Hartman. All rights reserved.

Piece some cute patchwork paint trays and brushes with Bella Solids – the perfect medium for painting with fabric! This 18" x 18" quilted pillow cover features a Mini Charm Pack of Elizabeth's Favorite's Bella Solids.

This is a patchwork quilting pattern. All of the pieces are rotary-cut squares and rectangles machine-sewn together using  $\frac{1}{4}$ " seam allowance. Unless otherwise noted, all seams are pressed open.

## CUTTING INSTRUCTIONS

WOF = Width of Fabric (approx. 42")

### For the paint trays:

#### FROM THE MINI CHARM PACK:

Select (24) squares from the mini charm pack and trim them down to 2" x 2½" (Diagram label A).

- Colors used in sample are:  
479 Apricot, 480 Peachfizz,  
481 Nectarine, 231 Longhorn,  
454 Pumpkin, 483 Goldrush, 484 Zest,  
485 Split Pea, 486 Kelp, 487 Cypress,  
192 Leaf, 473 Verdant, 472 Meridian,  
108 Jade, 471 Jadeite, 470 Cool Mint, 475  
Blue Jay, 474 Denim, 400 Galactic, 301  
Petunia, 452 English Rose,  
476 Plum Blossom, 477 Fawn, and  
478 Cobblestone

From the 9900 482 Bella Sepia square in charm pack, subcut into  
- (2) 1" x 1½" rectangles (Diagram label I)

### For the pillow front:

#### FROM 32911 11 MOCHI LINEN NATURAL, cut:

- (1) 3¼" x WOF strip, subcut into
  - (2) 3¼" x 14" rectangles (Diagram label K)
- (1) 2¾" x WOF strip, subcut into
  - (2) 2¾" x 18½" rectangles (Diagram label L)
- (1) 1½" x WOF strip, subcut into
  - (1) 1½" x 13" rectangle (Diagram label J)

#### FROM 9900 200 BELLA OFF-WHITE, cut:

- (5) 1" x WOF strips, subcut into
  - (4) 1" x 13" rectangles (Diagram label E)
  - (4) 1" x 12" rectangles (Diagram label C)
  - (4) 1" x 5¾" rectangles (Diagram label D)
  - (20) 1" x 2½" rectangles (Diagram label B)
  - (2) 1" x 1" squares (Diagram label F)

#### FROM 9900 467 BELLA RAVEN, cut:

For pillow front:

- (1) 1" x WOF strip, subcut into
  - (2) 1" x 9¼" rectangles (Diagram label G)

For binding:

- (1) 2½" x WOF strip, subcut into
  - (2) 2½" x 19" strips

#### From 9900 401 BELLA METAL, cut:

- (2) 1" x 2¼" rectangles (Diagram label H)

### For the pillow back and lining:

#### FROM 9900 231 MODA LONGHORN, cut:

- (1) 18½" x WOF strip, subcut into
  - (2) 12½" x 18½" rectangles for pillow flaps

#### FROM MUSLIN or SCRAP FABRIC:

- (1) 22" x WOF strip, subcut into
  - (1) 22" x 22" square for pillow top lining
- (1) 16" x WOF strip, subcut into
  - (2) 16" x 22" rectangles for pillow flap linings

**CUTTING CHART**

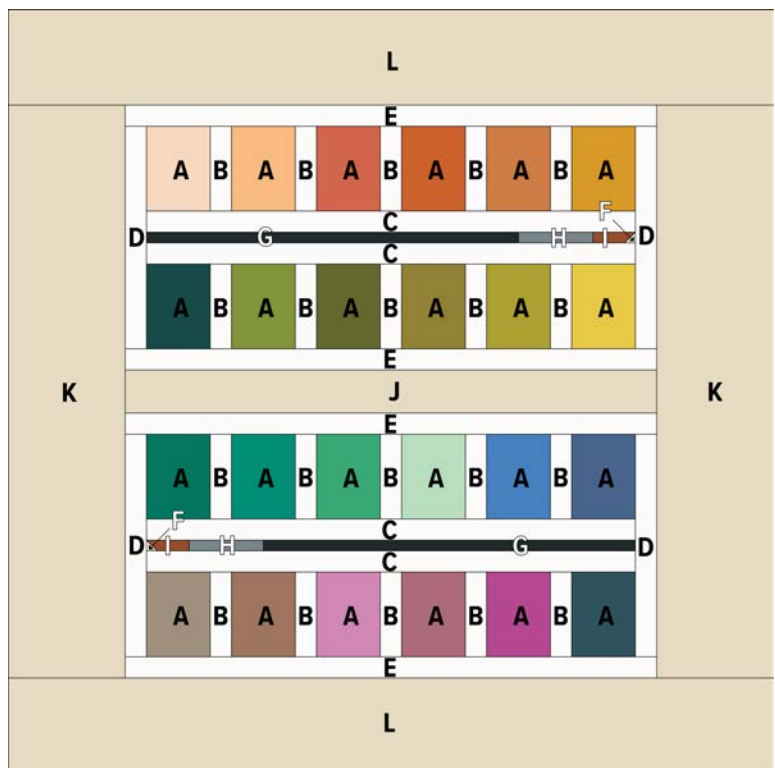
FABRIC	PIECE	QUANTITY	SIZE
PAINTS 24 different squares from Mini Charm Pack (all colors except 482 Sepia)	A	24	2" x 2½" each
PAINT TRAYS Bella 200 Off White	B	20	1" x 2½"
	C	4	1" x 12"
	D	4	1" x 5¾"
	E	4	1" x 13"
	F*	2	1" x 1"
BRUSH HANDLE Bella 467 Raven	G*	2	1" x 9¼"
BRUSH FERRULE Bella 401 Metal	H*	2	1" x 2¼"
BRUSH BRISTLES 1 square Bella 482 Sepia from Mini Charm Pack	I*	2	1" x 1½"
BACKGROUND Mochi Linen 32911 11 Natural	J	1	1½" x 13"
	K	2	3¼" x 14"
	L	2	2¾" x 18½"

*\*The pieces marked with an asterisk will be trimmed after sewing. Please refer to the piecing directions for details.*

**DIAGRAM FOR PILLOW TOP**

The Pillow Top (the front of the pillow) measures 18" x 18" (18½" x 18½" with seam allowance).

The chart at right lists all of the pieces needed to make the Pillow Top. The diagram shows where each piece will go.



## PIECING INSTRUCTIONS

Unless otherwise noted, all pieces are sewn with 1/4" seams and pressed open.  
For Step 3, you will need the fabric marking tool of your choice to mark the diagonal seam.

### PIECE THE PAINT TRAYS

1. Arrange pieces A and B in 4 rows, each including 6 pieces A and 5 pieces B, as shown in <<Fig. 1>>.

Sew together the pieces A and B in each row to make Tray Units 1, 2, 3, and 4, each 2½" tall x 12" wide.



**Fig. 1**

The piece A colors I used in each row are:

**Unit 1:** 479 Apricot, 480 Peachfizz, 481 Nectarine, 231 Longhorn, 454 Pumpkin, and 483 Goldrush

**Unit 2:** 473 Verdant, 192 Leaf, 487 Cypress, 486 Kelp, 485 Split Pea, and 484 Zest

**Unit 3:** 472 Meridian, 108 Jade, 471 Jadeite, 470 Cool Mint, 475 Blue Jay, and 474 Denim

**Unit 4:** 478 Cobblestone, 477 Fawn, 476 Plum Blossom, 452 English Rose, 301 Petunia, and 400 Galactic

2. Sew together pieces G, H, and I, as shown in <<Fig. 2>>, to make a 1" tall x 12" wide GHI unit.

Repeat to make a second, identical, GHI unit.



**Fig. 2**

3. Place piece F on top of the GHI unit, as shown in <<Fig. 3>>, aligning the outer corners of piece F with the corners of piece I. Mark a diagonal line from the lower-left to the upper-right corner of piece F.

Sew along the marked line (right on top of the marked line) to make a diagonal seam. Trim away excess fabric, leaving 1/4" seam allowance, and press the seam open to make the GHIF unit.

Repeat to make a second, identical, GHIF unit.



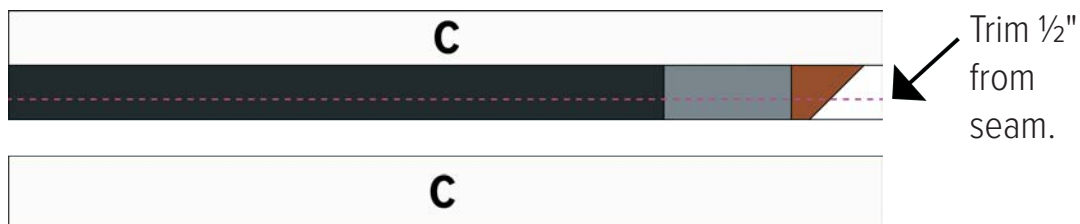
**Fig. 3**

## PIECING INSTRUCTIONS continued

4. Sew piece C to the top of the GHIF unit, as shown in <<Fig. 4>>. Measure from the seam to trim the GHIF unit (the paintbrush) to 1/2" tall.

**Note: The paintbrush will finish at just 1/4" tall. Using this method of making the pieced unit too tall, and then trimming it to size after sewing the first seam will make it easier to piece this part accurately.**

Sew another piece C to the bottom of the CGHIF unit, pressing this seam only to the side, toward the CGHIF unit, to make the 2" tall x 12" wide Brush Unit. Repeat to make a second, identical, Paintbrush Unit.

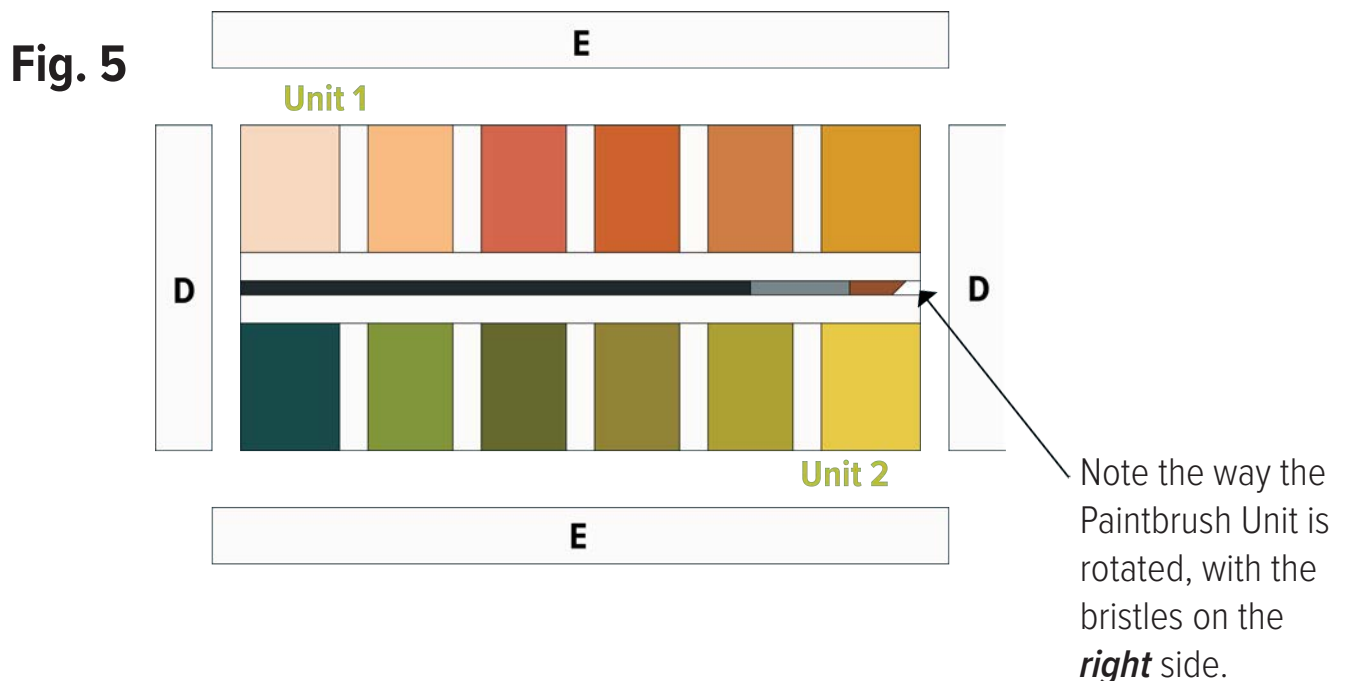


**Fig. 4**

5. Sew Tray Unit 1 to the top and Tray Unit 2 to the bottom of one of the Brush Units, as shown in <<Fig. 5>>, noting the orientation of all units.

The Paint Tray Units should look like the ones in Fig 1, and the Brush Unit should be rotated so that the bristles are on the **right** side.

Sew pieces D to the left and right sides. Sew pieces E to the top and bottom to make the 6-3/4" tall x 13" wide Top Unit.





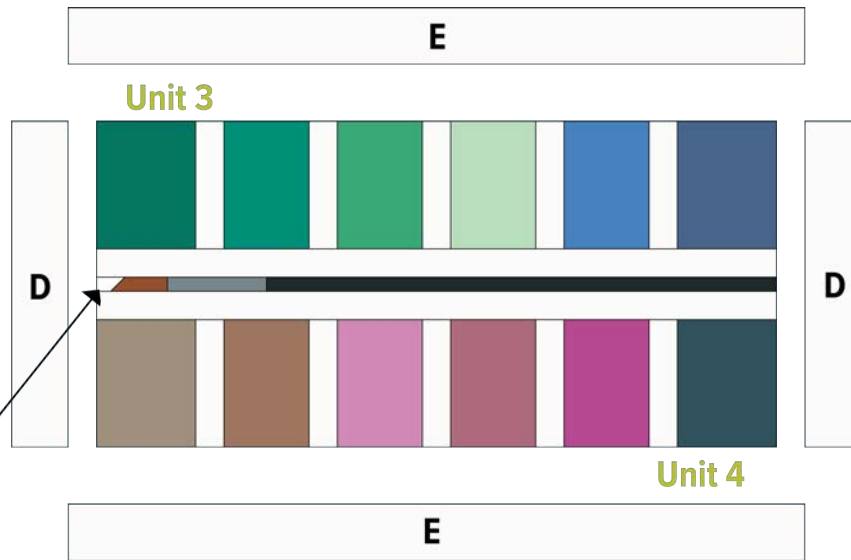
**PIECING INSTRUCTIONS** *continued*

6. Sew Tray Unit 3 to the top and Tray Unit 4 to the bottom of the remaining Brush Unit, as shown in <<Fig. 6>>, noting the orientation of all units.

The Paint Tray Units should look like the ones in Fig 1, and the Brush Unit should be rotated so that the bristles are on the **left** side.

Sew pieces D to the left and right sides. Sew pieces E to the top and bottom to make the 6-3/4" tall x 13" wide Bottom Unit.

**Fig. 6**



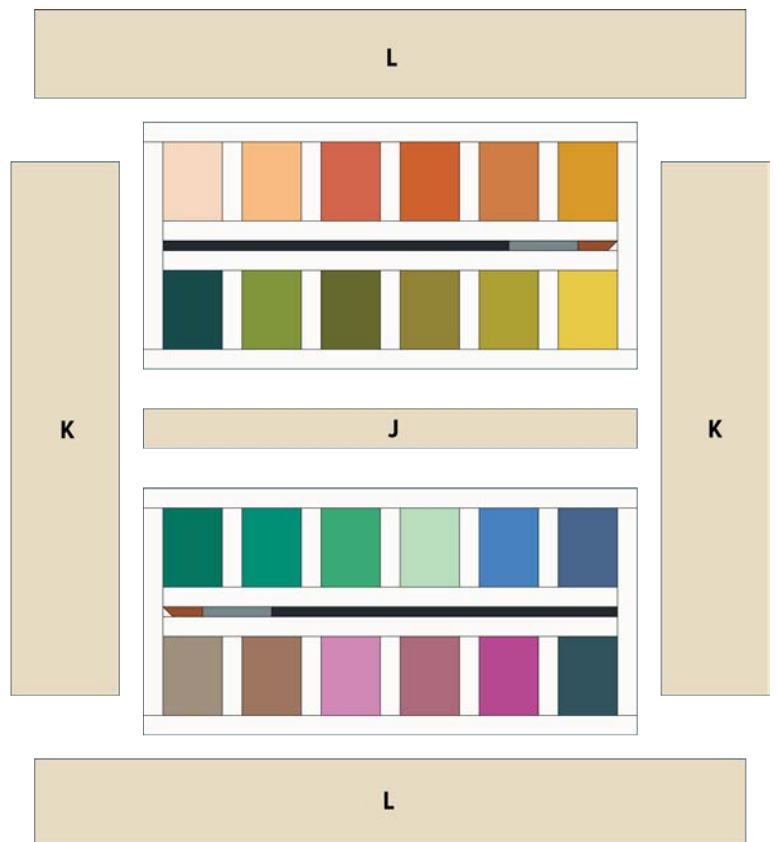
Note the way the Paintbrush Unit is rotated, with the bristles on the **left** side.

**ASSEMBLE THE PILLOW TOP**

7. Sew the Top Unit to the top and the Bottom Unit to the bottom of Piece J, as shown in <<Fig. 7>>.

Sew pieces K to the left and right sides.

Sew pieces L to the top and bottom to finish the 18-1/2" x 18-1/2" Pillow Front.



**Fig. 7**

## FINISHING INSTRUCTIONS

### FINISHING THE PILLOW

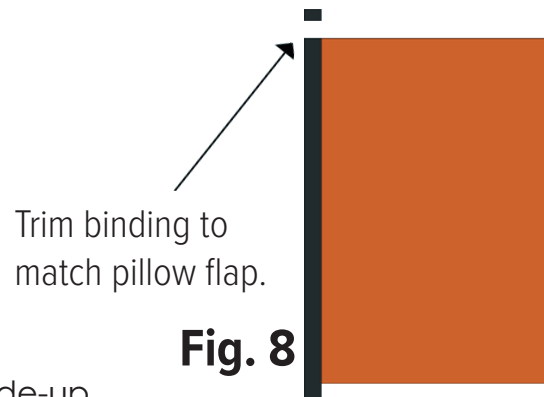
8. Make a quilt sandwich using the Pillow Top, the 20" x 20" piece of batting, and the Pillow Top Lining. Make 2 smaller quilt sandwiches using the Pillow Flap pieces, the 14" x 20" pieces of batting, and the Pillow Flap Lining pieces.

Quilt the sandwiches as desired and trim away excess batting and lining fabric to match the Pillow Top and Pillow Flaps.

The Pillow Top should be about 18-1/2" x 18-1/2" and the Pillow Flaps should be about 14" x 18-1/2" each. *Don't worry if quilting has made them a little smaller. That's normal, and things should still work just fine!*

9. Use the Binding Strips to finish one long edge of each of the Pillow Flaps.

Trim the binding to match the flaps, as shown in <<Fig. 8>>.



**Fig. 8**

10. Place the Pillow Top on your work surface, right-side-up.

Refer to <<Fig. 9>> and <<Fig. 10>> to place the Pillow Flaps on top of the Pillow Top. Right sides should be together and the finished/bound edges of the Pillow Flaps will overlap one another.

(Note that the flap closest to the Pillow Top - the one shown in Fig. 9 - will be on the outside in the finished pillow.) The raw edges of the Pillow Flaps should match the raw edges of the Pillow Top.

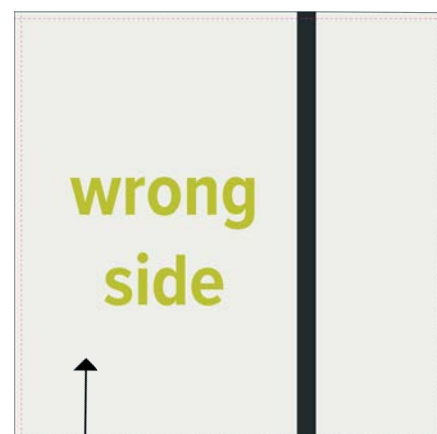
Pin or clip the panels in place and sew around all four sides, using a 1/4" seam allowance, as shown in Fig. 10. If desired, serge or finish the raw edges with a zigzag stitch.

**Fig. 9**



Place one Pillow Flap on top of Pillow Top, with right sides together

**Fig. 10**



Place the second Pillow Flap on top of the Pillow Top, overlapping the first Pillow Flap.

11. Turn the pillow right-side-out, using a point turner or other blunt tool to push out the corners. Fit the pillow cover over an 18" x 18" pillow form.



# moda PAINT TRAYS PILLOW

FINISHED SIZE 18" x 18"

Featuring ELIZABETH'S FAVORITES BELLA SOLIDS by MODA

© 2025 moda fabrics • all rights reserved  
This pattern design, text, and images are all  
© 2025 by Elizabeth Hartman. All rights reserved.

## FABRIC REQUIREMENTS

(1) ELIZABETH'S FAVORITES BELLA SOLIDS  
MINI CHARM PACK



9900MCE  
For paint trays  
and brush bristles

1/8 YARD



9900 467  
For brush handles  
and binding

F16



9900 401  
For brush ferrules

1/4 YARD



9900 200  
For paint trays

1/4 YARD



32911 11  
For background

5/8 YARD



9900 231  
For pillow backing

.....*Designer Note*.....

For the pillow, you will also need 1-1/2 yards muslin or scrap fabric for lining, and an 18" x 18" pillow insert. (Pillow front and back flaps are all quilted. The pillow lining will be used to make the backs for the pillow front and pillow flap quilt sandwiches, and will end up being visible only on the inside of the quilted pillow cover.)

.....

