

PS12224

Foldie Holdie Bag

This cute little bag is so quick to make, it's hard to stop at just one! Very handy size for carrying a little stitchery or maybe some crochet. Also perfect for snacks on the go.

Requirements

- ½ yd (50cm) of Moda Toweling (992 355)
- 3 fat ¼'s (12224 11, 12224 17, 12224 24)
- ½ yd (50cm) lightweight fusible batting
- ½ yd lightweight fusible interfacing



Fabrics pictured are Summer Solstice Wovens by Jenelle Kent of Pieces to Treasure for Moda Fabrics.

All finished items are protected by copyright and may not be reproduced for any commercial use whatsoever, without prior written permission from Pieces to Treasure. All rights reserved. No part of this publication may be reproduced in any form without prior written consent.

© 2025 Pieces to Treasure

**Pieces^{TO}
Treasure**

BY JENELLE KENT

Pieces to Treasure
701 The Scenic Rd
MacMasters Beach NSW 2251
Australia
www.piecestotreasure.com
email: admin@piecestotreasure.com
IG: piecestotreasure

PS12224

Foldie Holdie

Bag Pattern

**Pieces^{TO}
Treasure**

BY JENELLE KENT



Finished Size: 9”h x 8”w x 3”d (23cm x 20cm x 8cm)

A Moda
Toweling
Pattern

Foldie Holdie Bag

This cute little bag is the perfect size to carry a little stitchery to an appointment or maybe even a few snacks when you're on-the-go. What will you keep in your Foldie Holdie Bag?

Use a walking or dual feed foot when sewing with Moda toweling.

1/4" seams used throughout

WOF = width of fabric or selvage to selvage

Finished size 9"h x 8"w x 3"d

Cutting

- Unpick the hems on the toweling and then cut:
- 10" x 14" (x 2)

Starching woven fabric prior to cutting is recommended.

- Sew 2 fat 1/8's together along the long side and then cut:

- 10" x 14" (x2)

- From remaining fat 1/8 cut:

- 3" x 20" (x2)

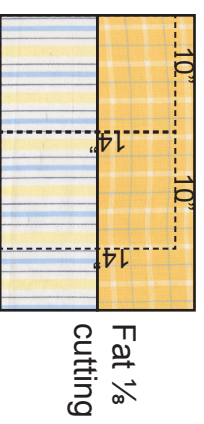
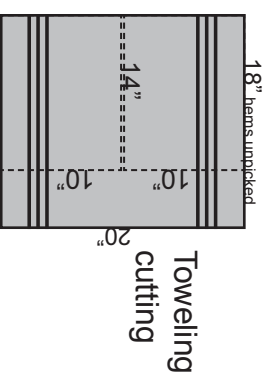
- From fusible lightweight batting cut:

- 10" x 14" (x2)

- 2" x 20" (x2)

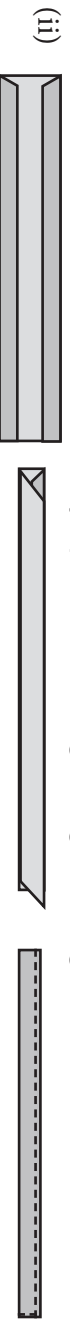
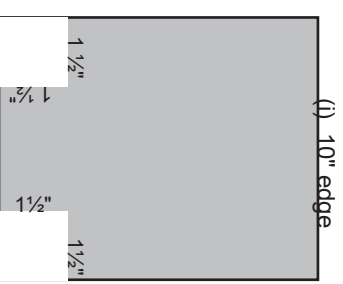
- From fusible lightweight interfacing cut:

- 10" x 14" (x2)

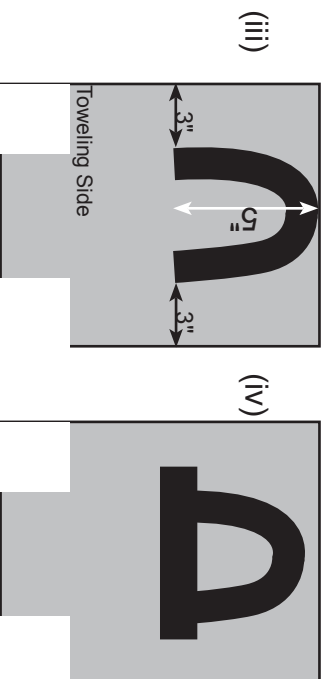


Bag Assembly

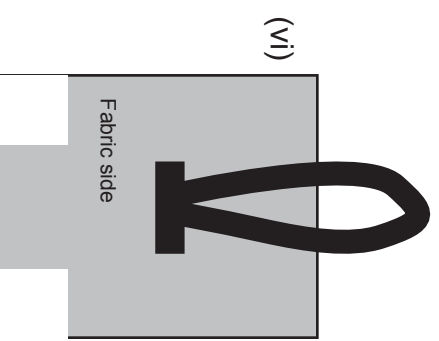
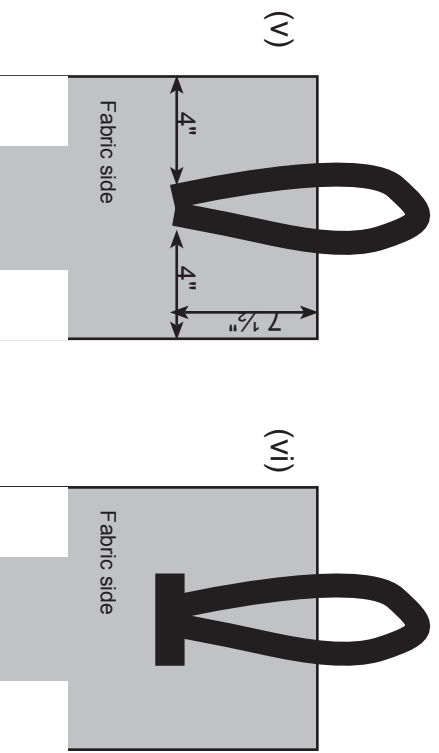
1. Fuse batting onto the wrong side of one 10" x 14" toweling and one 10" x 14" fabric. Quilt as desired. These are the outside pieces of the bag.
2. Fuse interfacing onto the wrong side of the remaining 10" x 14" toweling and fabric. These are for the bag lining.
3. Cut a 1 1/2" square from the base corners of **all** the 10" x 14" rectangles (i).
4. Fuse batting onto the wrong side of the 3" x 20" strips cut for the handles. Position the batting so it is in the centre of the strip of fabric. A 1/2" of fabric will be showing down both sides of the batting.
5. Fold the long edges of the fabric over the batting and then fold in half, so long folded edges match. Stitch down the long open side, 1/8" from the edge (ii). Stitch down the folded edge and add two more lines of evenly spaced stitching along the length of the handles.



6. Cut one handle into one 9", one 6" and one 5" length. Keep the remaining handle 20" long.
7. Place the ends of the 9" handle on the right side of toweling 10" x 14" outside rectangle, so the ends are 5" from the top edge and 3" from each side (iii). Stitch ends in place.
8. Place 6" length of handle over the ends of the 9" handle. Tuck the raw ends under and stitch in place along all 4 sides, $\frac{1}{8}$ " from the edge (iv).

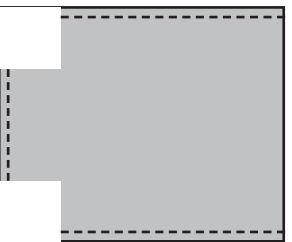


9. Fold the 20" length of handle so the raw ends meet and place them 7 $\frac{1}{2}$ " down from the top edge of the fabric 10 x 14" outside piece, 4" from each edge (v). Stitch in place.



10. Cover the raw ends of the 20" handle with the 5" length and tuck the raw ends under. Sew around all 4 edges of the 5" handle (vi).

11. Place the 2 bag outer pieces right sides together and sew down both sides and along the base (vii).



12. Flatten the bag base so the side and base seam are on top of one another and sew across the corner of the bag. Repeat for the other corner, starting and ending with a backstitch.
13. Repeat Steps 11 & 12 for the lining.
14. Place the bag inside the lining, right sides together, tucking the handles out of the way. Sew around the top edge of the bag, leaving a 4" opening for turning through.
15. Turn the bag, right sides out, through the 4" opening and press the top edge well, tucking the open edges under.
16. Sew around the top edge of the bag $\frac{1}{8}$ " from the edge, closing the opening as you sew.
17. Fold the top edge of the bag over, and thread the long handle through the short one, to close the bag and make it easy to carry.