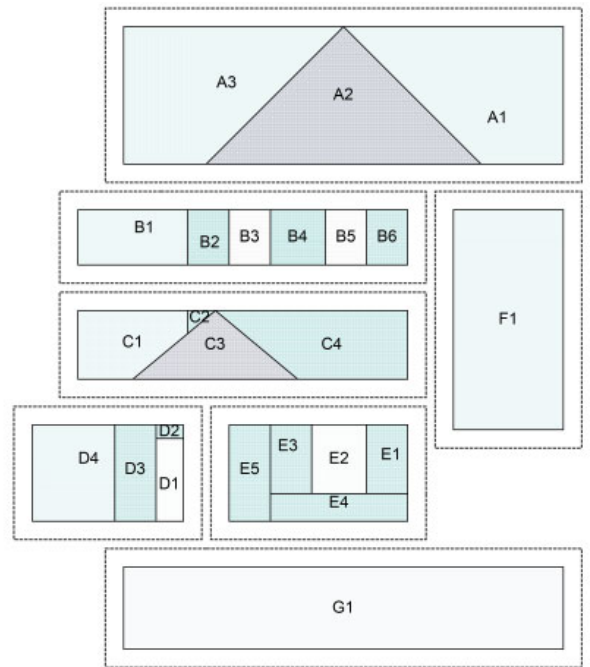
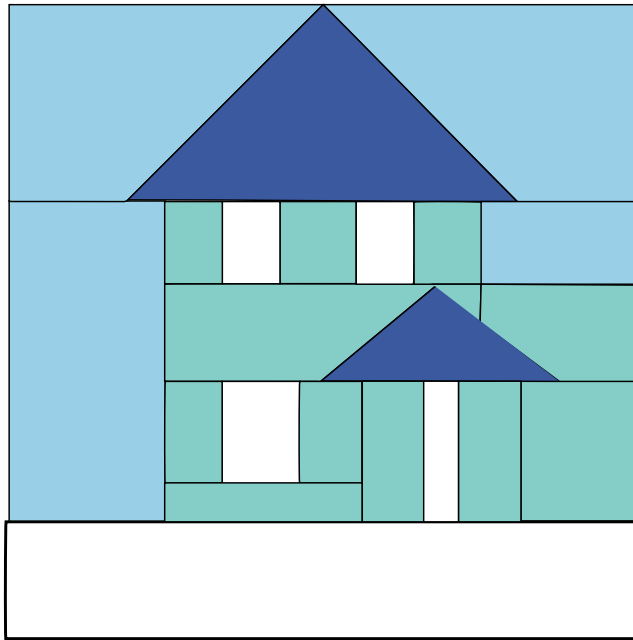




# MODA BAKE SHOP

- 1
- 2
- 3
- 4



## PAPER PIECED

## Winter Chalet

### WINTER FROST



COUNTDOWN TO CHRISTMAS  
2020

#### DESIGNED BY:

Carole Carter  
From My Carolina Home

Images for reference only. Print paper piecing pattern at the end of this document to make the block

## INGREDIENTS

This block is a great way to use scraps from the blocks you've made so far! Make sure they are generous enough to cover the piece on the template.

**YIELD** 6" or 12" finished block

# Countdown to Christmas: Winter Chalet

## STEP 1. ASSEMBLE PATTERN PIECES

For the 12-inch finished size, tape pieces for sections E and F together measuring 12-1/2-inches on the longest side. Sections A and C should measure 9-1/2-inches. If those are correct, the rest will be as well. For the 6-inch finished size, the top section should measure 6-1/2-inches to the cutting lines.



## STEP 2. PAPER PIECE

Piece each section.  
Assemble using the key below.

Place area D1 next to B5, then sew.  
Sew section C to Section A placing C2 next to A5.  
Sew B/D to A/C  
Add Section G to A1/B1 edge.  
Sew Section E roof base to Section A.  
Sew bottom Section F to bottom of block.  
Remove paper and press.

