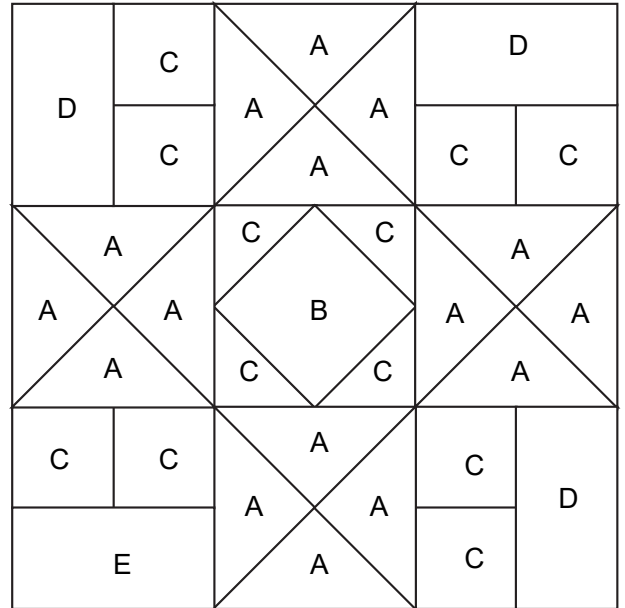
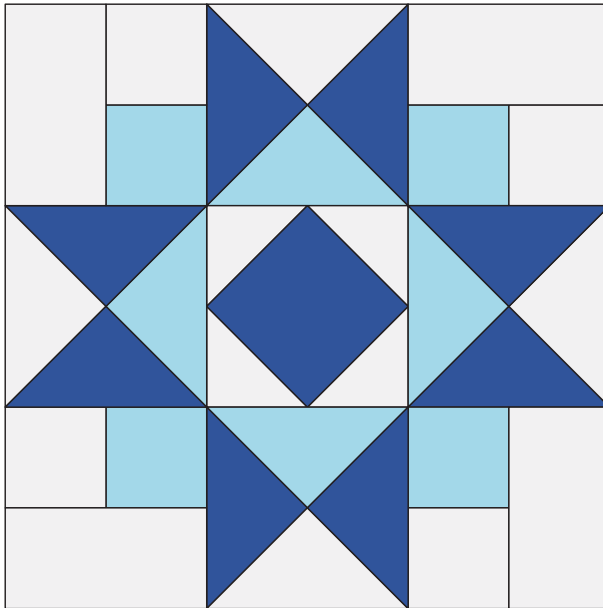




MODA BAKE SHOP

- 1
- 2
- 3



Icicle Star

WINTER FROST



COUNTDOWN TO CHRISTMAS
2020

DESIGNED BY:

Audrey Mann
The Cloth Parcel

INGREDIENTS

FROM FABRIC 1, CUT:

- {A} (2) 5¼" squares
- {B} (1) 4½" square

FROM FABRIC 2, CUT:

- {A} (1) 5¼" squares
- {C} (4) 2½" squares

FROM FABRIC 3, CUT:

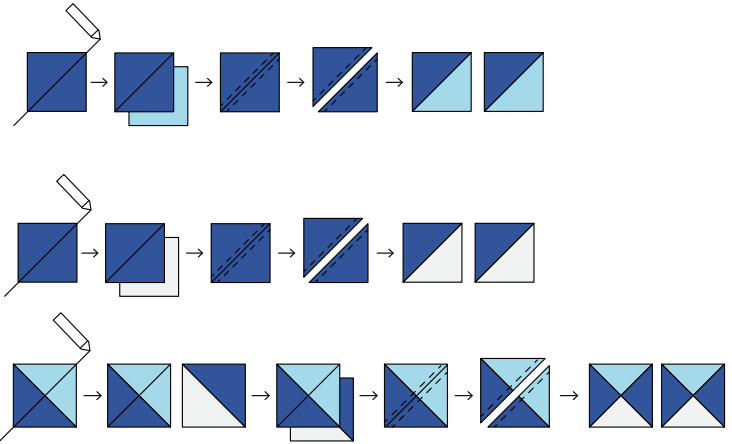
- {A} (1) 5¼" squares
- {C} (8) 2½" squares
- {D} (4) 2½" x 4½" rectangles

YIELD 12" finished block

Countdown to Christmas: Icicle Star

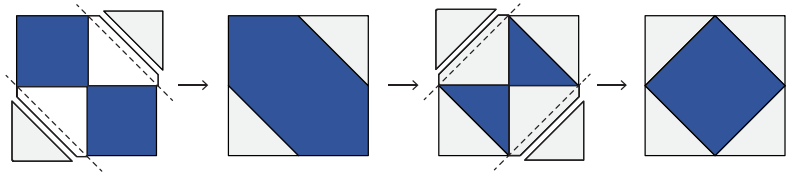
STEP 1. MAKE QUARTER SQUARE TRIANGLES

Using the 5¼" squares, make QSTs. Pair dark blue/light blue squares and dark blue/white squares. Mark a diagonal line on the back of the dark blue squares. Sew each pair of squares together, ¼" away from the diagonal line on both sides. Cut apart on the diagonal line, and press each HST open. Pair dark blue/light blue HSTs with dark blue/white HSTs and repeat the process to end up with 4 QSTs. Trim each to 4½" square, if necessary.



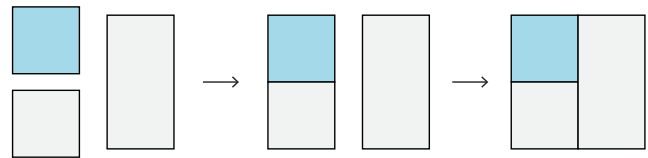
STEP 2. MAKE SQUARE IN SQUARE

Using the dark blue 4½" square and 4 white 2½" squares, make a Diamond in Square block. Draw diagonal lines on the back of the white squares. Sew white squares on opposite corners of the dark blue square along the diagonal line. Trim corners off ¼" from the seam. Press open, and repeat with remaining opposite corners.



STEP 3. MAKE CORNER UNITS

Using remaining pieces, sew 4 white 2½" squares to 4 light blue 2½" squares. Press, then sew white 2½" x 4½" piece to the squares.



STEP 4. ASSEMBLE BLOCK

Sew units together into three rows, press, then sew rows together. Press, and the block is complete!

