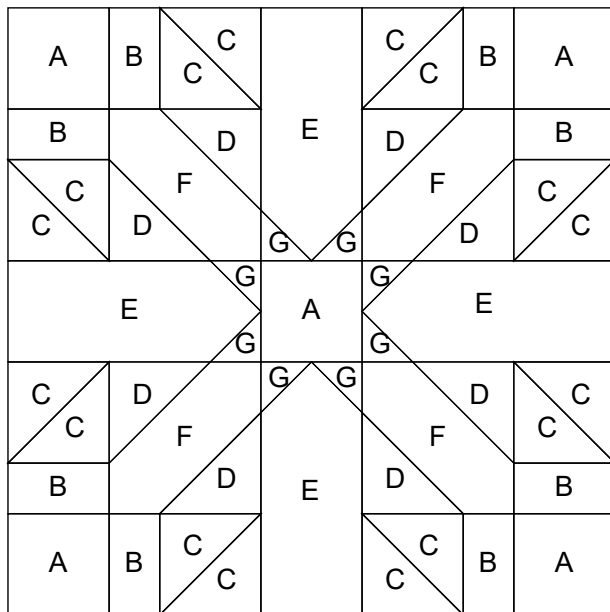
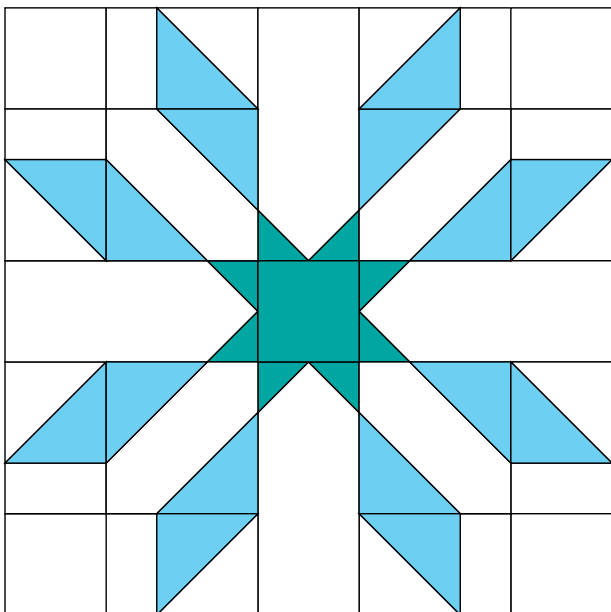




MODA BAKE SHOP

- 1
- 2
- 3



Starflake

WINTER FROST



COUNTDOWN TO CHRISTMAS
2020

DESIGNED BY:

Jen Daly
QUILTS

INGREDIENTS

FROM FABRIC 1, CUT:

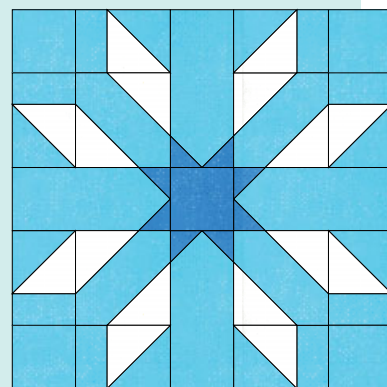
- (A) (4) 2 1/2" squares
- (B) (8) 1 1/2" x 2 1/2" rectangles
- (C) (4) 3" squares
- (E) (4) 2 1/2" x 5 1/2" rectangles
- (F) (4) 3 1/2" squares

FROM FABRIC 2, CUT:

- (C) (4) 3" squares
- (D) (8) 2 1/2" squares

FROM FABRIC 3, CUT:

- (A) (1) 2 1/2" square
- (G) (8) 1 1/2" squares



ALTERNATIVE COLORING

YIELD 12" finished block

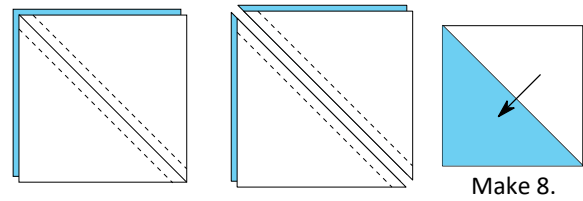
Countdown to Christmas: Starflake

STEP 1. MAKE HALF SQUARE TRIANGLES

On the wrong side of 4 white print 3" squares, use a pencil to lightly draw a diagonal line from corner to corner. Layer a marked square atop a turquoise print 3" square with right sides together. Stitch the pair together a scant $\frac{1}{4}$ " from either side of the drawn line

Cut the pair apart on the drawn line to make 2 half-square triangles. Press seam allowances toward the turquoise and trim HSTs to measure $2\frac{1}{2}$ " x $2\frac{1}{2}$ " (including seam allowances).

Repeat to make 8 HSTs.

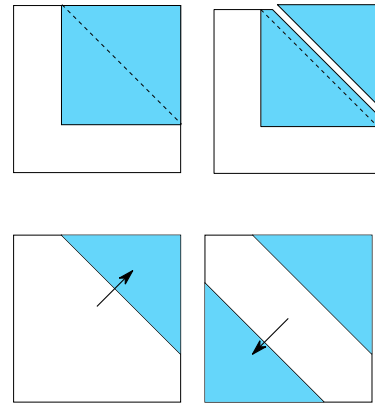


STEP 2. MAKE DOUBLE TRIANGLE UNITS

On the wrong side of 8 turquoise print $2\frac{1}{2}$ " squares, use a pencil to lightly draw a diagonal line from corner to corner. Layer a marked turquoise $2\frac{1}{2}$ " square atop one corner of a white print $3\frac{1}{2}$ " square with right sides together. Stitch the pair together on the drawn line.

Trim seam allowance to $\frac{1}{4}$ " and press toward the turquoise.

Repeat at the opposite corner of the white $3\frac{1}{2}$ " square, paying careful attention to the orientation of the stitching line. Repeat to make 4 double triangle units.



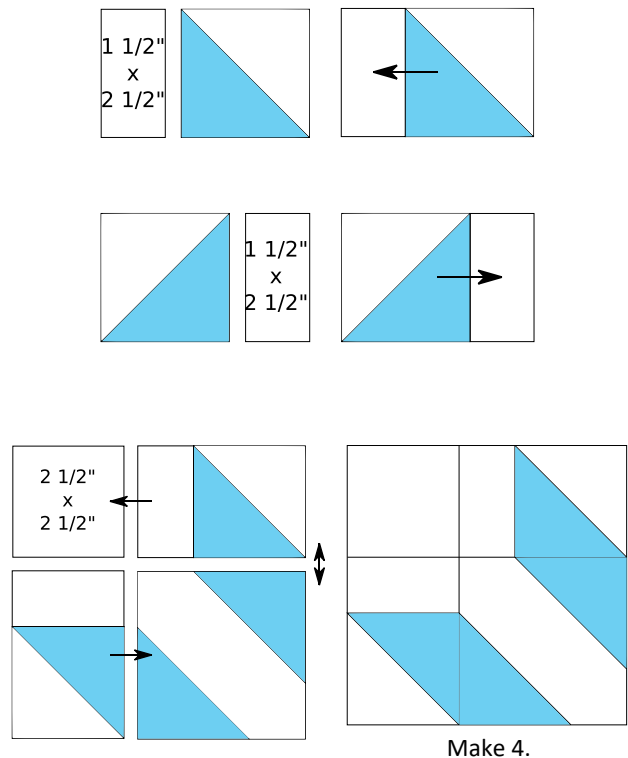
STEP 3. MAKE UNIT A

For one Unit A, gather 2 HST units, 1 double triangle unit, 2 white print $1\frac{1}{2}$ " x $2\frac{1}{2}$ " rectangles, and 1 white $2\frac{1}{2}$ " square.

Sew a white print $1\frac{1}{2}$ " x $2\frac{1}{2}$ " rectangle to the left side of an HST, paying careful attention to the orientation of the HST. Press seam allowance toward the white rectangle.

Sew a white print $1\frac{1}{2}$ " x $2\frac{1}{2}$ " rectangle to the right side of the remaining HST, paying careful attention to the orientation of the HST. Press seam allowance toward the white rectangle.

Lay out the units from step 2 and 3, the double triangle unit, and the white print $2\frac{1}{2}$ " square in 2 horizontal rows. Stitch together the pieces in each row, pressing the seam allowances as indicated by the arrows. Stitch together the rows. Press the seam allowances open to finish the Unit A. Repeat to make 4 Unit As.



Countdown to Christmas: Starflake

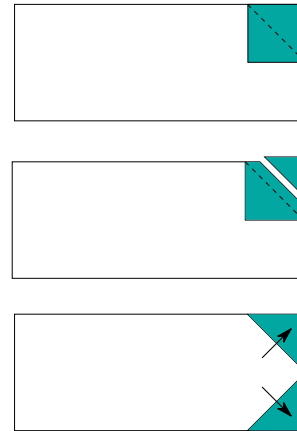
STEP 4. MAKE UNIT B

On the wrong side of 8 teal print $1\frac{1}{2}$ " squares, use a pencil to lightly draw a diagonal line from corner to corner. Layer a marked teal print $1\frac{1}{2}$ " square atop one corner of a white print $2\frac{1}{2}$ " x $5\frac{1}{2}$ " rectangle with right sides together as shown. Stitch the pair together on the drawn line.

Trim seam allowance to $\frac{1}{4}$ " and press toward the teal.

Repeat at adjacent corner (on short side) of the white print $2\frac{1}{2}$ " x $5\frac{1}{2}$ " rectangle, paying careful attention to the orientation of the stitching line.

Repeat to make 4 Unit Bs.

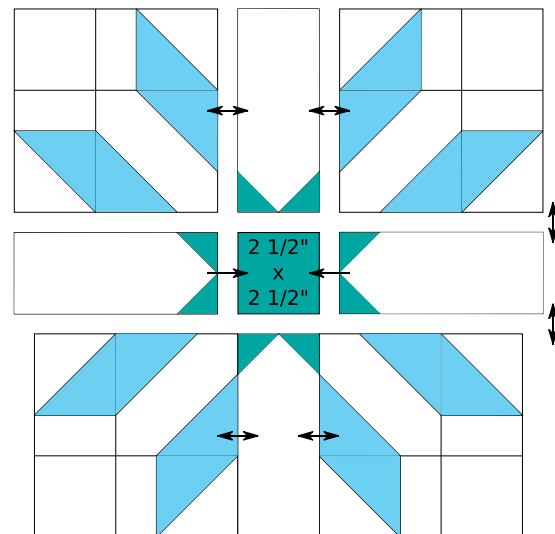


Make 4.

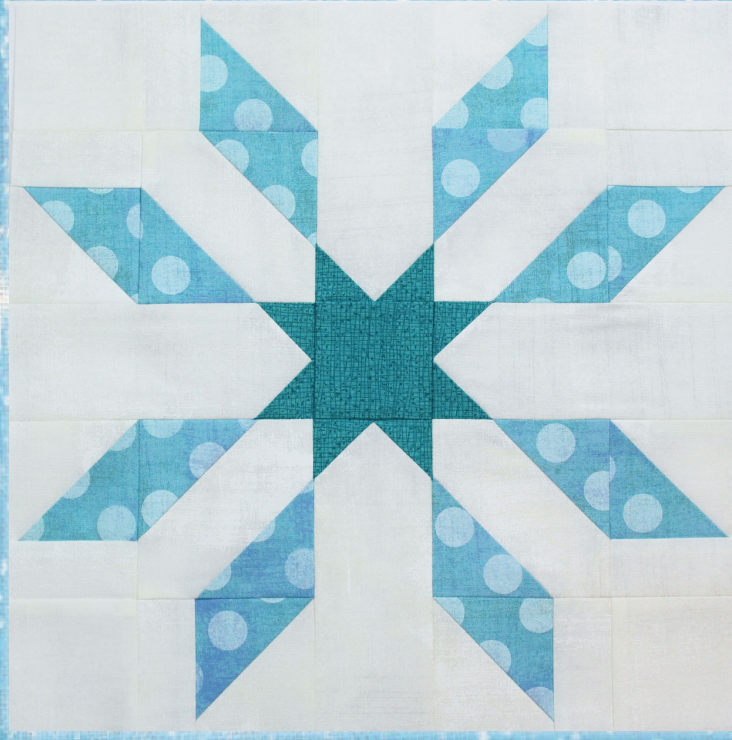
STEP 5. ASSEMBLE BLOCK

Lay out 4 Unit As, 4 Unit Bs, and teal print $2\frac{1}{2}$ " square in 3 horizontal rows as shown. Stitch together the pieces in each row, pressing the seam allowances as indicated by the arrows.

Stitch together the rows. Press the seam allowances open to finish the block.



STARFLAKE
BY JEN DALY



Countdown to Christmas: Winter Frost



STA
BY



